



**THE DATASHEET OF
M7581-05**



Customer Information

S

DRAWING No.: M7580/81/82/83-XX

SHEET 2 OF 2

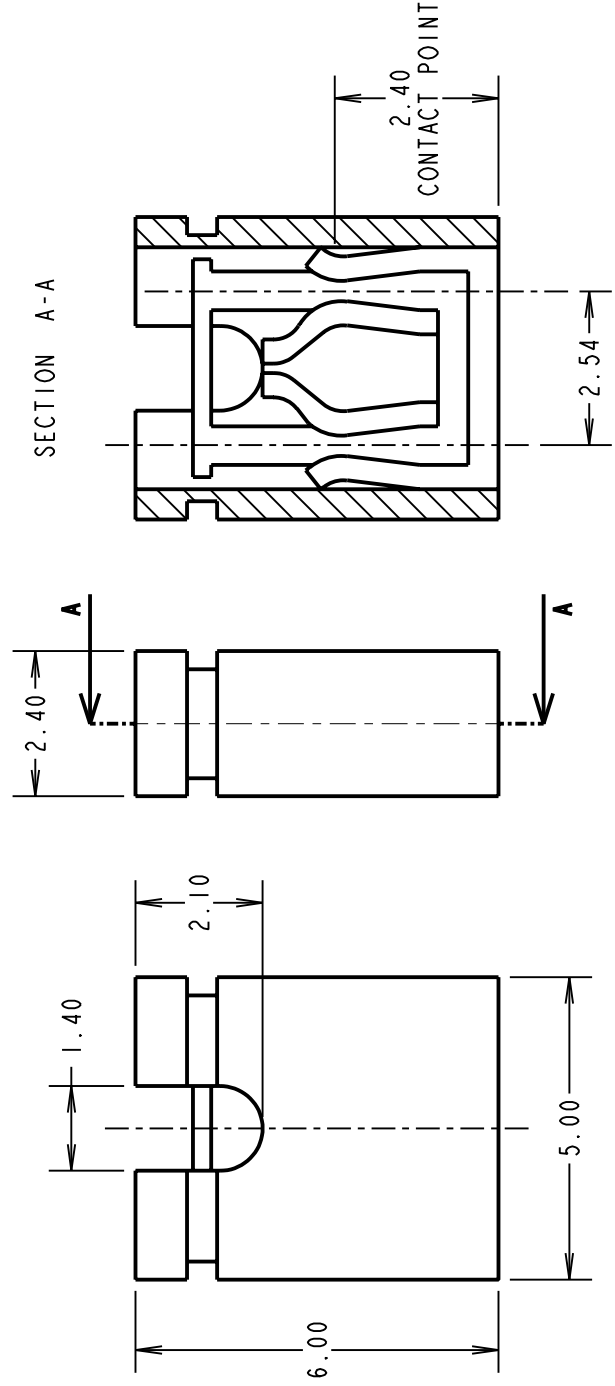
IF IN DOUBT - ASK

(C)

NOT TO SCALE

THIRD ANGLE PROJECTION

SPECIFICATION
MATERIAL
INSULATION



ORDER CODE: **M7580**

MOULDING COLOUR —
80 = GREY 81 = RED
82 = BLACK 83 = BLUE

CONTACT FINISH —
05 = GOLD
46 = 100% TIN

- NOTES:
1. RECOMMENDED PIN SIZE = 0.64mm SQUARE.
 2. ALL TOLERANCES ± 0.20 mm UNLESS OTHERWISE STATED.

HARWIN

HARWIN USA TEL: 603 893 5376 FAX: 603 893 5396 mis@harwin.com	HARWIN Europe (UK) TEL: 023 9231 4545 FAX: 023 9231 4590 mis@harwin.co.uk	HARWIN Asia TEL: +65 6 779 4909 FAX: +65 6 779 3868 mis@harwin.com.sg
--	--	--

THIS DRAWING AND ANY INFORMATION OR DESCRIPTIVE MATTER SET OUT HEREON ARE CONFIDENTIAL AND COPYRIGHT PROPERTY OF THE HARWIN GROUP AND MUST NOT BE DISCLOSED, LOANED, COPIED OR USED FOR MANUFACTURING, TENDERING OR FOR ANY OTHER PURPOSE WITHOUT THEIR WRITTEN PERMISSION.

TOLERANCES
X.X = ± 1 mm
X.XX = ± 0.25 mm
X.XXX = ± 0.10 mm
X.XXX = ± 0.01 mm
ANGLES = $\pm 5^\circ$
UNLESS STATED



MATERIAL: SEE ABOVE

FINISH: SEE ABOVE

S/AREA: mm²

Looking for pricing, stock, or lifecycle information?

Click below to explore more details on WIN SOURCE:

-  [View M7581-05 on WIN SOURCE](#)
-  [Harwin Inc. Information](#)

Optimize Your Supply Chain with WIN SOURCE Solutions

-  Global Sourcing Solution
-  Obsolete Management
-  Cost Control Management
-  Shortage Management
-  Alternative Solution
-  Excess Inventory Management