



**THE DATASHEET OF  
A-1PA-178-300N2**



NOTES:

1. ELECTRICAL:

- A. IMPEDANCE: 50Ω (NOMINAL)
- B. FREQUENCY RANGE: DC-3.0 GHz
- C. CONTACT RESISTANCE: CENTER: 20mΩ MAX.: MEASURED AT 10mA MAX. 25 mΩ MAX AFTER CYCLING  
OUTSIDE: 10mΩ MAX. 15 mΩ MAX AFTER CYCLING
- D. INSULATION RESISTANCE: 500MΩ MIN.: MEASURED AT 100 VDC.
- E. D.W.V.: NO LINE OR INSULATION BREAKDOWN: 200 VAC FOR 1 MIN.
- F. VSWR: 1.300 MAX. (DC TO 3.0 GHz)
- G. TYPICAL INSERTION LOSS : [0.00178 x (L in mm) x √Freq. in GHz] + [0.078 x √Freq. in GHz]

2. PHYSICAL:

- A. FEMALE CONTACT HOLDING FORCE: 0.15N MIN. : MEASURED WITH A Ø0.475mm PIN GAUGE.
- B. DURABILITY: 30 CYCLES
- C. TEMPERATURE RANGE: -40°C TO +90°C.
- D. AMC CONNECTOR MATING FORCE: 7 N TYPICAL
- E. AMC CONNECTOR DEMATING FORCE: 4 N MIN 1st CYCLE / 2 N MIN AFTER
- F. AMC INTERFACE IS FULLY COMPATIBLE WITH "U.FL" SERIES PRODUCT.

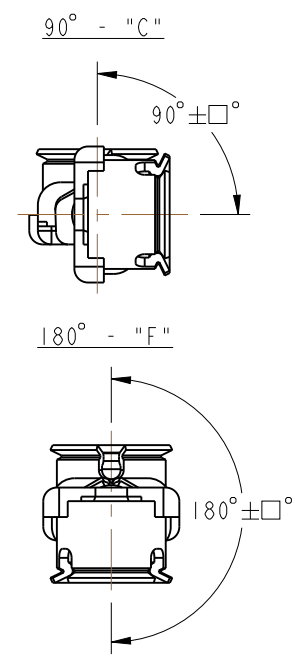
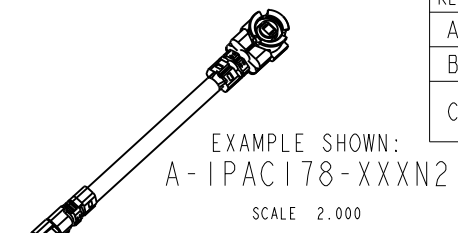
3. MATERIALS AND FINISHES (in micrometers):

CONNECTOR BODY: PHOSPHOR BRONZE, CONTACT PART GOLD PLATED (0.05um MIN.) OVER NICKEL (1um MIN.)  
 CONNECTOR CENTER CONTACT: PHOSPHOR BRONZE, CONTACT PART GOLD PLATED (0.1um MIN.) OVER NICKEL (1um MIN.)  
 CONNECTOR INSULATOR: HIGH TEMP PLASTIC UL 94V-0, WHITE  
 CABLE JACKET: FEP  
 CABLE DIELECTRIC: FEP  
 CABLE CENTER CONDUCTOR: ANNEALED COPPER WIRE STRANDED, SILVER PLATED  
 CABLE OUTER CONDUCTOR: ANNEALED COPPER WIRE BRAID, TIN PLATED

4. PACKAGING:

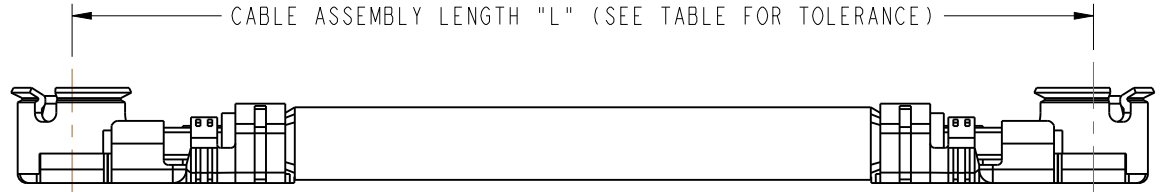
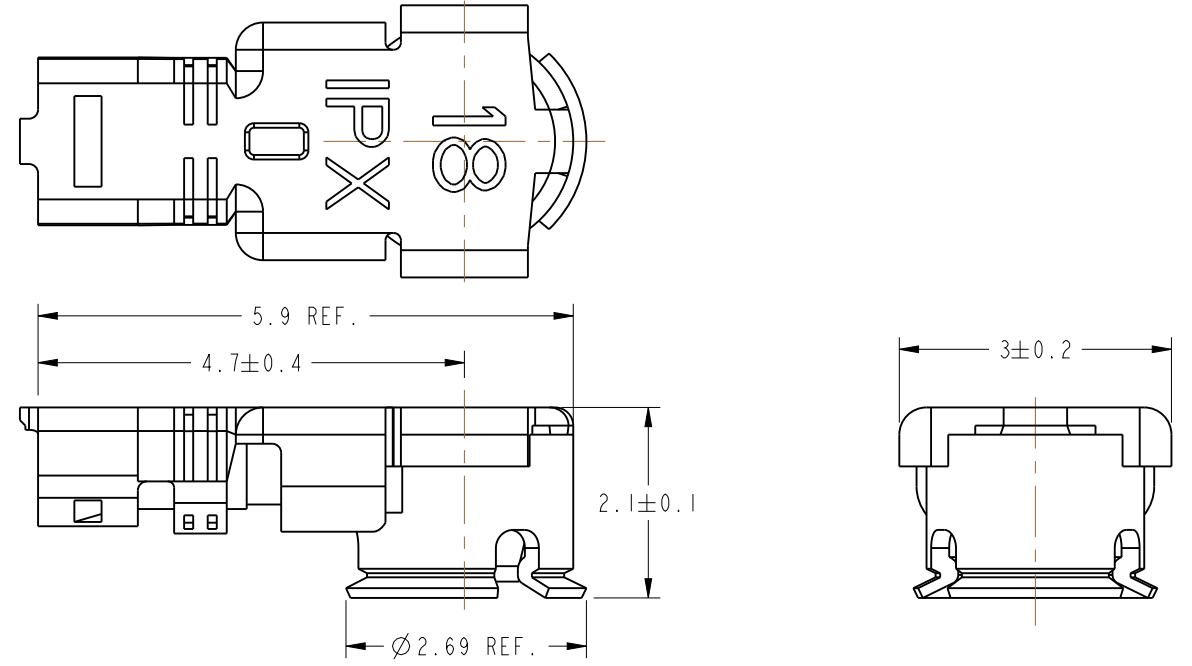
- A. BAGS OF 100 PIECES

REVISIONS				
REV	DESCRIPTION	DATE	ECN	BY
A	RELEASE TO MFG.	9/4/14	50043	BCG
B	UPDATED CONNECTOR DIMENSIONS	3/2/16	50939	MM
C	CONNECTOR BODY WAS SILVER PLATED, SOURCE WAS CHANGED, FORMATS WAS CHANGED	11-Nov-22	16547	SH



CABLE ASSEMBLY TOLERANCES		
OVERALL LENGTH L (mm)	STANDARD TOLERANCE (mm)	ANGULAR TOLERANCE ± °
50 < L < 100	± 4	± 30°
101 < L < 200	± 4	± 45°
201 < L < 500	± 8	± 45°
501 < L < 1000	± 12	± 45°
1001 < L	± 1.5 %	± 45°

AMC RIGHT ANGLE PLUG DETAILS



A-1PAX178-XXXXYZ

SERIES NAME (A=AMC) — NO. OF TERMINATED ENDS (1 OR 2)  
 AMC RIGHT ANGLE PLUG (MHF I) — CABLE COLOR: N=NATURAL (BROWN) B=BLACK  
 ORIENTATION: (CLOCKWISE)  
 C = 90°  
 F = 180°  
 - = 0°  
 CABLE ASSEMBLY LENGTH IN MM (SHORTEST LENGTH IS 50MM) (L < 1000MM)  
 EXAMPLE: 150=150MM 01K=1000MM  
 CHANGE "-" TO "X" WHEN L > 1000MM  
 EXAMPLE: 1020=1020MM  
 CABLE TYPE: (178 = RG-178)

CUSTOMER OUTLINE DRAWING

ALL OTHER SHEETS ARE FOR INTERNAL USE ONLY

NOTICE: These drawings, specifications, or other data (1) are, and remain the property of Amphenol corp. (2) must be returned upon request; and (3) are confidential and not to be disclosed to any person other than those to whom they are given by Amphenol Corp. The furnishing of these drawings, specifications, or other data by Amphenol Corp., or to any other person to anyone for any purpose is not to be regarded by implication or otherwise in any manner licensing, granting rights to permitting such holder or any other person to manufacture, use or sell any product, process or design, patented or otherwise, that may in any way be related to or disclosed by said drawings, specifications, or other data.		UNLESS OTHERWISE SPECIFIED DIMENSIONS ARE METRIC (INCHES) AND TOLERANCES ARE: <0.5mm = ±0.05mm [-0.020 = ±0.002] 0.5 - 6mm = ±0.1mm [-0.020 - 0.236 = ±0.004] >6.00 - 30mm = ±0.2mm [-0.236 - 1.181 = ±0.008] >30.00 - 120mm = ±0.3mm [-1.181 - 4.725 = ±0.012]		MATERIAL		TITLE CABLE ASSY AMC, PLUG		DRAWING NO. A-1PAX178-XXXXYZ ITEM NO. A-1PAX178-XXXXYZ PART NO. A-1PAX178-XXXXYZ		REV
THIRD ANGLE PROJ.	REFERENCE	ENGR.1 L.QIN	ENGR.2 E.WANKOFF	DATE 19-May-14	SHEET NO. 2 OF 2	SCALE: 6.0:1.0	Amphenol RF		C	
	EAR# EAR # 6093	ANGLES = ±1°					B			

## Looking for pricing, stock, or lifecycle information?

Click below to explore more details on WIN SOURCE:

 [View A-1PA-178-300N2 on WIN SOURCE](#)

 [Amphenol Information](#)

## Optimize Your Supply Chain with WIN SOURCE Solutions

-  Global Sourcing Solution
-  Obsolete Management
-  Cost Control Management
-  Shortage Management
-  Alternative Solution
-  Excess Inventory Management