



THE DATASHEET OF

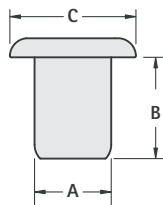
44



WIDE ROLL EYELETS



A choice of the most popular sizes in use for PC board and electronic assembly applications.

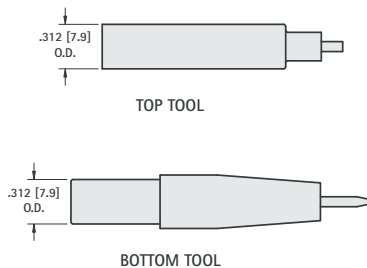


MATERIAL: Brass, Bright Electro Tin, MIL-T-10727. Other platings can be furnished.

CAT. NO.	A OUTSIDE DIAMETER BARREL	B LENGTH UNDER FLANGE	C FLANGE DIAMETER	MTG. HOLE SIZE	STAKING TOOL CAT. NO.
22		.062 (1.57)			
23		.093 (2.36)			
24	.059 (1.49) O.D.	.125 (3.18)	.105 (2.7)	.062 (1.57) USE DRILL #51	3075
25	.045 (1.14) I.D.	.156 (3.96)			
26		.187 (4.75)			
27		.219 (5.56)			
33		.093 (2.36)			
34	.089 (2.26) O.D.	.125 (3.18)	.150 (3.8)	.093 (2.36) USE DRILL #42	3076
35	.070 (1.78) I.D.	.156 (3.96)			
36		.187 (4.75)			
37		.219 (5.56)			
43		.093 (2.36)			
44		.125 (3.18)			
45	.121 (3.07) O.D.	.156 (3.96)	.200 (5.1)	.125 (3.18) USE DRILL #30	3077
46	.102 (2.59) I.D.	.187 (4.75)			
47		.219 (5.56)			
48		.250 (6.35)			
14		.125 (3.18)			
15	.152 (3.86) O.D.	.156 (3.96)	.245 (6.2)	.156 (3.96) USE DRILL 5/32"	3079
16	.132 (3.35) I.D.	.187 (4.75)			
17		.219 (5.56)			

STAKING TOOLS

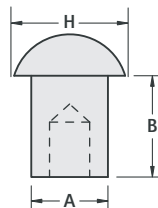
Set consisting of top and bottom tool. Made from Tool Steel and highly polished.



SEMI-TUBULAR RIVETS



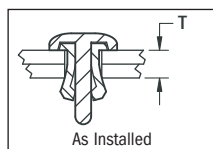
These standardized brass rivets typify the scope and variety of popular rivets that will provide faster and stronger assemblies at lower cost. We suggest you rivet and test a sample before purchasing large quantities for your application.



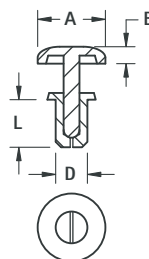
MATERIAL: Brass, Nickel Plate

CAT. NO.	B LENGTH UNDER HEAD	A SHANK DIAMETER	H HEAD DIAMETER	MTG. HOLE SIZE
3381	.125 (3.2)	.060 (1.55)	.109 (2.8)	.067 (1.70) Dia. USE DRILL #51
3382	.156 (3.9)			
3383	.187 (4.8)			
3384	.156 (3.9)	.087 (2.21)	.147 (3.7)	.093 (2.36) Dia. USE DRILL #42
3385	.187 (4.8)			
3386	.218 (5.5)			
3387	.250 (6.4)			
3388	.156 (3.9)			
3389	.187 (4.8)	.120 (3.06)	.218 (5.5)	.128 (3.25) Dia. USE DRILL #30
3390	.218 (5.5)			
3391	.250 (6.4)			

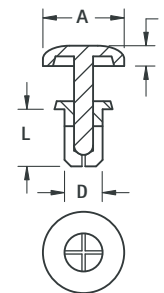
SNAP RIVETS



DWG. 1



DWG. 2





Attach panels and mounting hardware without any tooling. Leaves a clean cosmetic look once installed. Can be installed without access to underside. Removable so assembly can be easily repaired or upgraded.

CAT. NO.	DWG.	T PANEL THICKNESS	L RIVET LENGTH	D RIVET DIAMETER	A HEAD DIAMETER	B HEAD HEIGHT	MTG. HOLE SIZE
3440	1	.051/.079 (1.3/2.0)	.130 (3.3)	.076 (1.9)	.165 (4.2)	.047 (1.2)	.083/.087 (2.1/2.2)
3441	1	.083/.110 (2.1/2.8)	.160 (4.0)				
3442	1	.114/.142 (2.9/3.6)	.190 (4.8)				
3443	2	.118/.157 (3.0/4.0)	.220 (5.6)	.138 (3.5)	.252 (6.4)	.063 (1.6)	.142/.146 (3.6/3.7)
3444	2	.146/.181 (3.7/4.6)	.240 (6.1)				
3445	2	.177/.217 (4.5/5.5)	.280 (7.1)				
3446	2	.217/.256 (5.5/6.5)	.310 (7.9)				
3447	2	.177/.217 (4.5/5.5)	.280 (7.1)				
3448	2	.217/.256 (5.5/6.5)	.310 (7.9)	.158 (4.0)	.315 (8.0)	.071 (1.8)	.161/.165 (4.1/4.2)
3449	2	.256/.295 (6.5/7.5)	.350 (9.0)				
3450	2	.295/.335 (7.5/8.5)	.390 (10.0)				

MATERIAL: Nylon 6/6, UL Rated 94V-2, Black

Looking for pricing, stock, or lifecycle information?

Click below to explore more details on WIN SOURCE:

-  [View 44](#) on WIN SOURCE
-  [Keystone Electronics](#) Information

Optimize Your Supply Chain with WIN SOURCE Solutions

-  Global Sourcing Solution
-  Obsolete Management
-  Cost Control Management
-  Shortage Management
-  Alternative Solution
-  Excess Inventory Management