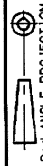


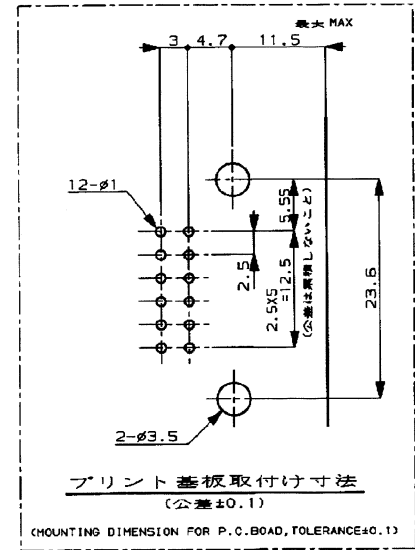
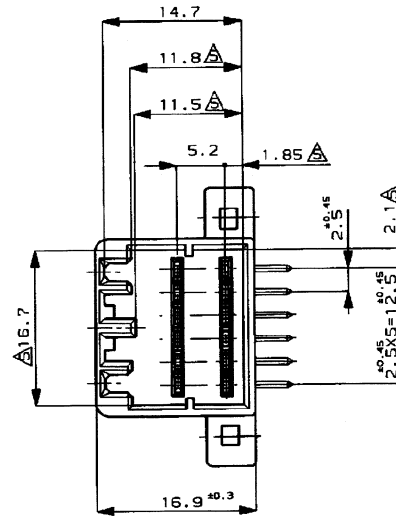
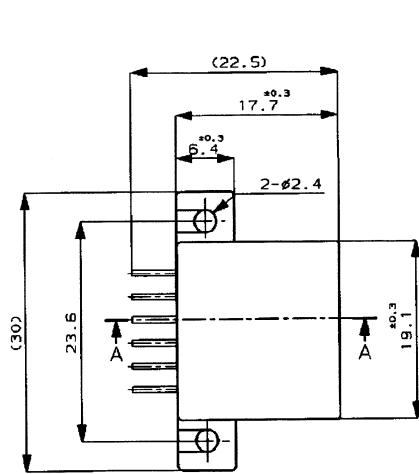
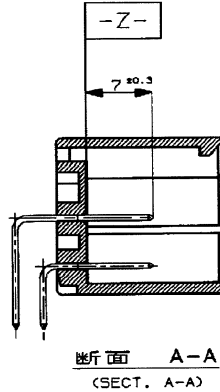
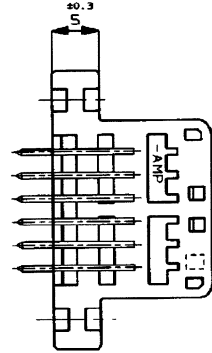
NUMBER C-175974



METRIC

DIMENSIONS IN MILLIMETERS. DO NOT SCALE PRINT

PRINT DIST

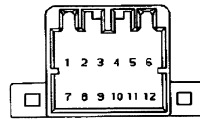
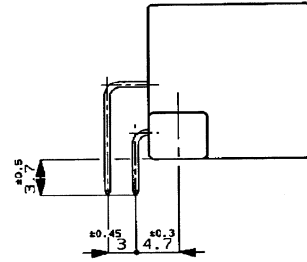


NOTES:

1. APPLICABLE P.C.B BOARD THICKNESS, 1.6mm
 2. RECOMMENDED MOUNTING SCREW 3mm DIA 6mm LENGTH (MIN)
TAPPING SCREW SPECIFIED IN JIS B1115, B1112 (TIGHTENING TORQUE, 4Kg-cm MAX)
 3. THE MATING PLUG HSG. PART NUMBER, 175965
 4. APPLICABLE PRODUCT SPEC NO., 108-5281
- △ TO BE MEASURED WITHIN 2mm FROM -Z-
△ CIRCUIT NUMBER

注:

1. 通用プリント基板厚: 1.6mm
 2. 推奨取付ネジ: JIS B1115, B1122 タッピングネジ、ナベ2種呼び径3、長さ6mm以上(締付トルク: 4Kg-cm以下)
 3. 嵌合相手ハウジング: 175965
 4. 通用製品規格番号: 108-5281
- △ -Z- 面より2mmの範囲で測定
△ 回路番号; 下図参照のこと




SELECTIVE-TIN	PRE-TIN		BLACK	3-175974-2
	PRE-TIN x 9		GREEN	2-175974-4
TIN-LEAD	SELECTIVE GOLD x 3	1, 2, 8		
	PRE-TIN x 9		BLACK	2-175974-2
TIN-LEAD	SELECTIVE GOLD x 3	1, 2, 8		
	PRE-TIN	1~12	BLACK	1-175974-2
	PRE-TIN		BLACK	175974-2
SOLDERING SIDE 半田付け部	CONTACT SIDE 接点部	GOLD PLATED CIRCUIT NO 金めっき回路番号	COLOR 色	PART NUMBER 製品型番
CONTACT FINISH コンタクト仕上		6		

Copyright ©1991 AMP (Japan) LTD. ALL RIGHTS RESERVED.				Copyright ©1991 AMP (Japan) LTD. ALL RIGHTS RESERVED.				tyco Tyco Electronics AMP K.K. Kawasaki, Japan Electronics			
E REVISION PJ10-023-03 TS MS 20/08/89 D 変更 (FJ00-1535-97) DM KS 14/07/91 C 変更 (FJ00-0562-94) SO KO 5/15/91 B 変更 (FJ00-0713-93) SS KO 3/3/93 A 変更 (J-13020) R.Y A.T 2/18/91 O 作成 (J-12178) K.S K.Y 1/22/89				WIRE RANGE 1/28-1/28 mm (AWG -) INSULATION DIA 1/28 mmφ MATERIAL ハウジング:PBT コンタクト: 真鍮 COLOR SEE TABLE				NAME 12極 キャップハウジングアッセンブリ (水平型) .040 シリーズ マルチロック I/O コネクタ MK-II 12pos. CAP HOUSING ASS'Y .040 SERIES MULTI-LOCK I/O CONN. MK-II GENERAL TOLERANCE SIZE LOC NUMBER B J C-175974 SCALE 2-1 REV. E SHEET H			
LTR REVISION RECORD DR CHK DATE				DR. R. Sugita 10/24/89 DE. Z. Yamada 11/24/89 CHK. M. Matsuyama 12/25/89 APP. M. Nishiki 12/26/89							

Looking for pricing, stock, or lifecycle information?

Click below to explore more details on WIN SOURCE:

 [View 175974-2 on WIN SOURCE](#)

 [TE Connectivity](#) Information

Optimize Your Supply Chain with WIN SOURCE Solutions

-  Global Sourcing Solution
-  Obsolete Management
-  Cost Control Management
-  Shortage Management
-  Alternative Solution
-  Excess Inventory Management