



**THE DATASHEET OF  
CM1412-03CP**



# CM1412

## 2-Channel Headset / Microphone EMI Filter Array with ESD Protection

### Product Description

The CM1412 is a dual, low-pass filter array integrating two pi-style filters (C-R-C) that reduce EMI/RFI emissions while providing ESD protection. This part is custom-designed to interface with a microphone port on a cellular telephone or similar device. Each high quality filter provides more than 35 dB attenuation in the 800 to 2700 MHz range. These pi-style filters support bidirectional filtering that control EMI both to and from a microphone element. They also support AC signals, enabling audio signals to pass through without distortion.

In addition, the CM1412 provides a very high level of protection for sensitive electronic components that may be subjected to electrostatic discharge (ESD). The input pins safely dissipate ESD strikes of  $\pm 8$  kV, the maximum requirement of the IEC 61000-4-2 international standard. Using the MIL-STD-883 (Method 3015) specification for Human Body Model (HBM) ESD, the device provides protection for contact discharges to greater than  $\pm 15$  kV.

The CM1412 is particularly well suited for portable electronics (e.g., cellular telephones, PDAs, notebook computers) because of its small package format and low weight. The CM1412 incorporates *OptiGuard*<sup>™</sup> coating which results in improved reliability at assembly and is available in a space-saving, low-profile Chip Scale Package with lead-free finishing.

### Features

- Functionally and Pin Compatible with ON Semiconductor's CSPEMI202A
- *OptiGuard*<sup>™</sup> Coated for Improved Reliability at Assembly
- Two Channels of EMI Filtering
- Pi-Style EMI Filters in a Capacitor-Resistor-Capacitor (C-R-C) Network
- Greater than 40 dB Attenuation at 1 GHz
- $\pm 8$  kV ESD Protection on Each Channel (IEC 61000-4-2 Level 4, Contact Discharge)
- $\pm 15$  kV ESD Protection on Each Channel (HBM)
- Supports AC Signals—Ideal for Audio Applications
- Chip Scale Package Features Extremely Low Lead Inductance for Optimum Filter and ESD Performance
- 5-Bump, 0.930 mm X 1.410 mm Footprint Chip Scale Package (CSP)
- These Devices are Pb-Free and are RoHS Compliant

### Applications

- EMI Filtering and ESD Protection for Headset Microphone Ports
- Wireless Handsets
- Handheld PCs / PDAs
- MP3 Players
- Digital Camcorders
- Notebooks
- Desktop PCs



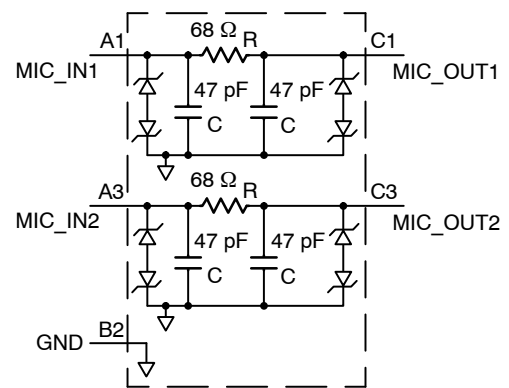
ON Semiconductor®

<http://onsemi.com>

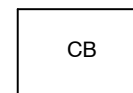


WLCSP5  
CP SUFFIX  
CASE 567AZ

### BLOCK DIAGRAM



### MARKING DIAGRAM



CB = CM1412-03CP

### ORDERING INFORMATION

| Device      | Package          | Shipping <sup>†</sup> |
|-------------|------------------|-----------------------|
| CM1412-03CP | WLCSP5 (Pb-Free) | 3500/Tape & Reel      |

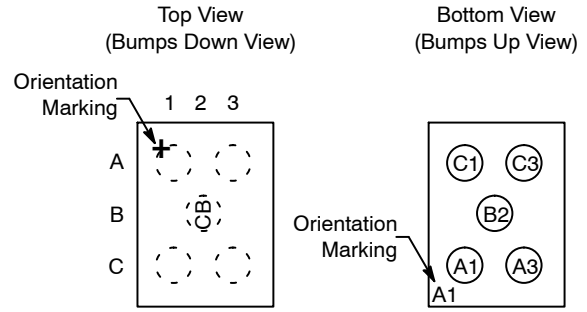
<sup>†</sup>For information on tape and reel specifications, including part orientation and tape sizes, please refer to our Tape and Reel Packaging Specification Brochure, BRD8011/D.

# CM1412

**Table 1. PIN DESCRIPTIONS**

| Pin | Name     | Description                              |
|-----|----------|--|
| A1  | MIC_IN1  | Microphone Input 1 (from Microphone)     |
| A3  | MIC_IN2  | Microphone Input 2 (from Microphone)     |
| B2  | GND      | Device Ground                            |
| C1  | MIC_OUT1 | Microphone Output 1 (to Audio Circuitry) |
| C3  | MIC_OUT2 | Microphone Output 2 (to Audio Circuitry) |

## PACKAGE / PINOUT DIAGRAMS



CM1412  
WLCSP5 Package

## SPECIFICATIONS

**Table 2. ABSOLUTE MAXIMUM RATINGS**

| Parameter                 | Rating      | Units |
|---------------------------|-------------|-------|
| Storage Temperature Range | -65 to +150 | °C    |
| DC Power per Resistor     | 100         | mW    |
| DC Package Power Rating   | 200         | mW    |

Stresses exceeding Maximum Ratings may damage the device. Maximum Ratings are stress ratings only. Functional operation above the Recommended Operating Conditions is not implied. Extended exposure to stresses above the Recommended Operating Conditions may affect device reliability.

**Table 3. STANDARD OPERATING CONDITIONS**

| Parameter                   | Rating     | Units |
|-----------------------------|------------|-------|
| Operating Temperature Range | -40 to +85 | °C    |

**Table 4. ELECTRICAL OPERATING CHARACTERISTICS** (Note 1)

| Symbol             | Parameter  | Conditions                | Min       | Typ        | Max      | Units |
|--------------------|--|---------------------------|-----------|------------|----------|-------|
| R                  | Resistance   |                           | 61        | 68         | 75       | Ω     |
| R <sub>MATCH</sub> | Resistance Matching  |                           |           |            | 5        | %     |
| C                  | Capacitance  |                           | 38        | 47         | 56       | pF    |
| I <sub>LEAK</sub>  | Diode Leakage Current  | V <sub>IN</sub> = 5.0 V   |           |            | 1.0      | μA    |
| V <sub>SIG</sub>   | Signal Voltage<br>Positive Clamp<br>Negative Clamp   | I <sub>LOAD</sub> = 10 mA | 5<br>-15  | 7<br>-10   | 15<br>-5 | V     |
| V <sub>ESD</sub>   | In-system ESD Withstand Voltage<br>a) Human Body Model, MIL-STD-883, Method 3015<br>b) Contact Discharge per IEC 61000-4-2 Level 4 | (Notes 2 and 4)           | ±15<br>±8 |            |          | kV    |
| V <sub>CL</sub>    | Clamping Voltage during ESD Discharge MIL-STD-883 (Method 3015), 8 kV<br>Positive Transients<br>Negative Transients                | (Notes 2, 3 and 4)        |           | +15<br>-19 |          | V     |
| f <sub>C</sub>     | Cut-Off Frequency, Z <sub>SOURCE</sub> = 50 Ω, Z <sub>LOAD</sub> = 50 Ω  | R = 68 Ω, C = 47 pF       |           | 60         |          | MHz   |

1. T<sub>A</sub> = 25°C unless otherwise specified.
2. ESD applied to input and output pins with respect to GND, one at a time.
3. Clamping voltage is measured at the opposite side of the EMI filter to the ESD pin. For example, if ESD is applied to Pin A1, then clamping voltage is measured at Pin C1.
4. Unused pins are left open.

# CM1412

## PERFORMANCE INFORMATION

Typical Filter Performance (nominal conditions unless specified otherwise, 50  $\Omega$  Environment)

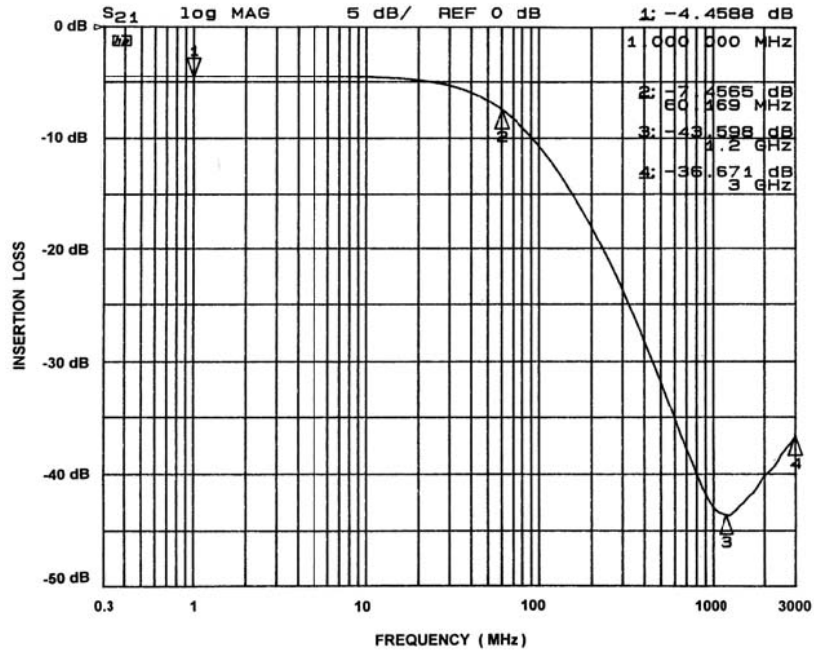


Figure 1. Insertion Loss vs. Frequency (A1-C1 to GND B2)

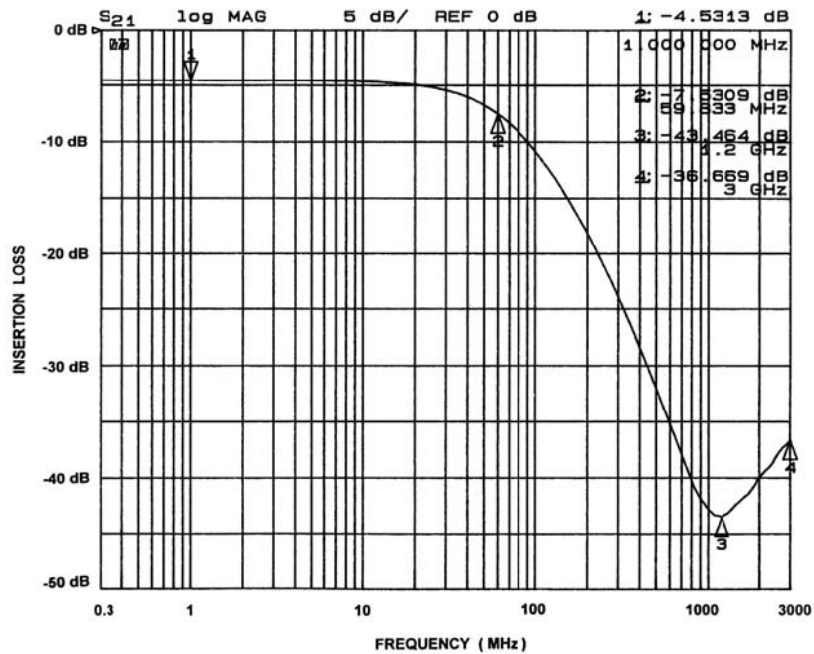


Figure 2. Insertion Loss vs. Frequency (A3-C3 to GND B2)

APPLICATION INFORMATION

| Parameter  | Value                        |
|--|------------------------------|
| Pad Size on PCB  | 0.240 mm                     |
| Pad Shape  | Round                        |
| Pad Definition   | Non-Solder Mask defined pads |
| Solder Mask Opening  | 0.290 mm Round               |
| Solder Stencil Thickness   | 0.125 mm – 0.150 mm          |
| Solder Stencil Aperture Opening (laser cut, 5% tapered walls)                      | 0.300 mm Round               |
| Solder Flux Ratio  | 50/50 by volume              |
| Solder Paste Type  | No Clean                     |
| Pad Protective Finish  | OSP (Entek Cu Plus 106A)     |
| Tolerance – Edge To Corner Ball  | ±50 µm                       |
| Solder Ball Side Coplanarity   | ±20 µm                       |
| Maximum Dwell Time Above Liquidous   | 60 seconds                   |
| Maximum Soldering Temperature for Lead-free Devices using a Lead-free Solder Paste | 260°C                        |

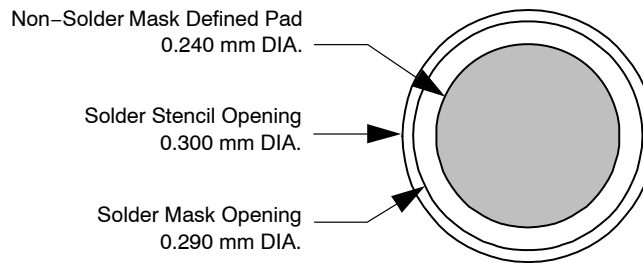


Figure 3. Recommended Non-Solder Mask Defined Pad Illustration

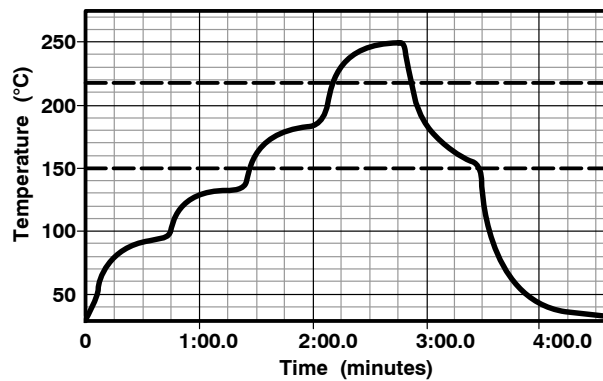
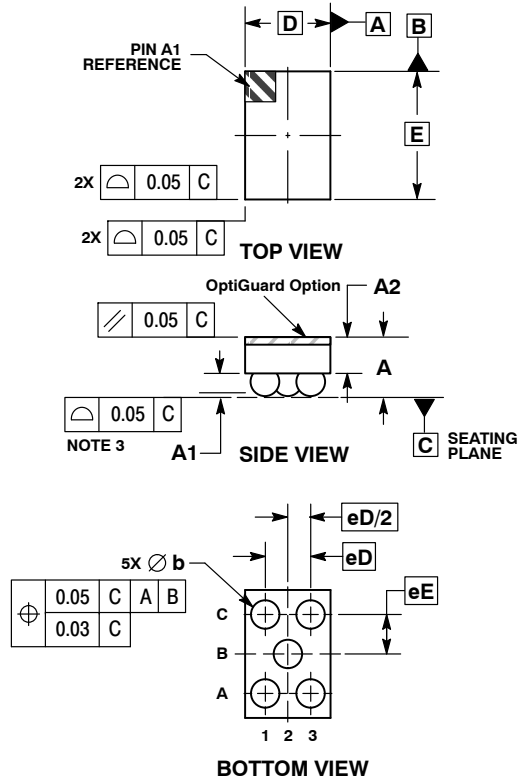


Figure 4. Lead-free (SnAgCu) Solder Ball Reflow Profile

# CM1412

## PACKAGE DIMENSIONS

WLCSP5, 0.94x1.41  
CASE 567AZ-01  
ISSUE 0

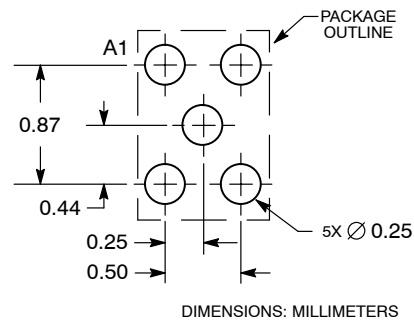


**NOTES:**

1. DIMENSIONING AND TOLERANCING PER ASME Y14.5M, 1994.
2. CONTROLLING DIMENSION: MILLIMETERS.
3. COPLANARITY APPLIES TO SPHERICAL CROWNS OF SOLDER BALLS.

| DIM | MILLIMETERS |      |
|-----|-------------|------|
|     | MIN         | MAX  |
| A   | 0.56        | 0.72 |
| A1  | 0.21        | 0.27 |
| A2  | 0.40 REF    |      |
| b   | 0.29        | 0.35 |
| D   | 0.94 BSC    |      |
| E   | 1.41 BSC    |      |
| eD  | 0.50 BSC    |      |
| eE  | 0.435 BSC   |      |

**RECOMMENDED SOLDERING FOOTPRINT\***



\*For additional information on our Pb-Free strategy and soldering details, please download the ON Semiconductor Soldering and Mounting Techniques Reference Manual, SOLDERRM/D.

OptiGuard is a trademark of Semiconductor Components Industries, LLC (SCILLC).

ON Semiconductor and are registered trademarks of Semiconductor Components Industries, LLC (SCILLC). SCILLC reserves the right to make changes without further notice to any products herein. SCILLC makes no warranty, representation or guarantee regarding the suitability of its products for any particular purpose, nor does SCILLC assume any liability arising out of the application or use of any product or circuit, and specifically disclaims any and all liability, including without limitation special, consequential or incidental damages. "Typical" parameters which may be provided in SCILLC data sheets and/or specifications can and do vary in different applications and actual performance may vary over time. All operating parameters, including "Typicals" must be validated for each customer application by customer's technical experts. SCILLC does not convey any license under its patent rights nor the rights of others. SCILLC products are not designed, intended, or authorized for use as components in systems intended for surgical implant into the body, or other applications intended to support or sustain life, or for any other application in which the failure of the SCILLC product could create a situation where personal injury or death may occur. Should Buyer purchase or use SCILLC products for any such unintended or unauthorized application, Buyer shall indemnify and hold SCILLC and its officers, employees, subsidiaries, affiliates, and distributors harmless against all claims, costs, damages, and expenses, and reasonable attorney fees arising out of, directly or indirectly, any claim of personal injury or death associated with such unintended or unauthorized use, even if such claim alleges that SCILLC was negligent regarding the design or manufacture of the part. SCILLC is an Equal Opportunity/Affirmative Action Employer. This literature is subject to all applicable copyright laws and is not for resale in any manner.

**PUBLICATION ORDERING INFORMATION**

**LITERATURE FULFILLMENT:**  
Literature Distribution Center for ON Semiconductor  
P.O. Box 5163, Denver, Colorado 80217 USA  
**Phone:** 303-675-2175 or 800-344-3860 Toll Free USA/Canada  
**Fax:** 303-675-2176 or 800-344-3867 Toll Free USA/Canada  
**Email:** orderlit@onsemi.com

**N. American Technical Support:** 800-282-9855 Toll Free USA/Canada  
**Europe, Middle East and Africa Technical Support:**  
Phone: 421 33 790 2910  
**Japan Customer Focus Center**  
Phone: 81-3-5773-3850

**ON Semiconductor Website:** [www.onsemi.com](http://www.onsemi.com)  
**Order Literature:** <http://www.onsemi.com/orderlit>  
For additional information, please contact your local Sales Representative

## Looking for pricing, stock, or lifecycle information?

Click below to explore more details on WIN SOURCE:

- ⊖ [View CM1412-03CP](#) on WIN SOURCE
- ⊖ [ON Semiconductor](#) Information

## Optimize Your Supply Chain with WIN SOURCE Solutions

- ✓ Global Sourcing Solution
- ✓ Obsolete Management
- ✓ Cost Control Management
- ✓ Shortage Management
- ✓ Alternative Solution
- ✓ Excess Inventory Management