



**THE DATASHEET OF**  
**1497**





## Heyco® Original Strain Relief Bushings

Straight-Thru for Round Cables

.875" (22,2 mm) to 1.187" (30,1 mm) Mounting Holes

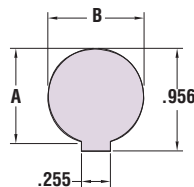
Fit 1/2" or 3/4" Electrical Knock-out Hole Sizes

- **Protects the lifeline of your electric/ electronic products** by absorbing the forces of pull, push, and twist that may be exerted on the flexible power cord.
- Securely anchors, insulates, and protects cables at panel entry points.
- Sizes SR 7-Series to SR 9-Series for mounting hole diameters from .875" (22,2 mm) to 1.187" (28,6 mm).
- Sizes for thin .062" (1,6 mm) panel available: SR 8N-2  
See chart for details.
- See page 4-38 for corresponding **Mounting Hole Plugs** which can be used to fill blank/unused Mounting Holes and thus allow for a single panel design for multiple applications.
- Consult Heyco for other wire types and sizes.
- See pages 4-27 & 4-28 for SR assembly tools.
- For Double D Mounting Hole Punches, see page 4-30.

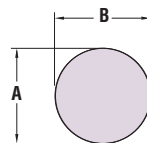
| WILL FIT THESE CABLES        |                 |                  |                              | PANEL DIMENSIONS     |      |                              |      |                               |      | PART NO. |         | DESCRIPTION | PART DIM.     |               | Mounting Hole Plug PART NO. |      |               |
|------------------------------|-----------------|------------------|------------------------------|----------------------|------|------------------------------|------|-------------------------------|------|----------|---------|-------------|---------------|---------------|-----------------------------|------|---------------|
| UL Type                      | AWG/ Conductors | Approximate Size |                              | A Mounting Hole Dia. |      | B To Prevent Rotation        |      | Finished Fit Panel Thickness* |      | Black    | White   |             | C BODY LENGTH |               |                             |      |               |
|                              |                 | in.              | mm.                          | in.                  | mm.  | in.                          | mm.  | in.                           | mm.  |          |         | in.         | mm.           |               |                             |      |               |
| SJ, SJT & SJO                | 16/2            | .325             | 8,3                          | .875                 | 22,2 | .770                         | 19,6 | .125                          | 3,2  | 1240     | 1241    | SR 7K-2     | .750          | 19,1          | 2509                        |      |               |
|                              | 18/3            | .330             | 8,4                          |                      |      |                              |      |                               |      |          |         |             |               |               |                             |      |               |
|                              | 14/2            | .350             | 8,9                          |                      |      |                              |      |                               |      |          |         |             |               |               |                             |      |               |
|                              | 16/3            | .355             | 9,0                          |                      |      |                              |      |                               |      |          |         |             |               |               |                             |      |               |
|                              | 18/4            | .360             | 9,1                          |                      |      |                              |      |                               |      |          |         |             |               |               |                             |      |               |
| Same as SR 7K-2 above except |                 |                  |                              | See Schematic        |      |                              |      | .125                          | 3,2  | 1271     | 1272    | SR 7KR-2    | .750          | 19,1          | 2509                        |      |               |
| SJT                          | 14/3            | .370             | 9,4                          | .875                 | 22,2 | .770                         | 19,6 | .125                          | 3,2  | 1247     | 1248    | SR 7W-2     | .750          | 19,1          | 2509                        |      |               |
|                              | 12/3            | .425             | 10,8                         |                      |      |                              |      |                               |      |          |         |             |               |               |                             |      |               |
| S, SO, & ST                  | 18/2            | .390             | 9,9                          |                      |      |                              |      |                               |      |          |         |             |               |               |                             |      |               |
|                              | 18/3            | .405             | 10,3                         |                      |      |                              |      |                               |      |          |         |             |               |               |                             |      |               |
|                              | 16/2            | .405             | 10,3                         |                      |      |                              |      |                               |      |          |         |             |               |               |                             |      |               |
| 16/3                         | .430            | 10,9             | Same as SR 7W-2 above except |                      |      |                              | .200 | 5,1                           | 1250 | 1251     | SR 7L-2 | .750        | 19,1          | consult Heyco |                             |      |               |
| SJT                          | 12/3            | .425-.475        | 10,8-12,1                    | .875                 | 22,2 | .840                         | 21,3 | .125                          | 3,2  | 1497     | 1498    | SR 31-2     | .812          | 20,6          | 2509                        |      |               |
| S & ST                       | 14/2            | .530             | 13,5                         |                      |      |                              |      |                               |      |          |         |             |               |               |                             |      |               |
|                              | 14/3            | .560             | 14,2                         |                      |      |                              |      |                               |      |          |         |             |               |               |                             |      |               |
| 12/2                         | .600            | 15,3             | Same as SR 8N-2 above except |                      |      |                              | .125 | 3,2                           | 1260 | 1261     | SR 8P-2 | .812        | 20,6          | 2509          |                             |      |               |
| S                            | 12/2            | .600             | 15,2                         | 1.093                | 27,7 | 1.000                        | 25,4 | .281                          | 7,1  | 1287     | 1288    | SR 9P-2     | 1.000         | 25,4          | 2717                        |      |               |
|                              | 12/3            | .635             | 16,1                         |                      |      |                              |      |                               |      |          |         |             |               |               |                             |      |               |
|                              | 10/2            | .640             | 16,3                         |                      |      |                              |      |                               |      |          |         |             |               |               |                             |      |               |
| S, SO & ST                   | 10/3            | .690             | 17,5                         | 1.187                | 30,2 | Same as SR 8N-2 above except |      |                               |      | .187     | 4,8     | 1274        | 1275          | SR 8L-1       | .812                        | 20,6 | consult Heyco |
|                              |                 |                  |                              |                      |      | SRDT                         | 10/4 |                               |      |          |         |             |               |               |                             |      |               |

Standard color black. Consult Heyco for other colors.

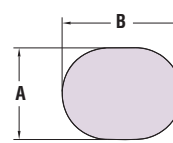
\*Maximum Panel Thickness. Part has additional clearance. Consult Heyco for your Custom Finished Fit Panel Thickness.



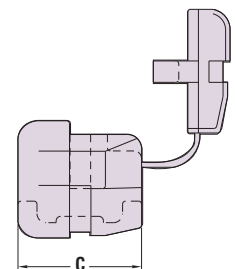
FOR SR-7KR-2 ONLY



STANDARD MOUNTING HOLES



ELONGATED MOUNTING HOLE



Quick Specs

|                     |                                                                                                                                               |
|---------------------|-----------------------------------------------------------------------------------------------------------------------------------------------|
| Material            | Nylon 6/6                                                                                                                                     |
| Certifications      | Recognized under the Component Program of Underwriters' Laboratories File E15331<br>Certified by the Canadian Standards Association File 8919 |
| Flammability Rating | 94V-2                                                                                                                                         |
| Temperature Range   | -.04°F (-18°C) to 221°F (105°C)                                                                                                               |

## Looking for pricing, stock, or lifecycle information?

Click below to explore more details on WIN SOURCE:

-  [View 1497 on WIN SOURCE](#)
-  [Heyco Products Corporation](#) Information

## Optimize Your Supply Chain with WIN SOURCE Solutions

-  Global Sourcing Solution
-  Obsolete Management
-  Cost Control Management
-  Shortage Management
-  Alternative Solution
-  Excess Inventory Management