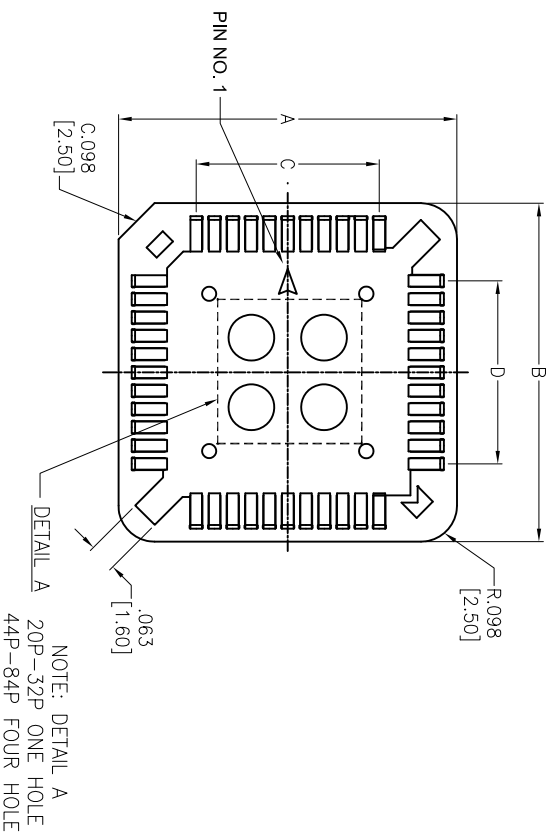
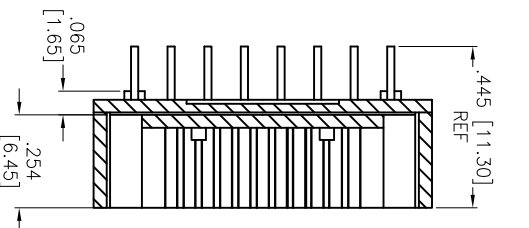




# THE DATASHEET OF PLCC-44-AT



Rev	AWO #	Description	Date	Appr
-		RELEASED	11/8/04	
A		ADDED PLATING THICKNESS	01/07/14	
B		UPDATE DRAWING	2/25/20	LH/RC
C		ADDED SHT 2 PINOUT	12/28/22	SS



A		B		C		D		E		F	
INCHES	MM	INCHES	MM	INCHES	MM	INCHES	MM	INCHES	MM	INCHES	MM
0.610	15.50	0.610	15.50	0.200	5.08	0.200	5.08	0.200	5.08	0.200	5.08
0.710	18.04	0.710	18.04	0.300	7.62	0.300	7.62	0.300	7.62	0.300	7.62
0.710	18.04	0.811	20.60	0.300	7.62	0.400	10.16	0.300	7.62	0.400	10.16
0.924	23.48	0.924	23.48	0.500	12.70	0.500	12.70	0.500	12.70	0.500	12.70
1.018	25.88	1.018	25.88	0.600	15.24	0.600	15.24	0.600	15.24	0.600	15.24
1.246	31.66	1.246	31.66	0.800	20.32	0.800	20.32	0.800	20.32	0.800	20.32
1.443	36.66	1.443	36.66	1.000	25.40	1.000	25.40	1.000	25.40	1.000	25.40

dated UL 94V-0

ax

0 VAC for 1 minute

UNLESS OTHERWISE SPECIFIED  
ALL DIMENSIONS ARE INCHES [MM]  
TOLERANCES: EXCEPT AS NOTED  
INCHES Holes  
.X ±.10 ØXX ±.10  
.XX ±.020 ØXXX ±.015  
.XXX ±.015 ØXXXX ±.010

**ADAM TECH** 909 Rahway Avenue,  
Union, NJ 07083  
Phone: 908-687-5000  
Fax: 908-687-5710

**INTERCONNECTS**

PLCC SOCKET, 20 ~ 84 POSITION, PCB



APPROVALS	DATE
DRAWN	SS
CHECKED	
APPROVED	

SIZE	PART NO.	REV
X	PLCC-XX-AT	C
REF: S00088T	SCALE: NTS	SHEET 1 OF 2

5

4

3

2

1

A

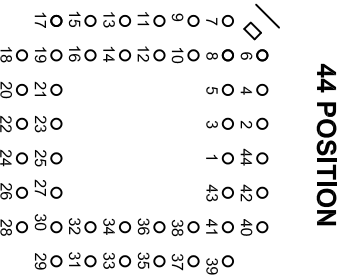
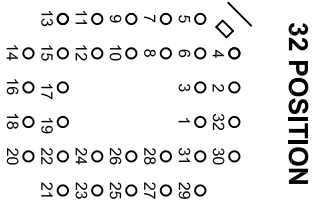
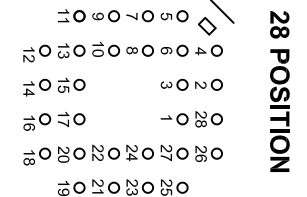
B

C

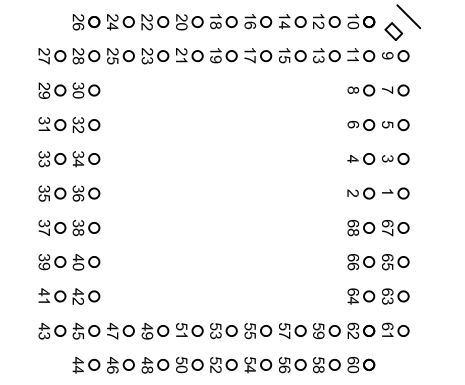
D

Rev	AWO #	Description	Date	Appr
		SEE SH1 1 FOR REVISION		

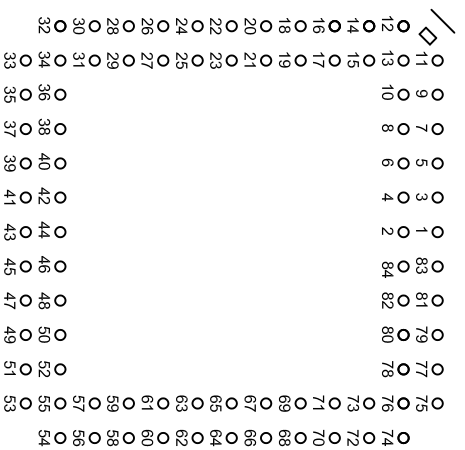
## LAYOUT DIAGRAM



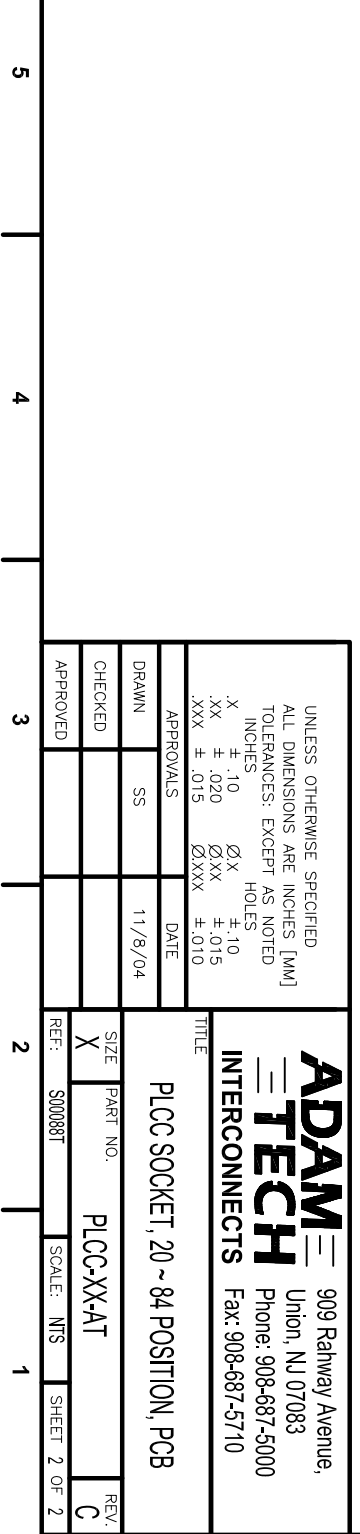
**68 POSITION**



**84 POSITION**





UNLESS OTHERWISE SPECIFIED ALL DIMENSIONS ARE INCHES [MM] TOLERANCES: EXCEPT AS NOTED		INCHES		HILES	
.X	± .10	ØX	± .10		
.XX	± .020	ØXXX	±.015		
.XXX	± .015	ØXXXX	±.010		
APPROVALS		DATE		TITLE	
DRAWN	SS	11/8/04		PLCC SOCKET, 20 ~ 84 POSITION, PCB	
CHECKED				ADAM TECH 909 Rahway Avenue, Union, NJ 07083 Phone: 908-687-5000 Fax: 908-687-5710	
APPROVED				INTERCONNECTS	
SIZE		PART NO.		REV.	
X		PLCC-XX-AT		C	
REF: S00088T		SCALE: NTS		SHEET 2 OF 2	



## Looking for pricing, stock, or lifecycle information?

Click below to explore more details on WIN SOURCE:

-  [View PLCC-44-AT on WIN SOURCE](#)
-  [Adam Technologies, Inc. Information](#)

## Optimize Your Supply Chain with WIN SOURCE Solutions

-  Global Sourcing Solution
-  Obsolete Management
-  Cost Control Management
-  Shortage Management
-  Alternative Solution
-  Excess Inventory Management