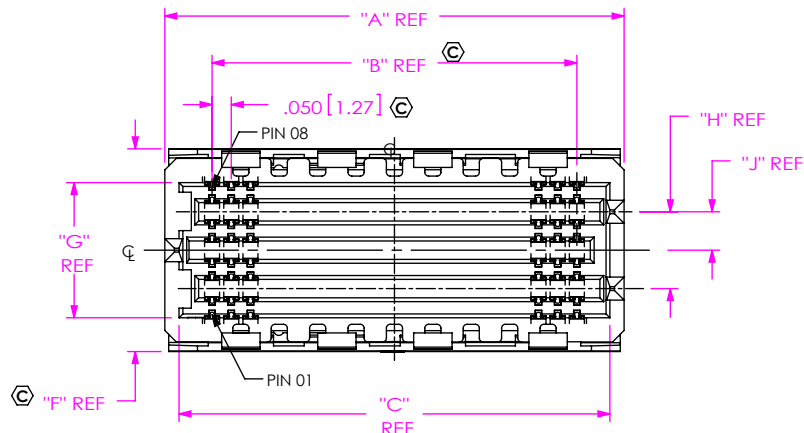




**THE DATASHEET OF  
SEAMI-20-11.0-L-04-2-A-K-TR**



DO NOT SCALE FROM THIS PRINT



SEAMI-XX-XX.X-XX-XX-X-A-K-XR

No. OF POSITIONS

-20, -30, -40, -50 (PER ROW)

LEAD STYLE

\*-07.0  
\*-11.0  
\*-13.0

PLATING

-L: 10µ GOLD IN CONTACT AREA, MATTE TIN ON TAIL (USE NEW-SUB-T-1M38-XX.X-L-X)  
-SM: 30µ SELECTIVE GOLD IN CONTACT AREA, MATTE TIN ON TAIL (USE NEW-SUB-T-1M38-XX.X-S-X)  
-S: 30µ SELECTIVE GOLD IN CONTACT AREA, MATTE TIN ON TAIL (USE NEW-SUB-T-1M38-XX.X-S-X)

(\* = NOT TOOLED)

ROW

-04: 4 ROW  
-06: 6 ROW  
-08: 8 ROW  
-10: 10 ROW

TAPE & REEL (SEE NOTES 6 & 13)

-TR: TAPE & REEL  
-FR: FULL REEL QTY TAPE & REEL

POLYIMIDE PAD (SEE NOTE 7)

(SEE FIG 4. SHT 3)  
DOT APPLICATOR-KAPTON TAPE.  
-04 ROW: USE K-DOT-.236-.343-.005  
-06 ROW: USE K-DOT-.236-.343-.005  
-08 ROW: USE K-DOT-.325-.450-.005  
-10 ROW: USE K-DOT-.404-.500-.005

ALIGNMENT PINS

SOLDER COMPOSITION & STYLE

-1: 63% TIN / 37% LEAD CHARGE TAIL (USE NEW-SUB-T-1M38-XX.X-X-1) (SEE NOTE 8)  
-2: 96.5% TIN / 3.5% SILVER CHARGE TAIL (USE NEW-SUB-T-1M38-XX.X-X-2) (SEE NOTE 8)

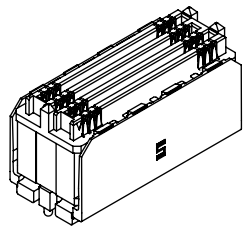
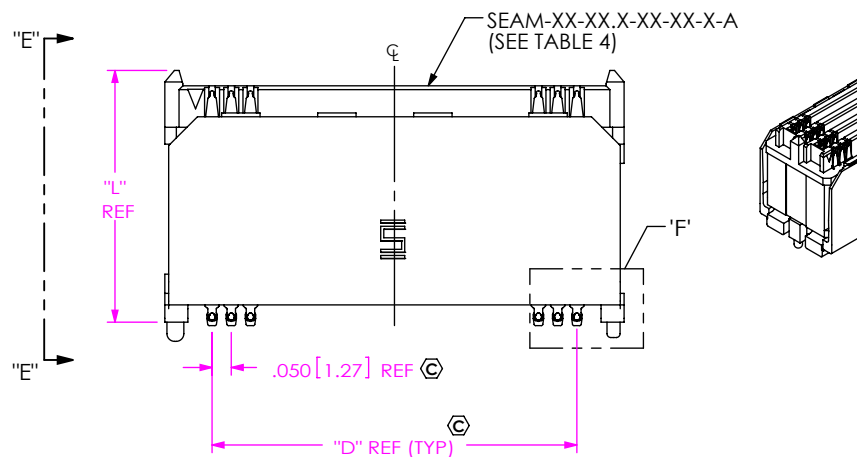


TABLE 1				
STACK HEIGHT				
SEAMI LEAD STYLE	SEAF LEAD STYLE			
	-05.0	-06.0	-06.5	-07.5
-07.0	12mm	13mm	13.5mm	14.5mm
-11.0	16mm	17mm	17.5mm	18.5mm
-13.0	18mm	19mm	19.5mm	20.5mm

TABLE 2					
No. OF POS	"A"	"B"	"C"	"D"	"E"
-20	1.196 [30.38]	.950 [24.13]	1.122 [28.50]	.950 [24.13]	1.141 [28.98]
-30	1.696 [40.08]	1.450 [36.83]	1.622 [41.20]	1.450 [36.83]	1.641 [41.68]
-40	2.196 [55.78]	1.950 [49.53]	2.122 [53.90]	1.950 [49.53]	2.141 [54.38]
-50	2.696 [68.48]	2.450 [62.23]	2.622 [66.60]	2.450 [62.23]	2.641 [67.08]

TABLE 3					
No. OF ROWS	"F"	"G"	"H"	"J"	"K"
-04	.328 [8.33]	.152 [3.86]	.100 [2.54]	.050 [1.27]	.079 [2.01]
-06	.419 [10.64]	.252 [6.40]	.100 [2.54]	.050 [1.27]	.120 [3.05]
-08	.528 [13.41]	.352 [8.94]	.200 [5.08]	.100 [2.54]	.120 [3.05]
-10	.628 [15.95]	.452 [11.48]	.300 [7.62]	.150 [3.81]	.120 [3.05]

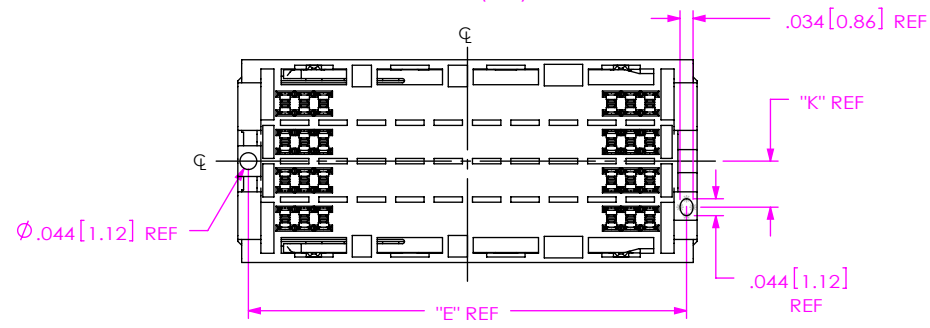


TABLE 4						
ROW	STYLE	"L"	"M"	"N"	SEAM CONNECTOR ASSY**	SEAMI INSULATOR P/N
-04	-07.0	.417 [10.59]	.271 [6.88]	.098 [2.49]	SEAM-XX-07.0-XX-04-XA	SEAMI-XX-07.0-04
	-11.0	.575 [14.61]	.429 [10.90]	.256 [6.50]	SEAM-XX-11.0-XX-04-XA	SEAMI-XX-11.0-04
	-13.0	.654 [16.61]	.508 [12.90]	.335 [8.51]	SEAM-XX-13.0-XX-04-XA	SEAMI-XX-13.0-04
-06	-07.0	.419 [10.64]	.271 [6.88]	.098 [2.49]	SEAM-XX-07.0-XX-06-XA	SEAMI-XX-07.0-06
	-11.0	.577 [14.66]	.429 [10.90]	.256 [6.50]	SEAM-XX-11.0-XX-06-XA	SEAMI-XX-11.0-06
	-13.0	.656 [16.66]	.508 [12.90]	.335 [8.51]	SEAM-XX-13.0-XX-06-XA	SEAMI-XX-13.0-06
-08	-07.0	.419 [10.64]	.271 [6.88]	.098 [2.49]	SEAM-XX-07.0-XX-08-XA	SEAMI-XX-07.0-08
	-11.0	.577 [14.66]	.429 [10.90]	.256 [6.50]	SEAM-XX-11.0-XX-08-XA	SEAMI-XX-11.0-08
	-13.0	.656 [16.66]	.508 [12.90]	.335 [8.51]	SEAM-XX-13.0-XX-08-XA	SEAMI-XX-13.0-08
-10	-07.0	.419 [10.64]	.271 [6.88]	.098 [2.49]	SEAM-XX-07.0-XX-10-XA	SEAMI-XX-07.0-10
	-11.0	.577 [14.66]	.429 [10.90]	.256 [6.50]	SEAM-XX-11.0-XX-10-XA	SEAMI-XX-11.0-10
	-13.0	.656 [16.66]	.508 [12.90]	.335 [8.51]	SEAM-XX-13.0-XX-10-XA	SEAMI-XX-13.0-10

\*\* = DELETE -GP, -EP, -K & -TR OPTIONS

- NOTES:
1. © REPRESENTS A CRITICAL DIMENSION.
  2. MINIMUM PUSHOUT FORCE: 0.75 LBS.
  3. POLYIMIDE PAD WILL BE SUPPLIED WHETHER OR NOT -K IS SPECIFIED.
  4. NOTE DELETED.
  5. NOTE DELETED.
  6. ATTACH LABEL "SEAX-0001" TO EACH TAPE & REEL PACKAGE.
  7. POLYIMIDE PAD WILL BE SUPPLIED WHETHER OR NOT -K IS SPECIFIED.
  8. SOLDER CHARGE VOLUME IS 0.00000891 CU. IN. - REF.
  9. DIMENSION C13 MUST BE MEASURED USING INSPECTION FIXTURE AT-1817-836-1 FOR 4 OR AT-1817-836-2 FOR 6, 8 AND 10 ROW. USE CO-AU-WI-2003-M FOR PROCESS.
  10. MINIMUM PUSHOUT FORCE OF SEAMI PLASTIC INSERT: 1.5LBS.
  11. MAXIMUM ROW TO ROW VARIATION: .003 [0.08]
  12. A 20-30 °C TEMPERATURE DIFFERENCE MAY EXIST BETWEEN THIS HIGH-DENSITY COMPONENT AND THE BOARD SURFACE DURING REFLOW. SAMTEC RECOMMENDS A THERMAL STUDY BE PERFORMED TO UNDERSTAND THE TEMPERATURE GRADIENTS YOU MAY EXPERIENCE.
  13. ORDERS WILL BE PACKAGED ACCORDING TO THE SAMTEC PACKAGING EFFICIENCY STANDARDS (SPES) FOUND ON WWW.SAMTEC.COM.

FIG 1 SEAMI-20-13.0-XX-08-X-A-K-XR SHOWN CENTER DETAILS NOT SHOWN FOR CLARITY

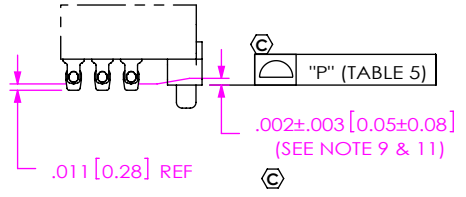
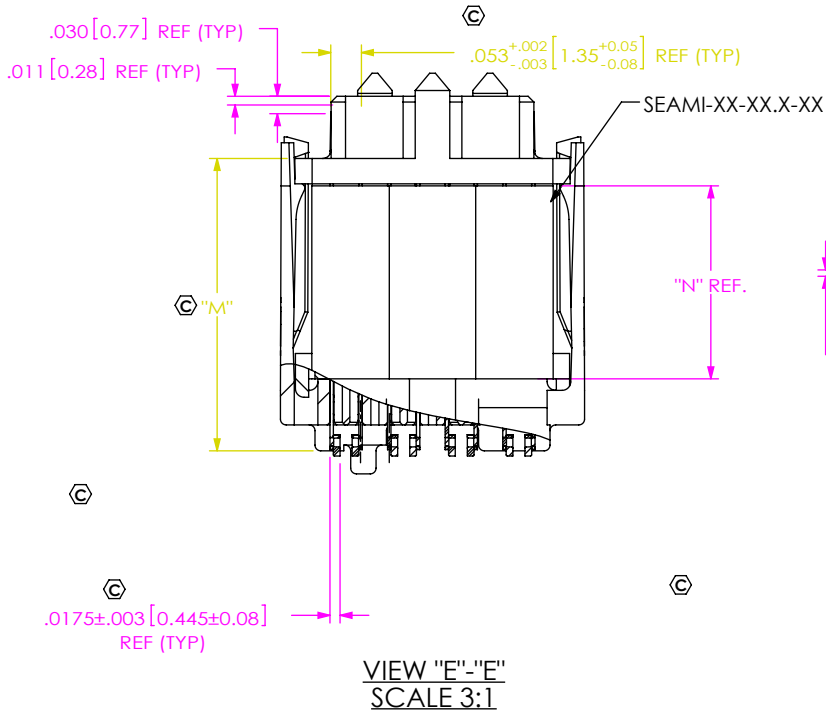
UNLESS OTHERWISE SPECIFIED, DIMENSIONS ARE IN INCHES.  
TOLERANCES ARE:  
DECIMALS ANGLES  
.XX: ±.01 [3]  
.XXX: ±.005 [13]  
.XXXX: ±.0020 [051]

PROPRIETARY NOTE  
THIS DOCUMENT CONTAINS CONFIDENTIAL AND PROPRIETARY INFORMATION AND ALL DESIGN, MANUFACTURING, REPRODUCTION, USE, PATENT RIGHTS AND SALES RIGHTS ARE EXPRESSLY RESERVED BY SAMTEC, INC. THIS DOCUMENT SHALL NOT BE DISCLOSED, IN WHOLE OR PART, TO ANY UNAUTHORIZED PERSON OR ENTITY NOR REPRODUCED, TRANSFERRED OR INCORPORATED IN ANY OTHER PROJECT IN ANY MANNER WITHOUT THE EXPRESS WRITTEN CONSENT OF SAMTEC, INC.



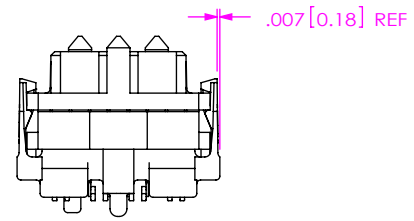
520 PARK EAST BLVD, NEW ALBANY, IN 47150  
PHONE: 812-944-6733 FAX: 812-948-5047  
e-Mail info@SAMTEC.com code 53322

MATERIAL: DO NOT SCALE DRAWING	SHEET SCALE: 2:1	DESCRIPTION: 85 OHM, DIFFERENTIAL, .050 PITCH TERM. ARRAY ASM
INSULATORS: LCP. COLOR: BLACK	TERMINAL: COPPER ALLOY	DWG. NO. SEAMI-XX-XX.X-XX-XX-X-A-K-XR
		BY: KNOWLDEN 7/20/2010 SHEET 1 OF 3

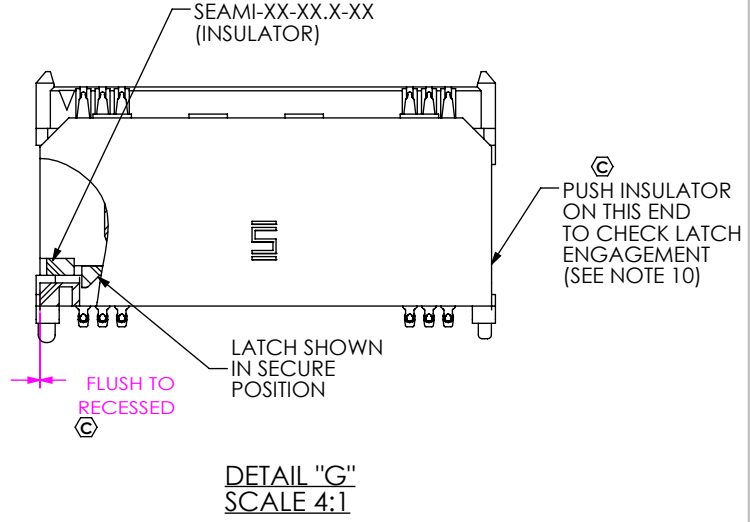
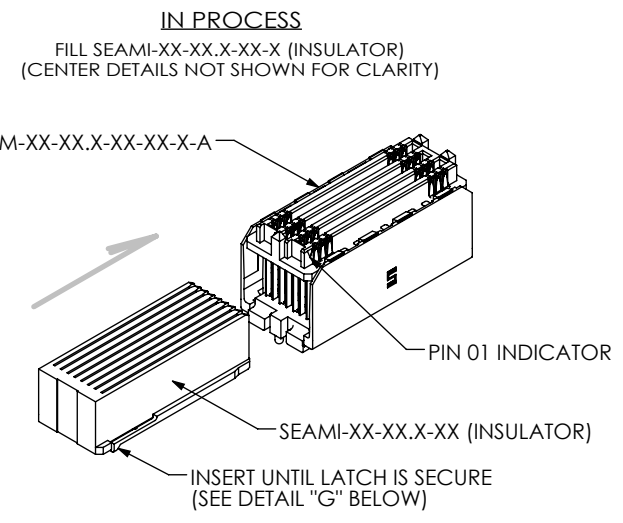


**TABLE 5**

No. OF POS.	"P"
20-30	.006 [0.152]
40-50	.009 [0.229]



**FIG 2**  
SEAMI-20-07.0-XX-08-X-A-K-XR SHOWN  
SAME AS FIG 1, EXCEPT AS SHOWN  
(CENTER DETAILS NOT SHOWN FOR CLARITY)



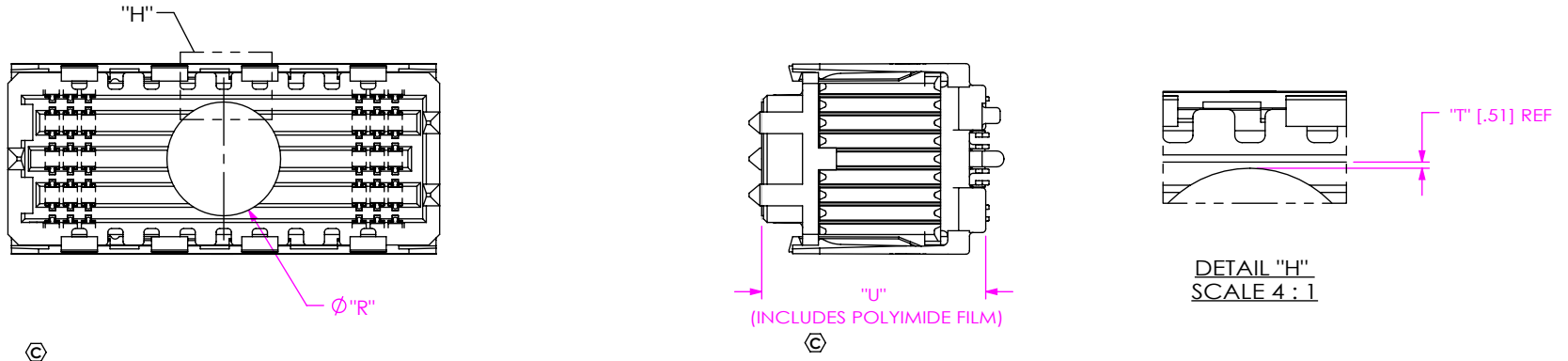
**PROPRIETARY NOTE**  
THIS DOCUMENT CONTAINS CONFIDENTIAL AND PROPRIETARY INFORMATION AND ALL DESIGN, MANUFACTURING, REPRODUCTION, USE, PATENT RIGHTS AND SALES RIGHTS ARE EXPRESSLY RESERVED BY SAMTEC, INC. THIS DOCUMENT SHALL NOT BE DISCLOSED, IN WHOLE OR PART, TO ANY UNAUTHORIZED PERSON OR ENTITY NOR REPRODUCED, TRANSFERRED OR INCORPORATED IN ANY OTHER PROJECT IN ANY MANNER WITHOUT THE EXPRESS WRITTEN CONSENT OF SAMTEC, INC.

DO NOT SCALE DRAWING  
SHEET SCALE: 2:1



520 PARK EAST BLVD, NEW ALBANY, IN 47150  
PHONE: 812-944-6733 FAX: 812-948-5047  
e-Mail info@SAMTEC.com code 55322

DESCRIPTION:  
85 OHM, DIFFERENTIAL, .050 PITCH TERM. ARRAY ASM  
DWG. NO.  
**SEAMI-XX-XX.X-XX-X-A-K-XR**  
BY: KNOWLDEN 7/20/2010 SHEET 2 OF 3



**FIG 4**  
 -K: POLYIMIDE PAD  
 SEAMI-20-13.0-XX-08-X-A-K-XR SHOWN  
 SAME AS FIG 1, EXCEPT AS SHOWN  
 (CENTER DETAILS NOT SHOWN FOR CLARITY)

TABLE 7	
LEAD STYLE	"U"
-07.0	0.384 [9.75]
-11.0	0.542 [13.77]
-13.0	0.621 [15.77]

TABLE 6							
ROW	Ø "R"	"S"					"T"
		10 POS	20 POS	30 POS	40 POS	50 POS	
-04	.236 [6.00]	.230 [5.84]	.480 [12.19]	.730 [18.54]	.980 [24.89]	1.230 [31.24]	.042 [1.07]
-06	.236 [6.00]	.230 [5.84]	.480 [12.19]	.730 [18.54]	.980 [24.89]	1.230 [31.24]	.008 [0.20]
-08	.325 [8.25]	.186 [4.71]	.436 [11.06]	.686 [17.41]	.936 [23.76]	1.186 [30.11]	.014 [0.36]
-10	.404 [10.25]	.146 [3.71]	.396 [10.06]	.646 [16.41]	.896 [22.76]	1.146 [29.11]	.024 [0.61]

**PROPRIETARY NOTE**  
 THIS DOCUMENT CONTAINS CONFIDENTIAL AND PROPRIETARY INFORMATION AND ALL DESIGN, MANUFACTURING, REPRODUCTION, USE, PATENT RIGHTS AND SALES RIGHTS ARE EXPRESSLY RESERVED BY SAMTEC, INC. THIS DOCUMENT SHALL NOT BE DISCLOSED, IN WHOLE OR PART, TO ANY UNAUTHORIZED PERSON OR ENTITY NOR REPRODUCED, TRANSFERRED OR INCORPORATED IN ANY OTHER PROJECT IN ANY MANNER WITHOUT THE EXPRESS WRITTEN CONSENT OF SAMTEC, INC.  
 DO NOT SCALE DRAWING  
 SHEET SCALE: 2:1



DESCRIPTION:  
 85 OHM, DIFFERENTIAL, .050 PITCH TERM. ARRAY ASM  
 DWG. NO.  
**SEAMI-XX-XX.X-XX-XX-X-A-K-XR**  
 BY: KNOWLDEN 7/20/2010 SHEET 3 OF 3

## Looking for pricing, stock, or lifecycle information?

Click below to explore more details on WIN SOURCE:

- ⊖ [View SEAMI-20-11.0-L-04-2-A-K-TR on WIN SOURCE](#)
- ⊖ [Samtec Inc. Information](#)

## Optimize Your Supply Chain with WIN SOURCE Solutions

- ✓ Global Sourcing Solution
- ✓ Obsolete Management
- ✓ Cost Control Management
- ✓ Shortage Management
- ✓ Alternative Solution
- ✓ Excess Inventory Management