

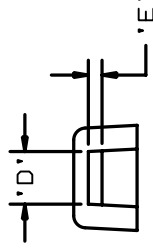
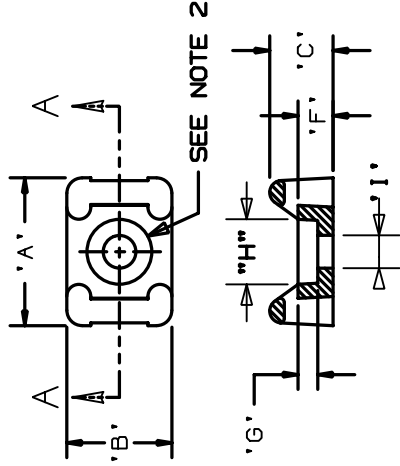


**THE DATASHEET OF  
TM2S8-M100**



THIS COPY IS PROVIDED ON A RESTRICTED BASIS AND IS NOT TO BE USED IN ANY WAY DETRIMENTAL TO THE INTERESTS OF

PANDUIT* PART NO.	MAT'L SUFFIX	RECOMMENDED FASTENER	'A'	'B'	'C'	'D'	'E'	'F'	'G' (REF)	'H' (REF)	'I' (REF)	USE WITH T. CABLE T. CROSS SECT
TM2S6	NONE -0 -30 -69 -120	#8 (M3) SCREW	0.630 [ 16.000 ]	0.425 [ 10.795 ]	0.275 [ 6.985 ]	0.215 [ 5.460 ]	0.060 [ 1.525 ]	0.155 [ 3.937 ]	0.090 [ 2.3 ]	0.286	0.151	MINIATURE INTERMEDIATE STANDARD
TM2S8	NONE -0 -30 -69	#8 (M4) SCREW				±.020 [ .5 ]			0.105 [ 2.7 ]	0.332	0.176	



MAT'L SUFFIX	MATERIAL
NONE	NYLON 6/6
-0	WEATHER RESISTANT NYLON
-30	HEAT STABILIZED NYLON
-69	FLAME RETARDANT NYLON
-120	NYLON 12

- NOTES:  
 \*1. SEE CURRENT PRICE SHEET NUMBER SUFFIX DESIGNAT PACKAGE SIZE.  
 2. HOLE DIMENSIONS SHOULD BE AS SPECIFIED RECOMMENDED P

DIMENSIONS IN BRACKETS  
 CAD FILE NAME: 600239EM\_PB\_T



TM2S - TIE

UNLESS OTHERWISE SPECIFIED, DIMENSIONAL TOLERANCES ARE:  
 (.X) ±0.05 (1.3) (.XXX) ±0.010 (0.2)  
 (.XX) ±0.02 (0.5) ANGLES ±5°



DRAWN BY: AJV MAT'L: SEE TABLE  
 DATE: 12-17-86  
 CHK'D:

SECTION A - A

REV	DATE	BY	CHK	DESCRIPTION	EON	R	CUST	SUP
6	12-19-02	L66		ADDED 120 MATERIAL BACK TO DRAWING	600239EM	6		

## Looking for pricing, stock, or lifecycle information?

Click below to explore more details on WIN SOURCE:

-  [View TM2S8-M100 on WIN SOURCE](#)
-  [Panduit Corp Information](#)

## Optimize Your Supply Chain with WIN SOURCE Solutions

-  Global Sourcing Solution
-  Obsolete Management
-  Cost Control Management
-  Shortage Management
-  Alternative Solution
-  Excess Inventory Management