

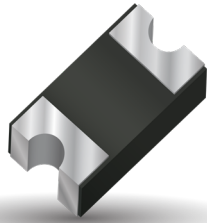


**THE DATASHEET OF
SD1206T040S1R0**



Schottky Barrier Rectifier Diode

Lead-less Chip Form



GENERAL DESCRIPTION

AVX Schottky rectifier diodes offer unique lead-less chip packaging technology which eliminates the lead frame wire bond to give the chip top-bottom symmetry for fewer mounting problems, better heat transfer, and current handling capability (compared to SOD devices).

FEATURES

- Lead-less Chip Form
- Low Vf
- High Current Capability
- Low Power Loss/High Efficiency
- UL 94V-0 Class Package Material
- Halogen Free

APPLICATIONS

- Switch Mode Power Supplies
- High Frequency Rectification
- Portable Battery Powered Devices
- Reverse Bias Protection



MECHANICAL DATA

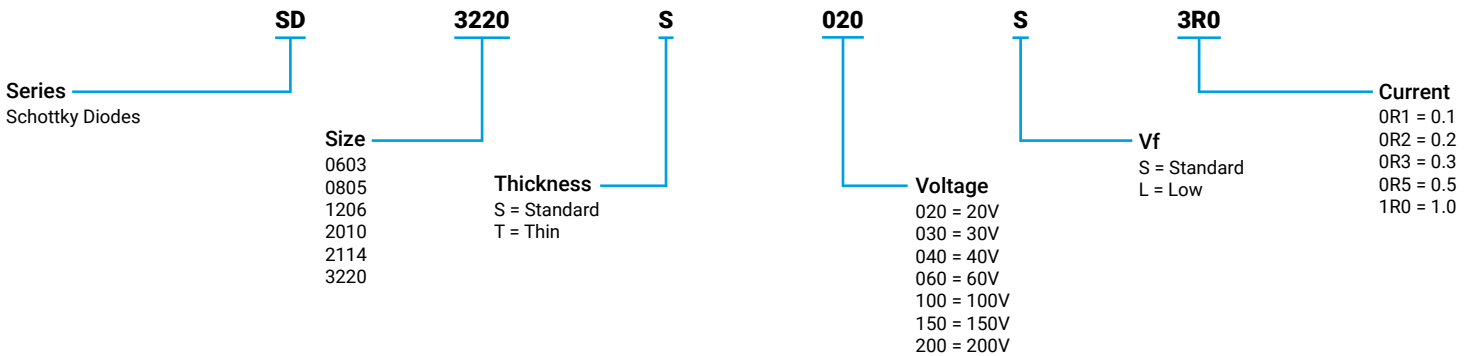
Case: FRP substrate with epoxy underfill

Terminations: 100% Sn plated (Pb-free), solderable per MIL-STD-750, Method 2026.

Operating Temperature: -55°C to 125°C

Storage Temperature: -55°C to 150°C

HOW TO ORDER



DIMENSIONS

| Size (EIA) | | Max Forward Current | | | | | | | | |
|------------|----------------|---------------------|-----|-----|-----|----|----|----|----|----|
| EIAJ | JEDEC | .1A | .2A | .3A | .5A | 1A | 2A | 3A | 5A | 8A |
| 0603 | SOD-523 | | | | | | | | | |
| 0805 | SOD-323 | | | | | | | | | |
| 1206 | SOD-123 | | | | | | | | | |
| 2010 | SMA (D0-214AC) | | | | | | | | | |
| 2114 | SMB (D0-214AA) | | | | | | | | | |
| 3220 | SMC (D0-214AB) | | | | | | | | | |

Schottky Barrier Rectifier Diode

Lead-less Chip Form



ELECTRICAL CHARACTERISTICS

| AVX PN | Size | Max Reverse Voltage | Max Forward Current | Max Peak Forward Surge Current | Reverse Current I_{RRM} | | Forward Voltage Vf | | | Rth JA °C/W | Rth JL °C/W | Cj pF | Marking |
|----------------|------|---------------------|---------------------|--------------------------------|---------------------------|-----|--------------------|------|------|----------------|----------------|----------|---------------|
| | | V_{RRM} | I_F | I_{FSM} | Typ | Max | IF | Min | Max | | | | |
| | | V | A | A | mA | mA | A | V | V | | | | |
| SD3220S020S3R0 | 3220 | 20 | 3 | 100 | 0.025 | 0.5 | 3 | 0.47 | 0.5 | 55 | 17 | 180 | 3220 20S3 |
| SD3220S040S3R0 | 3220 | 40 | 3 | 100 | 0.025 | 0.5 | 3 | 0.47 | 0.5 | 55 | 17 | 180 | 3220 40S3 |
| SD3220S060S3R0 | 3220 | 60 | 3 | 100 | 0.025 | 0.5 | 3 | 0.65 | 0.7 | 55 | 17 | 180 | 3220 60S3 |
| SD3220S100S3R0 | 3220 | 100 | 3 | 100 | 0.025 | 0.5 | 3 | 0.78 | 0.85 | 55 | 17 | 180 | 3220 100S3 |
| SD3220S020S5R0 | 3220 | 20 | 5 | 130 | 0.045 | 0.5 | 5 | 0.52 | 0.55 | 55 | 17 | 180 | 3220 20S5 |
| SD3220S040S5R0 | 3220 | 40 | 5 | 130 | 0.045 | 0.5 | 5 | 0.52 | 0.55 | 55 | 17 | 180 | 3220 40S5 |
| SD3220S060S5R0 | 3220 | 60 | 5 | 130 | 0.045 | 0.5 | 5 | 0.65 | 0.7 | 55 | 17 | 180 | 3220 60S5 |
| SD3220S100S5R0 | 3220 | 100 | 5 | 130 | 0.045 | 0.5 | 5 | 0.79 | 0.85 | 55 | 17 | 180 | 3220 100S5 |
| SD2114S020S3R0 | 2114 | 20 | 3 | 80 | 0.04 | 0.5 | 3 | 0.48 | 0.5 | 55 | 17 | 180 | 2114 20S3 |
| SD2114S040S3R0 | 2114 | 40 | 3 | 80 | 0.04 | 0.5 | 3 | 0.48 | 0.5 | 55 | 17 | 180 | 2114 40S3 |
| SD2114S060S3R0 | 2114 | 60 | 3 | 80 | 0.04 | 0.5 | 3 | 0.65 | 0.7 | 55 | 17 | 180 | 2114 60S3 |
| SD2114S100S3R0 | 2114 | 100 | 3 | 80 | 0.04 | 0.5 | 3 | 0.78 | 0.85 | 55 | 17 | 180 | 2114 100S3 |
| SD2114S020S5R0 | 2114 | 20 | 5 | 105 | 0.045 | 0.5 | 5 | 0.5 | 0.55 | 55 | 17 | 250 | 2114 20S5 |
| SD2114S040S5R0 | 2114 | 40 | 5 | 105 | 0.045 | 0.5 | 5 | 0.5 | 0.55 | 55 | 17 | 250 | 2114 40S5 |
| SD2114S060S5R0 | 2114 | 60 | 5 | 105 | 0.045 | 0.5 | 5 | 0.65 | 0.7 | 55 | 17 | 250 | 2114 60S5 |
| SD2114S100S5R0 | 2114 | 100 | 5 | 105 | 0.045 | 0.5 | 5 | 0.79 | 0.85 | 55 | 17 | 250 | 2114 100S5 |
| SD2114S040S8R0 | 2114 | 40 | 8 | 135 | 0.045 | 0.5 | 8 | 0.53 | 0.55 | 55 | 17 | 450 | 2114 40S8 |

Schottky Barrier Rectifier Diode

Lead-less Chip Form



ELECTRICAL CHARACTERISTICS

| AVX PN | Size | Max Reverse Voltage | Max Forward Current | Max Peak Forward Surge Current | Reverse Current I_{RRM} | | Forward Voltage Vf | | | Rth JA | Rth JL | Cj | Marking |
|----------------|------|---------------------|---------------------|--------------------------------|---------------------------|------|--------------------|------|------|--------|--------|-----|------------------|
| | | V_{RRM} | I_F | I_{FSM} | Typ | Max | IF | Min | Max | | | | |
| | | V | A | A | mA | mA | A | V | V | | | | |
| SD2010S020S1R0 | 2010 | 20 | 1 | 30 | 0.02 | 0.2 | 1 | 0.47 | 0.5 | 88 | 28 | 110 | 10S 20 1 |
| SD2010S040S1R0 | 2010 | 40 | 1 | 30 | 0.02 | 0.2 | 1 | 0.47 | 0.5 | 88 | 28 | 110 | 10S 40 1 |
| SD2010S060S1R0 | 2010 | 60 | 1 | 30 | 0.02 | 0.2 | 1 | 0.6 | 0.7 | 88 | 28 | 110 | 10S 60 1 |
| SD2010S100S1R0 | 2010 | 100 | 1 | 30 | 0.02 | 0.2 | 1 | 0.76 | 0.85 | 88 | 28 | 110 | 10S 100 1 |
| SD2010S150S1R0 | 2010 | 150 | 1 | 30 | 0.001 | 0.05 | 1 | 0.83 | 0.88 | 88 | 28 | 110 | 10S 150 1S |
| SD2010S200S1R0 | 2010 | 200 | 1 | 30 | 0.001 | 0.05 | 1 | 0.86 | 0.9 | 88 | 28 | 110 | 10S 200 1 |
| SD2010S020S2R0 | 2010 | 20 | 2 | 50 | 0.025 | 0.2 | 2 | 0.49 | 0.5 | 75 | 17 | 115 | 10S 20 2 |
| SD2010S040S2R0 | 2010 | 40 | 2 | 50 | 0.025 | 0.2 | 2 | 0.49 | 0.5 | 75 | 17 | 115 | 10S 40 2 |
| SD2010S060S2R0 | 2010 | 60 | 2 | 50 | 0.025 | 0.2 | 2 | 0.6 | 0.7 | 75 | 17 | 115 | 10S 60 2 |
| SD2010S100S2R0 | 2010 | 100 | 2 | 50 | 0.025 | 0.2 | 2 | 0.75 | 0.85 | 75 | 17 | 115 | 10S 100 2 |
| SD2010S150S2R0 | 2010 | 150 | 2 | 50 | 0.001 | 0.2 | 2 | 0.83 | 0.88 | 88 | 28 | 110 | 10S 150 2 |
| SD2010S200S2R0 | 2010 | 200 | 2 | 50 | 0.001 | 0.2 | 2 | 0.86 | 0.9 | 88 | 28 | 110 | 10S 200 2 |
| SD2010S020S3R0 | 2010 | 20 | 3 | 80 | 0.02 | 0.2 | 3 | 0.46 | 0.5 | 86 | 24 | 120 | 10S 20 3 |
| SD2010S040S3R0 | 2010 | 40 | 3 | 80 | 0.02 | 0.2 | 3 | 0.46 | 0.5 | 86 | 24 | 120 | 10S 40 3 |
| SD2010S060S3R0 | 2010 | 60 | 3 | 80 | 0.02 | 0.2 | 3 | 0.58 | 0.7 | 86 | 24 | 120 | 10S 60 3 |
| SD2010S100S3R0 | 2010 | 100 | 3 | 80 | 0.02 | 0.2 | 3 | 0.75 | 0.85 | 86 | 24 | 120 | 10S 100 3 |
| SD2010S150S3R0 | 2010 | 150 | 3 | 80 | 0.001 | 0.05 | 3 | 0.83 | 0.88 | 88 | 28 | 110 | 10S 150 3 |

Schottky Barrier Rectifier Diode

Lead-less Chip Form



ELECTRICAL CHARACTERISTICS

| AVX PN | Size | Max Reverse Voltage | Max Forward Current | Max Peak Forward Surge Current | Reverse Current I_{RRM} | | Forward Voltage Vf | | | Rth JA | Rth JL | Cj | Marking |
|----------------|------|---------------------|---------------------|--------------------------------|---------------------------|------|--------------------|------|------|--------|--------|-----|-----------------|
| | | V_{RRM} | I_F | I_{FSM} | Typ | Max | IF | Min | Max | | | | |
| | | V | A | A | mA | mA | A | V | V | °C/W | °C/W | pF | |
| SD2010S200S3R0 | 2010 | 200 | 3 | 80 | 0.001 | 0.05 | 3 | 0.86 | 0.9 | 88 | 28 | 110 | 10S 200 3 |
| SD2010S030S5R0 | 2010 | 30 | 5 | 80 | - | 0.2 | 3 | 0.42 | 0.44 | 55 | 17 | 210 | 10S 30 5 |
| SD2010S020L1R0 | 2010 | 20 | 1 | 30 | 0.35 | 1 | 1 | 0.37 | 0.38 | 55 | 17 | 115 | 10L 20 1 |
| SD2010S040L1R0 | 2010 | 40 | 1 | 30 | 0.35 | 1 | 1 | 0.37 | 0.38 | 55 | 17 | 115 | 10L 40 1 |
| SD2010S020L2R0 | 2010 | 20 | 2 | 50 | 0.28 | 1 | 2 | 0.39 | 0.4 | 70 | 17 | 115 | 10L 20 2 |
| SD2010S040L2R0 | 2010 | 40 | 2 | 50 | 0.28 | 1 | 2 | 0.39 | 0.4 | 70 | 17 | 115 | 10L 40 2 |
| SD2010S020L3R0 | 2010 | 20 | 3 | 80 | 0.55 | 1 | 3 | 0.39 | 0.42 | 55 | 17 | 120 | 10L 20 3 |
| SD2010S040L3R0 | 2010 | 40 | 3 | 80 | 0.55 | 1 | 3 | 0.39 | 0.42 | 55 | 17 | 120 | 10L 40 3 |
| SD2010S030L3R0 | 2010 | 30 | 3 | 70 | 0.08 | 0.2 | 3 | 0.42 | 0.44 | 55 | 17 | 120 | 10L 30 3 |
| SD1206S020S0R5 | 1206 | 20 | 0.5 | 15 | 0.01 | 0.05 | 0.5 | 0.4 | 0.42 | 88 | 28 | 120 | B2 |
| SD1206S040S0R5 | 1206 | 40 | 0.5 | 15 | 0.01 | 0.05 | 0.5 | 0.45 | 0.48 | 88 | 28 | 120 | B4 |
| SD1206S020S1R0 | 1206 | 20 | 1 | 20 | 0.015 | 0.2 | 1 | 0.46 | 0.5 | 88 | 28 | 110 | A2 |
| SD1206S040S1R0 | 1206 | 40 | 1 | 20 | 0.015 | 0.2 | 1 | 0.46 | 0.5 | 88 | 28 | 110 | A4 |
| SD1206S060S1R0 | 1206 | 60 | 1 | 20 | 0.015 | 0.2 | 1 | 0.62 | 0.7 | 88 | 28 | 110 | A6 |
| SD1206S100S1R0 | 1206 | 100 | 1 | 20 | 0.015 | 0.2 | 1 | 0.76 | 0.85 | 88 | 28 | 110 | A10 |
| SD1206S020S2R0 | 1206 | 20 | 2 | 40 | 0.03 | 0.2 | 2 | 0.47 | 0.5 | 75 | 17 | 115 | L2 |
| SD1206S040S2R0 | 1206 | 40 | 2 | 40 | 0.03 | 0.2 | 2 | 0.47 | 0.5 | 75 | 17 | 115 | L4 |

Schottky Barrier Rectifier Diode

Lead-less Chip Form



ELECTRICAL CHARACTERISTICS

| AVX PN | Size | Max Reverse Voltage | Max Forward Current | Max Peak Forward Surge Current | Reverse Current I_{RRM} | | Forward Voltage Vf | | | Rth JA | Rth JL | Cj | Marking |
|----------------|------|---------------------|---------------------|--------------------------------|---------------------------|------|--------------------|------|------|--------|--------|-----|---------|
| | | V_{RRM} | I_F | I_{FSM} | Typ | Max | IF | Min | Max | | | | |
| | | V | A | A | mA | mA | A | V | V | °C/W | °C/W | pF | |
| SD1206S060S2R0 | 1206 | 60 | 2 | 40 | 0.03 | 0.2 | 2 | 0.58 | 0.7 | 75 | 17 | 115 | L6 |
| SD1206S100S2R0 | 1206 | 100 | 2 | 40 | 0.03 | 0.2 | 2 | 0.75 | 0.85 | 75 | 17 | 115 | L10 |
| SD1206S020L1R0 | 1206 | 20 | 1 | 25 | 0.3 | 1 | 1 | 0.37 | 0.38 | 88 | 28 | 115 | A2L |
| SD1206S040L1R0 | 1206 | 40 | 1 | 25 | 0.3 | 1 | 1 | 0.37 | 0.38 | 88 | 28 | 115 | A4L |
| SD1206S020L2R0 | 1206 | 20 | 2 | 40 | 0.28 | 1 | 2 | 0.39 | 0.4 | 70 | 22 | 115 | L2L |
| SD1206S040L2R0 | 1206 | 40 | 2 | 40 | 0.28 | 1 | 2 | 0.39 | 0.4 | 70 | 22 | 115 | L4L |
| SD1206T020S0R5 | 1206 | 20 | 0.5 | 15 | 0.01 | 0.05 | 0.5 | 0.4 | 0.42 | 88 | 28 | 120 | B2S |
| SD1206T040S0R5 | 1206 | 40 | 0.5 | 15 | 0.01 | 0.05 | 0.5 | 0.45 | 0.48 | 88 | 28 | 120 | B4S |
| SD1206T060S0R5 | 1206 | 60 | 0.5 | 15 | 0.01 | 0.05 | 0.5 | 0.48 | 0.55 | 88 | 28 | 120 | B6S |
| SD1206T020S1R0 | 1206 | 20 | 1 | 20 | 0.015 | 0.2 | 1 | 0.46 | 0.5 | 88 | 28 | 110 | A2S |
| SD1206T040S1R0 | 1206 | 40 | 1 | 20 | 0.015 | 0.2 | 1 | 0.46 | 0.5 | 88 | 28 | 110 | A4S |
| SD1206T060S1R0 | 1206 | 60 | 1 | 20 | 0.015 | 0.2 | 1 | 0.62 | 0.7 | 88 | 28 | 110 | A6S |
| SD1206T100S1R0 | 1206 | 100 | 1 | 20 | 0.015 | 0.2 | 1 | 0.76 | 0.85 | 88 | 28 | 110 | A10S |
| SD1206T020S2R0 | 1206 | 20 | 2 | 40 | 0.03 | 0.2 | 2 | 0.47 | 0.5 | 75 | 17 | 115 | L2S |
| SD1206T040S2R0 | 1206 | 40 | 2 | 40 | 0.03 | 0.2 | 2 | 0.47 | 0.5 | 75 | 17 | 115 | L4S |
| SD1206T060S2R0 | 1206 | 60 | 2 | 40 | 0.03 | 0.2 | 2 | 0.58 | 0.75 | 75 | 17 | 115 | L6S |
| SD1206T100S2R0 | 1206 | 100 | 2 | 40 | 0.03 | 0.2 | 2 | 0.75 | 0.85 | 75 | 17 | 115 | L10S |

Schottky Barrier Rectifier Diode

Lead-less Chip Form



ELECTRICAL CHARACTERISTICS

| AVX PN | Size | Max Reverse Voltage | Max Forward Current | Max Peak Forward Surge Current | Reverse Current I_{RRM} | | Forward Voltage Vf | | | Rth JA °C/W | Rth JL °C/W | Cj pF | Marking |
|----------------|------|---------------------|---------------------|--------------------------------|---------------------------|------|--------------------|------|------|----------------|----------------|----------|----------|
| | | V_{RRM} | I_F | I_{FSM} | Typ | Max | IF | Min | Max | | | | |
| | | V | A | A | mA | mA | A | V | V | | | | |
| SD1206T040S3R0 | 1206 | 40 | 3 | 40 | 0.03 | 0.2 | 3 | 0.53 | 0.55 | 88 | 28 | 110 | K4S |
| SD1206T060S3R0 | 1206 | 60 | 3 | 40 | 0.03 | 0.2 | 3 | 0.75 | 0.8 | 88 | 28 | 110 | K6S |
| SD1206T020L1R0 | 1206 | 20 | 1 | 25 | 0.3 | 1 | 1 | 0.37 | 0.38 | 88 | 28 | 115 | A2 LS |
| SD1206T040L1R0 | 1206 | 40 | 1 | 25 | 0.3 | 1 | 1 | 0.37 | 0.38 | 88 | 28 | 115 | A4 LS |
| SD0805S020S0R1 | 805 | 20 | 0.1 | 2 | 0.004 | 0.03 | 0.1 | 0.38 | 0.45 | 160 | 110 | 18 | F 2 |
| SD0805S040S0R1 | 805 | 40 | 0.1 | 2 | 0.004 | 0.03 | 0.1 | 0.4 | 0.5 | 160 | 110 | 18 | F 4 |
| SD0805S020S0R2 | 805 | 20 | 0.2 | 2 | 0.008 | 0.05 | 0.2 | 0.42 | 0.45 | 160 | 110 | 15 | D 2 |
| SD0805S040S0R2 | 805 | 40 | 0.2 | 2 | 0.008 | 0.05 | 0.2 | 0.45 | 0.5 | 160 | 110 | 15 | D 4 |
| SD0805S020S0R3 | 805 | 20 | 0.3 | 2 | 0.008 | 0.05 | 0.3 | 0.47 | 0.5 | 160 | 110 | 30 | C 2 |
| SD0805S040S0R3 | 805 | 40 | 0.3 | 2 | 0.008 | 0.05 | 0.3 | 0.47 | 0.5 | 160 | 110 | 30 | C 4 |
| SD0805S020S0R5 | 805 | 20 | 0.5 | 5 | 0.015 | 0.1 | 0.5 | 0.4 | 0.44 | 120 | 28 | 28 | B 2 |
| SD0805S030S0R5 | 805 | 30 | 0.5 | 5 | 0.015 | 0.1 | 0.5 | 0.4 | 0.46 | 120 | 28 | 28 | B 3 |
| SD0805S040S0R5 | 805 | 40 | 0.5 | 5 | 0.015 | 0.1 | 0.5 | 0.4 | 0.48 | 120 | 28 | 28 | B 4 |
| SD0805S020S1R0 | 805 | 20 | 1 | 10 | 0.028 | 0.2 | 1 | 0.42 | 0.45 | 120 | 28 | 115 | A 2 |
| SD0805S040S1R0 | 805 | 40 | 1 | 10 | 0.008 | 0.05 | 1 | 0.49 | 0.55 | 88 | 28 | 110 | A 41 |
| SD0805S060S1R0 | 805 | 60 | 1 | 10 | 0.028 | 0.2 | 1 | 0.62 | 0.65 | 120 | 28 | 115 | A 6 |
| SD0805S020L1R0 | 805 | 20 | 1 | 10 | 0.3 | 1 | 1 | 0.37 | 0.38 | 88 | 28 | 115 | A 2L |

Schottky Barrier Rectifier Diode

Lead-less Chip Form



ELECTRICAL CHARACTERISTICS

| AVX PN | Size | Max Reverse Voltage | Max Forward Current | Max Peak Forward Surge Current | Reverse Current I_{RRM} | | Forward Voltage V_f | | | Rth JA °C/W | Rth JL °C/W | Cj pF | Marking |
|----------------|------|---------------------|---------------------|--------------------------------|---------------------------|-------|-----------------------|------|------|----------------|----------------|----------|---------|
| | | V_{RRM} | I_F | I_{FSM} | Typ | Max | IF | Min | Max | | | | |
| | | V | A | A | mA | mA | A | V | V | | | | |
| SD0805S040L1R0 | 805 | 40 | 1 | 10 | 0.3 | 1 | 1 | 0.37 | 0.38 | 88 | 28 | 115 | A 4L |
| SD0603S020S0R1 | 603 | 20 | 0.1 | 2 | 0.008 | 0.05 | 0.1 | 0.38 | 0.4 | 160 | 110 | 30 | 2F |
| SD0603S040S0R1 | 603 | 40 | 0.1 | 2 | 0.008 | 0.05 | 0.1 | 0.38 | 0.4 | 160 | 110 | 30 | 4F |
| SD0603S020S0R2 | 603 | 20 | 0.2 | 2 | 0.008 | 0.05 | 0.2 | 0.43 | 0.45 | 160 | 110 | 35 | 2D |
| SD0603S040S0R2 | 603 | 40 | 0.2 | 2 | 0.0005 | 0.001 | 0.2 | 0.43 | 0.45 | 160 | 110 | 35 | 4D |
| SD0603S020S0R3 | 603 | 20 | 0.3 | 2 | 0.008 | 0.05 | 0.3 | 0.47 | 0.5 | 160 | 110 | 35 | 2C |
| SD0603S040S0R3 | 603 | 40 | 0.3 | 2 | 0.008 | 0.05 | 0.3 | 0.47 | 0.5 | 160 | 110 | 35 | 4C |

Schottky Barrier Rectifier Diode

Lead-less Chip Form

PAD LAYOUT mm (inches)

| | |
|--------------------------------------|--------------------|
| <p>0603</p> | <p>2010</p> |
| <p>0805</p> | <p>2114</p> |
| <p>1206 1206-T</p> | <p>3220</p> |

Schottky Barrier Rectifier Diode

Lead-less Chip Form

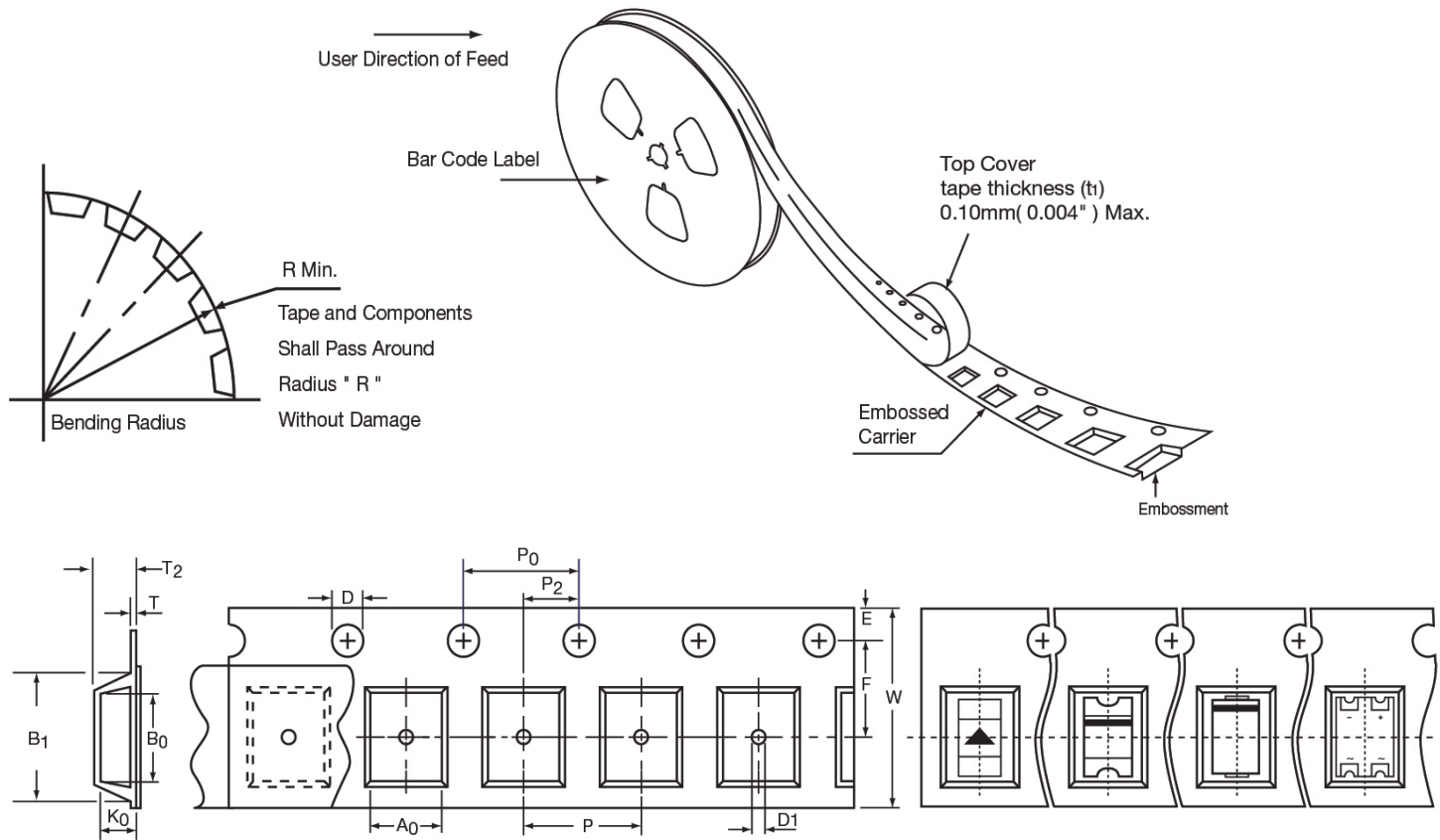
PAD LAYOUT mm (inches)

| | |
|--|--|
| <p>0603</p> <p>SOD-523</p> | <p>2010</p> <p>SMA (DO-214AC)</p> |
| <p>0805</p> <p>SOD-323</p> | <p>2114</p> <p>SMB (DO-214AA)</p> |
| <p>1206</p> <p>SOD-123</p> | <p>3220</p> <p>SMC (DO-214AB)</p> |
| <p>1206-T</p> <p>Equivalent : SOD-123</p> | <p>Polarity: Laser Cathode Band Marking</p> |

Schottky Barrier Rectifier Diode

Lead-less Chip Form

CARRIER TAPE



REEL DIMENSIONS mm inches

| Tape Size | D | E | P ₀ | A ₀ | B ₀ | K ₀ | T max | P ₂ |
|-----------|--------------------------------|-------------------------------|------------------------------|----------------|----------------|----------------|--------|------------------------------|
| 8, 12 mm | 1.50 ± 0.1 (0.059 ± 0.004) | 1.75 ± 0.1 (0.069 ± 0.004) | 4.0 ± 0.1 (0.157 ± 0.004) | See Note 1 | | | 0.4 | 2.0 ± 0.1 (0.079 ± 0.002) |
| 16 mm | 1.55 ± 0.05 (0.061 ± 0.002) | 1.75 ± 0.1 (0.069 ± 0.004) | 4.0 ± 0.1 (0.157 ± 0.004) | | | | -0.016 | |

| Product Size | Tape Size | B1 | D1 | F | P | W | T2 | R Min |
|--------------|-----------|-------------------------|--------------------------------|--------------------------------|--------------------------------|---------------------------------|--------------------------------|--------------|
| 0603 | 8mm | 2.0 max (0.079 max) | 0.80 ± 0.05 (0.031 ± 0.002) | 3.50 ± 0.05 (0.138 ± 0.002) | 4.00 ± 0.10 (0.157 ± 0.004) | 8.00 ± 0.30 (0.315 ± 0.012) | 1.00 ± 0.10 (0.039 ± 0.004) | 25 |
| 0805 | | | | | | | 1.22 ± 0.10 (0.048 ± 0.004) | |
| 1206 | 12mm | 8.2 max 0.323 max) | 1.50 min. (0.059 min.) | 5.50 ± 0.05 (0.217 ± 0.002) | 8.00 ± 0.10 (0.315 ± 0.004) | 12.00 ± 0.30 (0.472 ± 0.012) | 1.75 ± 0.1 (0.069 ± 0.004) | 30 |
| 1206-S | | | | | | | 1.40 ± 0.1 (0.055 ± 0.004) | |
| 2010 | | | | | | | 1.51 ± 0.10 (0.059 ± 0.004) | |
| 2114 | | | | | | | 1.65 ± 0.10 (0.065 ± 0.004) | |
| 3220 | 16mm | 12.1 max (0.476 max) | | 7.50 ± 0.10 (0.295 ± 0.004) | | 16.00 ± 0.30 (0.630 ± 0.012) | 2.50 max (0.098 max) | 40 -1.575 |

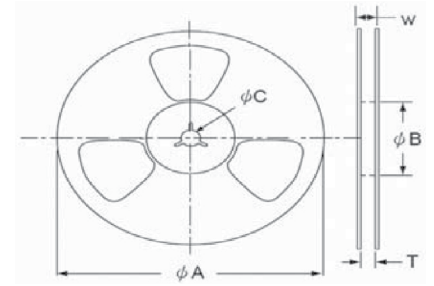
- NOTES:**
- A₀, B₀, and K₀ are determined by component size. The clearance between the components and the cavity must be within 0.05 mm (0.002") Min. to 0.50 mm (0.02") Max. for 8mm tape, and 0.15mm (0.066") Min. to 0.90 mm (0.035") Max. 12 mm tape.
 - All surface mount components are packed in accordance with EIA standard 481-1 and 481-2

Schottky Barrier Rectifier Diode

Lead-less Chip Form

REEL DIMENSIONS mm inches

| Symbol | Tape Size | ϕA | ϕB | ϕC | W | T |
|--------|--------------|--------------------------------------|-----------------------|---------------------------------------|-------------------------|-------------------------|
| 0603 | 8 | 178 ± 2.0 | 60 ± 0.5 | 13.5 ± 0.5 | 12.0 ± 0.5 | 9.0 ± 0.5 |
| 0805 | -0.315 | (7.008 ± 0.079) | (2.362 ± 0.020) | (0.532 ± 0.020) | (0.472 ± 0.020) | (0.354 ± 0.020) |
| 1206 | 12 -0.472 | 178 ± 2.0 (7.008 ± 0.079) | 50 min (1.969 min) | 13.0 ± 0.5 (0.512 ± 0.020) | 18.7 max (0.736 max) | 14.4 max (0.567 max) |
| 1206-T | | | | | | |
| 2010 | | | | | | |
| 2114 | 16 -0.63 | 330 ± 2.0 (12.99 ± 0.079) | | | 22.7 max (0.893 max) | 18.4 max (0.724 max) |
| 3220 | | | | | | |



QUANTITIES

| Size | Reel Size | Qty/Reel |
|--------|-----------|----------|
| 0603 | 7" | 3,000 |
| 0805 | | |
| 1206 | 7" | 3,000 |
| 1206-T | | |
| 2010 | | |
| 2114 | 13" | 5,000 |
| 3220 | 13" | 3,000 |

Looking for pricing, stock, or lifecycle information?

Click below to explore more details on WIN SOURCE:

 [View SD1206T040S1R0 on WIN SOURCE](#)

 [AVX Corp/Kyocera Corp](#) Information

Optimize Your Supply Chain with WIN SOURCE Solutions

-  Global Sourcing Solution
-  Obsolete Management
-  Cost Control Management
-  Shortage Management
-  Alternative Solution
-  Excess Inventory Management