

RUGGED TIGER EYE™ SYSTEMS

(1.27 mm) .050" PITCH

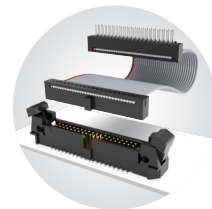


FEATURES & BENEFITS

- Screw down, locking clip, friction latching and weld tab ruggedizing options
- Shrouded, polarized and keyed
- Surface mount or through-hole tails
- High-density, four row design (FOLC/MOLC Series)
- Discrete wire assemblies available in single or double row, 28 and 30 AWG PVC or *Teflon™ Fluoropolymer (See pages 238-239). Contact asp@samtec.com for custom solutions.
- Cable components (ISDF/CC03) and tooling available: samtec.com/tooling
- Severe Environment Testing qualified (SFM/TFM); aligns with MIL-DTL-55302. Visit samtec.com/set

*Teflon™ is a trademark of The Chemours Company FC, LLC used under license by Samtec.

**TIGER™
EYE**
CONTACT



IDC cable assemblies with rugged strain relief (FFSD/FFMD, FFTP/FMTP)



Locking for increased unmating force (SFML/TFML)

KEY SPECIFICATIONS

SERIES	STACK HEIGHTS	INSULATOR MATERIAL	CONTACT MATERIAL	PLATING	OPERATING TEMP RANGE	CURRENT RATING	VOLTAGE RATING	MAX. CYCLES	LEAD-FREE SOLDERABLE
SFM/TFM	6 to 12 mm	Black LCP	BeCu (SFM) Phosphor Bronze (TFM)	Au or Sn over 50 μ" (1.27 μm) Ni	-55 °C to +125 °C	3.7A per pin (2 pins powered)	275 VAC	10,000 with 30 μ" (0.76 μm) Au	Yes
SFC/TFC	6 to 12 mm	Black LCP	Phosphor Bronze	Au or Sn over 50 μ" (1.27 μm) Ni	-55 °C to +125 °C	3.1 A per pin (2 pins powered)	350 VAC	(Call Samtec for E.L.P.™ plating option)	Yes

(1.27 mm) .050" PITCH • COST-EFFECTIVE HEADER/SOCKET

SFC	1	NO. PINS PER ROW	LEAD STYLE	PLATING OPTION	D	OPTIONS
-----	---	------------------	------------	----------------	---	---------

04, 05, 10, 15,
20, 25, 30, 35,
40, 45, 50
(Standard sizes)

-T1
= Through-hole
Tiger Eye™ LITE

-T2
= Surface Mount
Tiger Eye™ LITE

-F
= Gold flash on contact,
Matte Tin on tail

-L
= 10 μ" (0.25 μm)
Gold on contact,
Matte Tin on tail

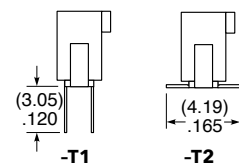
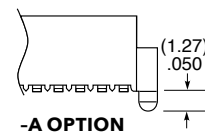
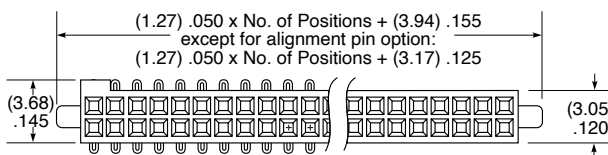
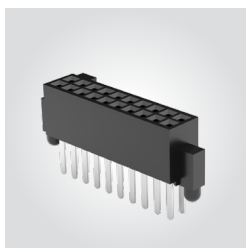
-A
= Alignment Pin

-K
= (4.00 mm) .157" DIA Polyimide film
Pick & Place Pad

-TR
= Tape & Reel
(-T2 only)

-FR
= Full Reel Tape & Reel
(must order max. quantity per reel;
contact Samtec for quantity breaks)
(-T2 only)

SFC
Board Mates:
TFC
Cable Mates:
TFSD, TFSDT



View complete specifications at: samtec.com?SFC

TFC	1	NO. PINS PER ROW	LEAD STYLE	PLATING OPTION	D	OPTIONS
-----	---	------------------	------------	----------------	---	---------

03, 04, 06, 08
(Lead Style -01 & -02 only)

05, 07, 10, 15, 20, 25,
30, 35, 40, 45, 50
(Standard sizes)

-X1
= Through-hole

-X2
= Surface Mount

-F
= Gold flash on
post, Matte Tin
on tail

-L
= 15 μ" (0.38 μm)
Gold on post,
Matte Tin on tail

-RA
= Right-angle
(-01 only)

-A
= Alignment Pin

-LC
= Locking Clip
(Manual Placement required)
(not available with -RA)

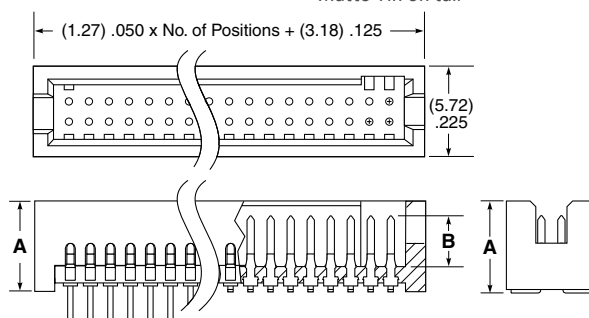
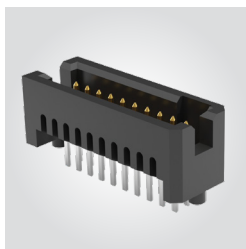
-K
= (6.75 mm) .266" DIA
Polyimide film Pick & Place Pad
(not available with -RA)

-P
= Plastic Pick & Place Pad
(5 positions min.)
(not available with -RA)

-TR
= Tape & Reel
(-X2 only)
(not available with -RA)

-FR
= Full Reel Tape & Reel
(must order max. quantity per reel;
contact Samtec for quantity breaks)
(-X2 only)
(not available with -RA)

TFC
Board Mates:
SFC
Cable Mates:
SFS, SFSDT




SMT LEAD STYLE	A	B	TH LEAD STYLE	A	B
-02	(5.72) .225	(3.38) .133	-01	(5.59) .220	(3.38) .133
-12	(7.49) .295		-11	(7.37) .290	
-22	(9.27) .365	(3.30) .130	-21	(9.14) .360	(3.30) .130
-32	(11.18) .440		-31	(11.05) .435	

Note:
Some lengths, styles and
options are non-standard,
non-returnable.

View complete specifications at: samtec.com?TFC

Looking for pricing, stock, or lifecycle information?

Click below to explore more details on WIN SOURCE:

 [View SFC-117-T2-L-D-A on WIN SOURCE](#)

 [Samtec Inc. Information](#)

Optimize Your Supply Chain with WIN SOURCE Solutions

-  Global Sourcing Solution
-  Obsolete Management
-  Cost Control Management
-  Shortage Management
-  Alternative Solution
-  Excess Inventory Management