



THE DATASHEET OF SBC1000-1

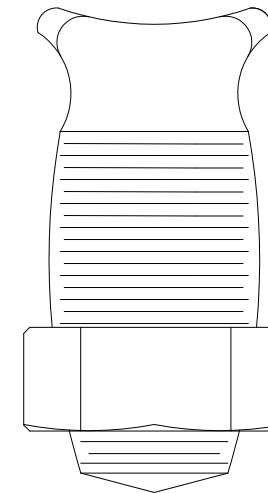
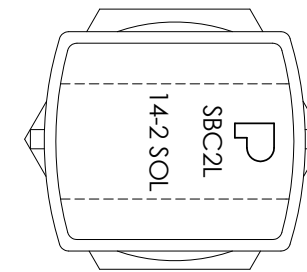
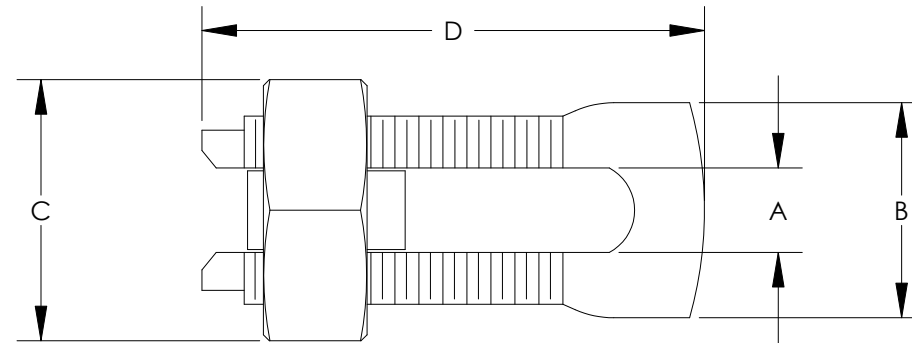


THIS COPY IS PROVIDED ON A RESTRICTED BASIS AND IS NOT TO BE USED IN ANY WAY DETRIMENTAL TO THE INTERESTS OF PANDUIT CORP.

NOTES:

1. HIGH STRENGTH ELECTROLYTIC COPPER HIGHLY RESISTANT TO CORROSION AND SEASON CRACKING.
2. FOR COPPER AND COPPERWELD WIRES ONLY.
3. *CONNECTOR CAN BE USED WITH 3 WIRES, BUT IS NOT CSA APPROVED WITH 3 WIRES.
4. **THE CONDUCTOR SIZES SHOWN ARE FOR EQUAL RUN AND TAP COMBINATIONS FOR BOTH SOLID AND STRANDED UNLESS OTHERWISE LISTED.

CATALOG NUMBER	COPPER CONDUCTOR		MAX CONDUCTOR	COPPER WELD		WIRE DIAMETER RANGE (IN INCHES)	APPROXIMATE DIMENSIONS (IN INCHES)				REQUIRED TORQUE (IN. - LB.)
	RANGE OF EQUAL RUN & TAP			MIN TAP WITH ONE MAX RUN	STR.		TYPE A	A	B	C	
	MIN.	MAX									
*SBC8L-C	16 STR	8 STR	16 STR	----	----	.08-.15	0.15	0.38	0.5	0.84	80
*SBC2L-C	14 STR	2 STR	14 STR	3 NO. 7	3A	.16-.29	0.33	0.63	0.81	1.55	275
SBC750-1	350 kcmil	750 kcmil	8 SOL	19 NO. 5	----	.68-1.00	1.03	1.94	2.13	3.75	1000
SBC1000-1	500 kcmil	1000 kcmil	8 SOL	----	----	.82-1.15	1.22	2.25	2.50	4.00	1100



C41188_07

							PANDUIT CORP. TINLEY PARK, ILLINOIS			
							SBC SERIES - COPPER SPLIT BOLT CONNECTOR CUSTOMER DRAWING			
							UNLESS OTHERWISE SPECIFIED DIMENSIONAL TOLERANCES ARE: (.X) ± (.XXX) ± (.XX) ± ANGLES ±			
							UNLESS OTHERWISE SPECIFIED, ALL DIMENSIONS ARE GIVEN IN INCHES, THIRD ANGLE PROJECTION			
07	2/11	JHNU	RWK	REV'D RANGE OF EQUAL RUN & TAP FOR SBC750-1: 350 kcmil MIN. WAS 8 SOL MIN. REV'D RANGE OF EQUAL RUN & TAP FOR SBC1000-1: 500 kcmil MIN. WAS 8 SOL MIN.	N10850BN-C41188	FLD	FLD	DRAWN BY EJD	MAT'L: SEE NOTE 1 ABOVE	SCALE NONE
REV	DATE	BY	CHK	DESCRIPTION	ECN	-R	SUP	DATE		DRAWING NO / CAD FILE C41188
								CHK'D		DWG B SIZE

Looking for pricing, stock, or lifecycle information?

Click below to explore more details on WIN SOURCE:

 [View SBC1000-1 on WIN SOURCE](#)

 [Panduit Corp](#) Information

Optimize Your Supply Chain with WIN SOURCE Solutions

-  Global Sourcing Solution
-  Obsolete Management
-  Cost Control Management
-  Shortage Management
-  Alternative Solution
-  Excess Inventory Management