

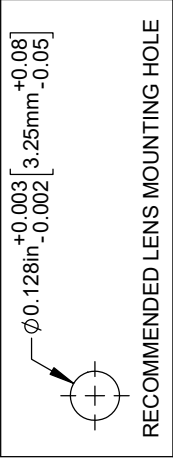
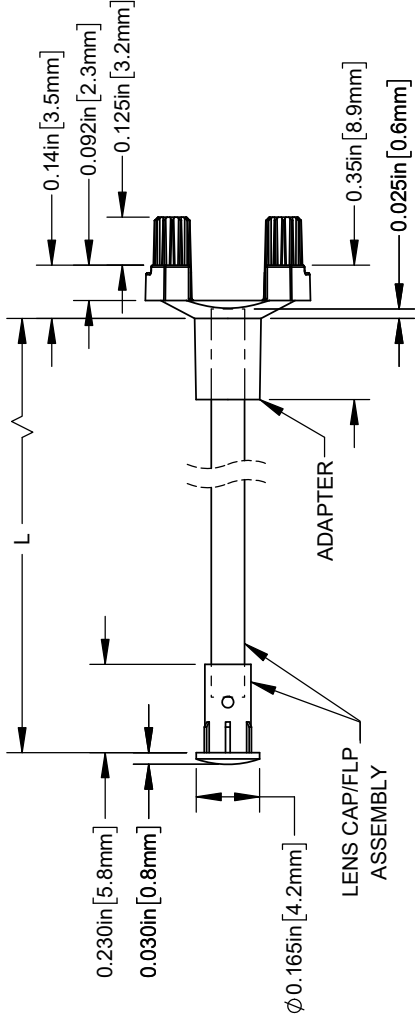


# THE DATASHEET OF SMFLP12.0



**NOTES:**

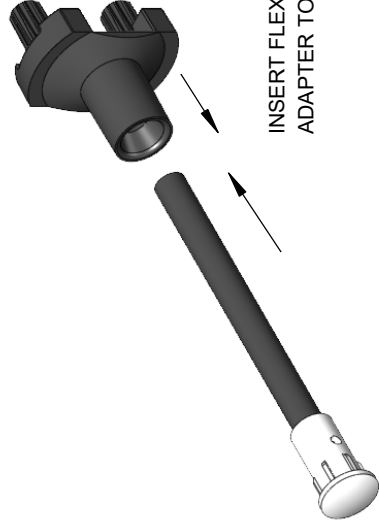
1. ALLOWABLE FLEXIBLE LIGHT PIPE CUT LENGTH AVAILABLE IN INCREMENTS OF 0.05".
2. MINIMUM BEND RADIUS OF FLEXIBLE LIGHT PIPE: 0.87" [22mm].
3. COMPONENTS SHIPPED NON-ASSEMBLED.
4. MINIMUM 0.210" FIBER INSERTION INTO SMFLP.



RECOMMENDED LENS MOUNTING HOLE

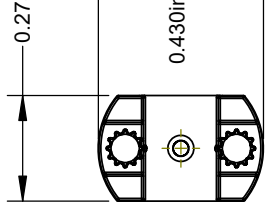
TABLE 1 - LENGTH	
LENGTH (L)*	TOLERANCE
1.00" - 16.00"	$\pm 0.05$ "
16.1" - 40.00"	$\pm 0.15$ "
40.1" - 80.00"	$\pm 0.30$ "
80.1" - 3,940.00"	$\pm 0.5\%$

\*AVAILABLE IN 0.1" INCREMENTS



INSERT FLEXIBLE LIGHT PIPE INTO ADAPTER TO COMPLETE ASSEMBLY

REV.	DESCR
D	Added Shipping Note
E	Updated FLPC Hidden View
F	Updated Fiber To FLPS In
G	Updated Notes
H	ECO-1241: Updated Record



0.15  
2X  $\phi 0.100\text{in}$   $+0.000$   $-0.005$  [2.54]

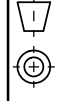
LED MOUNTING

RECOMMENDED  
& MOUNTING

**CUSTOMER**

STANDARD TOLERANCE (UNLESS OTHERWISE SPECIFIED)


DECIMALS	ANGULAR
X $\pm .1$	X° $\pm 1^\circ$
.XX $\pm .02$	
.XXX $\pm .010$	



DESIGNED:	DATE:
D. GREEN	4/17/2006
REVISED:	DATE:
K. BARON	4/15/2022
CHECKED:	DATE:
A. VALDEZ	4/15/2022

## Looking for pricing, stock, or lifecycle information?

Click below to explore more details on WIN SOURCE:

 [View SMFLP12.0 on WIN SOURCE](#)

 [Bivar Inc. Information](#)

## Optimize Your Supply Chain with WIN SOURCE Solutions

-  Global Sourcing Solution
-  Obsolete Management
-  Cost Control Management
-  Shortage Management
-  Alternative Solution
-  Excess Inventory Management