



**THE DATASHEET OF
SLM3005HD5V**



ITEM	QTY	PART NUMBER	PART DESCRIPTION
1	1	SLM-XXX	Molded Self-Retaining LED Mount
2	1	5XX-F	T1 3/4 (5mm) Flanged LED, See Page 2 & 3

REV.	DESCRIPTION
B	Updated Uncut Lead
C	Updated Uncut Lead
D	Updated P/N's on Pa
E	Updated LED Protirus
F	Added Low Current &



PART NO.	SH (Ref.)	H
SLM-140	.140 (3.6mm)	.285 (7.1mm)
SLM-150	.150 (3.8mm)	.295 (7.2mm)
SLM-160	.160 (4.1mm)	.305 (7.7mm)
SLM-170	.170 (4.3mm)	.315 (8.0mm)
SLM-180	.180 (4.6mm)	.325 (8.3mm)
SLM-190	.190 (4.8mm)	.335 (8.5mm)
SLM-200	.200 (5.1mm)	.345 (8.8mm)
SLM-210	.210 (5.3mm)	.355 (9.0mm)
SLM-220	.220 (5.6mm)	.365 (9.3mm)
SLM-230	.230 (5.8mm)	.375 (9.5mm)
SLM-240	.240 (6.1mm)	.385 (9.8mm)
SLM-250	.250 (6.4mm)	.395 (10.0mm)
SLM-260	.260 (6.6mm)	.405 (10.3mm)
SLM-270	.270 (6.9mm)	.415 (10.5mm)

PART NO.	SH (Ref.)	H
SLM-280	.280 (7.1mm)	.425 (10.8mm)
SLM-290	.290 (7.4mm)	.435 (11.0mm)
SLM-300	.300 (7.6mm)	.445 (11.3mm)
SLM-310	.310 (7.9mm)	.455 (11.6mm)
SLM-320	.320 (8.1mm)	.465 (11.8mm)
SLM-330	.330 (8.4mm)	.475 (12.1mm)
SLM-340	.340 (8.6mm)	.485 (12.3mm)
SLM-350	.350 (8.9mm)	.495 (12.6mm)
SLM-360	.360 (9.1mm)	.505 (12.8mm)
SLM-370	.370 (9.4mm)	.515 (13.1mm)
SLM-380	.380 (9.7mm)	.525 (13.3mm)
SLM-390	.390 (9.9mm)	.535 (13.6mm)
SLM-400	.400 (10.2mm)	.545 (13.8mm)
SLM-410	.410 (10.4mm)	.555 (14.1mm)

PART NO.	SH (Ref.)	H
SLM-420	.420 (10.7mm)	.565 (14.3mm)
SLM-430	.430 (10.9mm)	.575 (14.6mm)
SLM-440	.440 (11.2mm)	.585 (14.9mm)
SLM-450	.450 (11.4mm)	.595 (15.1mm)
SLM-470	.470 (11.9mm)	.615 (15.6mm)
SLM-490	.490 (12.4mm)	.635 (16.1mm)
SLM-510	.510 (13.0mm)	.655 (16.6mm)
SLM-530	.530 (13.5mm)	.675 (17.1mm)
SLM-550	.550 (13.8mm)	.695 (17.5mm)
SLM-570	.570 (14.5mm)	.715 (18.2mm)
SLM-590	.590 (15.0mm)	.735 (18.6mm)
SLM-610	.610 (15.5mm)	.755 (19.2mm)
SLM-630	.630 (16.0mm)	.775 (19.7mm)
SLM-650	.650 (16.5mm)	.795 (20.2mm)

ABSOLUTE MAXIMUM RATINGS (Ta = 25°C)

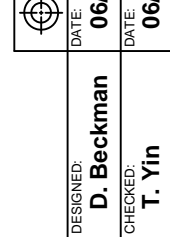
REVERSE VOLTAGE _____ 5V
 REVERSE CURRENT (VR=5V) _____ 100µA
 OPERATING TEMPERATURE RANGE _____ -25°C ~ 85°C
 STORAGE TEMPERATURE _____ -30°C ~ 100°C
 LEAD SOLDERING TEMPERATURE (1/16" FROM BODY) _____ 260°C for 5 Seconds

STANDARD TOLERANCES (UNLESS OTHERWISE SPECIFIED)	
ANGULAR	X°
DECIMALS	.X ±.1 .XX ±.02 .XXX ±.010
DESIGNED BY:	D. Beckman
CHECKED BY:	T. Yin
DATE:	06/11

Assy Part No.	Chip			Lens Appearance	Electro-Optical Data		
	Material	Peak Wave Length λ_p (nm)	Emitted Color		Vf (V)		IV (mcc)
					TYP	MAX	
STANDARD							
					Data @ 20mA		
SLMXXX5BWC	GaN/SiC	430	BLUE	WATER CLEAR	4.0	4.5	30
SLMXXX5BWD	GaN/SiC	430	BLUE	DIFFUSED	4.0	4.5	15
SLMXXX5BWT	GaN/SiC	430	BLUE	TINTED	4.0	4.5	30
SLMXXX5PGC	GaP/GaP	555	PURE GREEN	WATER CLEAR	2.2	2.8	10
SLMXXX5PGD	GaP/GaP	555	PURE GREEN	DIFFUSED	2.2	2.8	10
SLMXXX5PGT	GaP/GaP	555	PURE GREEN	TINTED	2.2	2.8	10
SLMXXX5GC	GaP/GaP	568	GREEN	WATER CLEAR	2.1	2.8	40
SLMXXX5GD	GaP/GaP	568	GREEN	DIFFUSED	2.1	2.8	25
SLMXXX5GT	GaP/GaP	568	GREEN	TINTED	2.1	2.8	40
SLMXXX5YC	GaAsP/GaP	590	YELLOW	WATER CLEAR	2.0	2.8	40
SLMXXX5YD	GaAsP/GaP	590	YELLOW	DIFFUSED	2.0	2.8	25
SLMXXX5YT	GaAsP/GaP	590	YELLOW	TINTED	2.0	2.8	40
SLMXXX5HC	GaAsP/GaP	625	HE RED	WATER CLEAR	2.0	2.8	50
SLMXXX5HD	GaAsP/GaP	625	HE RED	DIFFUSED	2.0	2.8	40
SLMXXX5HT	GaAsP/GaP	625	HE RED	TINTED	2.0	2.8	50
SLMXXX5RC	GaP/GaP	700	RED	WATER CLEAR	2.1	2.8	2
SLMXXX5RD	GaP/GaP	700	RED	DIFFUSED	2.1	2.8	1.5
SLMXXX5RT	GaP/GaP	700	RED	TINTED	2.1	2.8	2

STANDARD TOLERANCES
 (UNLESS OTHERWISE SPECIFIED)
 ±10% ALL VALUES

DESIGNED: **D. Beckman** DATE: **06/1**
 CHECKED: **T. Yin** DATE: **06/1**



Assy Part No.	Chip			Lens Appearance	Electro-Optical Data			
	Material	Peak Wave Length λ_p (nm)	Emitted Color		TYP	MAX	TYFF	Iv (mcc)
LOW CURRENT								
SLMXXX5BWDL	GaN/SiC	430	BLUE	DIFFUSED	3.8	4.2	4	
SLMXXX5GDL	GaP/GaP	568	GREEN	DIFFUSED	2.1	2.6	4	
SLMXXX5YDL	GaAsP/GaP	590	YELLOW	DIFFUSED	2.0	2.6	4	
SLMXXX5ADL	GaAsP/GaP	605	AMBER	DIFFUSED	2.0	2.6	4	
SLMXXX5HDL	GaAsP/GaP	625	HE RED	DIFFUSED	2.0	2.6	5	
SLMXXX5SRDL	GaAlAs/GaAs	645	RED	DIFFUSED	1.7	2.3	6	

Assy Part No.	Chip			Lens Appearance	Electro-Optical Data			
	Material	Peak Wave Length λ_p (nm)	Emitted Color		TYP	MAX	TYFF	Iv (mcc)
5 VOLT								
SLMXXX5BWD5V	GaN/SiC	430	BLUE	DIFFUSED	-	5.0	15	
SLMXXX5GD5V	GaP/GaP	568	GREEN	DIFFUSED	-	5.0	25	
SLMXXX5YD5V	GaAsP/GaP	590	YELLOW	DIFFUSED	-	5.0	25	
SLMXXX5AD5V	GaAsP/GaP	605	AMBER	DIFFUSED	-	5.0	25	
SLMXXX5HD5V	GaAsP/GaP	625	HE RED	DIFFUSED	-	5.0	30	
SLMXXX5RD5V	GaP/GaP	700	RED	DIFFUSED	-	5.0	1.5	

STANDARD TOLERANCE
(UNLESS OTHERWISE SPECIFIED)
±10% ALL VALUES



DESIGNED: **D. Beckman** DATE: **06/1**
CHECKED: **T. Yin** DATE: **06/1**

Looking for pricing, stock, or lifecycle information?

Click below to explore more details on WIN SOURCE:

 [View SLM3005HD5V on WIN SOURCE](#)

 [Bivar Inc. Information](#)

Optimize Your Supply Chain with WIN SOURCE Solutions

-  Global Sourcing Solution
-  Obsolete Management
-  Cost Control Management
-  Shortage Management
-  Alternative Solution
-  Excess Inventory Management