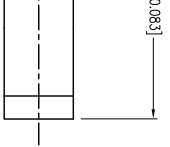


PART NUMBER

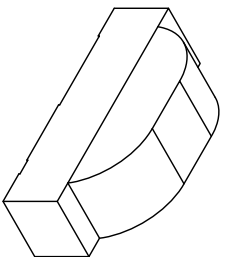
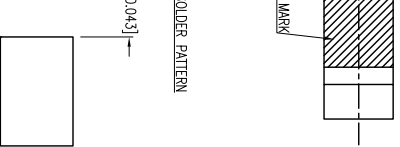
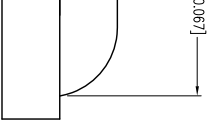
SML-LXR2106SYC-TR

REV.

-



1



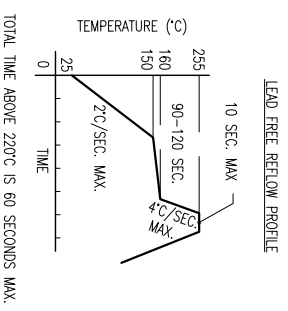
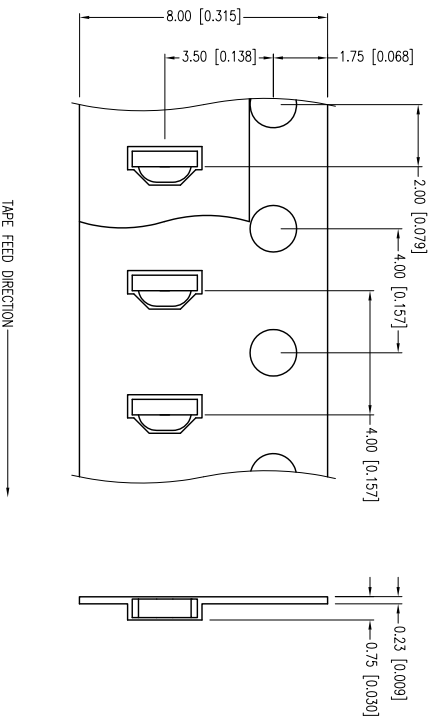
ELECTRO-OPTICAL CHARACTERISTICS $T_a=25^{\circ}\text{C}$			
PARAMETER	MIN	TYP	MAX
PEAK WAVELENGTH		590	
FORWARD VOLTAGE		2.0	2.5
REVERSE VOLTAGE	5.0		
AXIAL INTENSITY		150	
VIEWING ANGLE		120	
EMITTED COLOR:		SUPER YELLOW	
LENS FINISH:		WATER CLEAR	

LIMITS OF SAFE OPERATION AT 25°C

PARAMETER	MAX	UNITS
PEAK FORWARD CURRENT*	175	mA
STEADY CURRENT	30	mA
POWER DISSIPATION	75	mW
DERATE FROM 25°C	-1.2	mW/°C
OPERATING TEMP.	-40 TO +85	°C
STORAGE TEMP.	-40 TO +85	°C

* I<I₀U.S

CAUTION: MOISTURE SENSITIVE DEVICE
PER JEDEC LEVEL 3 STANDARDS



TOTAL TIME ABOVE 220°C IS 60 SECONDS MAX.

TY AFE
SML L 60188-4900
800.278.5666
3.15.2152
LUXEY.COM
/TW PHOTONICS GROUP

X±1 (+0.039), X.X=±0.5 (+0.020), X.XX=±0.25 (+0.010), X.XXX=±0.127 (+0.005), LEAD SIZE=±0.05 (+0.002), LEAD LENGTH=±0.75 (+0.030), MIN= -0.000 DECEMAL PRECISION MAX.= +0.000 DECEMAL PRECISION
0.6mm x 2.1mm SMT LED RIGHT ANGLE, 590nm SUPER YELLOW LED, WATER CLEAR LENS.

THE SPECIFICATIONS MAY CHANGE AT ANY TIME WITHOUT NOTICE DUE TO NEW MATERIALS OR PRODUCT IMPROVEMENT.

CONFIDENTIAL INFORMATION
THE INFORMATION CONTAINED IN THIS DOCUMENT IS THE PROPERTY OF LUXEY INC. EXCEPT AS SPECIFICALLY AUTHORIZED IN WRITING BY LUXEY INC., THE HOLDER OF THIS DOCUMENT SHALL KEEP ALL INFORMATION CONTAINED HEREIN CONFIDENTIAL AND SHALL PROTECT SAME IN WHOLE OR IN PART FROM DISCLOSURE AND DISSEMINATION TO ALL THIRD PARTIES.

UNCONTROLLED DOCUMENT

DATE:	08.19.13	DRAWN BY:	MA
PAGE:	1 OF 1	CHKD BY:	KF
SCALE:	NTS	APRVD BY:	KF
UNIT:	mm [INCH]		



Looking for pricing, stock, or lifecycle information?

Click below to explore more details on WIN SOURCE:

 [View SML-LXR2106SYC-TR on WIN SOURCE](#)

 [Lumex Opto/Components Inc. Information](#)

Optimize Your Supply Chain with WIN SOURCE Solutions

-  Global Sourcing Solution
-  Obsolete Management
-  Cost Control Management
-  Shortage Management
-  Alternative Solution
-  Excess Inventory Management