



# THE DATASHEET OF D8P05



**8A, 50V, 0.300 Ohm, P-Channel Power MOSFETs**

These products are P-Channel power MOSFETs manufactured using the MegaFET process. This process, which uses feature sizes approaching those of LSI circuits, gives optimum utilization of silicon, resulting in outstanding performance. They were designed for use in applications such as switching regulators, switching converters, motor drivers, and relay drivers. These transistors can be operated directly from integrated circuits.

Formerly developmental type TA09832.

**Ordering Information**

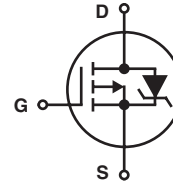
| PART NUMBER | PACKAGE  | BRAND   |
|-------------|----------|---------|
| RFD8P05     | TO-251AA | D8P05   |
| RFD8P05SM   | TO-252AA | D8P05   |
| RFP8P05     | TO-220AB | RFP8P05 |

NOTE: When ordering, use the entire part number. Add the suffix 9A to obtain the TO-252AA variant in tape and reel, i.e., RFD8P05SM9A.

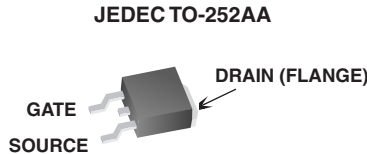
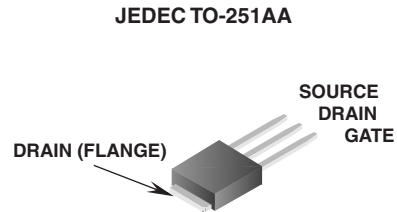
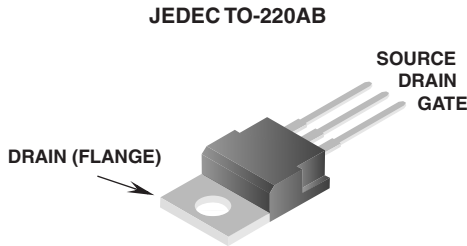
**Features**

- 8A, 50V
- $r_{DS(ON)} = 0.300\Omega$
- UIS SOA Rating Curve
- SOA is Power Dissipation Limited
- Nanosecond Switching Speeds
- Linear Transfer Characteristics
- High Input Impedance
- Related Literature
  - TB334 "Guidelines for Soldering Surface Mount Components to PC Boards"

**Symbol**



**Packaging**



# RFD8P05, RFD8P05SM, RFP8P05

## Absolute Maximum Ratings $T_C = 25^{\circ}\text{C}$ Unless Otherwise Specified

|  | RFD8P05,<br>RFD8P05SM, RFP8P05 | UNITS                 |
|--|--------------------------------|-----------------------|
| Drain to Source Voltage (Note 1) . . . . .                               | -50                            | V                     |
| Drain to Gate Voltage ( $R_{GS} = 20\text{K}\Omega$ ) (Note 1) . . . . . | -50                            | V                     |
| Continuous Drain Current . . . . .                                       | -8                             | A                     |
| Pulsed Drain Current (Note 3) . . . . .                                  | -20                            | A                     |
| Gate to Source Voltage . . . . .   | $\pm 20$                       | V                     |
| Maximum Power Dissipation . . . . .                                      | 48                             | W                     |
| Dissipation Derating Factor . . . . .                                    | 0.27                           | W/ $^{\circ}\text{C}$ |
| Single Pulse Avalanche Energy Rating . . . . .                           | See Figure 6                   |                       |
| Operating and Storage Temperature . . . . .                              | -55 to 175                     | $^{\circ}\text{C}$    |
| Maximum Temperature for Soldering  |                                |                       |
| Leads at 0.063in (1.6mm) from Case for 10s. . . . .                      | 300                            | $^{\circ}\text{C}$    |
| Package Body for 10s, See Techbrief 334 . . . . .                        | 260                            | $^{\circ}\text{C}$    |

CAUTION: Stresses above those listed in "Absolute Maximum Ratings" may cause permanent damage to the device. This is a stress only rating and operation of the device at these or any other conditions above those indicated in the operational sections of this specification is not implied.

NOTE:

1.  $T_J = 25^{\circ}\text{C}$  to  $150^{\circ}\text{C}$ .

## Electrical Specifications $T_C = 25^{\circ}\text{C}$ Unless Otherwise Specified

| PARAMETER                              | SYMBOL            | TEST CONDITIONS   | MIN | TYP | MAX       | UNITS                       |
|--|-------------------|---|-----|-----|-----------|-----------------------------|
| Drain to Source Breakdown Voltage      | $BV_{DSS}$        | $I_D = 250\mu\text{A}$ , $V_{GS} = 0\text{V}$ (Figure 9)  | -50 | -   | -         | V                           |
| Gate Threshold Voltage                 | $V_{GS(TH)}$      | $V_{GS} = V_{DS}$ , $I_D = 250\mu\text{A}$ (Figure 8)   | -2  | -   | -4        | V                           |
| Zero Gate Voltage Drain Current        | $I_{DSS}$         | $V_{DS} = \text{Rated } BV_{DSS}$ , $V_{GS} = 0\text{V}$  | -   | -   | 1         | $\mu\text{A}$               |
|  |                   | $V_{DS} = 0.8 \times \text{Rated } BV_{DSS}$ , $T_J = 150^{\circ}\text{C}$  | -   | -   | 25        | $\mu\text{A}$               |
| Gate to Source Leakage Current         | $I_{GSS}$         | $V_{GS} = \pm 20\text{V}$   | -   | -   | $\pm 100$ | nA                          |
| Drain to Source On Resistance (Note 2) | $r_{DS(ON)}$      | $I_D = 8\text{A}$ , $V_{GS} = -10\text{V}$ (Figure 7)   | -   | -   | 0.300     | $\Omega$                    |
| Turn-On Time                           | $t_{ON}$          | $V_{DD} = -25\text{V}$ , $I_D \approx 4\text{A}$ , $R_G = 9.1\Omega$ , $R_L = 6.25\Omega$ ,<br>$V_{GS} = -10\text{V}$ | -   | -   | 60        | ns                          |
| Turn-On Delay Time                     | $t_{d(ON)}$       |   | -   | 16  | -         | ns                          |
| Rise Time                              | $t_r$             |   | -   | 30  | -         | ns                          |
| Turn-Off Delay Time                    | $t_{d(OFF)}$      |   | -   | 42  | -         | ns                          |
| Fall Time                              | $t_f$             |   | -   | 20  | -         | ns                          |
| Turn-Off Time                          | $t_{OFF}$         |   | -   | -   | 100       | ns                          |
| Total Gate Charge                      | $Q_g(\text{TOT})$ | $V_{GS} = 0$ to $-20\text{V}$   | -   | -   | 80        | nC                          |
| Gate Charge at -5V                     | $Q_g(-10)$        | $V_{GS} = 0$ to $-10\text{V}$   |     |     |           |                             |
| Threshold Gate Charge                  | $Q_g(\text{TH})$  | $V_{GS} = 0$ to $-2\text{V}$  |     |     |           |                             |
| Thermal Resistance Junction to Case    | $R_{\theta JC}$   |   | -   | -   | 3.125     | $^{\circ}\text{C}/\text{W}$ |
| Thermal Resistance Junction to Ambient | $R_{\theta JA}$   | TO-251AA, TO-252AA  | -   | -   | 100       | $^{\circ}\text{C}/\text{W}$ |
|  |                   | TO-220AB  | -   | -   | 62.5      | $^{\circ}\text{C}/\text{W}$ |

## Source to Drain Diode Specifications $T_C = 25^{\circ}\text{C}$ Unless Otherwise Specified

| PARAMETER                              | SYMBOL   | TEST CONDITIONS  | MIN | TYP | MAX  | UNITS |
|--|----------|--|-----|-----|------|-------|
| Source to Drain Diode Voltage (Note 2) | $V_{SD}$ | $I_{SD} = -8\text{A}$  | -   | -   | -1.5 | V     |
| Reverse Recovery Time                  | $t_{rr}$ | $I_{SD} = -8\text{A}$ , $dI_{SD}/dt = 100\text{A}/\mu\text{s}$ | -   | -   | 125  | ns    |

NOTE:

2. Pulse test: pulse width  $\leq 300\mu\text{s}$ , Duty Cycle  $\leq 2\%$ .
3. Repetitive rating: pulse width is limited by maximum junction temperature.

Typical Performance Curves Unless Otherwise Specified

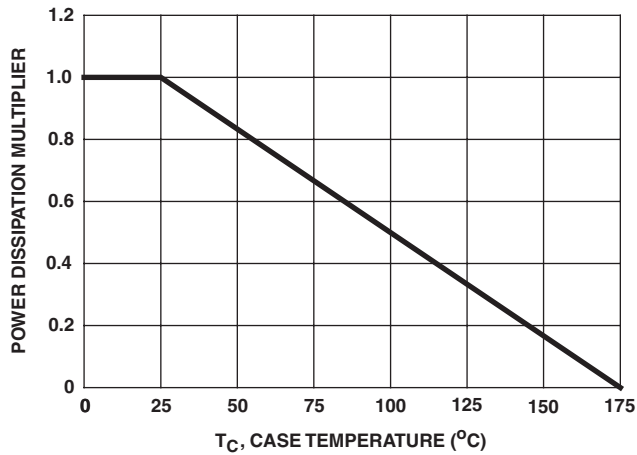


FIGURE 1. NORMALIZED POWER DISSIPATION vs CASE TEMPERATURE

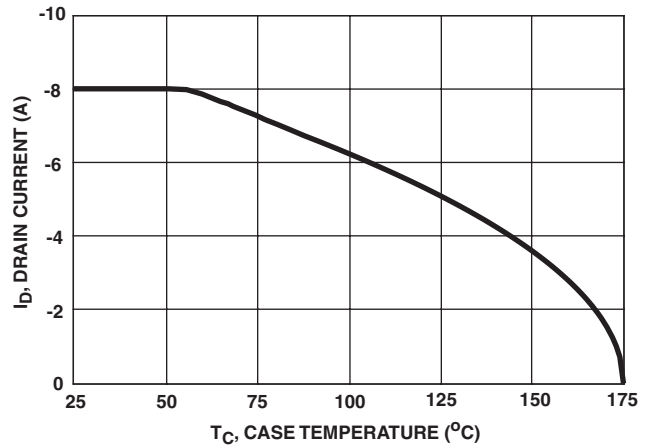


FIGURE 2. MAXIMUM CONTINUOUS DRAIN CURRENT vs CASE TEMPERATURE

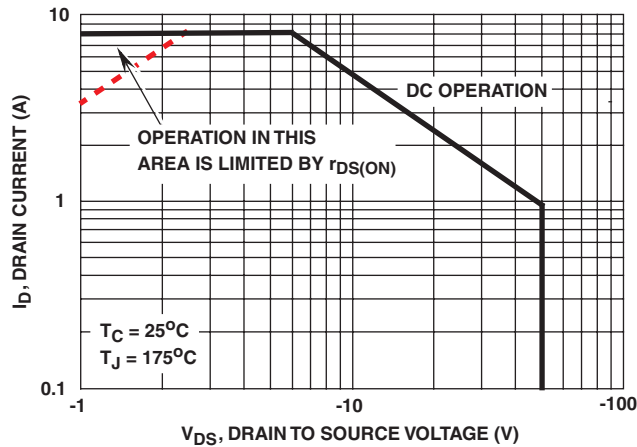


FIGURE 3. FORWARD BIAS SAFE OPERATING AREA

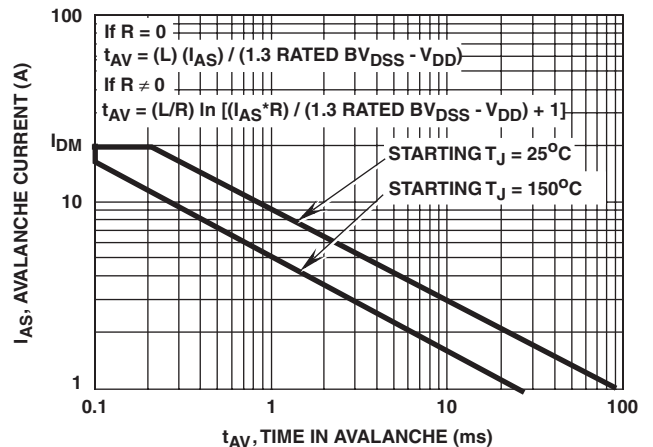


FIGURE 4. UNCLAMPED INDUCTIVE SWITCHING CAPABILITY

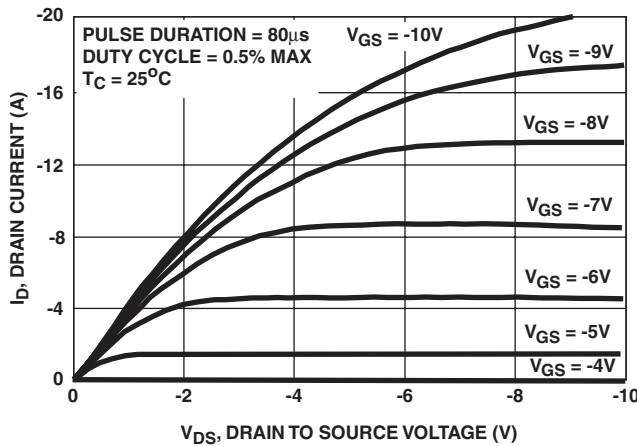


FIGURE 5. SATURATION CHARACTERISTICS

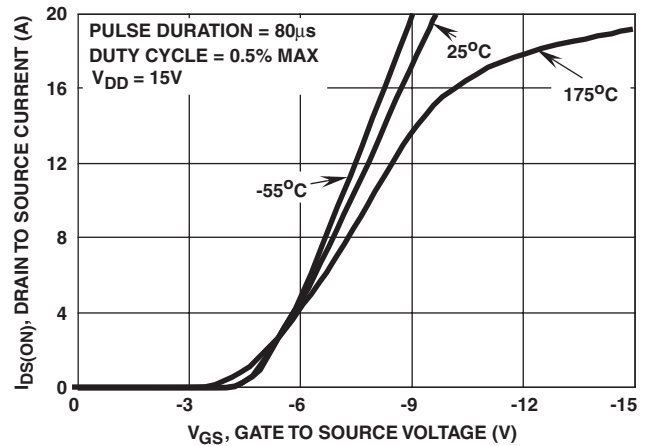


FIGURE 6. TRANSFER CHARACTERISTICS

**Typical Performance Curves** Unless Otherwise Specified

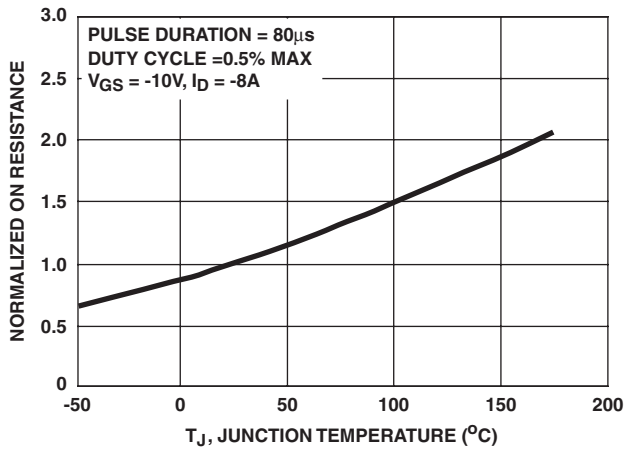


FIGURE 7. NORMALIZED DRAIN TO SOURCE ON RESISTANCE vs JUNCTION TEMPERATURE

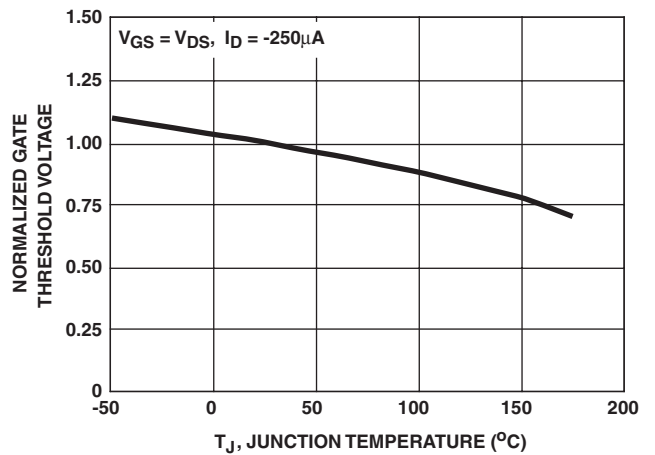


FIGURE 8. NORMALIZED GATE THRESHOLD VOLTAGE vs JUNCTION TEMPERATURE

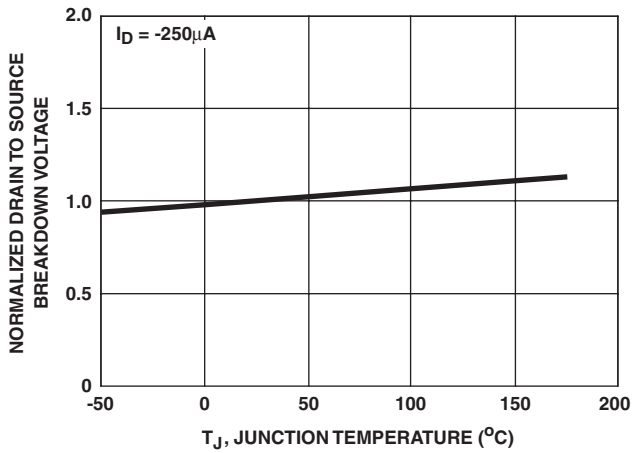


FIGURE 9. NORMALIZED DRAIN TO SOURCE BREAKDOWN VOLTAGE vs JUNCTION TEMPERATURE

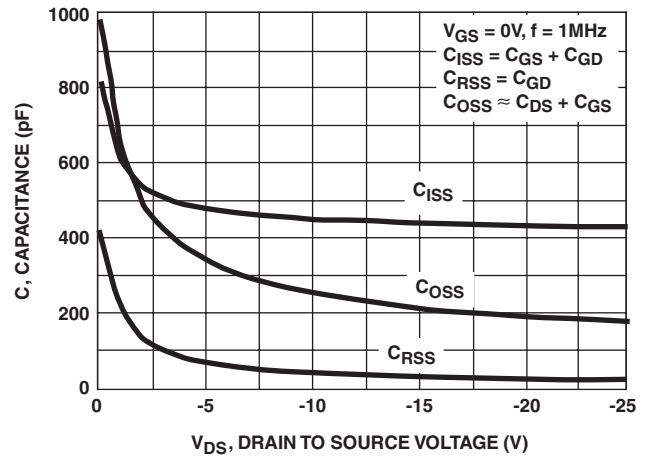
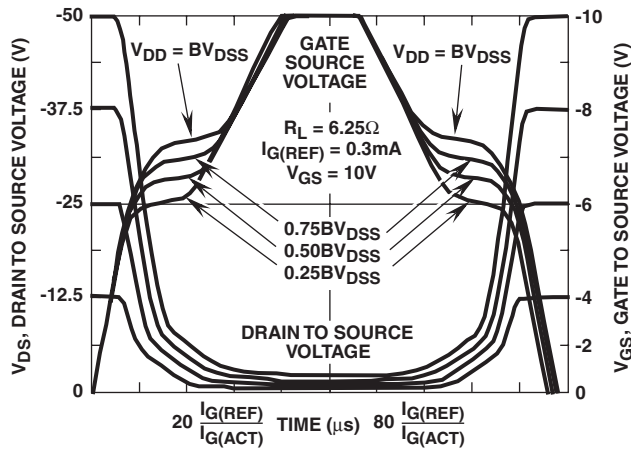


FIGURE 10. CAPACITANCE vs DRAIN TO SOURCE VOLTAGE



NOTE: Refer to Application Notes AN7254 and AN7260.

FIGURE 11. NORMALIZED SWITCHING WAVEFORMS FOR CONSTANT GATE CURRENT

Test Circuits and Waveforms

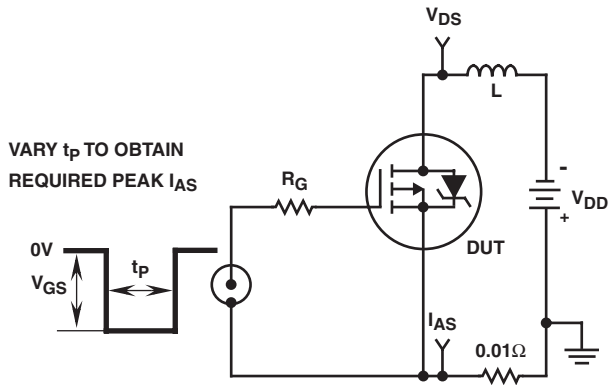


FIGURE 12. UNCLAMPED ENERGY TEST CIRCUIT

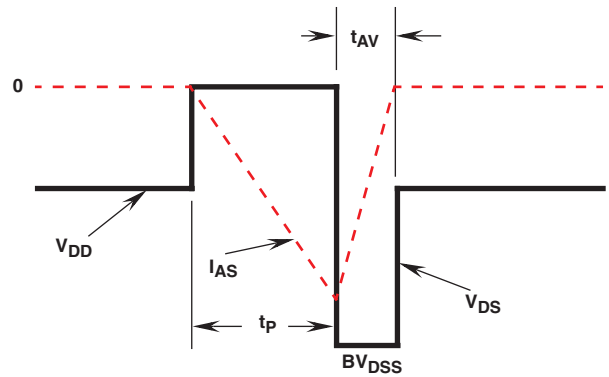


FIGURE 13. UNCLAMPED ENERGY WAVEFORMS

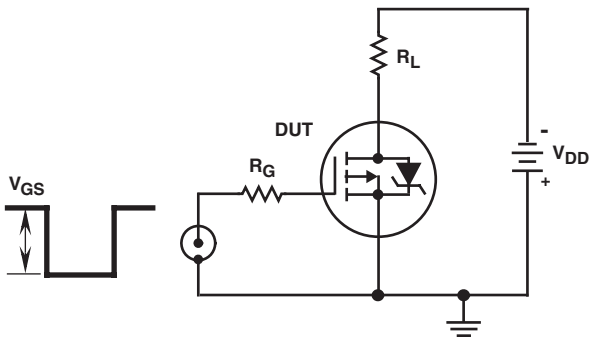


FIGURE 14. SWITCHING TIME TEST CIRCUIT

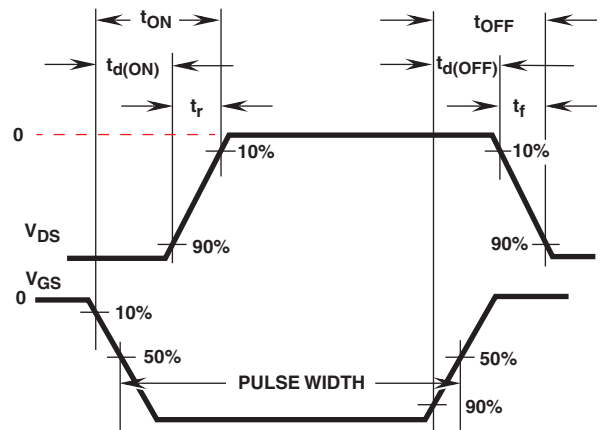


FIGURE 15. RESISTIVE SWITCHING WAVEFORMS

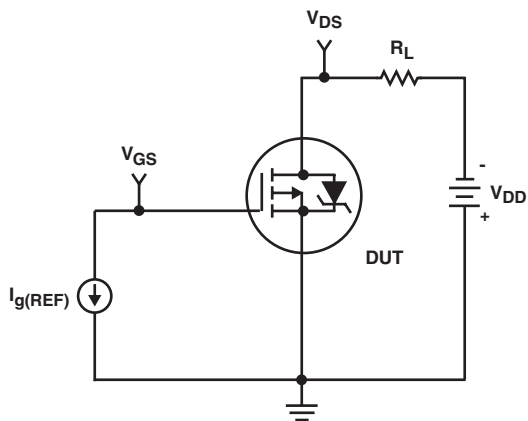


FIGURE 16. GATE CHARGE TEST CIRCUIT

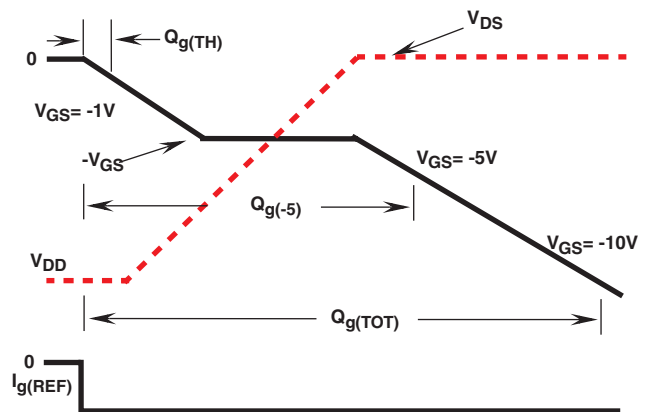


FIGURE 17. GATE CHARGE WAVEFORMS

## TRADEMARKS

The following are registered and unregistered trademarks Fairchild Semiconductor owns or is authorized to use and is not intended to be an exhaustive list of all such trademarks.

|                                   |                                  |                                  |                              |                   |
|-----------------------------------|----------------------------------|----------------------------------|------------------------------|-------------------|
| ACE <sub>x</sub> <sup>TM</sup>    | FAST <sup>®</sup>                | OPTOLOGIC <sup>TM</sup>          | SMART START <sup>TM</sup>    | VCX <sup>TM</sup> |
| Bottomless <sup>TM</sup>          | FAST <sub>r</sub> <sup>TM</sup>  | OPTOPLANAR <sup>TM</sup>         | STAR*POWER <sup>TM</sup>     |                   |
| CoolFET <sup>TM</sup>             | FRFET <sup>TM</sup>              | PACMAN <sup>TM</sup>             | Stealth <sup>TM</sup>        |                   |
| CROSSVOLT <sup>TM</sup>           | GlobalOptoisolator <sup>TM</sup> | POP <sup>TM</sup>                | SuperSOT <sup>TM</sup> -3    |                   |
| DenseTrench <sup>TM</sup>         | GTO <sup>TM</sup>                | Power247 <sup>TM</sup>           | SuperSOT <sup>TM</sup> -6    |                   |
| DOMET <sup>TM</sup>               | HiSeC <sup>TM</sup>              | PowerTrench <sup>®</sup>         | SuperSOT <sup>TM</sup> -8    |                   |
| EcoSPARK <sup>TM</sup>            | ISOPLANAR <sup>TM</sup>          | QFET <sup>TM</sup>               | SyncFET <sup>TM</sup>        |                   |
| E <sup>2</sup> CMOS <sup>TM</sup> | LittleFET <sup>TM</sup>          | QS <sup>TM</sup>                 | TinyLogic <sup>TM</sup>      |                   |
| EnSigna <sup>TM</sup>             | MicroFET <sup>TM</sup>           | QT Optoelectronics <sup>TM</sup> | TruTranslation <sup>TM</sup> |                   |
| FACT <sup>TM</sup>                | MicroPak <sup>TM</sup>           | Quiet Series <sup>TM</sup>       | UHC <sup>TM</sup>            |                   |
| FACT Quiet Series <sup>TM</sup>   | MICROWIRE <sup>TM</sup>          | SILENT SWITCHER <sup>®</sup>     | UltraFET <sup>®</sup>        |                   |

STAR\*POWER is used under license

## DISCLAIMER

FAIRCHILD SEMICONDUCTOR RESERVES THE RIGHT TO MAKE CHANGES WITHOUT FURTHER NOTICE TO ANY PRODUCTS HEREIN TO IMPROVE RELIABILITY, FUNCTION OR DESIGN. FAIRCHILD DOES NOT ASSUME ANY LIABILITY ARISING OUT OF THE APPLICATION OR USE OF ANY PRODUCT OR CIRCUIT DESCRIBED HEREIN; NEITHER DOES IT CONVEY ANY LICENSE UNDER ITS PATENT RIGHTS, NOR THE RIGHTS OF OTHERS.

## LIFE SUPPORT POLICY

FAIRCHILD'S PRODUCTS ARE NOT AUTHORIZED FOR USE AS CRITICAL COMPONENTS IN LIFE SUPPORT DEVICES OR SYSTEMS WITHOUT THE EXPRESS WRITTEN APPROVAL OF FAIRCHILD SEMICONDUCTOR CORPORATION.

As used herein:

1. Life support devices or systems are devices or systems which, (a) are intended for surgical implant into the body, or (b) support or sustain life, or (c) whose failure to perform when properly used in accordance with instructions for use provided in the labeling, can be reasonably expected to result in significant injury to the user.
2. A critical component is any component of a life support device or system whose failure to perform can be reasonably expected to cause the failure of the life support device or system, or to affect its safety or effectiveness.


## PRODUCT STATUS DEFINITIONS

### Definition of Terms

| Datasheet Identification | Product Status         | Definition  |
|--------------------------|------------------------|---|
| Advance Information      | Formative or In Design | This datasheet contains the design specifications for product development. Specifications may change in any manner without notice.  |
| Preliminary              | First Production       | This datasheet contains preliminary data, and supplementary data will be published at a later date. Fairchild Semiconductor reserves the right to make changes at any time without notice in order to improve design. |
| No Identification Needed | Full Production        | This datasheet contains final specifications. Fairchild Semiconductor reserves the right to make changes at any time without notice in order to improve design.   |
| Obsolete                 | Not In Production      | This datasheet contains specifications on a product that has been discontinued by Fairchild semiconductor. The datasheet is printed for reference information only.   |

## Looking for pricing, stock, or lifecycle information?

Click below to explore more details on WIN SOURCE:

-  [View D8P05 on WIN SOURCE](#)
-  [Fairchild/ON Semiconductor Information](#)

## Optimize Your Supply Chain with WIN SOURCE Solutions

-  Global Sourcing Solution
-  Obsolete Management
-  Cost Control Management
-  Shortage Management
-  Alternative Solution
-  Excess Inventory Management