



**THE DATASHEET OF
MAX40100ANT+**



MAX40100

Precision, Low-Power and Low-Noise Op Amp with RRIO

General Description

The MAX40100 is a low-power, zero-drift operational amplifier available in a space-saving, 6-bump, wafer-level package (WLP).

Designed for use in portable consumer, medical, and industrial applications, the MAX40100 features rail-to-rail CMOS inputs and outputs, a 1.5MHz GBW at just 66µA supply current, and 10µV (max) “zero-drift” input voltage offset over time and temperature.

The zero-drift feature of the MAX40100 reduces the high 1/f noise typically found in CMOS input operational amplifiers, making it useful for a wide variety of low-frequency measurement applications.

The MAX40100 is available in a space-saving, 1.1 x 0.76mm, 6-bump WLP with 0.35mm bump pitch.

The MAX40100 is specified over the -40°C to +125°C extended automotive operating temperature range.

Benefits and Features

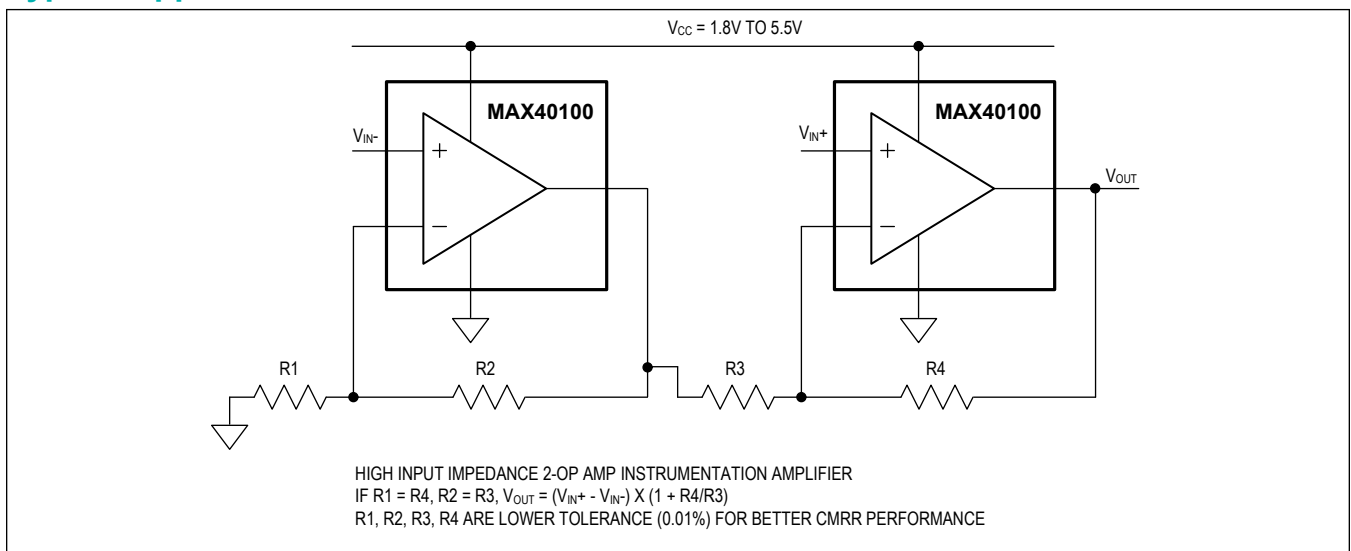
- Low 66µA Quiescent Current
- Low Input Noise:
 - 42nV/√Hz at 1kHz
 - 0.42µV_{p-p} from 0.1Hz to 10Hz
- Rail-to-Rail Inputs and Outputs (RRIO)
- 1.5MHz GBW
- Ultra-Low 10pA Input Bias Current
- Single 1.6V to 5.5V Supply Voltage Range
- Unity Gain Stable
- Power-Saving Shutdown Mode
- Tiny, 1.1mm x 0.76mm, 6-bump WLP

Ordering Information appears at end of data sheet.

Applications

- Cell Phones
- Sensor Interfaces
- Loop-Powered Systems
- Portable Medical Devices
- Battery-Powered Devices

Typical Application Circuit



Absolute Maximum Ratings

IN+, IN-, Supply Voltage, SHDN (V_{DD} to GND) -0.3V to +6V
 OUT(GND - 0.3V) to (V_{DD} + 0.3V)
 Short-Circuit Duration to Either Supply Rail,
 OUT, OUTA, OUTB 10s
 Continuous Input Current (Any Pins)..... ±20mA
 Continuous Power Dissipation (T_A = +70°C).....
 6-Bump WLP (Derate 10.19mW/°C above +70°C)..... 816mW

Package Thermal Characteristics (multilayer board)
 Junction-to-Ambient Thermal Resistance (θ_{JA}) 98.06°C/W
 Operating Temperature Range-40°C to +125°C
 Junction Temperature +150°C
 Storage Temperature Range -65°C to +150°C
 Lead Temperature (soldering 10s)..... +300°C

Note 1: Package thermal resistances were obtained using the method described in JEDEC specification JESD51-7, using a four-layer board. For detailed information on package thermal considerations, refer to www.maximintegrated.com/thermal-tutorial.

Stresses beyond those listed under "Absolute Maximum Ratings" may cause permanent damage to the device. These are stress ratings only, and functional operation of the device at these or any other conditions beyond those indicated in the operational sections of the specifications is not implied. Exposure to absolute maximum rating conditions for extended periods may affect device reliability.

Package Information

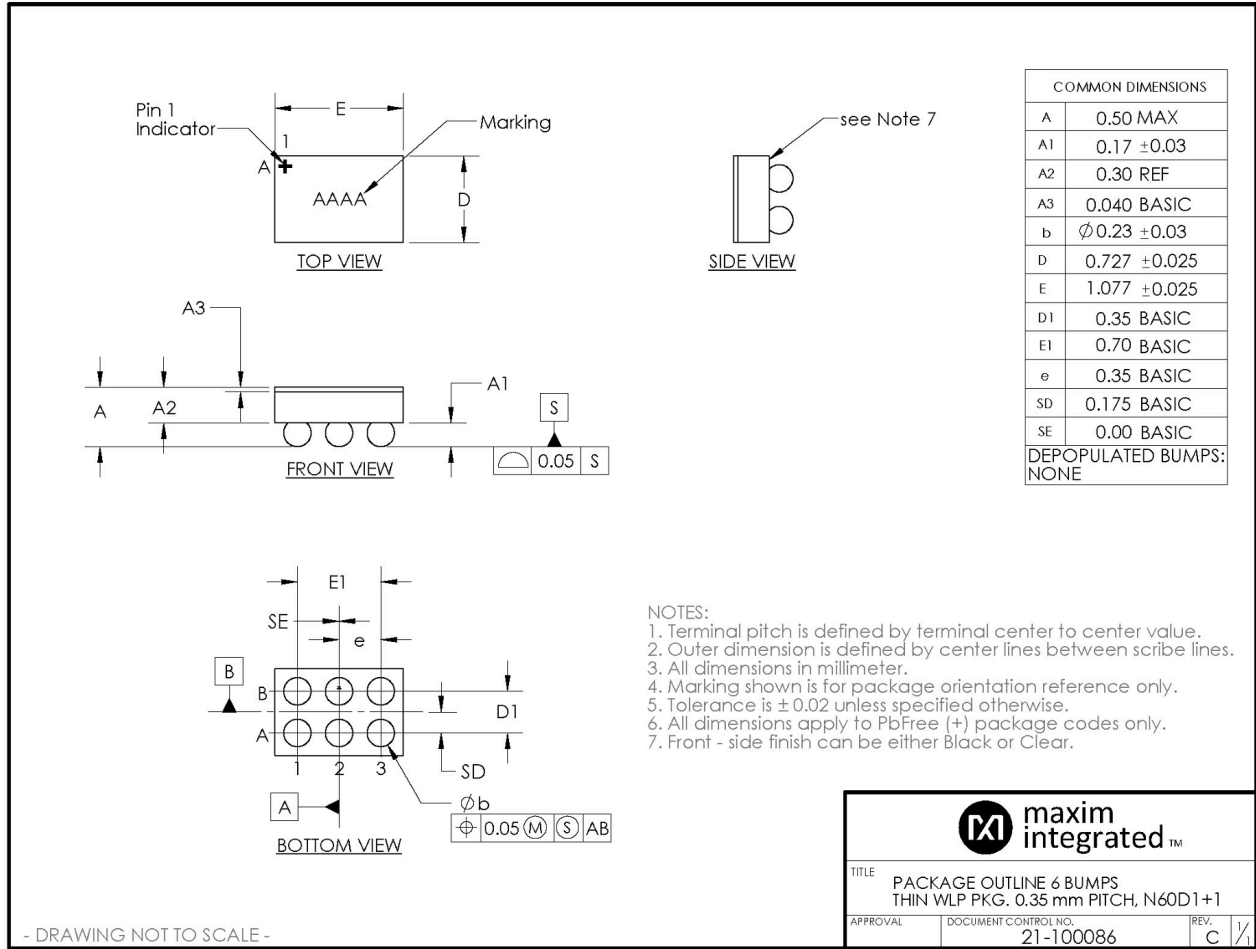
6 WLP

Package Code	N60D1+1
Outline Number	21-100086
Land Pattern Number	Refer to Application Note 1891

For the latest package outline information and land patterns (footprints), go to www.maximintegrated.com/packages. Note that a "+", "#", or "-" in the package code indicates RoHS status only. Package drawings may show a different suffix character, but the drawing pertains to the package regardless of RoHS status.

Package thermal resistances were obtained using the method described in JEDEC specification JESD51-7, using a four-layer board. For detailed information on package thermal considerations, refer to www.maximintegrated.com/thermal-tutorial.

Package Outline Drawing



- DRAWING NOT TO SCALE -

Electrical Characteristics

($V_{DD} = +3.3V$, $GND = 0$, $A_V = 1V/V$, $V_{OUT} = V_{DD}/2$, $C_L = 20pF$, $R_L = 100k\Omega$ to $V_{DD}/2$, $V_{SHDN} = V_{DD}$, $T_A = -40^\circ C$ to $+125^\circ C$ unless otherwise noted. Typical values are at $+25^\circ C$) ([Note 2](#))

PARAMETER	SYMBOL	CONDITIONS	MIN	TYP	MAX	UNITS
POWER SUPPLY						
Supply Voltage Range	V_{DD}	Guaranteed by PSRR, $0^\circ C \leq T_A \leq +70^\circ C$	1.6		5.5	V
		Guaranteed by PSRR, $-40^\circ C \leq T_A \leq +125^\circ C$	1.8		5.5	
Quiescent Supply Current	I_{DD}	$T_A = +25^\circ C$		66	92	μA
		$-40^\circ C \leq T_A \leq +125^\circ C$			124	
Power-Supply Rejection Ratio	PSRR	$V_{DD} = 1.8V$ to $5.5V$	$T_A = +25^\circ C$	116	135	dB
			$-40^\circ C \leq T_A \leq +125^\circ C$	107		
		$0^\circ C \leq T_A \leq +70^\circ C$, $V_{DD} = 1.6V$ to $5.5V$	107			
Power-Up Time	t_{ON}	$V_{DD} = 0$ to $3V$ step, $A_V = 1V/V$		20		μs
Shutdown Supply Current	I_{SHDN}				300	nA
Turn-On Time from Shutdown	t_{OSD}	$V_{DD} = 3.3V$, $V_{SHDN} = 0$ to $3.3V$ step in $< 1\mu s$		50		μs
DC SPECIFICATIONS						
Input Offset Voltage	V_{OS}	$T_A = +25^\circ C$		0.8	10	μV
		$-40^\circ C \leq T_A \leq +125^\circ C$			25	
Input Offset Voltage Drift	ΔV_{OS}			5		nV/ $^\circ C$
Input Bias Current (Note 3)	I_B	$T_A = +25^\circ C$		± 0.031	± 0.160	nA
		$-40^\circ C \leq T_A \leq +85^\circ C$			± 4.6	
		$-40^\circ C \leq T_A \leq +125^\circ C$			± 28	
Input Offset Current	I_{OS}			± 0.005		nA
Input Common-Mode Range	V_{CM}	Guaranteed by CMRR test	$T_A = +25^\circ C$	-0.1	$V_{DD} + 0.1$	V
			$-40^\circ C \leq T_A \leq +125^\circ C$	-0.1	$V_{DD} + 0.05$	
Common-Mode Rejection Ratio	CMRR	$-0.1 \leq V_{CM} \leq V_{DD} + 0.1$, $T_A = +25^\circ C$	122	135		dB
		$-0.1 \leq V_{CM} \leq V_{DD} + 0.05$, $-40^\circ C \leq T_A \leq +125^\circ C$	116			
Open-Loop Gain	A_{VOL}	$20mV \leq V_{OUT} \leq V_{DD} - 20mV$, $R_L = 100k\Omega$ to $V_{DD}/2$	120	138		dB
		$150mV \leq V_{OUT} \leq V_{DD} - 150mV$, $R_L = 5k\Omega$ to $V_{DD}/2$	123	160		
Input Resistance	R_{IN}	Differential		50		M Ω
		Common-mode		200		

Electrical Characteristics (continued)

($V_{DD} = +3.3V$, $GND = 0$, $A_V = 1V/V$, $V_{OUT} = V_{DD}/2$, $C_L = 20pF$, $R_L = 100k\Omega$ to $V_{DD}/2$, $V_{SHDN} = V_{DD}$, $T_A = -40^\circ C$ to $+125^\circ C$ unless otherwise noted. Typical values are at $+25^\circ C$) (*Note 2*)

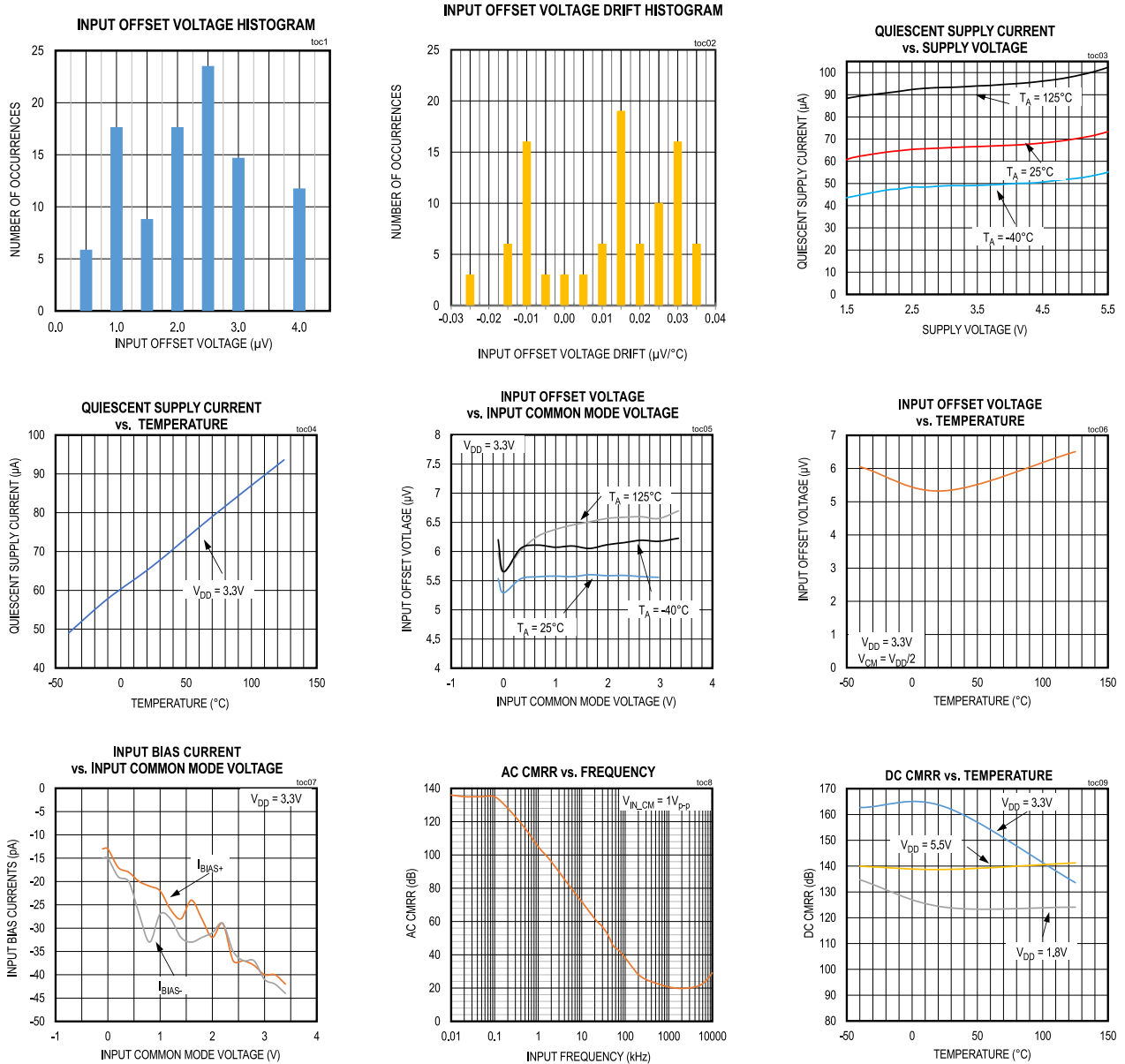
PARAMETER	SYMBOL	CONDITIONS	MIN	TYP	MAX	UNITS
Output Voltage Swing	V_{OH}	$V_{DD} - V_{OUT}$	$R_L = 100k\Omega$ to $V_{DD}/2$		12	mV
			$R_L = 50k\Omega$ to $V_{DD}/2$		22	
			$R_L = 600\Omega$ to $V_{DD}/2$	50		
	V_{OL}	V_{OUT}	$R_L = 100k\Omega$ to $V_{DD}/2$		11	
			$R_L = 50k\Omega$ to $V_{DD}/2$		18	
			$R_L = 600\Omega$ to $V_{DD}/2$	50		
Short-Circuit Current	I_{SC}			50		mA
AC SPECIFICATIONS						
Gain-Bandwidth Product	GBWP			1.5		MHz
Slew Rate	SR	$0 \leq V_{OUT} \leq 2V$		0.7		V/ μs
Input Voltage Noise Density	E_n	$f_{SW} = 1kHz$		42		nV/ \sqrt{Hz}
Input Voltage Noise		$0.1Hz \leq f_{SW} \leq 10Hz$		0.42		μV_{P-P}
Input Current Noise Density		$f_{SW} = 1kHz$		100		fA/ \sqrt{Hz}
Phase Margin		$C_L = 20pF$		60		$^\circ$
Capacitive Loading	C_L	No sustained oscillation, $A_V = 1V/V$		400		pF
LOGIC INPUT						
Shutdown Input Low	V_{IL}				0.5	V
Shutdown Input High	V_{IH}		1.3			V
Shutdown Input Leakage Current	I_{IL}/I_{IH}				100	nA

Note 2: Specifications are 100% tested at $T_A = +25^\circ C$ (exceptions noted). All temperature limits are guaranteed by design.

Note 3: Guaranteed by design.

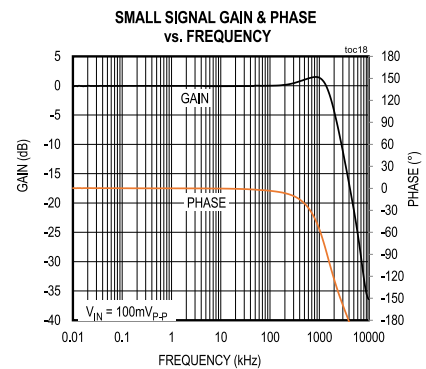
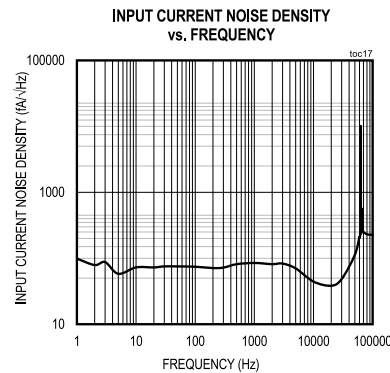
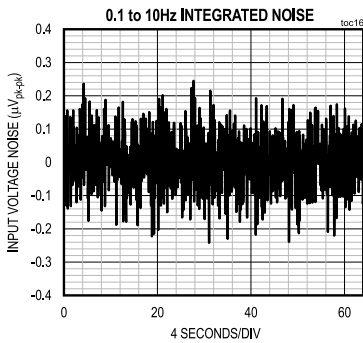
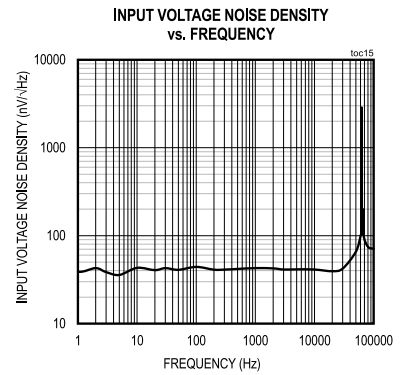
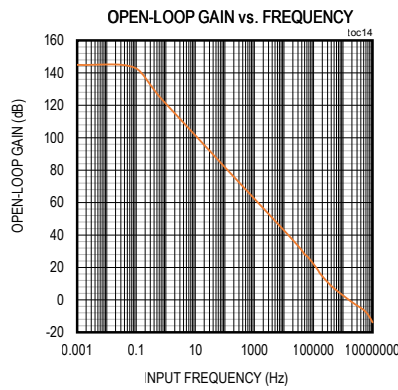
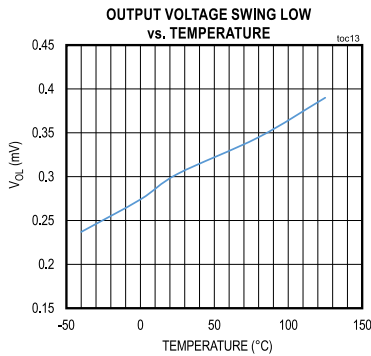
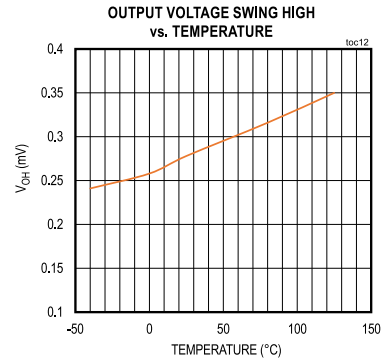
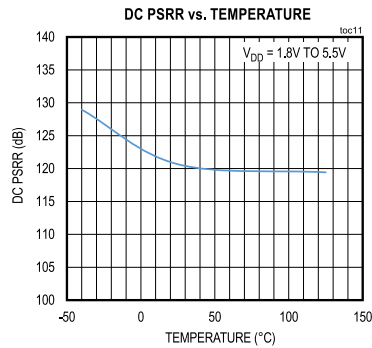
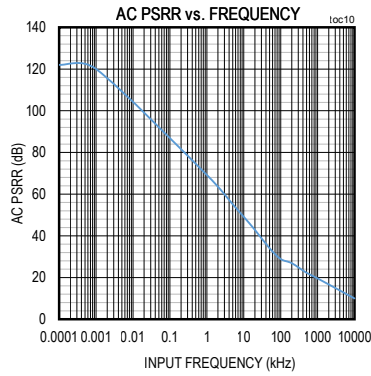
Typical Operating Characteristics

($V_{DD} = +3.3V$, $GND = 0$, $A_V = 1V/V$, $V_{OUT} = V_{DD}/2$, $C_L = 20pF$, $R_L = 100k\Omega$ to $V_{DD}/2$, $V_{SHDN} = V_{DD}$, $T_A = -40^\circ C$ to $+125^\circ C$ unless otherwise noted. Typical values are at $+25^\circ C$)



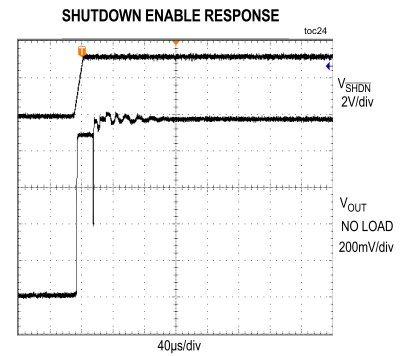
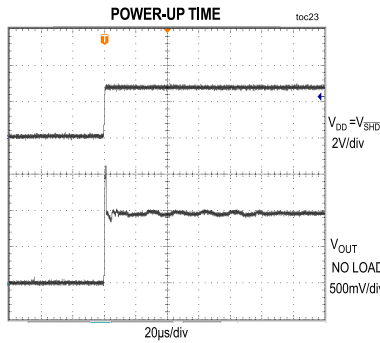
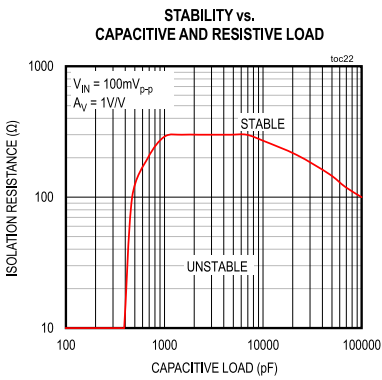
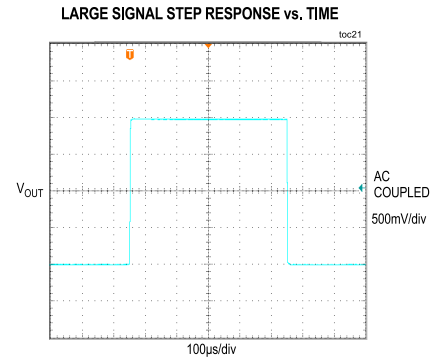
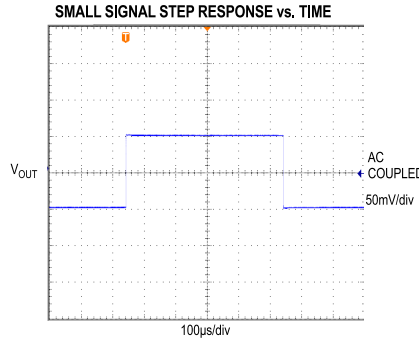
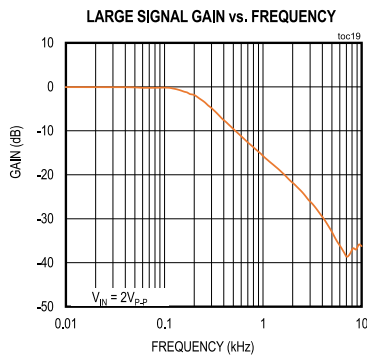
Typical Operating Characteristics (continued)

($V_{DD} = +3.3V$, $GND = 0$, $A_V = 1V/V$, $V_{OUT} = V_{DD}/2$, $C_L = 20pF$, $R_L = 100k\Omega$ to $V_{DD}/2$, $V_{SHDN} = V_{DD}$, $T_A = -40^\circ C$ to $+125^\circ C$ unless otherwise noted. Typical values are at $+25^\circ C$)

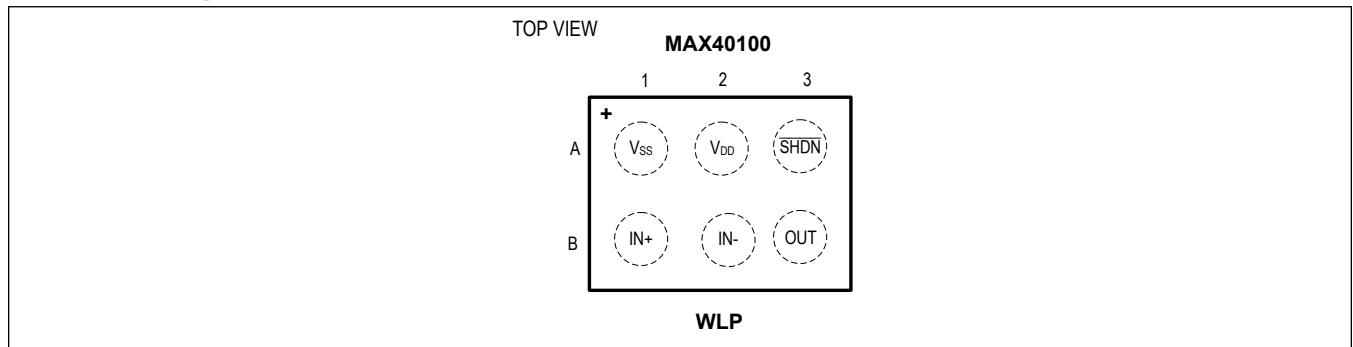


Typical Operating Characteristics (continued)

($V_{DD} = +3.3V$, $GND = 0$, $A_V = 1V/V$, $V_{OUT} = V_{DD}/2$, $C_L = 20pF$, $R_L = 100k\Omega$ to $V_{DD}/2$, $V_{SHDN} = V_{DD}$, $T_A = -40^\circ C$ to $+125^\circ C$ unless otherwise noted. Typical values are at $+25^\circ C$)



Bump Configuration



Bump Descriptions

PIN	NAME	FUNCTION
A1	V_{SS}	Negative Supply Voltage
A2	V_{DD}	Positive Supply Voltage. Bypass to GND with a 0.1µF capacitor.
A3	SHDN	Shutdown. Pull to V_{SS} to activate shutdown mode.

Bump Descriptions (continued)

PIN	NAME	FUNCTION
B1	IN+	Positive Input
B2	IN-	Negative Input
B3	OUT	Output

Detailed Description

The MAX40100 is a precision, low-power op-amps ideal for signal processing applications. This device use an innovative auto-zero technique that allows precision and low-noise with a minimum amount of power. The low input offset voltage, CMOS inputs, and the absence of $1/f$ noise allows for optimization of active-filter designs.

The MAX40100 achieves rail-to-rail performance at the input through the use of a low-noise charge pump. This ensures a glitch-free, common-mode input voltage range extending from the negative supply rail up to the positive supply rail, eliminating cross over distortion common to traditional N-channel/P-channel CMOS pair inputs, reducing harmonic distortion at the output.

The device features a shutdown mode that greatly reduces quiescent current while the device is not operational.

Auto-Zero

The MAX40100 features an auto-zero circuit that allows the device to achieve less than $10\mu\text{V}$ of input offset voltage and eliminates the $1/f$ noise.

Internal Charge Pump

An internal charge pump provides an internal supply typically 1V beyond the upper rail. This internal rail allows the MAX40100 to achieve true rail-to-rail inputs and outputs, while providing excellent common-mode rejection, power-supply rejection ratios, and gain linearity.

The charge pump requires no external components, and in most applications is entirely transparent to the user. The operating frequency is well beyond the unity-gain frequency of the amplifier, avoiding aliasing or other signal integrity issues in sensitive applications.

Shutdown Operation

The device features an active-low shutdown mode that lowers the quiescent current to less than $1\mu\text{A}$. In shutdown mode the inputs and output are high impedance. This allows multiple devices to be multiplexed onto a single line without the use of external buffers. Pull SHDN high for normal operation.

The shutdown high (V_{IH}) and low (V_{IL}) threshold voltages are designed for ease of integration with digital controls like microcontroller outputs. These thresholds are independent of supply, eliminating the need for external pulldown circuitry.

Applications Information

The MAX40100 is a low-power, low-noise, precision operational amplifier designed for applications in the portable medical (such as ECG and Pulse Oximetry), portable consumer, and industrial markets.

The MAX40100 is also ideal for loop-powered systems that interface with pressure sensors or strain-gauges.

Capacitive Load Stability

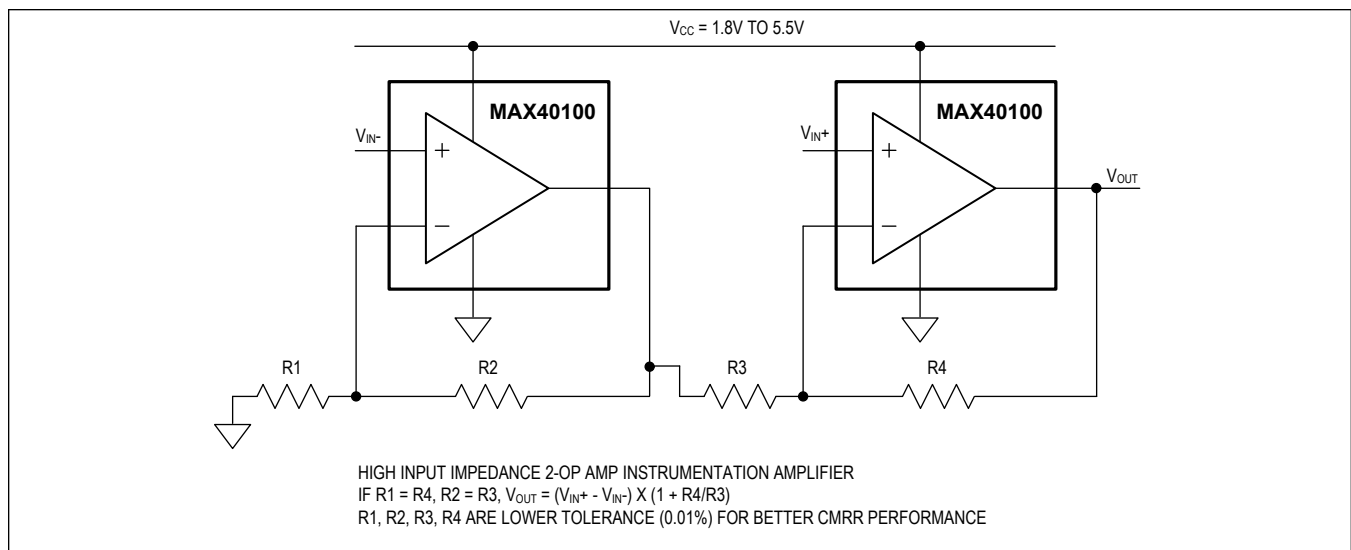
Driving large capacitive loads can cause instability in many op amps. MAX40100 is stable with capacitive loads up to 400pF. Stability with higher capacitive loads can be improved by adding an isolation resistor in series with the op-amp output. This resistor improves the circuit's phase margin by isolating the load capacitor from the amplifier's output. The graph in the [Typical Operating Characteristics](#) gives the stable operation region for capacitive load versus isolation resistors.

Power Supplies and Layout

The MAX40100 operate either with a single supply from +1.6V to +5.5V with respect to ground or with dual supplies from $\pm 0.8V$ to $\pm 2.75V$. When used with dual supplies, bypass both supplies with their own 0.1 μF capacitor to ground. When used with a single supply, bypass V_{DD} with a 0.1 μF capacitor to ground.

Careful layout technique helps optimize performance by decreasing the amount of stray capacitance at the op amp's inputs and outputs. To decrease stray capacitance, minimize trace lengths by placing external components close to the op amp's pins.

Typical Application Circuit



Ordering Information

PART	TEMP RANGE	PIN-PACKAGE
MAX40100ANT+	-40°C to +125°C	6 WLP

+Denotes lead(Pb)-free/RoHS compliant package.

Revision History

REVISION NUMBER	REVISION DATE	DESCRIPTION	PAGES CHANGED
0	5/16	Initial release	—
1	6/17	Updated units in <i>Electrical Characteristics</i> table	2, 3
2	3/18	Updated <i>Absolute Maximum Ratings</i> sections	2
3	3/20	Updated TOC02	4
4	1/21	Updated <i>Benefits and Features</i> , added <i>Package Outline Drawing</i>	1, 3
5	2/21	Added <i>Typical Application Circuit</i>	1

For pricing, delivery, and ordering information, please visit Maxim Integrated's online storefront at <https://www.maximintegrated.com/en/storefront/storefront.html>.

Maxim Integrated cannot assume responsibility for use of any circuitry other than circuitry entirely embodied in a Maxim Integrated product. No circuit patent licenses are implied. Maxim Integrated reserves the right to change the circuitry and specifications without notice at any time. The parametric values (min and max limits) shown in the Electrical Characteristics table are guaranteed. Other parametric values quoted in this data sheet are provided for guidance.

Looking for pricing, stock, or lifecycle information?

Click below to explore more details on WIN SOURCE:

 [View MAX40100ANT+ on WIN SOURCE](#)

 [Analog Devices Inc. Information](#)

Optimize Your Supply Chain with WIN SOURCE Solutions

-  Global Sourcing Solution
-  Obsolete Management
-  Cost Control Management
-  Shortage Management
-  Alternative Solution
-  Excess Inventory Management