



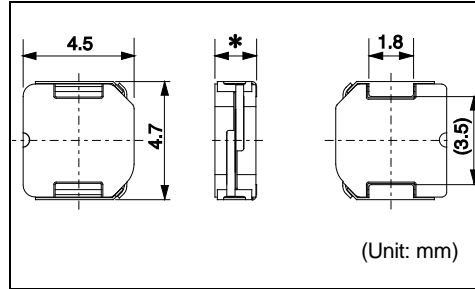
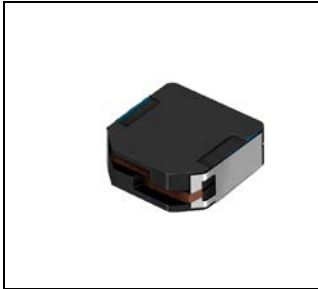
**THE DATASHEET OF
1235AS-H-4R3M=P3**



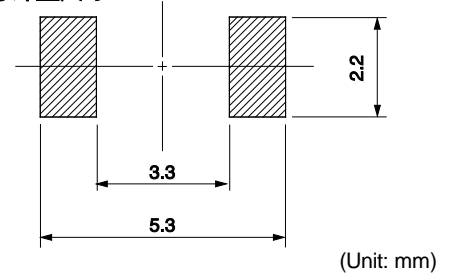
DEM4518C



Inductance Range: 1.2~22μH



Recommended patterns
推荐焊盘尺寸



FEATURES 特点

- Low profile (4.5×4.7mm square, 1.8mm Max. height).
- Magnetically shielded construction and low DC resistance.
- Ideal for a variety of DC-DC converter inductor applications.
- Operating temperature (−40~+85°C)
- 薄型构造（4.5×4.7毫米的平面，最大高度1.8毫米）
- 磁性屏蔽结构和低直流电阻
- 是多种DC-DC转换器电感器设备的理想选择
- 使用温度范围：−40 ~ +85°C

STANDARD PART NUMBERS 标准零件号码

TYPE DEM4518C (Quantity/reel; 2,000 PCS)

| 零件号码 | 电感值 ⁽¹⁾ | 公差 | 最大直流电阻 ⁽²⁾ (典型) | 最大电感减小电流 ⁽³⁾ (典型) | 最大温度上升电流 ⁽³⁾ (典型) |
|------------------|-----------------------------------|---------------|--|--|---|
| Part Number | Inductance ⁽¹⁾ (μH) | Tolerance (%) | DC Resistance ⁽²⁾ (mΩ) Max. (Typ.) | Inductance Decrease Current ⁽³⁾ (A) Max. (Typ.) $\frac{\Delta L}{L} = 30\%$ | Temperature Rise Current ⁽³⁾ $\Delta T = 40^\circ\text{C}$ (A) Max. (Typ.) |
| 1235AS-H-1R2N=P3 | 1.2 | ± 30 | 47 (39) | 3.50 (4.70) | 2.90 (3.40) |
| 1235AS-H-1R8N=P3 | 1.8 | ± 30 | 56 (47) | 3.00 (3.90) | 2.70 (3.20) |
| 1235AS-H-2R4M=P3 | 2.4 | ± 20 | 65 (54) | 2.60 (3.40) | 2.30 (2.70) |
| 1235AS-H-3R3M=P3 | 3.3 | ± 20 | 74 (62) | 2.30 (3.00) | 2.10 (2.50) |
| 1235AS-H-4R3M=P3 | 4.3 | ± 20 | 84 (70) | 2.00 (2.65) | 2.00 (2.40) |
| 1235AS-H-6R8M=P3 | 6.8 | ± 20 | 106 (88) | 1.70 (2.20) | 1.90 (2.20) |
| 1235AS-H-100M=P3 | 10 | ± 20 | 132 (110) | 1.30 (1.75) | 1.70 (2.00) |
| 1235AS-H-150M=P3 | 15 | ± 20 | 192 (160) | 0.98 (1.30) | 1.10 (1.30) |
| 1235AS-H-220M=P3 | 22 | ± 20 | 306 (255) | 0.91 (1.20) | 1.00 (1.20) |

- (1) Inductance is measured with a LCR meter 4284A (Agilent Technologies) or equivalent. Test frequency at 100kHz
- (2) DC resistance is measured with 34420A (Agilent Technologies) or 3541(HIOKI). (Reference ambient temperature 25°C)
- (3) Maximum allowable DC current is that which causes a 30% inductance reduction from the initial value, or coil temperature to rise by 40°C, whichever is smaller. (Reference ambient temperature 20°C)

- (1) LCR仪表4284A (Agilent技术)或者功能相同的仪器在100kHz下测试电感值。
- (2) 通过数码万用表34420A (Agilent技术) 或者3541(HIOKI)测试直流电阻。(环境温度为25°C)
- (3) 允许最大直流电的范围是以下两者中比较小的一个：引起电感值从最初值降低30%，或者线圈温度升高40°C。(参考周围环境温度20°C)。

Looking for pricing, stock, or lifecycle information?

Click below to explore more details on WIN SOURCE:

- ⊖ [View 1235AS-H-4R3M=P3 on WIN SOURCE](#)
- ⊖ [Murata Electronics North America Information](#)

Optimize Your Supply Chain with WIN SOURCE Solutions

- ✓ Global Sourcing Solution
- ✓ Obsolete Management
- ✓ Cost Control Management
- ✓ Shortage Management
- ✓ Alternative Solution
- ✓ Excess Inventory Management