

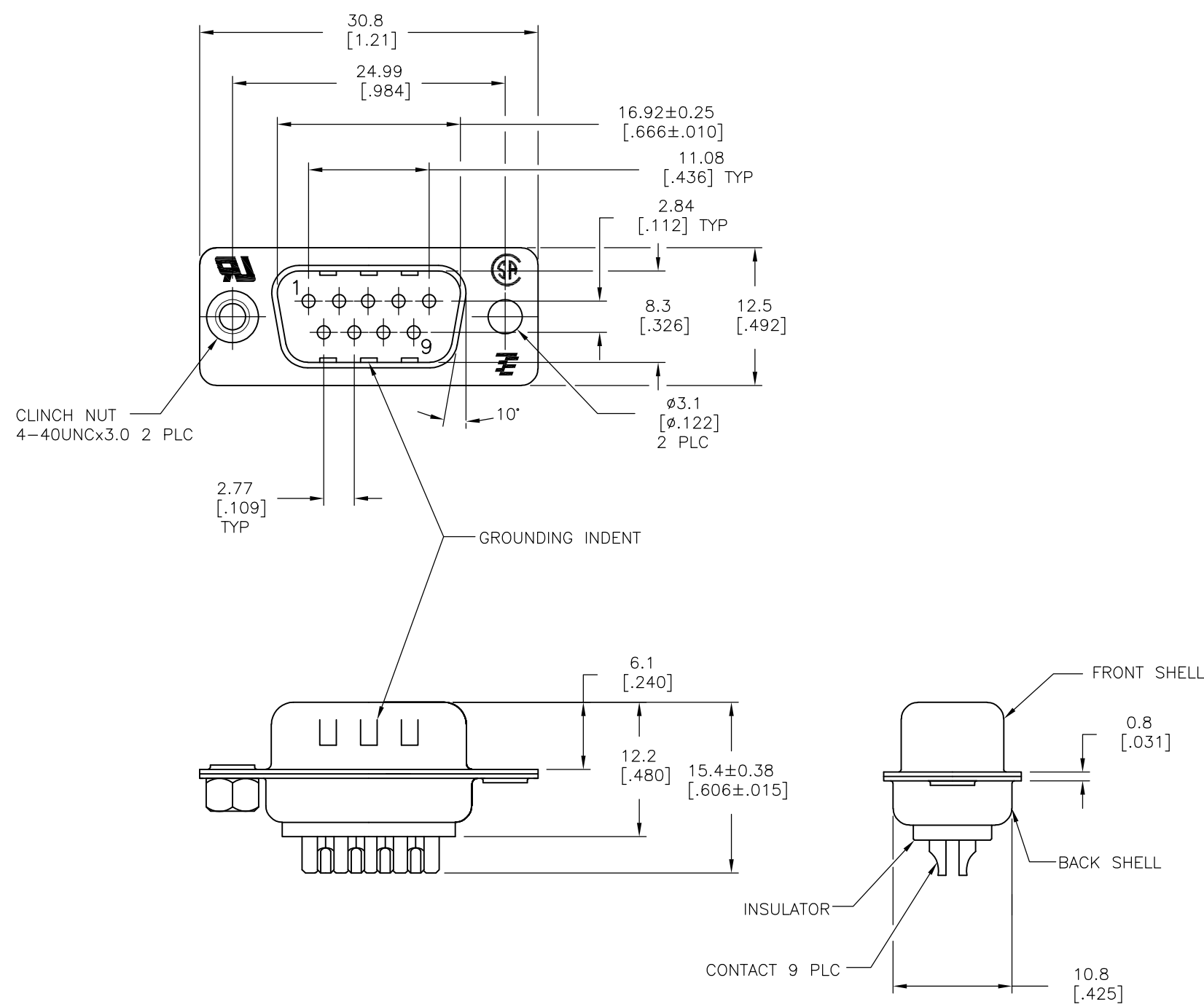


**THE DATASHEET OF**  
**5-747904-4**



THIS DRAWING IS UNPUBLISHED. RELEASED FOR PUBLICATION  
 © COPYRIGHT - By - ALL RIGHTS RESERVED.

LOC	DIST	REVISIONS					
		P	LTR	DESCRIPTION	DATE	DWN	APVD
GP	00		Y	REVISED PER ECO-14-002311	17FEB2014	BM	DG



- 1 MATERIAL:  
FRONT INSULATOR: PBT, 30 %GF, UL94V-0, BLACK COLOR  
BACK INSULATOR: PBT, 30 %GF, UL94V-0, BLACK COLOR  
CONTACT: BRASS  
FRONT & BACK SHELL: STEEL  
CLINCH NUTS: BRASS
- 2 FINISH:  
CONTACT: GOLD PLATING 0.00002[.0000008] MIN ON CONTACT AREA 0.00229 [.000090] MIN TIN-LEAD PLATING ALL OVER 0.00127[.000050] MIN NICKEL
- 3 CONTACT: GOLD PLATING 0.00076[.000030] MIN ON CONTACT AREA 0.00229 [.000090] MIN TIN-LEAD PLATING ALL OVER 0.00127[.000050] MIN NICKEL
- 4 SHELL: BRIGHT TIN 0.0241[.000095] MIN FULL SHELL
- 5 SHELL: BLUE ZINC: 0.00508[.000200] - 0.00762[.000300] OVER ENTIRE SHELL
- 6 CONTACT: GOLD PLATING 0.00002[.0000008] MIN ON CONTACT AREA 0.00229 [.000090] MIN HOT DIPPED TIN-COPPER PLATING ALL OVER 0.00127[.000050] MIN NICKEL
- 7 CLINCH NUTS: NICKEL PLATING .00305-.00508[.000120-.000200]
- 8 SPECIFICATION  
ELECTRICAL CHARACTERISTICS: CURRENT RATING: 3 AMPERES  
DIELECTRIC WITHSTANDING VOLTAGE: AC 1000V r.m.s  
INSULATION RESISTANCE: 5000 MEGOHMS MINIMUM AT DC 500V  
CONTACT RESISTANCE: 10 MILLIOHMS MAXIMUM.
- 9 ROHS 2002/95/EC/COMPLIANT
- 10 PLUG ASSEMBLY MATES WITH ANY 9 POSITION RECEPTACLE IN AMPLIMITE SERIES.
- 11 SOLDER CUP WILL ACCOMODATE 20 AWG MAX WIRE
- 12 CONTACT: GOLD PLATING 0.00076[.000030] MIN ON CONTACT AREA 0.00229[.000090] MIN HOT DIPPED TIN-COPPER ALL OVER 0.00127[.000050] MIN NICKEL PLATING

REV	DESCRIPTION	DATE	DWN	APVD	PART NO.		
9	STANDARD	NO	NO	6	4	5-747904-4	
9	STANDARD	YES	YES	6	4	5-747904-8	
9	STANDARD	NO	YES	12	4	5-747904-5	
9	STANDARD	NO	YES	6	4	5-747904-2	
9	OBSOLETE	STANDARD	NO	YES	6	4	747904-9
	OBSOLETE	STANDARD	YES	YES	2	4	747904-8
	OBSOLETE	STANDARD	NO	YES	3	4	747904-5
	OBSOLETE	STANDARD	NO	NO	2	5	747904-4
	OBSOLETE	STANDARD	NO	YES	2	4	747904-2
	PACKAGING TYPE	7 CLINCH NUTS	GROUNDING INDENTS	CONTACTS	SHELLS	PART NO.	

THIS DRAWING IS A CONTROLLED DOCUMENT. DIMENSIONING AND TOLERANCING PER ASME Y14.5M-2009

DIMENSIONS: mm	TOLERANCES UNLESS OTHERWISE SPECIFIED:	DWN M.BINNER 03MAR03	TE Connectivity
	0 PLC ± -	CHK R.BENDORF 05MAR03	
	1 PLC ± 0.25	APVD R.BENDORF 05MAR03	
	2 PLC ± 0.13	NAME	
	3 PLC ± 0.05	PRODUCT SPEC	PLUG ASSY, SOLDER CUP, SIZE 1, 9 POSN, HD-20, AMPLIMITE
	4 PLC ± -	APPLICATION SPEC	SIZE CAGE CODE DRAWING NO RESTRICTED TO
	ANGLES ± 4'	WEIGHT -	A3 00779 C-747904
MATERIAL 1	FINISH SEE TABLE	CUSTOMER DRAWING	SCALE 2:1 SHEET 1 OF 1 REV Y

## Looking for pricing, stock, or lifecycle information?

Click below to explore more details on WIN SOURCE:

 [View 5-747904-4 on WIN SOURCE](#)

 [TE Connectivity](#) Information

## Optimize Your Supply Chain with WIN SOURCE Solutions

-  Global Sourcing Solution
-  Obsolete Management
-  Cost Control Management
-  Shortage Management
-  Alternative Solution
-  Excess Inventory Management