



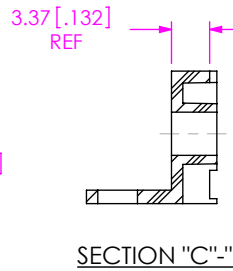
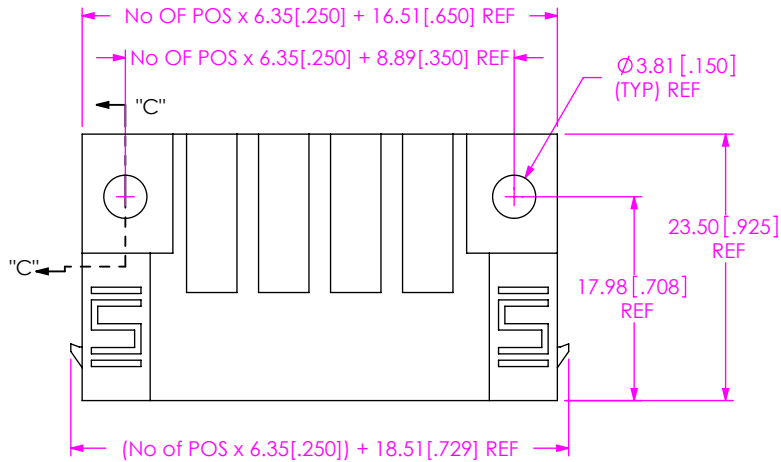
**THE DATASHEET OF
PET-06-02-L-RA-SD**



DO NOT SCALE FROM THIS PRINT

DESIGNED & DIMENSIONED IN MILLIMETERS [INCHES]

PET-XX-XX-X-RA-XX-XX



No OF POSITIONS
 -02, -04, -06, -08

LEAD STYLE

- 01: FOR 1.57 [.062] THICK PCB (USE SUB-T-1M34-01-X)
- 02: FOR 3.18 [1.25] THICK PCB (USE SUB-T-1M34-02-X)

* OPTION

- LC: LOCKING CLIP (NOT AVAILABLE WITH -SD) (USE LC-11-TM) (SEE FIG 2, SHT 2)
- SD: SCREW DOWN (NOT AVAILABLE WITH -LC) (SEE FIG 1, SHT 1)

OPTION

- NL: NO LATCH EARS (SEE FIG 3, SHT 2)

RIGHT ANGLE

PLATING SPECIFICATION

- S: SELECTIVE GOLD/MATTE TIN TAIL
- T: MATTE TIN
- L: LIGHT SELECTIVE GOLD/MATTE TIN TAIL

* - BLANK ONLY FOR EXISTING CUSTOMERS

STYLE	"A"	SUB-T-1M34-XX-X
-01	2.35 [.093]	SUB-T-1M34-01-X
-02	3.95 [.156]	SUB-T-1M34-02-X

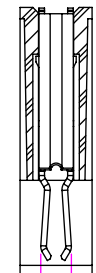
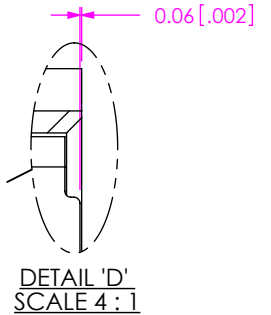
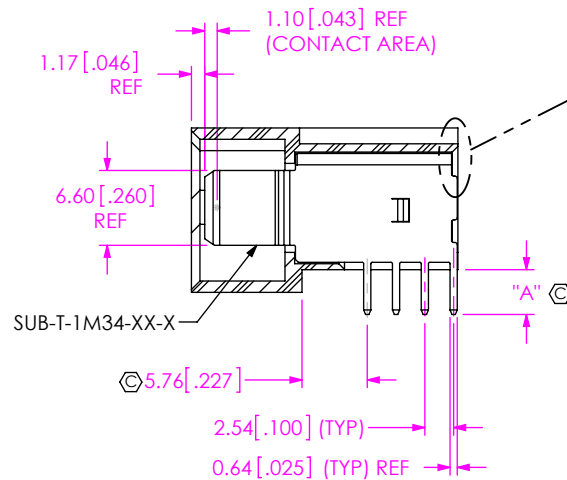
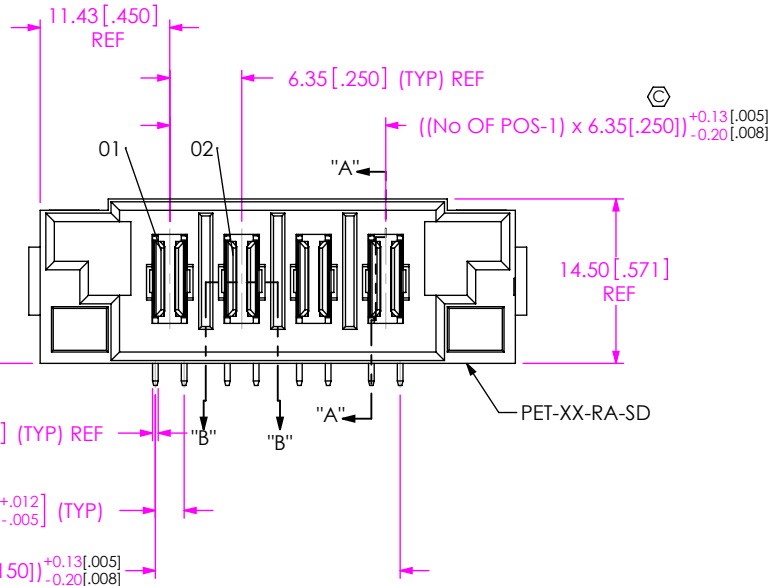


FIG 1
 PET-04-02-X-RA-SD SHOWN

SECTION "A"-"A"

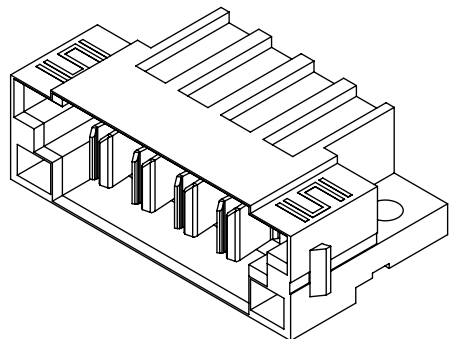
SECTION "B"-"B"

SEE TABLE 2

PART NUMBER	MAX
PET-02-XX-X-RA-XX	0.15 [.006]
PET-04-XX-X-RA-XX	0.15 [.006]
PET-06-XX-X-RA-XX	0.20 [.008]
PET-08-XX-X-RA-XX	0.20 [.008]

NOTES:

1. REPRESENTS A CRITICAL DIMENSION.
2. BURR ALLOWANCE: 0.038 [.0015] MAX.
3. MINIMUM PUSHOUT FORCE: 4.45N [1 LB].
4. PARTS TO BE PACKAGED IN TRAYS.
5. IF EMPTY SPACE EXISTS IN THE TRAY POCKETS, INSERT A PLUG TP-07 TO PREVENT PARTS FROM SLIDING



UNLESS OTHERWISE SPECIFIED, DIMENSIONS ARE IN MILLIMETERS.
 TOLERANCES ARE:
 DECIMALS ANGLES
 .X: $\pm 0.3 [0.1]$ 2°
 .XX: $\pm 0.13 [0.005]$
 .XXX: $\pm 0.051 [0.0020]$

PROPRIETARY NOTE
 THIS DOCUMENT CONTAINS CONFIDENTIAL AND PROPRIETARY INFORMATION AND ALL DESIGN, MANUFACTURING, REPRODUCTION, USE, PATENT RIGHTS AND SALES RIGHTS ARE EXPRESSLY RESERVED BY SAMTEC, INC. THIS DOCUMENT SHALL NOT BE DISCLOSED, IN WHOLE OR PART, TO ANY UNAUTHORIZED PERSON OR ENTITY NOR REPRODUCED, TRANSFERRED OR INCORPORATED IN ANY OTHER PROJECT IN ANY MANNER WITHOUT THE EXPRESS WRITTEN CONSENT OF SAMTEC, INC.

MATERIAL: DO NOT SCALE DRAWING SHEET SCALE: 1.5:1
 INSULATOR: LCP. COLOR: BLACK
 CONTACT: COPPER ALLOY

F:\DWG\MISC\MKTG\PET-XX-XX-X-RA-XX-XX-MKT.SLDDRW

samtec

520 PARK EAST BLVD, NEW ALBANY, IN 47150
 PHONE: 812-944-6733 FAX: 812-948-5047
 e-Mail: info@SAMTEC.com code: 55322

DESCRIPTION:
 RIGHT ANGLE POWER TERMINAL

DWG. NO.
 PET-XX-XX-X-RA-XX-XX

BY: CHAD F 3/28/2005 SHEET 1 OF 3

FIG 2
 PET-04-02-X-RA-LC SHOWN
 (SAME AS FIG 1, UNLESS OTHERWISE STATED)

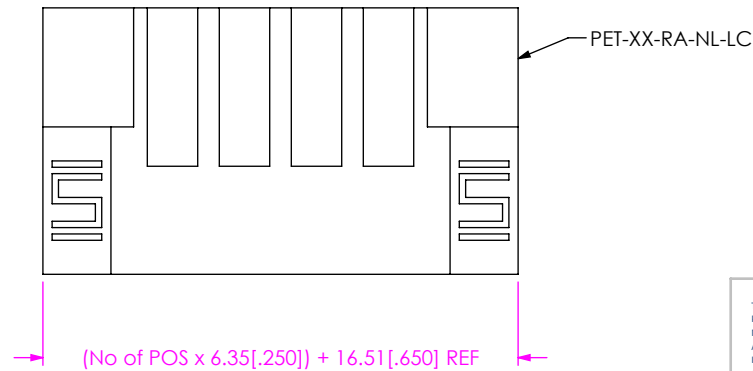
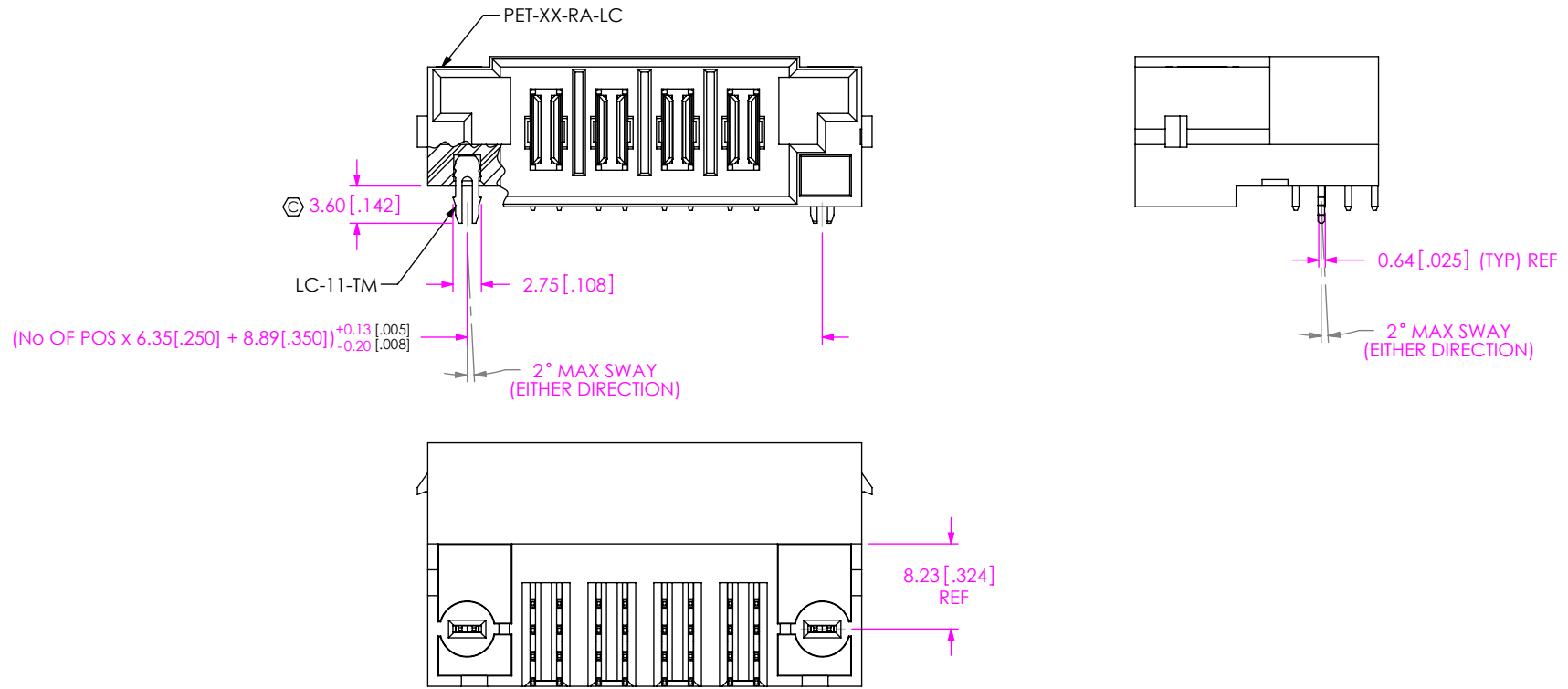
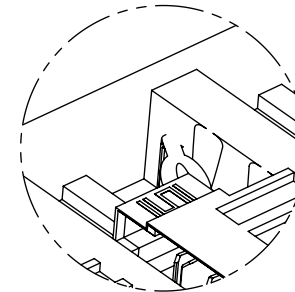
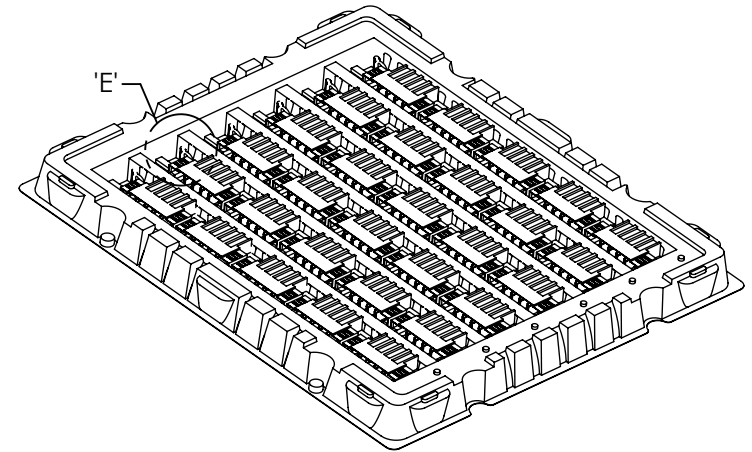
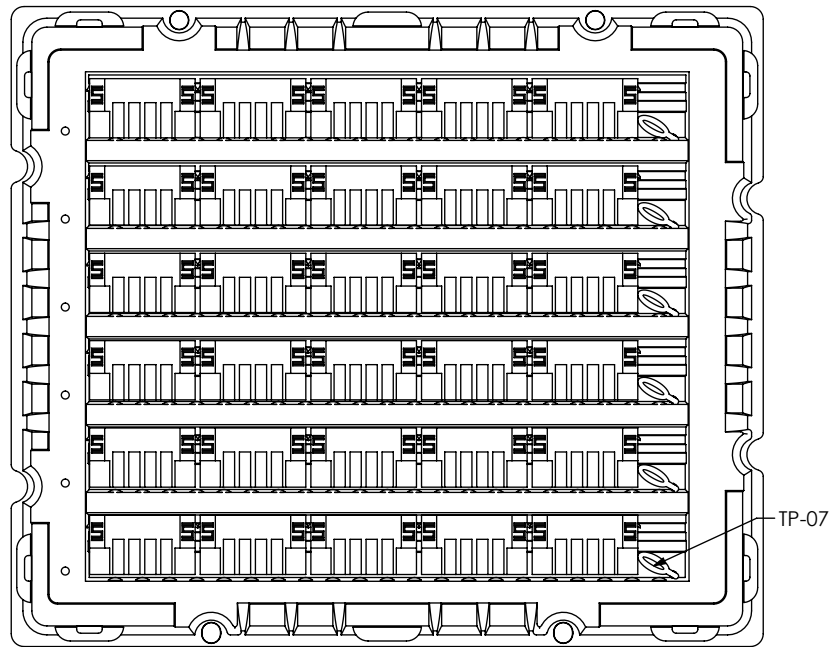


FIG 3
 -NL: OPTION
 PET-04-02-X-RA-NL-LC SHOWN
 (SAME AS FIG 1, UNLESS OTHERWISE STATED)

DO NOT SCALE DRAWING SHEET SCALE: 1.5:1	* PROPRIETARY NOTE * THIS DOCUMENT CONTAINS CONFIDENTIAL AND PROPRIETARY INFORMATION AND ALL DESIGN, MANUFACTURING, REPRODUCTION, USE, PATENT RIGHTS AND SALES RIGHTS ARE EXPRESSLY RESERVED BY SAMTEC, INC. THIS DOCUMENT SHALL NOT BE DISCLOSED, IN WHOLE OR PART, TO ANY UNAUTHORIZED PERSON OR ENTITY NOR REPRODUCED, TRANSFERRED OR INCORPORATED IN ANY OTHER PROJECT IN ANY MANNER WITHOUT THE EXPRESS WRITTEN CONSENT OF SAMTEC, INC.	 520 PARK EAST BLVD, NEW ALBANY, IN 47150 PHONE: 812-944-6733 FAX: 812-948-5047 e-Mail: info@SAMTEC.com code: 55322
	DESCRIPTION: RIGHT ANGLE POWER TERMINAL	
	DWG. NO. PET-XX-XX-X-RA-XX-XX	
BY: CHAD F 3/28/2005	SHEET 2 OF 3	



DETAIL 'E'
SCALE 1:1

FIG 4
PACKAGE IN TRAYS AS SHOWN
TRAY VIEW
(SEE NOTE 5)

<p>PROPRIETARY NOTE</p> <p>THIS DOCUMENT CONTAINS CONFIDENTIAL AND PROPRIETARY INFORMATION AND ALL DESIGN, MANUFACTURING, REPRODUCTION, USE, PATENT RIGHTS AND SALES RIGHTS ARE EXPRESSLY RESERVED BY SAMTEC, INC. THIS DOCUMENT SHALL NOT BE DISCLOSED, IN WHOLE OR PART, TO ANY UNAUTHORIZED PERSON OR ENTITY NOR REPRODUCED, TRANSFERRED OR INCORPORATED IN ANY OTHER PROJECT IN ANY MANNER WITHOUT THE EXPRESS WRITTEN CONSENT OF SAMTEC, INC.</p>	<p>samtec</p> <p>520 PARK EAST BLVD, NEW ALBANY, IN 47150 PHONE: 812-944-6733 FAX: 812-948-5047 e-Mail: info@SAMTEC.com code: 55322</p>
<p>DO NOT SCALE DRAWING</p>	<p>DESCRIPTION: RIGHT ANGLE POWER TERMINAL</p>
<p>SHEET SCALE: 1:3</p>	<p>DWG. NO. PET-XX-XX-X-RA-XX-XX</p>
<p></p>	<p>BY: CHAD F 3/28/2005 SHEET 3 OF 3</p>

Looking for pricing, stock, or lifecycle information?

Click below to explore more details on WIN SOURCE:

 [View PET-06-02-L-RA-SD on WIN SOURCE](#)

 [Samtec Inc. Information](#)

Optimize Your Supply Chain with WIN SOURCE Solutions

-  Global Sourcing Solution
-  Obsolete Management
-  Cost Control Management
-  Shortage Management
-  Alternative Solution
-  Excess Inventory Management