



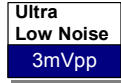
**THE DATASHEET OF
BR05-1220LB**



Bellnix® Ultra Low Noise, Small Size, Isolated Type DC-DC Converter

World Standard Analog Equipment

5 Watt BR-LB Series



Ultra Low Noise 3mVpp, Isolated Type DC-DC Converter

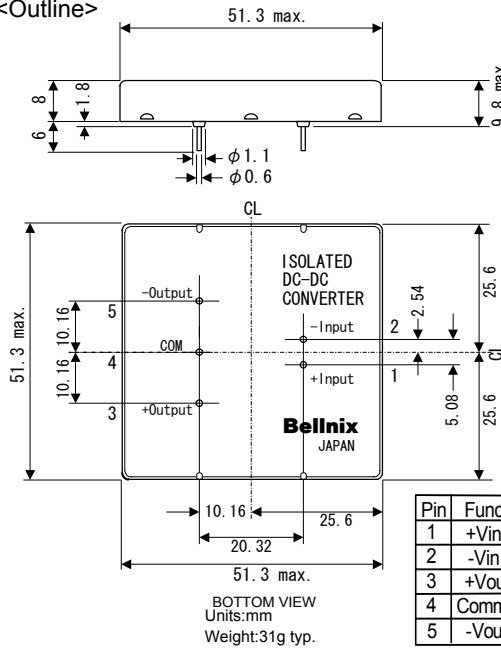
Input: 5V Output: ±12V, ±15V

- Ultra Low Noise 3mVp-p
- Analog, Digital Optimum
- Short Circuit, Over-Current Protection
- No Electrolytic Capacitor, No Tantalum Capacitor
- 5-Side Metallic shield structure
- EMI Line Filter
- Over-Heat Protection
- Long-Life with TCT Patent Circuit
- Isolation Voltage DC500V
- Low Drift 50mV/8H
- Temp Coefficient ±0.02%/°C
- Operating Temp Range -20°C to +70°C (Temp Derating Required)
- RoHS Compliance

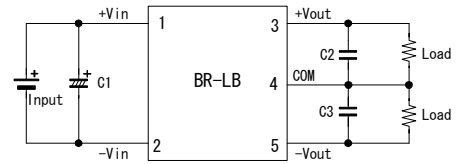
Models BR-LB Series	Input V Vdc	Output +V/I, -V/I +Vdc/mA, -Vdc/mA	Line Reg % (typ.)	Load Reg % (typ.)	Ripple/ Noise mVpp(max.)	Efficiency % (typ.)
BR05-1220LB	4.75-6	+12/208, -12/-208	0.03	0.18	3	64
BR05-1225LB		+12/250, -12/-125				
BR05-1516LB		+15/167, -15/-167				
BR05-1520LB		+15/200, -15/-100				

Note 1: Derating required for input voltages 5.25V or greater.

<Outline>



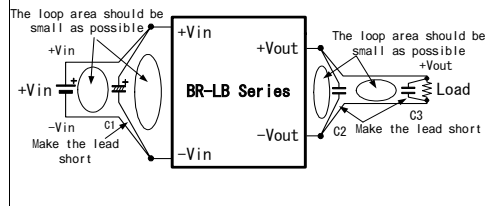
<Standard Connection Diagram>



- Recommended Capacitor

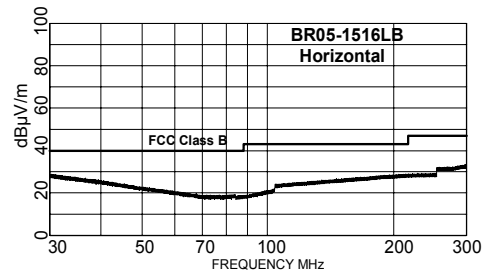
C1=100μF
C2,C3=1μF

External capacitors are not required, but noise can be lowered by reducing power line impedance, and load line impedance.

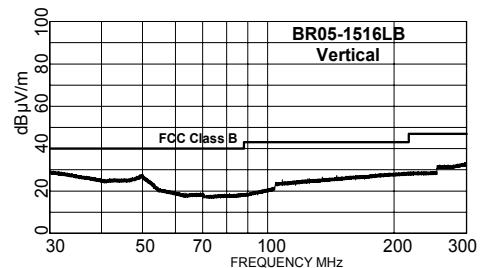
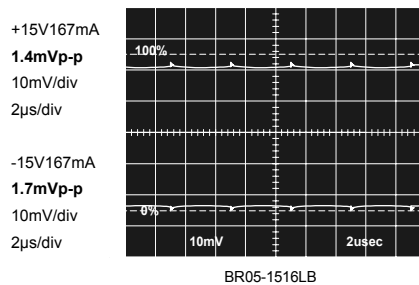


RADIATED EMISSION FCC Class B <3m>

Model Name **BR05-1516LB**
Serial No. ES1
Input +5V
Load ±15V 167mA
DET.Mode Peak
Limits 30MHz - 1000MHz
Band Number 3 Meas Mode : D
Antenna Mode Horizontal , Vertical
Test Equip. TR4172,TR14307





< BR05-1516LB > Output Noise



- Note!
This catalogue is an outline of the products. When designing, be sure to refer to the data sheets.

Looking for pricing, stock, or lifecycle information?

Click below to explore more details on WIN SOURCE:

-  [View BR05-1220LB on WIN SOURCE](#)
-  [Bellnix Co., Ltd. Information](#)

Optimize Your Supply Chain with WIN SOURCE Solutions

-  Global Sourcing Solution
-  Obsolete Management
-  Cost Control Management
-  Shortage Management
-  Alternative Solution
-  Excess Inventory Management