

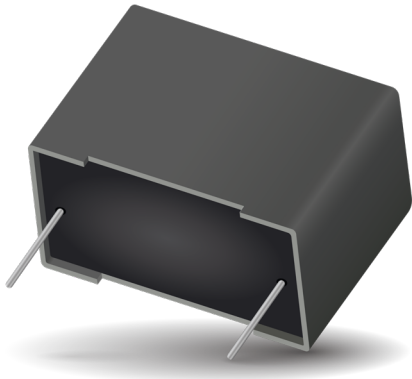


**THE DATASHEET OF  
FB37M6P0106KC**

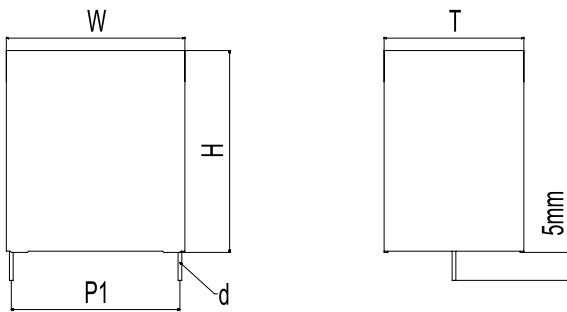


# DC FILTERING

FB\* RoHS Compliant



## DIMENSIONS



## STANDARDS

- IEC 61071-1: Power electronic capacitors
- IEC 61071-2: Power electronic capacitors
- IEC 60384-16: Fixed metallized polypropylene film dielectric DC capacitors
- IEC 60384-16-1: Fixed metallized polypropylene film dielectric DC capacitors Assessment level E
- IEC 60384-17: Fixed metallized polypropylene film dielectric AC and pulse capacitors
- IEC 60384-17-1: Fixed metallized polypropylene film dielectric AC and pulse capacitors
- EN CZDS2.E514026 Certificate: E514026 (approved by UL)

## HOW TO ORDER

<b>FB</b>	<b>27</b>	<b>E*</b>	<b>6</b>	<b>I</b>	<b>0335</b>	<b>K</b>	<b>C</b>
<b>Series</b>	<b>Pitch</b>	<b>Case Size</b>	<b>Type</b>	<b>Voltage</b>	<b>Cap</b>	<b>Tolerance</b>	<b>Lead Type</b>
FB	27 = 27.5mm 37 = 37.5mm	E* for P=27.5mm F* for P=37.5mm	6 = Standard 105°C 7 = THB Grade IIIB - 105°C 8 = THB 2000H - 125°C	I = 450V H = 500V J = 550V Q = 600V A = 700V B = 800V C = 900V K = 1000V L = 1100V P = 1200V	µF Code	K = ±10% M = ±20% J = ±5% refer Factory	C = 2 pins 5mm L = 2 pins 20mm min

\* THB - Temperature Humidity Bias

## GENERAL DESCRIPTION

The FB series uses a non-impregnated metallized polypropylene dielectric specially treated to have a very high dielectric strength in operation condition up to 125°C.

FB series performance characteristics make them a viable alternative to aluminum electrolytic technology due to much lower ESR and much higher surge voltage capability (dv/dt).

## GENERAL CHARACTERISTICS

- Able to Withstand Harsh Environment Conditions

## FEATURES & BENEFITS

- High Performance DC Filter
- Low ESR, High Peak & RMS Current
- THB Compliance
- Able to Withstand Harsh Environment Conditions (THB Compliance)

## APPLICATIONS

- Renewable Energy Inverter
- Motor Drives
- Industrial Power Supply
- UPS System

## OPERATING TEMPERATURE RANGE

- Operating temperature range : -40°C to + 105°C (Type 6 and 7)
- Operating temperature range : -40°C to + 125°C (Type 8)

## PACKAGING MATERIAL

Self-extinguishing plastic case (V0 = in accordance with UL 94) filled thermosetting resin.

Self-extinguishing thermosetting resin (V0 = in accordance with UL 94).

## LIFE EXPECTANCY

One unique feature of this technology (versus aluminum electrolytics) is how the capacitor reacts at the end of its lifetime.

Unlike aluminum electrolytic film capacitors do not have a catastrophic failure mode. Film capacitors simply experience a parametric loss of capacitance of about 2% from initial value, with no risk of short circuit.

The capacitor continues to be functional even after this 2% decrease.

# DC FILTERING

FB \*RoHS Compliant



## POLYPROPYLENE DIELECTRIC FOR INDUSTRIAL DC FILTERING

These capacitors have been designed primarily for high and medium power DC filtering applications.

### ELECTRICAL CHARACTERISTICS – POLYPROPYLENE DIELECTRIC

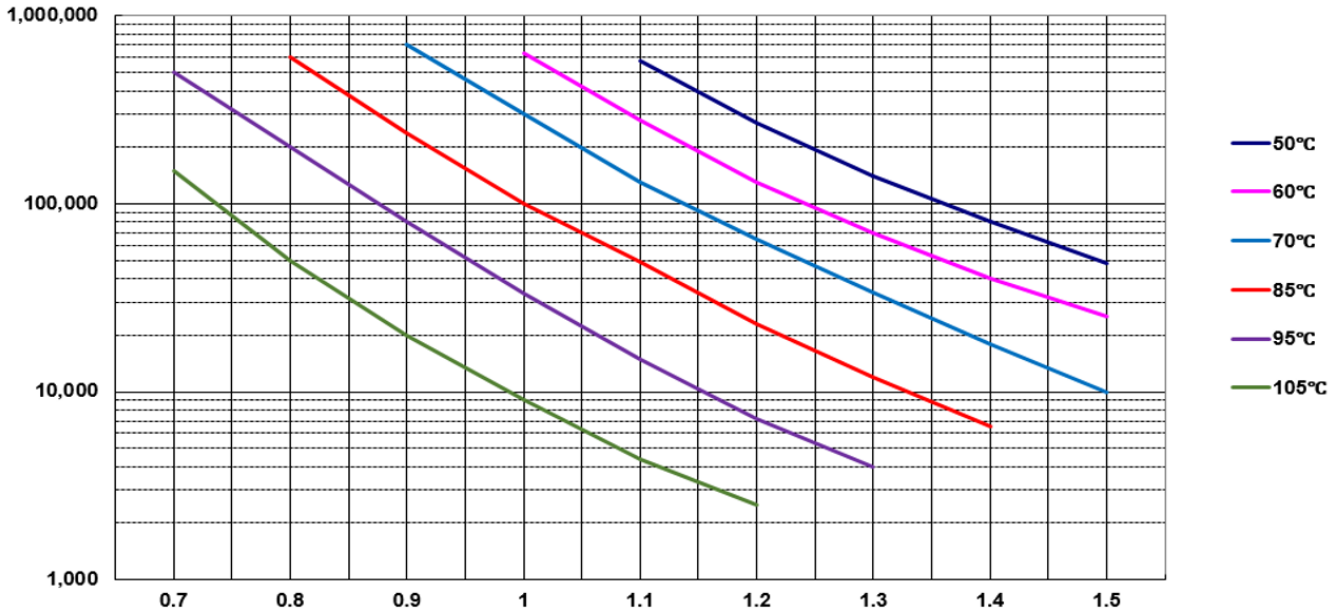
Items	Characteristics		
	Standard - 105°C	THB Grade IIIB - 105°C	THB 2000H - 125°C
Application	DC Filtering / DC Link		
Reference Standard	IEC 61071		
Climatic Category	40/85/56 IEC 60068-1		40/105/56 IEC 60068-1
Operating Temperature Range	-40°C ~ +105°C (85°C ~105°C, decreasing factor 1.25% per °C for Rated Voltage)		-40°C ~ +125°C (85°C ~125°C, decreasing factor 1.11% per °C for Rated Voltage)
Upper Temperature Tmax	105°C		125°C
Lower Temperature Tmin	-40°C		-55°C
Rated Voltage	450Vdc ~ 1200Vdc		450Vdc ~ 1100Vdc
Capacitance Range	1uF ~ 220uF		
Capacitance Tolerance	±10% at +25°C		
Dissipation Factor (DF)	≤0.002 (0.2%) at 1KHz; C ≤20μF at 25°C		
	≤0.003 (0.3%) at 1KHz; C >20μF at 25°C		
	≤0.004 (0.4%) at 1KHz; C >80μF at 25°C		
Test Voltage Between Terminals	1.5 x rated voltage for 10s (terminal to terminal)		
Test Voltage Terminal to Case	3.0kVrms 50 Hz for 10 sec at +25°C		
Insulation Resistance	IR x C≥30,000 Seconds at 100VDC 1 minute at +25°C		
Life Expectancy	100,000 hours at Un @ Hot-Spot temperature T=+85°C		100,000 hours at Un @ Hot-Spot temperature T=+85°C
			20,000 hours at Un @ Hot-Spot temperature T=+105°C
			5,000 hours at Un @ Hot-Spot temperature T=+115°C
			4,000 hours at Un @ Hot-Spot temperature T=+125°C
Protection	Solvent resistant plastic case UL94 V-0 Thermosetting resin sealing UL 94 V-0 compliant		
Installation	Any position		
Leads	Tinned copper wires, standard lead wire length 5 ±1mm		
Packaging	Packed in cardboard boxes with protection for the terminals		
RoHS Compliant	Compliant with the restricted substance requirements of Directive 2011/65/EU		
Storage Conditions	Storage time: ≤ 24 months from the date marked on the label package		
	Temperature and relative humidity should be -10°C ~ +40°C and not more than 75%RH.		
	RH ≤ 85% for 30 days randomly distributed throughout the year		
Humidity Test	Test conditions & performance:		
	Temperature: +40°C±2°C		
	Relative humidity (RH): 93% ±2%		
	Test duration: 56 days		
	Capacitance change: ≤±5% DF change (@tgδ): ≤50 X 10 <sup>-4</sup> at 1KHz Insulation resistance: ≥50% of initial limit		
Endurance Test	Test conditions & performance:		
	Temperature: +85°C±2°C		
	Voltage applied: 1.3 X VR (d.c.)		
	Test duration: 1000 Hours		
	Capacitance change: ≤±5% DF change (@ tgδ): ≤50 X 10 <sup>-4</sup> at 1KHz Insulation resistance: ≥50% of initial limit		
High Temperature High Humidity	Test conditions & performance:		Test conditions & performance:
	Temperature: +85°C±2°C		Temperature: +85°C±2°C
	Relative humidity (RH): 85% ±2%		Relative humidity (RH): 85% ±2%
	Voltage applied: Rated Voltage		Voltage applied: Rated Voltage
	Test duration: 1000 Hours		Test duration: 2000 Hours
	Capacitance change: ≤±10%		Capacitance change: ≤±10%
	DF change (Δ tgδ): ≤80 X 10 <sup>-4</sup> at 1KHz Insulation resistance: ≥50% of initial limit		DF change (Δ tgδ): ≤80 X 10 <sup>-4</sup> at 1KHz Insulation resistance: ≥50% of initial limit
THB Test (Damp heat test with loading)	Test conditions & performance:		
	Temperature: +85°C±2°C Relative humidity (RH): 85% ±2%		
	Loading Voltage: Rated Voltage (DC)		
	Test duration: 1000 hours Capacitance change: ≤±5%		

# DC FILTERING

FB \*RoHS Compliant

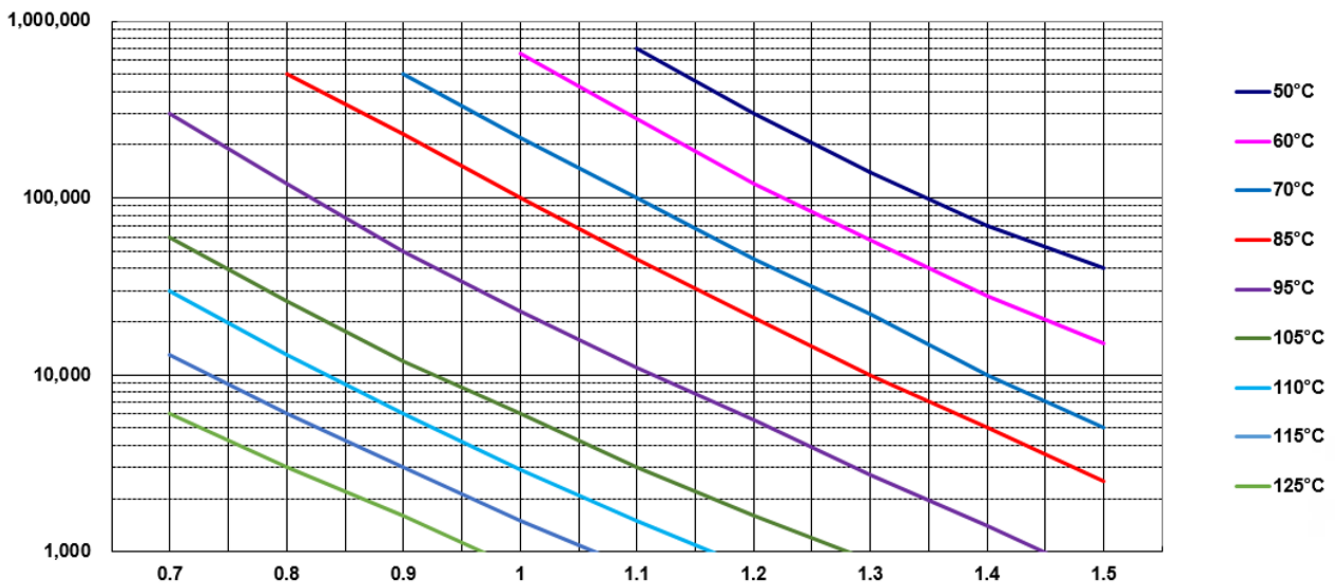


## Expected Life Curve at Hot Spot Temperature ( $T_{HS}$ )



For Standard & THB Grade IIIB - 105°C

## Expected Life Curve at Hot Spot Temperature ( $T_{HS}$ )



For THB 2000H - 125°C

# DC FILTERING

FB - Standard 105°C \*RoHS Compliant



## CASE CODE

Case Code	Dimensions									
	W ± 0.8(0.03)		H ± 0.8(0.03)		T ± 0.8(0.03)		P1 ± 1.0(0.04)		d ± 0.05(0.002)	
	mm	in	mm	in	mm	in	mm	in	mm	in
EC	32.0	(1.26)	18.0	(0.71)	9.0	(0.35)	27.5	(1.08)	0.8	(0.03)
E1	32.0	(1.26)	20.0	(0.79)	11.0	(0.43)	27.5	(1.08)	0.8	(0.03)
E2	32.0	(1.26)	22.0	(0.87)	13.0	(0.51)	27.5	(1.08)	0.8	(0.03)
EK	32.0	(1.26)	24.0	(0.94)	14.0	(0.55)	27.5	(1.08)	0.8	(0.03)
EJ	32.0	(1.26)	24.5	(0.96)	13.0	(0.51)	27.5	(1.08)	0.8	(0.03)
EE	32.0	(1.26)	24.5	(0.96)	15.0	(0.59)	27.5	(1.08)	0.8	(0.03)
E3	32.0	(1.26)	28.0	(1.10)	14.0	(0.55)	27.5	(1.08)	0.8	(0.03)
E4	32.0	(1.26)	28.0	(1.10)	18.0	(0.71)	27.5	(1.08)	0.8	(0.03)
EL	32.0	(1.26)	30.0	(1.18)	16.0	(0.63)	27.5	(1.08)	0.8	(0.03)
E6	32.0	(1.26)	33.0	(1.30)	18.0	(0.71)	27.5	(1.08)	0.8	(0.03)
E9	32.0	(1.26)	37.0	(1.46)	22.0	(0.87)	27.5	(1.08)	0.8	(0.03)
FV	42.0	(1.65)	28.0	(1.10)	17.0	(0.67)	37.5	(1.48)	1.0	(0.04)
FW	42.0	(1.65)	30.0	(1.18)	17.0	(0.67)	37.5	(1.48)	1.0	(0.04)
F3	42.0	(1.65)	32.0	(1.26)	19.0	(0.75)	37.5	(1.48)	1.0	(0.04)

## RATING & PART NUMBER REFERENCE

Cap uF	Rated Voltage V	KAVX PN	Voltage Code	Case Code	Dimensions					dv/dt V/us	Peak A	Irms A	ESR 10KHz mΩ	Rth °C/W	ESL nH	SPQ pcs	MOQ pcs	Estimated Weight g/pcs
					W ± 0.8	H ± 0.8	T ± 0.8	P1 ± 1.0	d ± 0.05									
					mm	mm	mm	mm	mm									
<b>Voltage Vndc 450V</b>																		
<b>Voltage Code I</b>																		
3.3	450	FB27EC6I0335KC	I	EC	32.0	18	9.0	27.5	0.8	65	215	4.0	30.7	41.7	12	180	4,320	7
4.0	450	FB27EC6I0405KC	I	EC	32.0	18	9.0	27.5	0.8	65	260	4.4	25.3	41.7	12	180	4,320	7
5.0	450	FB27E16I0505KC	I	E1	32.0	20	11	27.5	0.8	65	325	4.9	20.2	35.7	14	150	3,600	8
6.0	450	FB27E16I0605KC	I	E1	32.0	20	11	27.5	0.8	65	390	5.8	16.9	35.7	14	150	3,600	8
7.0	450	FB27E26I0705KC	I	E2	32.0	22	13	27.5	0.8	65	455	6.2	14.5	33.3	15	120	2,400	10
8.0	450	FB27E26I0805KC	I	E2	32.0	22	13	27.5	0.8	65	520	6.9	12.6	33.3	15	120	2,400	10
10.0	450	FB27EJ6I0106KC	I	EJ	32.0	24.5	13	27.5	0.8	65	650	8.0	10.1	31.3	16	120	2,400	12
12.0	450	FB27E36I0126KC	I	E3	32.0	28	14	27.5	0.8	65	780	9.0	8.4	27.8	18	110	2,200	16
13.0	450	FB27E36I0136KC	I	E3	32.0	28	14	27.5	0.8	65	845	9.3	7.8	27.8	18	110	2,200	16
15.0	450	FB27EL6I0156KC	I	EL	32.0	30	16	27.5	0.8	65	975	10.6	6.7	26.3	18	100	2,000	19
15.0	450	FB27E46I0156KC	I	E4	32.0	28	18	27.5	0.8	65	975	11.2	6.7	23.8	19	90	1,800	19
16.0	450	FB27E46I0166KC	I	E4	32.0	28	18	27.5	0.8	65	1040	11.5	6.3	23.8	19	90	1,800	19
18.0	450	FB27E66I0186KC	I	E6	32.0	33	18	27.5	0.8	65	1170	12.8	5.6	21.7	21	90	1,800	23
20.0	450	FB27E66I0206KC	I	E6	32.0	33	18	27.5	0.8	65	1300	13.5	5.1	21.7	21	90	1,800	23
22.0	450	FB27E96I0226KC	I	E9	32.0	37	22	27.5	0.8	65	1430	14.1	4.6	17.2	23	70	840	32
25.0	450	FB27E96I0256KC	I	E9	32.0	37	22	27.5	0.8	65	1625	16.9	4.0	17.2	23	70	840	32
28.0	450	FB27E96I0286KC	I	E9	32.0	37	22	27.5	0.8	65	1820	17.9	3.6	17.2	23	70	840	32
20.0	450	FB37FV6I0206KC	I	FV	42.0	28	17	37.5	1.0	35	700	8.5	13.8	20.0	12	63	2,520	26
25.0	450	FB37F36I0256KC	I	F3	42.0	32	19	37.5	1.0	35	875	9.5	11.1	17.9	13	56	2,240	31
<b>Voltage Vndc 500V</b>																		
<b>Voltage Code H</b>																		
3.3	500	FB27EC6H0335KC	H	EC	32.0	18.0	9.0	27.5	0.8	65	215	4.1	28.4	41.7	12	180	4,320	7
4.0	500	FB27EC6H0405KC	H	EC	32.0	18.0	9.0	27.5	0.8	65	260	4.5	23.4	41.7	12	180	4,320	7
5.0	500	FB27E16H0505KC	H	E1	32.0	20.0	11.0	27.5	0.8	65	325	5.5	18.7	35.7	14	150	3,600	8
6.0	500	FB27E16H0605KC	H	E1	32.0	20.0	11.0	27.5	0.8	65	390	6.0	15.6	35.7	14	150	3,600	8
7.0	500	FB27E26H0705KC	H	E2	32.0	22.0	13.0	27.5	0.8	65	455	6.7	13.4	33.3	15	120	2,400	10
8.0	500	FB27E26H0805KC	H	E2	32.0	22.0	13.0	27.5	0.8	65	520	7.2	11.7	33.3	15	120	2,400	10
10.0	500	FB27EJ6H0106KC	H	EJ	32.0	24.5	13.0	27.5	0.8	65	650	8.3	9.4	31.3	16	120	2,400	12
12.0	500	FB27E36H0126KC	H	E3	32.0	28.0	14.0	27.5	0.8	65	780	9.6	7.8	27.8	18	110	2,200	16
13.0	500	FB27E36H0136KC	H	E3	32.0	28.0	14.0	27.5	0.8	65	845	10.0	7.2	27.8	18	110	2,200	16
15.0	500	FB27EL6H0156KC	H	EL	32.0	30.0	16.0	27.5	0.8	65	975	11.0	6.2	26.3	18	100	2,000	19
15.0	500	FB27E46H0156KC	H	E4	32.0	28.0	18.0	27.5	0.8	65	975	11.0	6.2	23.8	19	90	1,800	19

# DC FILTERING

FB - Standard 105°C \*RoHS Compliant



## RATING & PART NUMBER REFERENCE

Cap uF	Rated Voltage V	KAVX PN	Voltage Code	Case Code	Dimensions					dv/dt V/us	Peak A	Irms A	ESR 10KHz mΩ	Rth °C/W	ESL nH	SPQ pcs	MOQ pcs	Estimated Weight g/pcs
					W ± 0.8 mm	H ± 0.8 mm	T ± 0.8 mm	P1 ± 1.0 mm	d ± 0.05 mm									
16.0	500	FB27E46H0166KC	H	E4	32.0	28.0	18.0	27.5	0.8	65	1040	12.0	5.9	23.8	19	90	1,800	19
18.0	500	FB27E66H0186KC	H	E6	32.0	33.0	18.0	27.5	0.8	65	1170	13.3	5.2	21.7	21	90	1,800	23
20.0	500	FB27E66H0206KC	H	E6	32.0	33.0	18.0	27.5	0.8	65	1300	14.0	4.7	21.7	21	90	1,800	23
22.0	500	FB27E96H0226KC	H	E9	32.0	37.0	22.0	27.5	0.8	65	1430	16.5	4.3	17.2	23	70	840	32
25.0	500	FB27E96H0256KC	H	E9	32.0	37.0	22.0	27.5	0.8	65	1625	17.6	3.7	17.2	23	70	840	32
28.0	500	FB27E96H0286KC	H	E9	32.0	37.0	22.0	27.5	0.8	65	1820	18.6	3.3	17.2	23	70	840	32
20.0	500	FB37FV6H0206KC	H	FV	42.0	28.0	17.0	37.5	1.0	35	700	8.8	12.8	20.0	12	63	2,520	26
25.0	500	FB37F36H0256KC	H	F3	42.0	32.0	19.0	37.5	1.0	35	875	10.5	10.2	17.9	13	56	2,240	31
<b>Voltage Vndc 550V</b>																		
<b>Voltage Code J</b>																		
3.0	550	FB27EC6J0305KC	J	EC	32.0	18.0	9.0	27.5	0.8	65	195	4.1	28.1	41.7	12	180	4,320	7
4.0	550	FB27E16J0405KC	J	E1	32.0	20.0	11.0	27.5	0.8	65	260	5.2	21.1	35.7	14	150	3,600	8
5.0	550	FB27E26J0505KC	J	E2	32.0	22.0	13.0	27.5	0.8	65	325	6.0	16.9	33.3	15	120	2,400	10
6.0	550	FB27E26J0605KC	J	E2	32.0	22.0	13.0	27.5	0.8	65	390	6.5	14.0	33.3	15	120	2,400	10
7.0	550	FB27EK6J0705KC	J	EK	32.0	24.0	14.0	27.5	0.8	65	455	7.5	12.0	29.4	17	110	2,200	13
8.0	550	FB27EK6J0805KC	J	EK	32.0	24.0	14.0	27.5	0.8	65	520	8.0	10.5	29.4	17	110	2,200	13
9.0	550	FB27E36J0905KC	J	E3	32.0	28.0	14.0	27.5	0.8	65	585	8.8	9.4	27.8	18	110	2,200	16
10.0	550	FB27E36J0106KC	J	E3	32.0	28.0	14.0	27.5	0.8	65	650	9.2	8.4	27.8	18	110	2,200	16
12.0	550	FB27EL6J0126KC	J	EL	32.0	30.0	16.0	27.5	0.8	65	780	10.4	7.0	26.3	18	100	2,000	19
12.0	550	FB27E46J0126KC	J	E4	32.0	28.0	18.0	27.5	0.8	65	780	10.9	7.0	23.8	19	90	1,800	19
15.0	550	FB27E66J0156KC	J	E6	32.0	33.0	18.0	27.5	0.8	65	975	12.8	5.6	21.7	21	90	1,800	23
20.0	550	FB27E96J0206KC	J	E9	32.0	37.0	22.0	27.5	0.8	65	1300	16.6	4.2	17.2	23	70	840	32
22.0	550	FB27E96J0226KC	J	E9	32.0	37.0	22.0	27.5	0.8	65	1430	17.4	3.8	17.2	23	70	840	32
<b>Voltage Vndc 600V</b>																		
<b>Voltage Code Q</b>																		
2.0	600	FB27EC6Q0205KC	Q	EC	32.0	18.0	9.0	27.5	0.8	65	130	3.6	36.1	41.7	12	180	4,320	7
2.2	600	FB27EC6Q0225KC	Q	EC	32.0	18.0	9.0	27.5	0.8	65	143	3.8	32.8	41.7	12	180	4,320	7
3.0	600	FB27E16Q0305KC	Q	E1	32.0	20.0	11.0	27.5	0.8	65	195	4.8	24.1	35.7	14	150	3,600	8
3.3	600	FB27E16Q0335KC	Q	E1	32.0	20.0	11.0	27.5	0.8	65	215	5.1	21.9	35.7	14	150	3,600	8
4.0	600	FB27E16Q0405KC	Q	E1	32.0	20.0	11.0	27.5	0.8	65	260	5.6	18.1	35.7	14	150	3,600	8
5.0	600	FB27E26Q0505KC	Q	E2	32.0	22.0	13.0	27.5	0.8	65	325	6.4	14.5	33.3	15	120	2,400	10
6.0	600	FB27EJ6Q0605KC	Q	EJ	32.0	24.5	13.0	27.5	0.8	65	390	7.3	12.0	31.3	16	120	2,400	12
7.0	600	FB27EE6Q0705KC	Q	EE	32.0	24.5	15.0	27.5	0.8	65	455	8.2	10.3	28.6	18	110	2,200	13
7.0	600	FB27E36Q0705KC	Q	E3	32.0	28.0	14.0	27.5	0.8	65	455	8.4	10.3	27.8	18	110	2,200	16
8.0	600	FB27E36Q0805KC	Q	E3	32.0	28.0	14.0	27.5	0.8	65	520	8.9	9.0	27.8	18	110	2,200	16
9.0	600	FB27EL6Q0905KC	Q	EL	32.0	30.0	16.0	27.5	0.8	65	585	9.7	8.0	26.3	18	100	2,000	19
10.0	600	FB27E46Q0106KC	Q	E4	32.0	28.0	18.0	27.5	0.8	65	650	10.8	7.2	23.8	19	90	1,800	19
11.0	600	FB27E66Q0116KC	Q	E6	32.0	33.0	18.0	27.5	0.8	65	715	11.8	6.6	21.7	21	90	1,800	23
12.0	600	FB27E66Q0126KC	Q	E6	32.0	33.0	18.0	27.5	0.8	65	780	12.4	6.0	21.7	21	90	1,800	23
15.0	600	FB27E96Q0156KC	Q	E9	32.0	37.0	22.0	27.5	0.8	65	975	15.5	4.8	17.2	23	70	840	32
18.0	600	FB27E96Q0186KC	Q	E9	32.0	37.0	22.0	27.5	0.8	65	1170	17.0	4.0	17.2	23	70	840	32
15.0	600	FB37F36Q0156KC	Q	F3	42.0	32.0	19.0	37.5	1.0	35	525	9.2	13.2	17.9	13	56	2,240	31
<b>Voltage Vndc 700V</b>																		
<b>Voltage Code A</b>																		
2.0	700	FB27EC6A0205KC	A	EC	32.0	18.0	9.0	27.5	0.8	65	130	3.6	36.1	41.7	12	180	4,320	7
3.0	700	FB27E16A0305KC	A	E1	32.0	20.0	11.0	27.5	0.8	65	195	4.8	24.1	35.7	14	150	3,600	8
3.3	700	FB27E16A0335KC	A	E1	32.0	20.0	11.0	27.5	0.8	65	215	5.1	21.9	35.7	14	150	3,600	8
4.0	700	FB27E16A0405KC	A	E1	32.0	20.0	11.0	27.5	0.8	65	260	5.6	18.1	35.7	14	150	3,600	8
5.0	700	FB27E26A0505KC	A	E2	32.0	22.0	13.0	27.5	0.8	65	325	6.4	14.5	33.3	15	120	2,400	10
6.0	700	FB27EJ6A0605KC	A	EJ	32.0	24.5	13.0	27.5	0.8	65	390	7.3	12.0	31.3	16	120	2,400	12
7.0	700	FB27EE6A0705KC	A	EE	32.0	24.5	15.0	27.5	0.8	65	455	8.2	10.3	28.6	18	110	2,200	13
7.0	700	FB27E36A0705KC	A	E3	32.0	28.0	14.0	27.5	0.8	65	455	8.2	10.3	27.8	18	110	2,200	16
8.0	700	FB27E36A0805KC	A	E3	32.0	28.0	14.0	27.5	0.8	65	520	8.9	9.0	27.8	18	110	2,200	16
9.0	700	FB27EL6A0905KC	A	EL	32.0	30.0	16.0	27.5	0.8	65	585	9.7	8.0	26.3	18	100	2,000	19
10.0	700	FB27E46A0106KC	A	E4	32.0	28.0	18.0	27.5	0.8	65	650	10.8	7.2	23.8	19	90	1,800	19
11.0	700	FB27E66A0116KC	A	E6	32.0	33.0	18.0	27.5	0.8	65	715	11.8	6.6	21.7	21	90	1,800	23
12.0	700	FB27E66A0126KC	A	E6	32.0	33.0	18.0	27.5	0.8	65	780	12.4	6.0	21.7	21	90	1,800	23
15.0	700	FB27E96A0156KC	A	E9	32.0	37.0	22.0	27.5	0.8	65	975	15.5	4.8	17.2	23	70	840	32

# DC FILTERING

FB - Standard 105°C \*RoHS Compliant



## RATING & PART NUMBER REFERENCE

Cap	Rated Voltage	KAVX PN	Voltage Code	Case Code	Dimensions					dv/dt	Peak	I <sub>rms</sub>	ESR 10KHz	R <sub>th</sub>	ESL	SPQ	MOQ	Estimated Weight
					W ± 0.8	H ± 0.8	T ± 0.8	P1 ± 1.0	d ± 0.05									
µF	V				mm	mm	mm	mm	mm	V/us	A	A	mΩ	°C/W	nH	pcs	pcs	g/pcs
18.0	700	FB27E96A0186KC	A	E9	32.0	37.0	22.0	27.5	0.8	65	1170	17.0	4.0	17.2	23	70	840	32
15.0	700	FB37F36A0156KC	A	F3	42.0	32.0	19.0	37.5	1.0	35	525	9.2	13.2	17.9	13	56	2,240	31
<b>Voltage Vndc 800V</b>																		
<b>Voltage Code B</b>																		
2.0	800	FB27EC6B0205KC	B	EC	32.0	18.0	9.0	27.5	0.8	65	130	3.9	31.6	41.7	12	180	4,320	7
3.0	800	FB27E16B0305KC	B	E1	32.0	20.0	11.0	27.5	0.8	65	195	5.2	21.1	35.7	14	150	3,600	8
4.0	800	FB27EJ6B0405KC	B	EJ	32.0	24.5	13.0	27.5	0.8	65	260	6.4	15.8	31.3	16	120	2,400	12
5.0	800	FB27EK6B0505KC	B	EK	32.0	24.0	14.0	27.5	0.8	65	325	7.3	12.6	29.4	17	110	2,200	13
5.0	800	FB27E36B0505KC	B	E3	32.0	28.0	14.0	27.5	0.8	65	325	7.5	12.6	27.8	18	110	2,200	16
5.0	800	FB27EE6B0505KC	B	EE	32.0	24.5	15.0	27.5	0.8	65	325	7.4	12.6	28.6	18	110	2,200	13
6.0	800	FB27EL6B0605KC	B	EL	32.0	30.0	16.0	27.5	0.8	65	390	8.5	10.5	26.3	18	100	2,000	19
7.0	800	FB27EL6B0705KC	B	EL	32.0	30.0	16.0	27.5	0.8	65	455	9.2	9.0	26.3	18	100	2,000	19
8.0	800	FB27E46B0805KC	B	E4	32.0	28.0	18.0	27.5	0.8	65	520	10.3	7.9	23.8	19	90	1,800	19
9.0	800	FB27E66B0905KC	B	E6	32.0	33.0	18.0	27.5	0.8	65	585	11.4	7.0	21.7	21	90	1,800	23
10.0	800	FB27E66B0106KC	B	E6	32.0	33.0	18.0	27.5	0.8	65	650	12.1	6.3	21.7	21	90	1,800	23
12.0	800	FB27E96B0126KC	B	E9	32.0	37.0	22.0	27.5	0.8	65	780	14.8	5.3	17.2	23	70	840	32
14.0	800	FB27E96B0146KC	B	E9	32.0	37.0	22.0	27.5	0.8	65	910	16.0	4.5	17.2	23	70	840	32
14.0	800	FB37F36B0146KC	B	F3	42.0	32.0	19.0	37.5	1.0	35	490	9.5	12.3	17.9	13	56	2,240	31
<b>Voltage Vndc 900V</b>																		
<b>Voltage Code C</b>																		
1.0	900	FB27EC6C0105KC	C	EC	32.0	18.0	9.0	27.5	0.8	65	65	2.9	56.2	41.7	12	180	4,320	7
2.0	900	FB27E16C0205KC	C	E1	32.0	20.0	11.0	27.5	0.8	65	130	4.5	28.1	35.7	14	150	3,600	8
2.5	900	FB27E26C0255KC	C	E2	32.0	22.0	13.0	27.5	0.8	65	163	5.2	22.5	33.3	15	120	2,400	10
3.0	900	FB27E26C0305KC	C	E2	32.0	22.0	13.0	27.5	0.8	65	195	5.7	18.7	33.3	15	120	2,400	10
3.5	900	FB27EJ6C0355KC	C	EJ	32.0	24.5	13.0	27.5	0.8	65	228	6.3	16.1	31.3	16	120	2,400	12
4.0	900	FB27EE6C0405KC	C	EE	32.0	24.5	15.0	27.5	0.8	65	260	7.1	14.0	28.6	18	110	2,200	13
4.5	900	FB27E36C0455KC	C	E3	32.0	28.0	14.0	27.5	0.8	65	293	7.6	12.5	27.8	18	110	2,200	16
5.5	900	FB27EL6C0555KC	C	EL	32.0	30.0	16.0	27.5	0.8	65	358	8.6	10.2	26.3	18	100	2,000	19
6.0	900	FB27E46C0605KC	C	E4	32.0	28.0	18.0	27.5	0.8	65	390	9.5	9.4	23.8	19	90	1,800	19
7.0	900	FB27E66C0705KC	C	E6	32.0	33.0	18.0	27.5	0.8	65	455	10.7	8.0	21.7	21	90	1,800	23
9.0	900	FB27E96C0905KC	C	E9	32.0	37.0	22.0	27.5	0.8	65	585	13.6	6.2	17.2	23	70	840	32
10.0	900	FB27E96C0106KC	C	E9	32.0	37.0	22.0	27.5	0.8	65	650	14.4	5.6	17.2	23	70	840	32
10.0	900	FB37F36C0106KC	C	F3	42.0	32.0	19.0	37.5	1.0	35	350	8.5	15.4	17.9	13	56	2,240	31
<b>Voltage Vndc 1000V</b>																		
<b>Voltage Code K</b>																		
1.0	1000	FB27EC6K0105KC	K	EC	32.0	18.0	9.0	27.5	0.8	65	65	3.1	50.6	41.7	12	180	4,320	7
1.8	1000	FB27E16K0185KC	K	E1	32.0	20.0	11.0	27.5	0.8	65	117	4.5	28.1	35.7	14	150	3,600	8
2.0	1000	FB27E26K0205KC	K	E2	32.0	22.0	13.0	27.5	0.8	65	130	4.9	25.3	33.3	15	120	2,400	10
2.2	1000	FB27E26K0225KC	K	E2	32.0	22.0	13.0	27.5	0.8	65	143	5.1	23.0	33.3	15	120	2,400	10
3.0	1000	FB27EK6K0305KC	K	EK	32.0	24.0	14.0	27.5	0.8	65	195	6.4	16.9	29.4	17	110	2,200	13
3.3	1000	FB27E36K0335KC	K	E3	32.0	28.0	14.0	27.5	0.8	65	215	6.9	15.3	27.8	18	110	2,200	16
4.0	1000	FB27EL6K0405KC	K	EL	32.0	30.0	16.0	27.5	0.8	65	260	7.8	12.6	26.3	18	100	2,000	19
5.0	1000	FB27E46K0505KC	K	E4	32.0	28.0	18.0	27.5	0.8	65	325	9.1	10.1	23.8	19	90	1,800	19
6.0	1000	FB27E66K0605KC	K	E6	32.0	33.0	18.0	27.5	0.8	65	390	10.4	8.4	21.7	21	90	1,800	23
7.0	1000	FB27E96K0705KC	K	E9	32.0	37.0	22.0	27.5	0.8	65	455	12.7	7.2	17.2	23	70	840	32
8.0	1000	FB27E96K0805KC	K	E9	32.0	37.0	22.0	27.5	0.8	65	520	13.5	6.3	17.2	23	70	840	32
7.0	1000	FB37FW6K0705KC	K	FW	42.0	30.0	17.0	37.5	1.0	35	245	7.3	19.8	19.2	12	63	2,520	27
8.0	1000	FB37F36K0805KC	K	F3	42.0	32.0	19.0	37.5	1.0	35	280	8.0	17.3	17.9	13	56	2,240	31
<b>Voltage Vndc 1100V</b>																		
<b>Voltage Code L</b>																		
1.0	1100	FB27EC6L0105KC	L	EC	32.0	18.0	9.0	27.5	0.8	65	65	3.2	46.0	41.7	12	180	4,320	7
1.5	1100	FB27E16L0155KC	L	E1	32.0	20.0	11.0	27.5	0.8	65	98	4.3	30.7	35.7	14	150	3,600	8
2.0	1100	FB27E26L0205KC	L	E2	32.0	22.0	13.0	27.5	0.8	65	130	5.1	23.0	33.3	15	120	2,400	10
2.2	1100	FB27EJ6L0225KC	L	EJ	32.0	24.5	13.0	27.5	0.8	65	143	5.5	20.9	31.3	16	120	2,400	12
3.0	1100	FB27E36L0305KC	L	E3	32.0	28.0	14.0	27.5	0.8	65	195	6.9	15.3	27.8	18	110	2,200	16
3.3	1100	FB27EL6L0335KC	L	EL	32.0	30.0	16.0	27.5	0.8	65	215	7.4	13.9	26.3	18	100	2,000	19
4.0	1100	FB27E46L0405KC	L	E4	32.0	28.0	18.0	27.5	0.8	65	260	8.5	11.5	23.8	19	90	1,800	19
4.5	1100	FB27E66L0455KC	L	E6	32.0	33.0	18.0	27.5	0.8	65	293	9.5	10.2	21.7	21	90	1,800	23
5.0	1100	FB27E66L0505KC	L	E6	32.0	33.0	18.0	27.5	0.8	65	325	10.0	9.2	21.7	21	90	1,800	23

# DC FILTERING

FB - Standard 105°C \*RoHS Compliant



## RATING & PART NUMBER REFERENCE

Cap	Rated Voltage	KAVX PN	Voltage Code	Case Code	Dimensions					dv/dt	Peak	I <sub>rms</sub>	ESR 10KHz	R <sub>th</sub>	ESL	SPQ	MOQ	Estimated Weight
					W ± 0.8	H ± 0.8	T ± 0.8	P1 ± 1.0	d ± 0.05									
uF	V				mm	mm	mm	mm	mm	V/us	A	A	mΩ	°C/W	nH	pcs	pcs	g/pcs
6.0	1100	FB27E96L0605KC	L	E9	32.0	37.0	22.0	27.5	0.8	65	390	12.3	7.7	17.2	23	70	840	32
7.0	1100	FB27E96L0705KC	L	E9	32.0	37.0	22.0	27.5	0.8	65	455	13.3	6.6	17.2	23	70	840	32
7.0	1100	FB37F36L0705KC	L	F3	42.0	32.0	19.0	37.5	1.0	35	245	7.9	18.0	17.9	13	56	2,240	31
<b>Voltage V<sub>ndc</sub> 1200V</b>					<b>Voltage Code P</b>													
1.0	1200	FB27E16P0105KC	P	E1	32.0	20.0	11.0	27.5	0.8	65	65	3.8	39.1	35.7	14	150	3,600	8
1.2	1200	FB27E16P0125KC	P	E1	32.0	20.0	11.0	27.5	0.8	65	78	4.0	35.1	35.7	14	150	3,600	8
1.5	1200	FB27E26P0155KC	P	E2	32.0	22.0	13.0	27.5	0.8	65	98	4.6	28.1	33.3	15	120	2,400	10
2.0	1200	FB27EJ6P0205KC	P	EJ	32.0	24.5	13.0	27.5	0.8	65	130	5.5	21.1	31.3	16	120	2,400	12
2.2	1200	FB27E36P0225KC	P	E3	32.0	28.0	14.0	27.5	0.8	65	143	6.1	19.2	27.8	18	110	2,200	16
3.0	1200	FB27EL6P0305KC	P	EL	32.0	30.0	16.0	27.5	0.8	65	195	7.4	14.0	26.3	18	100	2,000	19
3.3	1200	FB27E46P0335KC	P	E4	32.0	28.0	18.0	27.5	0.8	65	215	8.1	12.8	23.8	19	90	1,800	19
4.0	1200	FB27E66P0405KC	P	E6	32.0	33.0	18.0	27.5	0.8	65	260	9.3	10.5	21.7	21	90	1,800	23
5.0	1200	FB27E96P0505KC	P	E9	32.0	37.0	22.0	27.5	0.8	65	325	11.7	8.4	17.2	23	70	840	32
4.5	1200	FB37FW6P0455KC	P	FW	42.0	30.0	17.0	37.5	1.0	35	158	6.4	25.6	19.2	12	63	2,520	27
5.5	1200	FB37F36P0555KC	P	F3	42.0	32.0	19.0	37.5	1.0	35	193	7.3	20.9	17.9	13	56	2,240	31

# DC FILTERING

FB - THB Grade IIIB - 105°C \*RoHS Compliant



## CASE CODE

Case Code	Dimensions									
	W ± 0.8(0.03)		H ± 0.8(0.03)		T ± 0.8(0.03)		P1 ± 1.0(0.04)		d ± 0.05(0.002)	
	mm	in	mm	in	mm	in	mm	in	mm	in
EC	32.0	(1.26)	18.0	(0.71)	9.0	(0.35)	27.5	(1.08)	0.8	(0.03)
E1	32.0	(1.26)	20.0	(0.79)	11.0	(0.43)	27.5	(1.08)	0.8	(0.03)
E2	32.0	(1.26)	22.0	(0.87)	13.0	(0.51)	27.5	(1.08)	0.8	(0.03)
EK	32.0	(1.26)	24.0	(0.94)	14.0	(0.55)	27.5	(1.08)	0.8	(0.03)
EJ	32.0	(1.26)	24.5	(0.96)	13.0	(0.51)	27.5	(1.08)	0.8	(0.03)
EE	32.0	(1.26)	24.5	(0.96)	15.0	(0.59)	27.5	(1.08)	0.8	(0.03)
E3	32.0	(1.26)	28.0	(1.10)	14.0	(0.55)	27.5	(1.08)	0.8	(0.03)
E4	32.0	(1.26)	28.0	(1.10)	18.0	(0.71)	27.5	(1.08)	0.8	(0.03)
EL	32.0	(1.26)	30.0	(1.18)	16.0	(0.63)	27.5	(1.08)	0.8	(0.03)
E6	32.0	(1.26)	33.0	(1.30)	18.0	(0.71)	27.5	(1.08)	0.8	(0.03)
E9	32.0	(1.26)	37.0	(1.46)	22.0	(0.87)	27.5	(1.08)	0.8	(0.03)
FV	42.0	(1.65)	28.0	(1.10)	17.0	(0.67)	37.5	(1.48)	1.0	(0.04)
FW	42.0	(1.65)	30.0	(1.18)	17.0	(0.67)	37.5	(1.48)	1.0	(0.04)
F3	42.0	(1.65)	32.0	(1.26)	19.0	(0.75)	37.5	(1.48)	1.0	(0.04)

## RATING & PART NUMBER REFERENCE

Cap uF	Rated Voltage V	KAVX PN	Voltage Code	Case Code	Dimensions					dv/dt V/us	Peak A	Irms A	ESR 10KHz mΩ	Rth °C/W	ESL nH	SPQ pcs	MOQ pcs	Estimated Weight g/pcs
					W ± 0.8 mm	H ± 0.8 mm	T ± 0.8 mm	P1 ± 1.0 mm	d ± 0.05 mm									
<b>Voltage Vndc 450V</b>																		
<b>Voltage Code I</b>																		
3.3	450	FB27EC7I0335KC	I	EC	32.0	18	9.0	27.5	0.8	65	215	4.0	30.7	41.7	12	180	4,320	7
4.0	450	FB27EC7I0405KC	I	EC	32.0	18	9.0	27.5	0.8	65	260	4.4	25.3	41.7	12	180	4,320	7
5.0	450	FB27E17I0505KC	I	E1	32.0	20	11.0	27.5	0.8	65	325	4.9	20.2	35.7	14	150	3,600	8
6.0	450	FB27E17I0605KC	I	E1	32.0	20	11.0	27.5	0.8	65	390	5.8	16.9	35.7	14	150	3,600	8
7.0	450	FB27E27I0705KC	I	E2	32.0	22	13.0	27.5	0.8	65	455	6.2	14.5	33.3	15	120	2,400	10
8.0	450	FB27E27I0805KC	I	E2	32.0	22	13.0	27.5	0.8	65	520	6.9	12.6	33.3	15	120	2,400	10
10.0	450	FB27EJ7I0106KC	I	EJ	32.0	24.5	13.0	27.5	0.8	65	650	8.0	10.1	31.3	16	120	2,400	12
12.0	450	FB27E37I0126KC	I	E3	32.0	28	14.0	27.5	0.8	65	780	9.0	8.4	27.8	18	110	2,200	16
13.0	450	FB27E37I0136KC	I	E3	32.0	28	14.0	27.5	0.8	65	845	9.3	7.8	27.8	18	110	2,200	16
15.0	450	FB27EL7I0156KC	I	EL	32.0	30	16.0	27.5	0.8	65	975	10.6	6.7	26.3	18	100	2,000	19
15.0	450	FB27E47I0156KC	I	E4	32.0	28	18.0	27.5	0.8	65	975	11.2	6.7	23.8	19	90	1,800	19
16.0	450	FB27E47I0166KC	I	E4	32.0	28	18.0	27.5	0.8	65	1040	11.5	6.3	23.8	19	90	1,800	19
18.0	450	FB27E67I0186KC	I	E6	32.0	33	18.0	27.5	0.8	65	1170	12.8	5.6	21.7	21	90	1,800	23
20.0	450	FB27E67I0206KC	I	E6	32.0	33	18.0	27.5	0.8	65	1300	13.5	5.1	21.7	21	90	1,800	23
22.0	450	FB27E97I0226KC	I	E9	32.0	37	22.0	27.5	0.8	65	1430	14.1	4.6	17.2	23	70	840	32
25.0	450	FB27E97I0256KC	I	E9	32.0	37	22.0	27.5	0.8	65	1625	16.9	4.0	17.2	23	70	840	32
28.0	450	FB27E97I0286KC	I	E9	32.0	37	22.0	27.5	0.8	65	1820	17.9	3.6	17.2	23	70	840	32
20.0	450	FB37FV7I0206KC	I	FV	42.0	28	17.0	37.5	1.0	35	700	8.5	13.8	20.0	12	63	2,520	26
25.0	450	FB37F37I0256KC	I	F3	42.0	32	19.0	37.5	1.0	35	875	9.5	11.1	17.9	13	56	2,240	31
<b>Voltage Vndc 500V</b>																		
<b>Voltage Code H</b>																		
3.3	500	FB27EC7H0335KC	H	EC	32.0	18	9.0	27.5	0.8	65	215	4.1	28.4	41.7	12	180	4,320	7
4.0	500	FB27EC7H0405KC	H	EC	32.0	18	9.0	27.5	0.8	65	260	4.5	23.4	41.7	12	180	4,320	7
5.0	500	FB27E17H0505KC	H	E1	32.0	20	11.0	27.5	0.8	65	325	5.5	18.7	35.7	14	150	3,600	8
6.0	500	FB27E17H0605KC	H	E1	32.0	20	11.0	27.5	0.8	65	390	6.0	15.6	35.7	14	150	3,600	8
7.0	500	FB27E27H0705KC	H	E2	32.0	22	13.0	27.5	0.8	65	455	6.7	13.4	33.3	15	120	2,400	10
8.0	500	FB27E27H0805KC	H	E2	32.0	22	13.0	27.5	0.8	65	520	7.2	11.7	33.3	15	120	2,400	10
10.0	500	FB27EJ7H0106KC	H	EJ	32.0	24.5	13.0	27.5	0.8	65	650	8.3	9.4	31.3	16	120	2,400	12
12.0	500	FB27E37H0126KC	H	E3	32.0	28	14.0	27.5	0.8	65	780	9.6	7.8	27.8	18	110	2,200	16
13.0	500	FB27E37H0136KC	H	E3	32.0	28	14.0	27.5	0.8	65	845	10.0	7.2	27.8	18	110	2,200	16

# DC FILTERING

FB - THB Grade IIIB - 105°C \*RoHS Compliant



## RATING & PART NUMBER REFERENCE

Cap	Rated Voltage	KAVX PN	Voltage Code	Case Code	Dimensions					dv/dt	Peak	I <sub>rms</sub>	ESR 10KHz	R <sub>th</sub>	ESL	SPQ	MOQ	Estimated Weight
					W	H	T	P1	d									
					± 0.8	± 0.8	± 0.8	± 1.0	± 0.05									
µF	V				mm	mm	mm	mm	mm	V/us	A	A	mΩ	°C/W	nH	pcs	pcs	g/pcs
15.0	500	FB27EL7H0156KC	H	EL	32.0	30	16.0	27.5	0.8	65	975	11.0	6.2	26.3	18	100	2,000	19
15.0	500	FB27E47H0156KC	H	E4	32.0	28	18.0	27.5	0.8	65	975	11.0	6.2	23.8	19	90	1,800	19
16.0	500	FB27E47H0166KC	H	E4	32.0	28	18.0	27.5	0.8	65	1040	12.0	5.9	23.8	19	90	1,800	19
18.0	500	FB27E67H0186KC	H	E6	32.0	33	18.0	27.5	0.8	65	1170	13.3	5.2	21.7	21	90	1,800	23
20.0	500	FB27E67H0206KC	H	E6	32.0	33	18.0	27.5	0.8	65	1300	14.0	4.7	21.7	21	90	1,800	23
22.0	500	FB27E97H0226KC	H	E9	32.0	37	22.0	27.5	0.8	65	1430	16.5	4.3	17.2	23	70	840	32
25.0	500	FB27E97H0256KC	H	E9	32.0	37	22.0	27.5	0.8	65	1625	17.6	3.7	17.2	23	70	840	32
28.0	500	FB27E97H0286KC	H	E9	32.0	37	22.0	27.5	0.8	65	1820	18.6	3.3	17.2	23	70	840	32
20.0	500	FB37FV7H0206KC	H	FV	42.0	28	17.0	37.5	1.0	35	700	8.8	12.8	20.0	12	63	2,520	26
25.0	500	FB37F37H0256KC	H	F3	42.0	32	19.0	37.5	1.0	35	875	10.5	10.2	17.9	13	56	2,240	31
<b>Voltage Vndc 550V</b>																		
<b>Voltage Code J</b>																		
3.0	550	FB27EC7J0305KC	J	EC	32.0	18	9.0	27.5	0.8	65	195	4.1	28.1	41.7	12	180	4,320	7
4.0	550	FB27E17J0405KC	J	E1	32.0	20	11.0	27.5	0.8	65	260	5.2	21.1	35.7	14	150	3,600	8
5.0	550	FB27E27J0505KC	J	E2	32.0	22	13.0	27.5	0.8	65	325	6.0	16.9	33.3	15	120	2,400	10
6.0	550	FB27E27J0605KC	J	E2	32.0	22	13.0	27.5	0.8	65	390	6.5	14.0	33.3	15	120	2,400	10
7.0	550	FB27EK7J0705KC	J	EK	32.0	24	14.0	27.5	0.8	65	455	7.5	12.0	29.4	17	110	2,200	13
8.0	550	FB27EK7J0805KC	J	EK	32.0	24	14.0	27.5	0.8	65	520	8.0	10.5	29.4	17	110	2,200	13
9.0	550	FB27E37J0905KC	J	E3	32.0	28	14.0	27.5	0.8	65	585	8.8	9.4	27.8	18	110	2,200	16
10.0	550	FB27E37J0106KC	J	E3	32.0	28	14.0	27.5	0.8	65	650	9.2	8.4	27.8	18	110	2,200	16
12.0	550	FB27EL7J0126KC	J	EL	32.0	30	16.0	27.5	0.8	65	780	10.4	7.0	26.3	18	100	2,000	19
12.0	550	FB27E47J0126KC	J	E4	32.0	28	18.0	27.5	0.8	65	780	10.9	7.0	23.8	19	90	1,800	19
15.0	550	FB27E67J0156KC	J	E6	32.0	33	18.0	27.5	0.8	65	975	12.8	5.6	21.7	21	90	1,800	23
20.0	550	FB27E97J0206KC	J	E9	32.0	37	22.0	27.5	0.8	65	1300	16.6	4.2	17.2	23	70	840	32
22.0	550	FB27E97J0226KC	J	E9	32.0	37	22.0	27.5	0.8	65	1430	17.4	3.8	17.2	23	70	840	32
<b>Voltage Vndc 600V</b>																		
<b>Voltage Code Q</b>																		
2.0	600	FB27EC7Q0205KC	Q	EC	32.0	18	9.0	27.5	0.8	65	130	3.6	36.1	41.7	12	180	4,320	7
2.2	600	FB27EC7Q0225KC	Q	EC	32.0	18	9.0	27.5	0.8	65	143	3.8	32.8	41.7	12	180	4,320	7
3.0	600	FB27E17Q0305KC	Q	E1	32.0	20	11.0	27.5	0.8	65	195	4.8	24.1	35.7	14	150	3,600	8
3.3	600	FB27E17Q0335KC	Q	E1	32.0	20	11.0	27.5	0.8	65	215	5.1	21.9	35.7	14	150	3,600	8
4.0	600	FB27E17Q0405KC	Q	E1	32.0	20	11.0	27.5	0.8	65	260	5.6	18.1	35.7	14	150	3,600	8
5.0	600	FB27E27Q0505KC	Q	E2	32.0	22	13.0	27.5	0.8	65	325	6.4	14.5	33.3	15	120	2,400	10
6.0	600	FB27EJ7Q0605KC	Q	EJ	32.0	24.5	13.0	27.5	0.8	65	390	7.3	12.0	31.3	16	120	2,400	12
7.0	600	FB27EE7Q0705KC	Q	EE	32.0	24.5	15.0	27.5	0.8	65	455	8.2	10.3	28.6	18	110	2,200	13
7.0	600	FB27E37Q0705KC	Q	E3	32.0	28	14.0	27.5	0.8	65	455	8.4	10.3	27.8	18	110	2,200	16
8.0	600	FB27E37Q0805KC	Q	E3	32.0	28	14.0	27.5	0.8	65	520	8.9	9.0	27.8	18	110	2,200	16
9.0	600	FB27EL7Q0905KC	Q	EL	32.0	30	16.0	27.5	0.8	65	585	9.7	8.0	26.3	18	100	2,000	19
10.0	600	FB27E47Q0106KC	Q	E4	32.0	28	18.0	27.5	0.8	65	650	10.8	7.2	23.8	19	90	1,800	19
11.0	600	FB27E67Q0116KC	Q	E6	32.0	33	18.0	27.5	0.8	65	715	11.8	6.6	21.7	21	90	1,800	23
12.0	600	FB27E67Q0126KC	Q	E6	32.0	33	18.0	27.5	0.8	65	780	12.4	6.0	21.7	21	90	1,800	23
15.0	600	FB27E97Q0156KC	Q	E9	32.0	37	22.0	27.5	0.8	65	975	15.5	4.8	17.2	23	70	840	32
18.0	600	FB27E97Q0186KC	Q	E9	32.0	37	22.0	27.5	0.8	65	1170	17.0	4.0	17.2	23	70	840	32
15.0	600	FB37F37Q0156KC	Q	F3	42.0	32	19.0	37.5	1.0	35	525	9.2	13.2	17.9	13	56	2,240	31
<b>Voltage Vndc 700V</b>																		
<b>Voltage Code A</b>																		
2.0	700	FB27EC7A0205KC	A	EC	32.0	18	9.0	27.5	0.8	65	130	3.6	36.1	41.7	12	180	4,320	7
3.0	700	FB27E17A0305KC	A	E1	32.0	20	11.0	27.5	0.8	65	195	4.8	24.1	35.7	14	150	3,600	8
3.3	700	FB27E17A0335KC	A	E1	32.0	20	11.0	27.5	0.8	65	215	5.1	21.9	35.7	14	150	3,600	8
4.0	700	FB27E17A0405KC	A	E1	32.0	20	11.0	27.5	0.8	65	260	5.6	18.1	35.7	14	150	3,600	8
5.0	700	FB27E27A0505KC	A	E2	32.0	22	13.0	27.5	0.8	65	325	6.4	14.5	33.3	15	120	2,400	10
6.0	700	FB27EJ7A0605KC	A	EJ	32.0	24.5	13.0	27.5	0.8	65	390	7.3	12.0	31.3	16	120	2,400	12
7.0	700	FB27EE7A0705KC	A	EE	32.0	24.5	15.0	27.5	0.8	65	455	8.2	10.3	28.6	18	110	2,200	13
7.0	700	FB27E37A0705KC	A	E3	32.0	28	14.0	27.5	0.8	65	455	8.2	10.3	27.8	18	110	2,200	16
8.0	700	FB27E37A0805KC	A	E3	32.0	28	14.0	27.5	0.8	65	520	8.9	9.0	27.8	18	110	2,200	16
9.0	700	FB27EL7A0905KC	A	EL	32.0	30	16.0	27.5	0.8	65	585	9.7	8.0	26.3	18	100	2,000	19
10.0	700	FB27E47A0106KC	A	E4	32.0	28	18.0	27.5	0.8	65	650	10.8	7.2	23.8	19	90	1,800	19

# DC FILTERING

FB - THB Grade IIIB - 105°C \*RoHS Compliant



## RATING & PART NUMBER REFERENCE

Cap	Rated Voltage	KAVX PN	Voltage Code	Case Code	Dimensions					dv/dt	Peak	Irms	ESR 10KHz	Rth	ESL	SPQ	MOQ	Estimated Weight
					W ± 0.8	H ± 0.8	T ± 0.8	P1 ± 1.0	d ± 0.05									
uF	V				mm	mm	mm	mm	mm	V/us	A	A	mΩ	°C/W	nH	pcs	pcs	g/pcs
11.0	700	FB27E67A0116KC	A	E6	32.0	33	18.0	27.5	0.8	65	715	11.8	6.6	21.7	21	90	1,800	23
12.0	700	FB27E67A0126KC	A	E6	32.0	33	18.0	27.5	0.8	65	780	12.4	6.0	21.7	21	90	1,800	23
15.0	700	FB27E97A0156KC	A	E9	32.0	37	22.0	27.5	0.8	65	975	15.5	4.8	17.2	23	70	840	32
18.0	700	FB27E97A0186KC	A	E9	32.0	37	22.0	27.5	0.8	65	1170	17.0	4.0	17.2	23	70	840	32
15.0	700	FB37F37A0156KC	A	F3	42.0	32	19.0	37.5	1.0	35	525	9.2	13.2	17.9	13	56	2,240	31
<b>Voltage Vndc 800V</b>																		
<b>Voltage Code B</b>																		
2.0	800	FB27EC7B0205KC	B	EC	32.0	18	9.0	27.5	0.8	65	130	3.9	31.6	41.7	12	180	4,320	7
3.0	800	FB27E17B0305KC	B	E1	32.0	20	11.0	27.5	0.8	65	195	5.2	21.1	35.7	14	150	3,600	8
4.0	800	FB27EJ7B0405KC	B	EJ	32.0	24.5	13.0	27.5	0.8	65	260	6.4	15.8	31.3	16	120	2,400	12
5.0	800	FB27EK7B0505KC	B	EK	32.0	24	14.0	27.5	0.8	65	325	7.3	12.6	29.4	17	110	2,200	13
5.0	800	FB27E37B0505KC	B	E3	32.0	28	14.0	27.5	0.8	65	325	7.5	12.6	27.8	18	110	2,200	16
5.0	800	FB27EE7B0505KC	B	EE	32.0	24.5	15.0	27.5	0.8	65	325	7.4	12.6	28.6	18	110	2,200	13
6.0	800	FB27EL7B0605KC	B	EL	32.0	30	16.0	27.5	0.8	65	390	8.5	10.5	26.3	18	100	2,000	19
7.0	800	FB27EL7B0705KC	B	EL	32.0	30	16.0	27.5	0.8	65	455	9.2	9.0	26.3	18	100	2,000	19
8.0	800	FB27E47B0805KC	B	E4	32.0	28	18.0	27.5	0.8	65	520	10.3	7.9	23.8	19	90	1,800	19
9.0	800	FB27E67B0905KC	B	E6	32.0	33	18.0	27.5	0.8	65	585	11.4	7.0	21.7	21	90	1,800	23
10.0	800	FB27E67B0106KC	B	E6	32.0	33	18.0	27.5	0.8	65	650	12.1	6.3	21.7	21	90	1,800	23
12.0	800	FB27E97B0126KC	B	E9	32.0	37	22.0	27.5	0.8	65	780	14.8	5.3	17.2	23	70	840	32
14.0	800	FB27E97B0146KC	B	E9	32.0	37	22.0	27.5	0.8	65	910	16.0	4.5	17.2	23	70	840	32
14.0	800	FB37F37B0146KC	B	F3	42.0	32	19.0	37.5	1.0	35	490	9.5	12.3	17.9	13	56	2,240	31
<b>Voltage Vndc 900V</b>																		
<b>Voltage Code C</b>																		
1.0	900	FB27EC7C0105KC	C	EC	32.0	18	9.0	27.5	0.8	65	65	2.9	56.2	41.7	12	180	4,320	7
2.0	900	FB27E17C0205KC	C	E1	32.0	20	11.0	27.5	0.8	65	130	4.5	28.1	35.7	14	150	3,600	8
2.5	900	FB27E27C0255KC	C	E2	32.0	22	13.0	27.5	0.8	65	163	5.2	22.5	33.3	15	120	2,400	10
3.0	900	FB27E27C0305KC	C	E2	32.0	22	13.0	27.5	0.8	65	195	5.7	18.7	33.3	15	120	2,400	10
3.5	900	FB27EJ7C0355KC	C	EJ	32.0	24.5	13.0	27.5	0.8	65	228	6.3	16.1	31.3	16	120	2,400	12
4.0	900	FB27EE7C0405KC	C	EE	32.0	24.5	15.0	27.5	0.8	65	260	7.1	14.0	28.6	18	110	2,200	13
4.5	900	FB27E37C0455KC	C	E3	32.0	28	14.0	27.5	0.8	65	293	7.6	12.5	27.8	18	110	2,200	16
5.5	900	FB27EL7C0555KC	C	EL	32.0	30	16.0	27.5	0.8	65	358	8.6	10.2	26.3	18	100	2,000	19
6.0	900	FB27E47C0605KC	C	E4	32.0	28	18.0	27.5	0.8	65	390	9.5	9.4	23.8	19	90	1,800	19
7.0	900	FB27E67C0705KC	C	E6	32.0	33	18.0	27.5	0.8	65	455	10.7	8.0	21.7	21	90	1,800	23
9.0	900	FB27E97C0905KC	C	E9	32.0	37	22.0	27.5	0.8	65	585	13.6	6.2	17.2	23	70	840	32
10.0	900	FB27E97C0106KC	C	E9	32.0	37	22.0	27.5	0.8	65	650	14.4	5.6	17.2	23	70	840	32
10.0	900	FB37F37C0106KC	C	F3	42.0	32	19.0	37.5	1.0	35	350	8.5	15.4	17.9	13	56	2,240	31
<b>Voltage Vndc 1000V</b>																		
<b>Voltage Code K</b>																		
1.0	1000	FB27EC7K0105KC	K	EC	32.0	18	9.0	27.5	0.8	65	65	3.1	50.6	41.7	12	180	4,320	7
1.8	1000	FB27E17K0185KC	K	E1	32.0	20	11.0	27.5	0.8	65	117	4.5	28.1	35.7	14	150	3,600	8
2.0	1000	FB27E27K0205KC	K	E2	32.0	22	13.0	27.5	0.8	65	130	4.9	25.3	33.3	15	120	2,400	10
2.2	1000	FB27E27K0225KC	K	E2	32.0	22	13.0	27.5	0.8	65	143	5.1	23.0	33.3	15	120	2,400	10
3.0	1000	FB27EK7K0305KC	K	EK	32.0	24	14.0	27.5	0.8	65	195	6.4	16.9	29.4	17	110	2,200	13
3.3	1000	FB27E37K0335KC	K	E3	32.0	28	14.0	27.5	0.8	65	215	6.9	15.3	27.8	18	110	2,200	16
4.0	1000	FB27EL7K0405KC	K	EL	32.0	30	16.0	27.5	0.8	65	260	7.8	12.6	26.3	18	100	2,000	19
5.0	1000	FB27E47K0505KC	K	E4	32.0	28	18.0	27.5	0.8	65	325	9.1	10.1	23.8	19	90	1,800	19
6.0	1000	FB27E67K0605KC	K	E6	32.0	33	18.0	27.5	0.8	65	390	10.4	8.4	21.7	21	90	1,800	23
7.0	1000	FB27E97K0705KC	K	E9	32.0	37	22.0	27.5	0.8	65	455	12.7	7.2	17.2	23	70	840	32
8.0	1000	FB27E97K0805KC	K	E9	32.0	37	22.0	27.5	0.8	65	520	13.5	6.3	17.2	23	70	840	32
7.0	1000	FB37FW7K0705KC	K	FW	42.0	30	17.0	37.5	1.0	35	245	7.3	19.8	19.2	12	63	2,520	27
8.0	1000	FB37F37K0805KC	K	F3	42.0	32	19.0	37.5	1.0	35	280	8.0	17.3	17.9	13	56	2,240	31
<b>Voltage Vndc 1100V</b>																		
<b>Voltage Code L</b>																		
1.0	1100	FB27EC7L0105KC	L	EC	32.0	18	9.0	27.5	0.8	65	65	3.2	46.0	41.7	12	180	4,320	7
1.5	1100	FB27E17L0155KC	L	E1	32.0	20	11.0	27.5	0.8	65	98	4.3	30.7	35.7	14	150	3,600	8
2.0	1100	FB27E27L0205KC	L	E2	32.0	22	13.0	27.5	0.8	65	130	5.1	23.0	33.3	15	120	2,400	10
2.2	1100	FB27EJ7L0225KC	L	EJ	32.0	24.5	13.0	27.5	0.8	65	143	5.5	20.9	31.3	16	120	2,400	12
3.0	1100	FB27E37L0305KC	L	E3	32.0	28	14.0	27.5	0.8	65	195	6.9	15.3	27.8	18	110	2,200	16

# DC FILTERING

FB - THB Grade IIIB - 105°C \*RoHS Compliant

## RATING & PART NUMBER REFERENCE

Cap	Rated Voltage	KAVX PN	Voltage Code	Case Code	Dimensions					dv/dt	Peak	Irms	ESR 10KHz	Rth	ESL	SPQ	MOQ	Estimated Weight	
					W	H	T	P1	d										
					± 0.8	± 0.8	± 0.8	± 1.0	± 0.05										
uF	V				mm	mm	mm	mm	mm	V/us	A	A	mΩ	°C/W	nH	pcs	pcs	g/pcs	
3.3	1100	FB27EL7L0335KC	L	EL	32.0	30	16.0	27.5	0.8	65	215	7.4	13.9	26.3	18	100	2,000	19	
4.0	1100	FB27E47L0405KC	L	E4	32.0	28	18.0	27.5	0.8	65	260	8.5	11.5	23.8	19	90	1,800	19	
4.5	1100	FB27E67L0455KC	L	E6	32.0	33	18.0	27.5	0.8	65	293	9.5	10.2	21.7	21	90	1,800	23	
5.0	1100	FB27E67L0505KC	L	E6	32.0	33	18.0	27.5	0.8	65	325	10.0	9.2	21.7	21	90	1,800	23	
6.0	1100	FB27E97L0605KC	L	E9	32.0	37	22.0	27.5	0.8	65	390	12.3	7.7	17.2	23	70	840	32	
7.0	1100	FB27E97L0705KC	L	E9	32.0	37	22.0	27.5	0.8	65	455	13.3	6.6	17.2	23	70	840	32	
7.0	1100	FB37F37L0705KC	L	F3	42.0	32	19.0	37.5	1.0	35	245	7.9	18.0	17.9	13	56	2,240	31	
					Voltage Vndc 1200V					Voltage Code P									
1.0	1200	FB27E17P0105KC	P	E1	32.0	20	11.0	27.5	0.8	65	65	3.8	39.1	35.7	14	150	3,600	8	
1.2	1200	FB27E17P0125KC	P	E1	32.0	20	11.0	27.5	0.8	65	78	4.0	35.1	35.7	14	150	3,600	8	
1.5	1200	FB27E27P0155KC	P	E2	32.0	22	13.0	27.5	0.8	65	98	4.6	28.1	33.3	15	120	2,400	10	
2.0	1200	FB27EJ7P0205KC	P	EJ	32.0	24.5	13.0	27.5	0.8	65	130	5.5	21.1	31.3	16	120	2,400	12	
2.2	1200	FB27E37P0225KC	P	E3	32.0	28	14.0	27.5	0.8	65	143	6.1	19.2	27.8	18	110	2,200	16	
3.0	1200	FB27EL7P0305KC	P	EL	32.0	30	16.0	27.5	0.8	65	195	7.4	14.0	26.3	18	100	2,000	19	
3.3	1200	FB27E47P0335KC	P	E4	32.0	28	18.0	27.5	0.8	65	215	8.1	12.8	23.8	19	90	1,800	19	
4.0	1200	FB27E67P0405KC	P	E6	32.0	33	18.0	27.5	0.8	65	260	9.3	10.5	21.7	21	90	1,800	23	
5.0	1200	FB27E97P0505KC	P	E9	32.0	37	22.0	27.5	0.8	65	325	11.7	8.4	17.2	23	70	840	32	
4.5	1200	FB37FW7P0455KC	P	FW	42.0	30	17.0	37.5	1.0	35	158	6.4	25.6	19.2	12	63	2,520	27	
5.5	1200	FB37F37P0555KC	P	F3	42.0	32	19.0	37.5	1.0	35	193	7.3	20.9	17.9	13	56	2,240	31	

# DC FILTERING

FB - THB 2000H 125°C \*RoHS Compliant



## CASE CODE

Case Code	Dimensions									
	W ± 0.8(0.03)		H ± 0.8(0.03)		T ± 0.8(0.03)		P1 ± 1.0(0.04)		d ± 0.05(0.002)	
	mm	in	mm	in	mm	in	mm	in	mm	in
EC	32.0	(1.26)	18.0	(0.71)	9.0	(0.35)	27.5	(1.08)	0.8	(0.03)
E1	32.0	(1.26)	20.0	(0.79)	11.0	(0.43)	27.5	(1.08)	0.8	(0.03)
E2	32.0	(1.26)	22.0	(0.87)	13.0	(0.51)	27.5	(1.08)	0.8	(0.03)
EK	32.0	(1.26)	24.0	(0.94)	14.0	(0.55)	27.5	(1.08)	0.8	(0.03)
EJ	32.0	(1.26)	24.5	(0.96)	13.0	(0.51)	27.5	(1.08)	0.8	(0.03)
EE	32.0	(1.26)	24.5	(0.96)	15.0	(0.59)	27.5	(1.08)	0.8	(0.03)
E3	32.0	(1.26)	28.0	(1.10)	14.0	(0.55)	27.5	(1.08)	0.8	(0.03)
E4	32.0	(1.26)	28.0	(1.10)	18.0	(0.71)	27.5	(1.08)	0.8	(0.03)
EL	32.0	(1.26)	30.0	(1.18)	16.0	(0.63)	27.5	(1.08)	0.8	(0.03)
E6	32.0	(1.26)	33.0	(1.30)	18.0	(0.71)	27.5	(1.08)	0.8	(0.03)
E9	32.0	(1.26)	37.0	(1.46)	22.0	(0.87)	27.5	(1.08)	0.8	(0.03)
FV	42.0	(1.65)	28.0	(1.10)	17.0	(0.67)	37.5	(1.48)	1.0	(0.04)
FW	42.0	(1.65)	30.0	(1.18)	17.0	(0.67)	37.5	(1.48)	1.0	(0.04)
F3	42.0	(1.65)	32.0	(1.26)	19.0	(0.75)	37.5	(1.48)	1.0	(0.04)

## RATING & PART NUMBER REFERENCE

Cap uF	Rated Voltage V	KAVX PN	Voltage Code	Case Code	Dimensions					dv/dt V/us	Peak A	Irms A	ESR 10KHz mΩ	Rth °C/W	ESL nH	SPQ pcs	MOQ pcs	Estimated Weight g/pcs
					W ± 0.8	H ± 0.8	T ± 0.8	P1 ± 1.0	d ± 0.05									
					mm	mm	mm	mm	mm									
<b>Voltage Code I Vndc at 85°C = 450Vdc; Vop105 at 105°C = 351Vdc; Vop115 at 115°C = 301Vdc; Vop125 at 125°C = 252Vdc</b>																		
3.3	450	FB27EC8I0335KC	I	EC	32.0	18	9.0	27.5	0.8	65	215	4.7	22.1	41.7	12	180	4,320	7
4.0	450	FB27EC8I0405KC	I	EC	32.0	18	9.0	27.5	0.8	65	260	5.1	18.2	41.7	12	180	4,320	7
5.0	450	FB27E18I0505KC	I	E1	32.0	20	11.0	27.5	0.8	65	325	6.2	14.6	35.7	14	150	3,600	8
6.0	450	FB27E18I0605KC	I	E1	32.0	20	11.0	27.5	0.8	65	390	6.8	12.1	35.7	14	150	3,600	8
7.0	450	FB27E28I0705KC	I	E2	32.0	22	13.0	27.5	0.8	65	455	7.6	10.4	33.3	15	120	2,400	10
8.0	450	FB27E28I0805KC	I	E2	32.0	22	13.0	27.5	0.8	65	520	8.1	9.1	33.3	15	120	2,400	10
10.0	450	FB27EJ8I0106KC	I	EJ	32.0	24.5	13.0	27.5	0.8	65	650	9.4	7.3	31.3	16	120	2,400	12
12.0	450	FB27E38I0126KC	I	E3	32.0	28	14.0	27.5	0.8	65	780	10.9	6.1	27.8	18	110	2,200	16
13.0	450	FB27E38I0136KC	I	E3	32.0	28	14.0	27.5	0.8	65	845	11.3	5.6	27.8	18	110	2,200	16
15.0	450	FB27EL8I0156KC	I	EL	32.0	30	16.0	27.5	0.8	65	975	12.5	4.9	26.3	18	100	2,000	19
15.0	450	FB27E48I0156KC	I	E4	32.0	28	18.0	27.5	0.8	65	975	12.7	5.2	23.8	19	90	1,800	19
16.0	450	FB27E48I0166KC	I	E4	32.0	28	18.0	27.5	0.8	65	1040	13.6	4.6	23.8	19	90	1,800	19
18.0	450	FB27E68I0186KC	I	E6	32.0	33	18.0	27.5	0.8	65	1170	14.6	4.3	21.7	21	90	1,800	23
20.0	450	FB27E68I0206KC	I	E6	32.0	33	18.0	27.5	0.8	65	1300	15.4	3.9	21.7	21	90	1,800	23
22.0	450	FB27E98I0226KC	I	E9	32.0	37	22.0	27.5	0.8	65	1430	16.5	4.3	17.2	23	70	840	32
25.0	450	FB27E98I0256KC	I	E9	32.0	37	22.0	27.5	0.8	65	1625	17.6	3.7	17.2	23	70	840	32
28.0	450	FB27E98I0286KC	I	E9	32.0	37	22.0	27.5	0.8	65	1820	18.6	3.3	17.2	23	70	840	32
20.0	450	FB37FV8I0206KC	I	FV	42.0	28	17.0	37.5	1.0	35	700	10.9	8.4	20.0	12	63	1,260	26
25.0	450	FB37F38I0256KC	I	F3	42.0	32	19.0	37.5	1.0	35	875	12.9	6.8	17.9	13	56	1,120	31
<b>Voltage Code Q Vndc at 85°C = 600Vdc; Vop105 at 105°C = 468Vdc; Vop115 at 115°C = 402Vdc; Vop125 at 125°C = 336Vdc</b>																		
2.0	600	FB27EC8Q0205KC	Q	EC	32.0	18	9.0	27.5	0.8	65	130	4.1	28.1	41.7	12	180	4,320	7
2.2	600	FB27EC8Q0225KC	Q	EC	32.0	18	9.0	27.5	0.8	65	143	4.3	25.5	41.7	12	180	4,320	7
3.0	600	FB27E18Q0305KC	Q	E1	32.0	20	11.0	27.5	0.8	65	195	5.5	18.7	35.7	14	150	3,600	8
3.3	600	FB27E18Q0335KC	Q	E1	32.0	20	11.0	27.5	0.8	65	195	5.7	17.0	35.7	14	150	3,600	8
4.0	600	FB27E18Q0405KC	Q	E1	32.0	20	11.0	27.5	0.8	65	260	6.3	14.0	35.7	14	150	3,600	8
5.0	600	FB27E28Q0505KC	Q	E2	32.0	22	13.0	27.5	0.8	65	325	7.3	11.2	33.3	15	120	2,400	10
6.0	600	FB27EJ8Q0605KC	Q	EJ	32.0	24.5	13.0	27.5	0.8	65	390	8.3	9.4	31.3	16	120	2,400	12
7.0	600	FB27EE8Q0705KC	Q	EE	32.0	24.5	15.0	27.5	0.8	65	455	9.3	8.0	28.6	18	110	2,200	13
7.0	600	FB27E38Q0705KC	Q	E3	32.0	28	14.0	27.5	0.8	65	520	9.5	8.0	27.8	18	110	2,200	16

# DC FILTERING

FB - THB 2000H 125°C \*RoHS Compliant



## RATING & PART NUMBER REFERENCE

Cap	Rated Voltage	KAVX PN	Voltage Code	Case Code	Dimensions					dv/dt	Peak	Irms	ESR 10KHz	Rth	ESL	SPQ	MOQ	Estimated Weight
					W ± 0.8	H ± 0.8	T ± 0.8	P1 ± 1.0	d ± 0.05									
uF	V				mm	mm	mm	mm	mm	V/us	A	A	mΩ	°C/W	nH	pcs	pcs	g/pcs
8.0	600	FB27E38Q0805KC	Q	E3	32.0	28	14.0	27.5	0.8	65	520	10.1	7.0	27.8	18	110	2,200	16
9.0	600	FB27EL8Q0905KC	Q	EL	32.0	30	16.0	27.5	0.8	65	585	11.0	6.2	26.3	18	100	2,000	19
10.0	600	FB27E48Q0106KC	Q	E4	32.0	28	18.0	27.5	0.8	65	650	12.2	5.6	23.8	19	90	1,800	19
11.0	600	FB27E68Q0116KC	Q	E6	32.0	33	18.0	27.5	0.8	65	715	13.4	5.1	21.7	21	90	1,800	23
12.0	600	FB27E68Q0126KC	Q	E6	32.0	33	18.0	27.5	0.8	65	780	14.0	4.7	21.7	21	90	1,800	23
15.0	600	FB27E98Q0156KC	Q	E9	32.0	37	22.0	27.5	0.8	65	975	15.5	4.8	17.2	23	70	840	32
18.0	600	FB27E98Q0186KC	Q	E9	32.0	37	22.0	27.5	0.8	65	1170	17.0	4.0	17.2	23	70	840	32
15.0	600	FB37F38Q0156KC	Q	F3	42.0	32	19.0	37.5	1.0	35	525	11.4	8.7	17.9	13	56	1,120	31
<b>Voltage Code A Vndc at 85°C = 700Vdc; Vop105 at 105°C = 546Vdc; Vop115 at 115°C = 469Vdc; Vop125 at 125°C = 392Vdc</b>																		
2.0	700	FB27EC8A0205KC	A	EC	32.0	18	9.0	27.5	0.8	65	130	4.4	24.6	41.7	12	180	4,320	7
3.0	700	FB27E18A0305KC	A	E1	32.0	20	11.0	27.5	0.8	65	195	5.8	16.4	35.7	14	150	3,600	8
4.0	700	FB27EJ8A0405KC	A	EJ	32.0	24.5	13.0	27.5	0.8	65	260	7.2	12.3	31.3	16	120	2,400	12
5.0	700	FB27EK8A0505KC	A	EK	32.0	24	14.0	27.5	0.8	65	325	8.3	9.8	29.4	17	110	2,200	13
5.0	700	FB27E38A0505KC	A	E3	32.0	28	14.0	27.5	0.8	65	325	8.6	9.8	27.8	18	110	2,200	16
5.0	700	FB27EE8A0505KC	A	EE	32.0	24.5	15.0	27.5	0.8	65	325	8.4	9.8	28.6	18	110	2,200	13
6.0	700	FB27EL8A0605KC	A	EL	32.0	30	16.0	27.5	0.8	65	390	9.6	8.2	26.3	18	100	2,000	19
7.0	700	FB27EL8A0705KC	A	EL	32.0	30	16.0	27.5	0.8	65	455	10.4	7.0	26.3	18	100	2,000	19
8.0	700	FB27E48A0805KC	A	E4	32.0	28	18.0	27.5	0.8	65	520	11.7	6.1	23.8	19	90	1,800	19
9.0	700	FB27E68A0905KC	A	E6	32.0	33	18.0	27.5	0.8	65	585	13.0	5.5	21.7	21	90	1,800	23
10.0	700	FB27E68A0106KC	A	E6	32.0	33	18.0	27.5	0.8	65	650	13.7	4.9	21.7	21	90	1,800	23
12.0	700	FB27E98A0126KC	A	E9	32.0	37	22.0	27.5	0.8	65	780	14.8	5.3	17.2	23	70	840	32
14.0	700	FB27E98A0146KC	A	E9	32.0	37	22.0	27.5	0.8	65	910	16.0	4.5	17.2	23	70	840	32
14.0	700	FB37F38A0146KC	A	F3	42.0	32	19.0	37.5	1.0	35	490	11.7	8.1	17.9	13	56	1,120	31
<b>Voltage Code C Vndc at 85°C = 900Vdc; Vop105 at 105°C = 702Vdc; Vop115 at 115°C = 603Vdc; Vop125 at 125°C = 504Vdc</b>																		
1.0	900	FB27EC8C0105KC	C	EC	32.0	18	9.0	27.5	0.8	65	65	3.5	39.3	41.7	12	180	4,320	7
1.8	900	FB27E18C0185KC	C	E1	32.0	20	11.0	27.5	0.8	65	117	5.1	21.9	35.7	14	150	3,600	8
2.0	900	FB27E28C0205KC	C	E2	32.0	22	13.0	27.5	0.8	65	130	5.5	19.7	33.3	15	120	2,400	10
2.2	900	FB27E28C0225KC	C	E2	32.0	22	13.0	27.5	0.8	65	143	5.8	17.9	33.3	15	120	2,400	10
3.0	900	FB27EK8C0305KC	C	EK	32.0	24	14.0	27.5	0.8	65	195	7.2	13.1	29.4	17	110	2,200	13
3.3	900	FB27E38C0335KC	C	E3	32.0	28	14.0	27.5	0.8	65	215	7.8	11.9	27.8	18	110	2,200	16
4.0	900	FB27EL8C0405KC	C	EL	32.0	30	16.0	27.5	0.8	65	260	8.8	9.8	26.3	18	100	2,000	19
5.0	900	FB27E48C0505KC	C	E4	32.0	28	18.0	27.5	0.8	65	325	10.3	7.9	23.8	19	90	1,800	19
6.0	900	FB27E68C0605KC	C	E6	32.0	33	18.0	27.5	0.8	65	390	11.8	6.6	21.7	21	90	1,800	23
7.0	900	FB27E98C0705KC	C	E9	32.0	37	22.0	27.5	0.8	65	455	12.7	7.2	17.2	23	70	840	32
8.0	900	FB27E98C0805KC	C	E9	32.0	37	22.0	27.5	0.8	65	520	13.5	6.3	17.2	23	70	840	32
7.0	900	FB37FW8C0705KC	C	FW	42.0	29	17.0	37.5	1.0	35	245	8.9	13.0	19.2	12	63	1,260	27
8.0	900	FB37F38C0805KC	C	F3	42.0	32	19.0	37.5	1.0	35	280	9.9	11.4	17.9	13	56	1,120	31
<b>Voltage Code L Vndc at 85°C = 1100Vdc; Vop105 at 105°C = 858Vdc; Vop115 at 115°C = 737Vdc; Vop125 at 125°C = 616Vdc</b>																		
1.0	1100	FB27E18L0105KC	L	E1	32.0	20	11.0	27.5	0.8	65	65	4.5	27.3	35.7	14	150	3,600	8
1.2	1100	FB27E18L0125KC	L	E1	32.0	20	11.0	27.5	0.8	65	78	4.5	27.3	35.7	14	150	3,600	8
1.5	1100	FB27E28L0155KC	L	E2	32.0	22	13.0	27.5	0.8	65	98	5.2	21.9	33.3	15	120	2,400	10
2.0	1100	FB27EJ8L0205KC	L	EJ	32.0	24.5	13.0	27.5	0.8	65	130	6.2	16.4	31.3	16	120	2,400	12
2.2	1100	FB27E38L0225KC	L	E3	32.0	28	14.0	27.5	0.8	65	143	7.0	14.9	27.8	18	110	2,200	16
3.0	1100	FB27EL8L0305KC	L	EL	32.0	30	16.0	27.5	0.8	65	195	8.3	10.9	26.3	18	100	2,000	19
3.3	1100	FB27E48L0335KC	L	E4	32.0	28	18.0	27.5	0.8	65	215	9.2	9.9	23.8	19	90	1,800	19
4.0	1100	FB27E68L0405KC	L	E6	32.0	33	18.0	27.5	0.8	65	260	10.6	8.2	21.7	21	90	1,800	23
5.0	1100	FB27E98L0505KC	L	E9	32.0	37	22.0	27.5	0.8	65	325	13.3	6.6	17.2	23	70	840	32
4.5	1100	FB37FW8L0455KC	L	FW	42.0	29	17.0	37.5	1.0	35	158	7.8	16.9	19.2	12	63	1,260	27
5.5	1100	FB37F38L0555KC	L	F3	42.0	32	19.0	37.5	1.0	35	193	9.0	13.8	17.9	13	56	1,120	31

## Looking for pricing, stock, or lifecycle information?

Click below to explore more details on WIN SOURCE:

- ⊖ [View FB37M6P0106KC](#) on WIN SOURCE
- ⊖ [AVX Corp/Kyocera Corp](#) Information

## Optimize Your Supply Chain with WIN SOURCE Solutions

- ✓ Global Sourcing Solution
- ✓ Obsolete Management
- ✓ Cost Control Management
- ✓ Shortage Management
- ✓ Alternative Solution
- ✓ Excess Inventory Management