

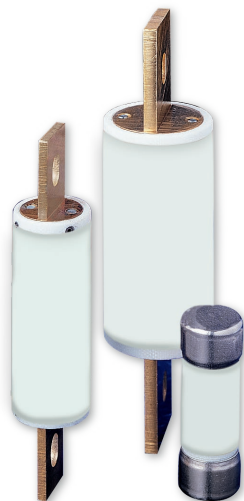


**THE DATASHEET OF  
KLDR020.T**



# LDFJ SERIES - DRIVE FUSES

600 VAC/450 VDC • Fast-Acting • 1-600 A



## Description

LDFJ series fuses provide space saving, high-speed performance and short-circuit protection for AC and DC drives.

LDFJ series offers current limiting features with lowest I<sup>2</sup>T for protection of power semiconductor devices and motor controllers.

## Applications

- All AC/DC drives (Including variable frequency drives)
- Power converters and solid-state devices
- Resistive loads, such as resistance electric heat

## Specifications

<b>Voltage Ratings</b>	600 VAC / 450 VDC (30-600 A)
<b>Interrupting Ratings</b>	200 kA AC / 100 kA DC
<b>Ampere Range</b>	1–600 A
<b>Approvals</b>	Standard 248-8, Class J UL Listed CSA Certified

## Web Resources

TC curves, CAD drawings and other technical information contact Tech-Line at 800-TEC-FUSE or techline@littelfuse.com.

## Recommended Fuse Holders

LFJ60 Series  
LFPSJ Series (1-60 A)

## Ordering Information

AMPERE RATINGS						
1	6	20	45	90	175	350
2	8	25	50	100	200	400
3	10	30	60	110	225	450
4	12	35	70	125	250	500
5	15	40	80	150	300	600

AMPERE RANGE	SERIES	AMP CODE	CATALOG NUMBER	ORDERING NUMBER	PACK QTY
1-60	LDFJ	060	LDFJ060	LDFJ060.T	10 PCS/BOX
70-200	LDFJ	110	LDFJ110	LDFJ110.V	1 PC/BOX
225-600	LDFJ	400	LDFJ400	LDFJ400.X	1 PC/BOX

## Dimensions Inches (mm)

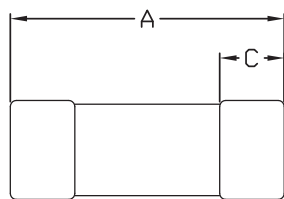


FIGURE 1

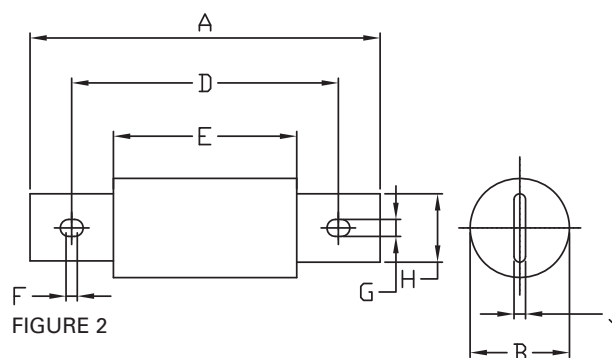
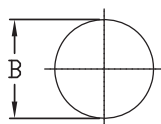
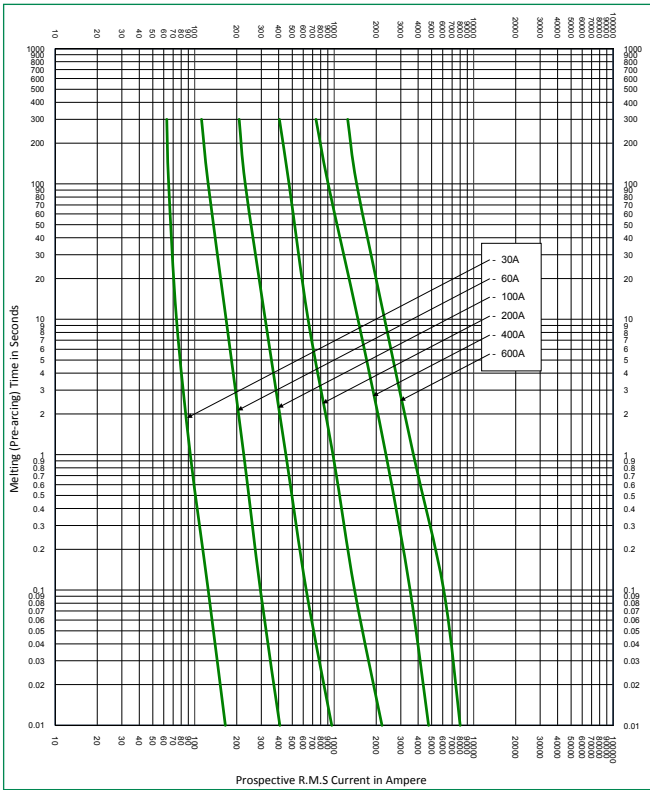


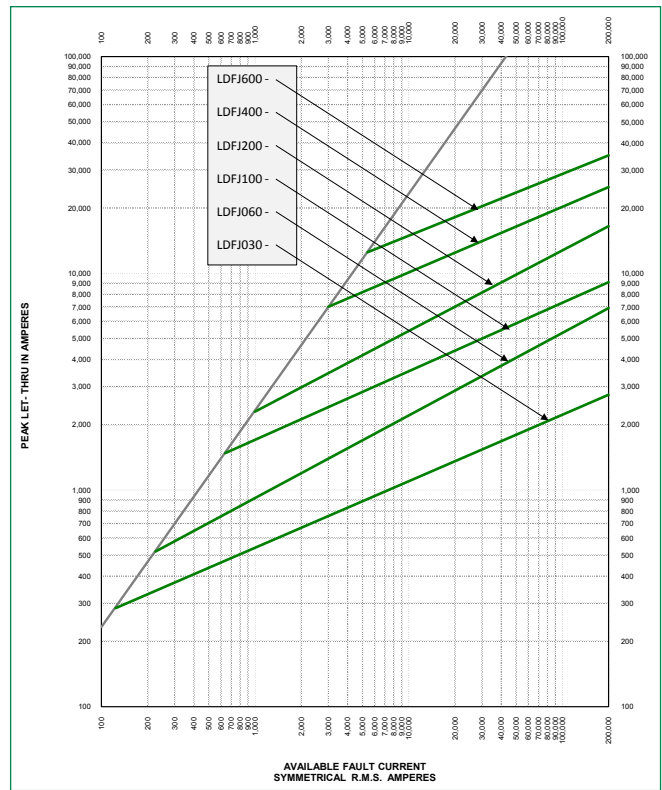
FIGURE 2

AMPERES	REFER TO FIG. NO.	DIMENSIONS INCHES (mm)								
		A	B	C	D	E	F	G	H	J
1 – 30	1	2.25 (57.2)	0.81 (20.6)	0.50 (12.7)	-	-	-	-	-	-
35 – 60	1	2.38 (60.5)	1.06 (26.9)	0.63 (16.0)	-	-	-	-	-	-
70 – 100	2	4.63 (117.6)	1.13 (28.7)	-	3.63 (92.2)	2.63 (66.8)	0.43 (10.9)	0.28 (7.1)	0.75 (19.1)	0.13 (3.3)
110 – 200	2	5.75 (146.1)	1.63 (41.4)	-	4.38 (111.3)	3.0 (76.2)	0.43 (10.9)	0.28 (7.1)	1.13 (28.7)	0.19 (4.8)
225 – 400	2	7.13 (181.1)	2.11 (53.6)	-	5.25 (133.4)	3.38 (85.9)	0.58 (14.7)	0.41 (10.4)	1.63 (41.4)	0.25 (6.4)
450 – 600	2	8.0 (203.2)	2.5 (63.5)	-	6.0 (152.4)	3.75 (95.3)	0.74 (18.8)	0.53 (13.5)	2.0 (50.8)	0.38 (9.7)

**LDFJTC curve**



**LDFJ Peak Let-Through Curve**



**Disclaimer Notice** - Information furnished is believed to be accurate and reliable. However, users should independently evaluate the suitability of and test each product selected for their own applications. Littelfuse products are not designed for, and may not be used in, all applications. Read complete Disclaimer Notice at [www.littelfuse.com/product-disclaimer](http://www.littelfuse.com/product-disclaimer).

## Looking for pricing, stock, or lifecycle information?

Click below to explore more details on WIN SOURCE:

 [View KLDR020.T on WIN SOURCE](#)

 [Littelfuse Inc. Information](#)

## Optimize Your Supply Chain with WIN SOURCE Solutions

-  Global Sourcing Solution
-  Obsolete Management
-  Cost Control Management
-  Shortage Management
-  Alternative Solution
-  Excess Inventory Management