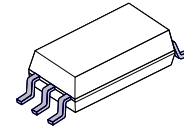




**THE DATASHEET OF  
FOD8384**



# 2.5 A Output Current, High-Speed, MOSFET/IGBT Gate Drive Optocoupler in OPTOPLANAR® Wide-Body SOP 5-Pin



SOIC6 W LESS PIN 2  
 CASE 752AG

## FOD8384

### Description

The FOD8384 is a 2.5 A output current gate drive optocoupler capable of driving medium-power IGBT/ MOSFETs. It is ideally suited for fast-switching driving of power IGBT and MOSFET used in motor-control inverter applications and high-performance power systems.

The FOD8384 utilizes **onsemi**'s OPTOPLANAR coplanar packaging technology and optimized IC design to achieve reliable high-insulation voltage and high-noise immunity.

It consists of an Aluminum Gallium Arsenide (AlGaAs) Light-Emitting Diode (LED) optically coupled to an integrated circuit with a high-speed driver for push-pull MOSFET output stage. The device is housed in a wide body, 5-pin, small-outline, plastic package.

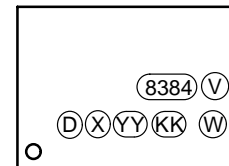
### Features

- Reliable and High-Voltage Insulation with Greater than 8 mm Creepage and Clearance Distance and 0.5 mm Internal Insulation Distance
- 2.5 A Output Current Driving Capability for Medium-Power IGBT/MOSFET
  - ◆ P-Channel MOSFET at Output Stage Enables Output Voltage Swing Close to Supply Rail
- 35 kV/μs Minimum Common Mode Rejection
- Wide Supply Voltage Range: 15 V to 30 V
- Fast Switching Speed Over Full Operating Temperature Range
  - ◆ 210 ns Maximum Propagation Delay
  - ◆ 65 ns Maximum Pulse-Width Distortion
- Under-Voltage Lockout (UVLO) with Hysteresis
- Extended Industrial Temperature Range: -40°C to 100°C
- Safety and Regulatory Approvals:
  - ◆ UL1577, 5,000 VACRMS for 1 Minute
  - ◆ DIN-EN/IEC60747-5-5, 1,414 V Peak Working
- Insulation Voltage
- These are Pb-Free Devices

### Applications

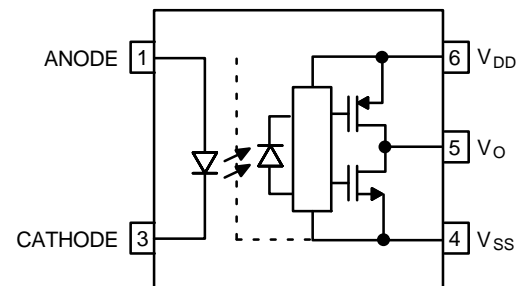
- AC and Brushless DC Motor Drives
- Industrial Inverter
- Uninterruptible Power Supply
- Induction Heating
- Isolated IGBT/Power MOSFET Gate Drive

### MARKING DIAGRAM



- 8384 = Device number, e.g., '8384' for FOD8384  
 V = DIN EN/IEC60747-5-5 Option (Only Appears on Component Ordered with This Option)  
 D = Plant Code  
 X = Last Digit Year Code  
 YY = Two-digit Work Week  
 KK = Lot Traceability Code  
 W = Package Assembly Code

### FUNCTIONAL SCHEMATIC



### ORDERING INFORMATION

See detailed ordering and shipping information on page 14 of this data sheet.

### Related Resources

- [FOD3184](#) – 3 A Output Current, High-Speed MOSFET/IGBT Gate Drive Optocoupler Datasheet
- <https://www.onsemi.com/products/interfaces/igbt-mosfet-gate-drivers-optocouplers>

# FOD8384

## TRUTH TABLE

| LED | $V_{DD} - V_{SS}$ "Positive Going" (Turn-on) | $V_{DD} - V_{SS}$ "Positive Going" (Turn-off) | $V_O$      |
|-----|--|---|------------|
| Off | 0 V to 30 V                                  | 0 V to 30 V                                   | LOW        |
| On  | 0 V to 11.5 V                                | 0 V to 10 V                                   | LOW        |
| On  | 11.5 V to 14.5 V                             | 10 V to 13 V                                  | Transition |
| On  | 14.5 V to 30 V                               | 13 V to 30 V                                  | HIGH       |

## Pin Configuration

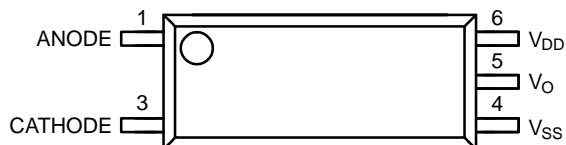


Figure 1. Pin Configuration

## PIN DEFINITIONS

| Pin No. | Name     | Description             |
|---------|----------|-------------------------|
| 1       | Anode    | LED Anode               |
| 3       | Cathode  | LED Cathode             |
| 4       | $V_{SS}$ | Negative Supply Voltage |
| 5       | $V_O$    | Output Voltage          |
| 6       | $V_{DD}$ | Positive Supply Voltage |

**SAFETY AND INSULATION RATINGS** (As per DIN EN/IEC60747-5-5, this optocoupler is suitable for "safe electrical insulation" only within the safety limit data. Compliance with the safety ratings shall be ensured by means of protective circuits.)

| Symbol         | Parameter  | Min.   | Typ.      | Max. | Unit        |
|----------------|--|--------|-----------|------|-------------|
|                | Installation Classifications per DIN VDE 0110/1.89 Table 1   |        |           |      |             |
|                | For Rated Mains Voltage < 150 $V_{RMS}$  | –      | I–IV      | –    |             |
|                | For Rated Mains Voltage < 300 $V_{RMS}$  | –      | I–IV      | –    |             |
|                | For Rated Mains Voltage < 450 $V_{RMS}$  | –      | I–III     | –    |             |
|                | For Rated Mains Voltage < 600 $V_{RMS}$  | –      | I–III     | –    |             |
|                | Climatic Classification  | –      | 40/100/21 | –    |             |
|                | Pollution Degree (DIN VDE 0110/1.89)   | –      | 2         | –    |             |
| CTI            | Comparative Tracking Index   | 175    | –         | –    |             |
| $V_{PR}$       | Input-to-Output Test Voltage, Method b, $V_{IORM} \times 1.875 = V_{PR}$ , 100% Production Test with $t_m = 1$ s, Partial Discharge < 5 pC | 2651   | –         | –    |             |
|                | Input-to-Output Test Voltage, Method a, $V_{IORM} \times 1.6 = V_{PR}$ , Type and Sample Test with $t_m = 10$ s, Partial Discharge < 5 pC  | 2262   | –         | –    |             |
| $V_{IORM}$     | Maximum Working Insulation Voltage   | 1414   | –         | –    | $V_{peak}$  |
| $V_{IOTM}$     | Highest Allowable Over Voltage   | 8000   | –         | –    | $V_{peak}$  |
|                | External Creepage  | 8.0    | –         | –    | mm          |
|                | External Clearance   | 8.0    | –         | –    | mm          |
|                | Insulation Thickness   | 0.5    | –         | –    | mm          |
| $T_S$          | Safety Limit Values – Maximum Values Allowed in the Event of a Failure<br>Case Temperature   | 150    | –         | –    | $^{\circ}C$ |
| $I_{S,INPUT}$  | Input Current  | 200    | –         | –    | mA          |
| $P_{S,OUTPUT}$ | Output Power   | 600    | –         | –    | mW          |
| $R_{IO}$       | Insulation Resistance at $T_S$ , $V_{IO} = 500$ V  | $10^9$ | –         | –    | $\Omega$    |

# FOD8384

## ABSOLUTE MAXIMUM RATINGS (T<sub>A</sub> = 25°C unless otherwise specified.)

| Symbol                            | Parameter   | Value                | Unit |
|-----------------------------------|---|----------------------|------|
| T <sub>STG</sub>                  | Storage Temperature   | -40 to +125          | °C   |
| T <sub>OPR</sub>                  | Operating Temperature   | -40 to +100          | °C   |
| T <sub>J</sub>                    | Junction Temperature  | -40 to +125          | °C   |
| T <sub>SOL</sub>                  | Lead Solder Temperature<br><i>Refer to Reflow Temperature Profile on page 13.</i> | 260 for 10 s         | °C   |
| I <sub>F(AVG)</sub>               | Average Input Current   | 25                   | mA   |
| V <sub>R</sub>                    | Reverse Input Voltage   | 5.0                  | V    |
| I <sub>O(PEAK)</sub>              | Peak Output Current (Note 1)  | 3.0                  | A    |
| V <sub>DD</sub> - V <sub>SS</sub> | Supply Voltage  | -0.5 to 35           | V    |
| V <sub>O(PEAK)</sub>              | Peak Output Voltage   | 0 to V <sub>DD</sub> | V    |
| PD <sub>I</sub>                   | Input Power Dissipation (Note 2, 4)   | 45                   | mW   |
| PD <sub>O</sub>                   | Output Power Dissipation (Note 3, 4)  | 500                  | mW   |

Stresses exceeding those listed in the Maximum Ratings table may damage the device. If any of these limits are exceeded, device functionality should not be assumed, damage may occur and reliability may be affected.

1. Maximum pulse width = 10 μs, maximum duty cycle = 0.2%.
2. No derating required across operating temperature range.
3. Derate linearly from 25°C at a rate of 5.2 mW/°C.
4. Functional operation under these conditions is not implied. Permanent damage may occur if the device is subjected to conditions outside these ratings.

## RECOMMENDED OPERATING CONDITIONS

| Symbol                            | Parameter                     | Min | Max | Unit |
|-----------------------------------|-------------------------------|-----|-----|------|
| T <sub>A</sub>                    | Ambient Operating Temperature | -40 | 100 | °C   |
| V <sub>DD</sub> - V <sub>SS</sub> | Supply Voltage                | 15  | 30  | V    |
| I <sub>F(ON)</sub>                | Input Current (ON)            | 10  | 16  | mA   |
| V <sub>F(OFF)</sub>               | Input Voltage (OFF)           | 0   | 0.8 | V    |

Functional operation above the stresses listed in the Recommended Operating Ranges is not implied. Extended exposure to stresses beyond the Recommended Operating Ranges limits may affect device reliability.

## ISOLATION CHARACTERISTICS (Apply over all recommended conditions; typical value is measured at T<sub>A</sub> = 25°C.)

| Symbol           | Parameter                      | Conditions   | Min   | Typ              | Max | Unit             |
|------------------|--------------------------------|--|-------|------------------|-----|------------------|
| V <sub>ISO</sub> | Input-Output Isolation Voltage | T <sub>A</sub> = 25°C, R.H. < 50%, t = 60 s, I <sub>I-O</sub> ≤ 20 μA, 50 Hz (Note 5, 6) | 5,000 | -                | -   | V <sub>RMS</sub> |
| R <sub>ISO</sub> | Isolation Resistance           | V <sub>I-O</sub> = 500 V (Note 5)  | -     | 10 <sup>11</sup> | -   | Ω                |
| C <sub>ISO</sub> | Isolation Capacitance          | V <sub>I-O</sub> = 0 V, Frequency = 1.0 MHz (Note 6)                                     | -     | 1                | -   | pF               |

5. Device is considered a two-terminal device: pins 1 and 3 are shorted together and pins 4, 5 and 6 are shorted together.
6. 5,000 VAC<sub>RMS</sub> for 1 minute duration is equivalent to 6,000 VAC<sub>RMS</sub> for 1 second duration.

# FOD8384

**ELECTRICAL CHARACTERISTICS** (Apply over all recommended conditions, typical value is measured at  $V_{DD} = 30\text{ V}$ ,  $V_{SS} = \text{Ground}$ ,  $T_A = 25^\circ\text{C}$  unless otherwise specified.)

| Symbol              | Parameter                                  | Test Condition   | Min            | Typ  | Max            | Unit  | Figure     |
|---------------------|--|--|----------------|------|----------------|-------|------------|
| $V_F$               | Input Forward Voltage                      | $I_F = 10\text{ mA}$                                   | 1.10           | 1.43 | 1.80           | V     | 17         |
| $\Delta(V_F / T_A)$ | Temperature Coefficient of Forward Voltage |  | -              | -1.5 | -              | mV/°C |            |
| $BV_R$              | Input Reverse Breakdown Voltage            | $I_R = 10\ \mu\text{A}$                                | 5              | -    | -              | V     |            |
| $C_{IN}$            | Input Capacitance                          | $f = 1\text{ MHz}$ , $V_F = 0\text{ V}$                | -              | 60   | -              | pF    |            |
| $I_{OH}$            | High Level Output Current (Note 1)         | $V_{OH} = V_{DD} - 1\text{ V}$                         | -              | -0.9 | -0.5           | A     | 2, 4       |
|                     |  | $V_{OH} = V_{DD} - 6\text{ V}$                         | -              | -    | -2.5           | A     | 2, 4, 20   |
| $I_{OL}$            | Low Level Output Current (Note 1)          | $V_{OL} = V_{SS} + 1\text{ V}$                         | 0.5            | 1.0  | -              | A     | 5, 7       |
|                     |  | $V_{OL} = V_{SS} + 6\text{ V}$                         | 2.5            | -    | -              | A     | 5, 7, 219  |
| $V_{OH}$            | High Level Output Voltage (Note 7, 8)      | $I_F = 10\text{ mA}$ , $I_O = -2.5\text{ A}$           | $V_{DD} - 7.0$ | -    | -              | V     | 2          |
|                     |  | $I_F = 10\text{ mA}$ , $I_O = -100\text{ mA}$          | $V_{DD} - 0.5$ | -    | -              | V     | 4, 3, 21   |
| $V_{OL}$            | Low Level Output Voltage (Note 7, 8)       | $I_F = 0\text{ mA}$ , $I_O = 2.5\text{ A}$             | -              | -    | $V_{SS} + 7.0$ | V     | 5          |
|                     |  | $I_F = 0\text{ mA}$ , $I_O = 100\text{ mA}$            | -              | -    | $V_{SS} + 0.5$ | V     | 6, 22      |
| $I_{DDH}$           | High Level Supply Current                  | $V_O = \text{Open}$ , $I_F = 7\text{ to }16\text{ mA}$ | -              | 2.9  | 3.5            | mA    | 8, 9, 23   |
| $I_{DDL}$           | Low Level Supply Current                   | $V_O = \text{Open}$ , $V_F = 0\text{ to }0.8\text{ V}$ | -              | 2.8  | 3.5            | mA    | 8, 9, 24   |
| $I_{FLH}$           | Threshold Input Current Low-to-High        | $I_O = 0\text{ mA}$ , $V_O > 5\text{ V}$               | -              | 3.1  | 7.5            | mA    | 10, 16, 25 |
| $V_{FHL}$           | Threshold Input Voltage High-to-Low        | $I_O = 0\text{ mA}$ , $V_O < 5\text{ V}$               | 0.8            | -    | -              | V     | 26         |
| $V_{UVLO+}$         | Under-Voltage Lockout Threshold            | $I_F = 10\text{ mA}$ , $V_O > 5\text{ V}$              | 11.5           | 13.0 | 14.5           | V     | 18, 27     |
| $V_{UVLO-}$         |  | $I_F = 10\text{ mA}$ , $V_O < 5\text{ V}$              | 10.0           | 11.5 | 13.0           | V     | 18, 27     |
| $UVLO_{HYS}$        | Under-Voltage Lockout Threshold Hysteresis |  | -              | 1.5  | -              | V     |            |

Product parametric performance is indicated in the Electrical Characteristics for the listed test conditions, unless otherwise noted. Product performance may not be indicated by the Electrical Characteristics if operated under different conditions.

7. In this test,  $V_{OH}$  is measured with a dc load current of 100 mA. When driving capacitive load  $V_{OH}$  will approach  $V_{DD}$  as  $I_{OH}$  approaches 0 A.  
 8. Maximum pulse width = 1 ms, maximum duty cycle = 20%.

# FOD8384

**SWITCHING CHARACTERISTICS** (Apply over all recommended conditions, typical value is measured at  $V_{DD} = 30\text{ V}$ ,  $V_{SS} = \text{Ground}$ ,  $T_A = 25^\circ\text{C}$  unless otherwise specified.)

| Symbol          | Parameter  | Test Condition  | Min                                       | Typ | Max | Unit                    | Figure                    |
|-----------------|--|---|---|-----|-----|-------------------------|---------------------------|
| $t_{PHL}$       | Propagation Delay Time to Logic LOW Output (Note 9)          | $I_F = 7\text{ mA to }16\text{ mA}$ , $R_g = 10\ \Omega$ ,<br>$C_g = 10\text{ nF}$ , $f = 250\text{ kHz}$ ,<br>Duty Cycle = 50% | 50  | 145 | 210 | ns                      | 11, 12, 13,<br>14, 15, 28 |
| $t_{PLH}$       | Propagation Delay Time to Logic HIGH Output (Note 10)        |   | 50  | 135 | 210 | ns                      | 11, 12, 13,<br>14, 15, 28 |
| PWD             | Pulse Width Distortion (Note 11)<br>$ t_{PHL} - t_{PLH} $    |   | –   | 25  | 65  | ns                      |                           |
| PDD (Skew)      | Propagation Delay Difference Between Any Two Parts (Note 12) |   | –90                                       | –   | 90  |                         |                           |
| $t_R$           | Output Rise Time (10% to 90%)                                |   | –   | 35  | –   | ns                      | 28                        |
| $t_F$           | Output Fall Time (90% to 10%)                                |   | –   | 25  | –   | ns                      | 28                        |
| $t_{ULVO\ ON}$  | ULVO Turn-On Delay   |   | $I_F = 10\text{ mA}$ , $V_O > 5\text{ V}$ | –   | 1.7 | –                       | $\mu\text{s}$             |
| $t_{ULVO\ OFF}$ | ULVO Turn-Off Delay  | $I_F = 10\text{ mA}$ , $V_O < 5\text{ V}$   | –   | 0.1 | –   | $\mu\text{s}$           |                           |
| $ CM_H $        | Common Mode Transient Immunity at Output HIGH                | $T_A = 25^\circ\text{C}$ , $V_{DD} = 30\text{ V}$ , $I_F = 10\text{ to }16\text{ mA}$ , $V_{CM} = 1500\text{ V}$ (Note 13)      | 35  | 50  | –   | $\text{kV}/\mu\text{s}$ | 29                        |
| $ CM_L $        | Common Mode Transient Immunity at Output LOW                 | $T_A = 25^\circ\text{C}$ , $V_{DD} = 30\text{ V}$ , $V_F = 0\text{ V}$ , $V_{CM} = 1500\text{ V}$ (Note 14)                     | 35  | 50  | –   | $\text{kV}/\mu\text{s}$ | 29                        |

9. Propagation delay  $t_{PHL}$  is measured from the 50% level on the falling edge of the input pulse to the 50% level of the falling edge of the  $V_O$  signal.

10. Propagation delay  $t_{PLH}$  is measured from the 50% level on the rising edge of the input pulse to the 50% level of the rising edge of the  $V_O$  signal.

11. PWD is defined as  $|t_{PHL} - t_{PLH}|$  for any given device.

12. The difference between  $t_{PHL}$  and  $t_{PLH}$  between any two FOD8384 parts under the same operating conditions, with equal loads.

13. Common mode transient immunity at output high is the maximum tolerable negative  $dV_{cm}/dt$  on the trailing edge of the common mode impulse signal,  $V_{CM}$ , to ensure that the output remains high (i.e.,  $V_O > 15.0\text{ V}$ ).

14. Common mode transient immunity at output low is the maximum tolerable positive  $dV_{cm}/dt$  on the leading edge of the common pulse signal,  $V_{CM}$ , to ensure that the output remains low (i.e.,  $V_O < 1.0\text{ V}$ ).

TYPICAL PERFORMANCE CHARACTERISTICS

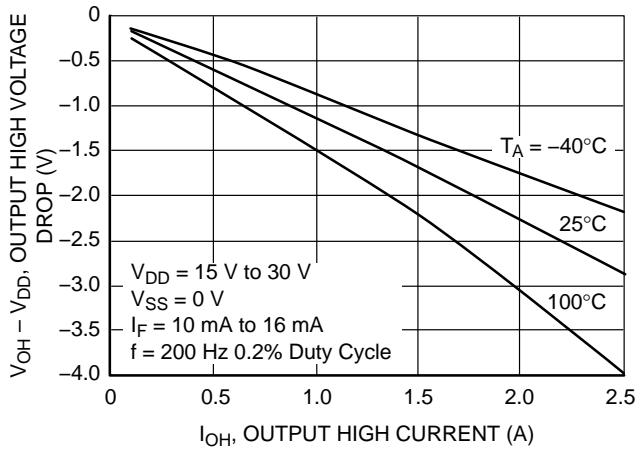


Figure 2. Output High Voltage Drop vs. Output High Current

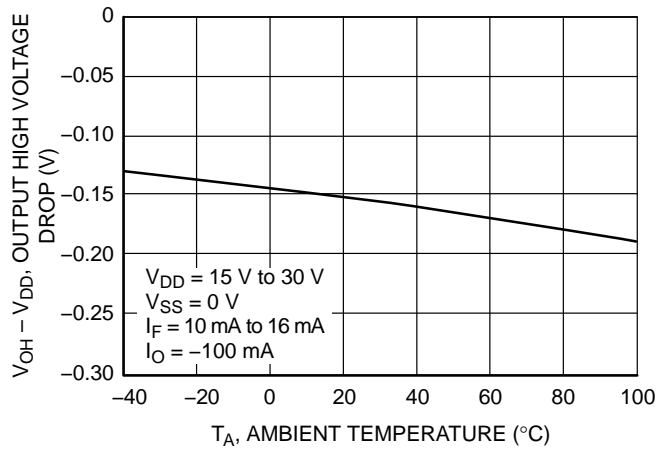


Figure 3. Output High Voltage Drop vs. Ambient Temperature

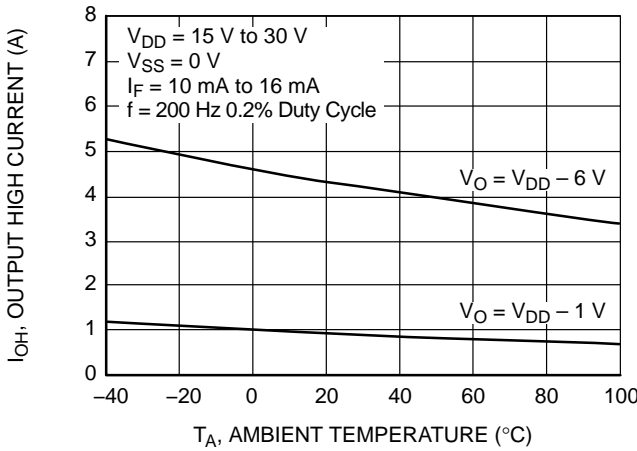


Figure 4. Output High Current vs. Ambient Temperature

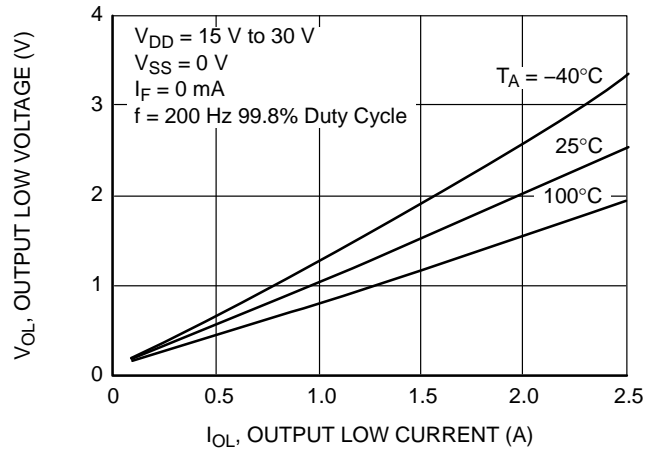


Figure 5. Output Low Voltage vs. Output Low Current

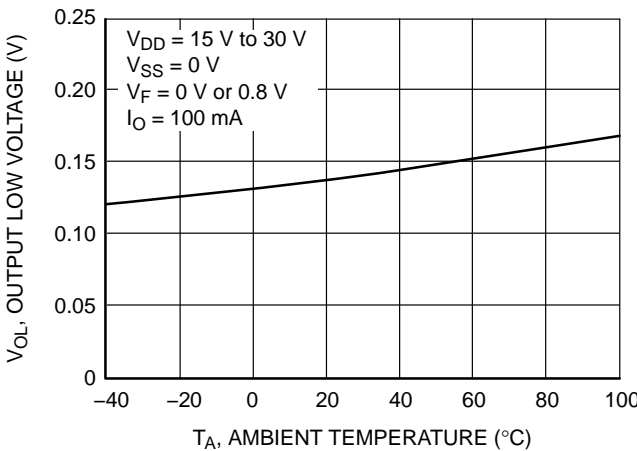


Figure 6. Output Low Voltage vs. Ambient Temperature

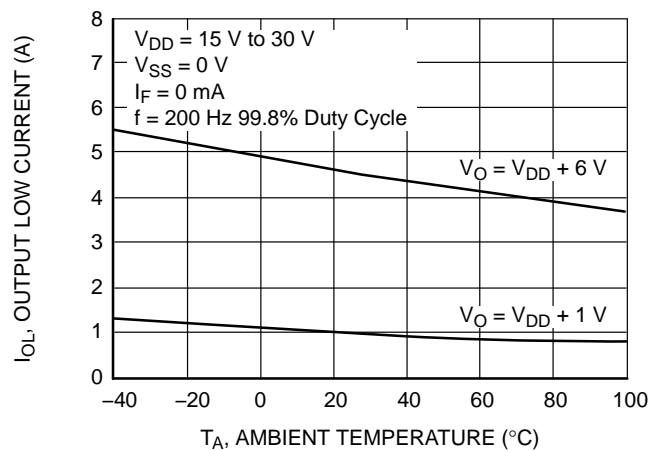


Figure 7. Output Low Current vs. Ambient Temperature

TYPICAL PERFORMANCE CHARACTERISTICS (CONTINUED)

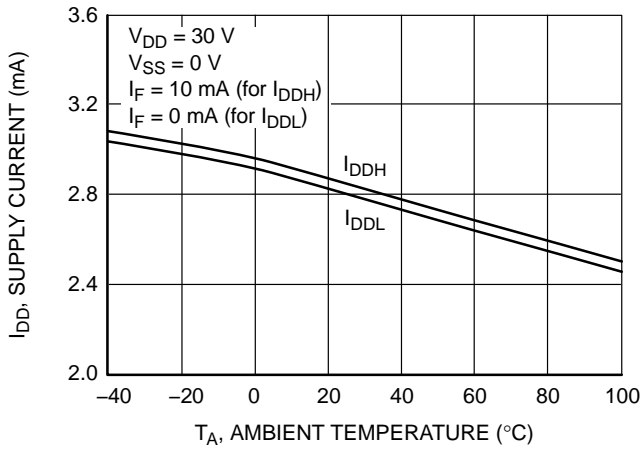


Figure 8. Supply Current vs. Ambient Temperature

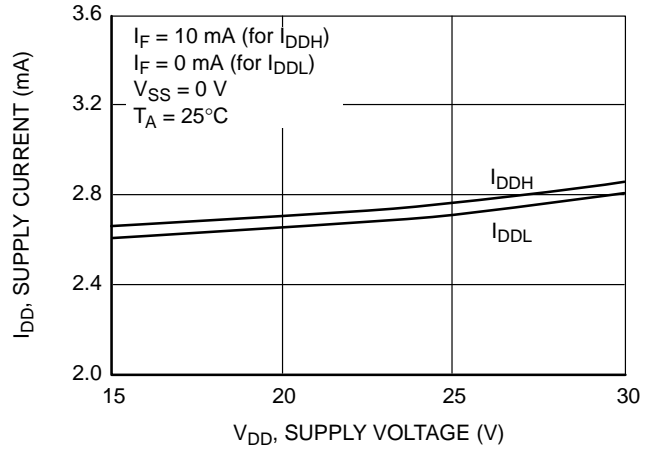


Figure 9. Supply Current vs. Supply Voltage

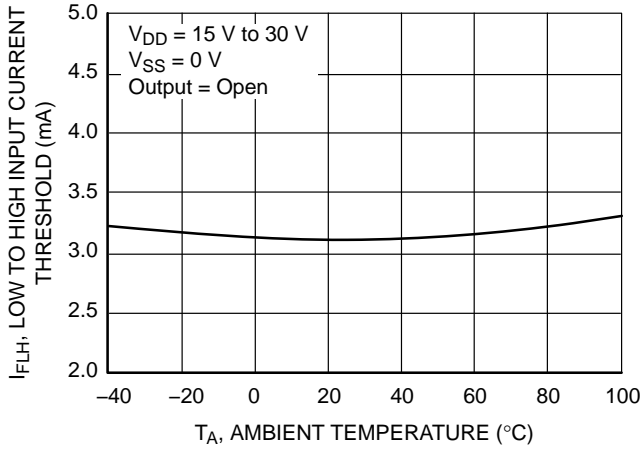


Figure 10. Low-to-High Input Current Threshold vs. Ambient Temperature

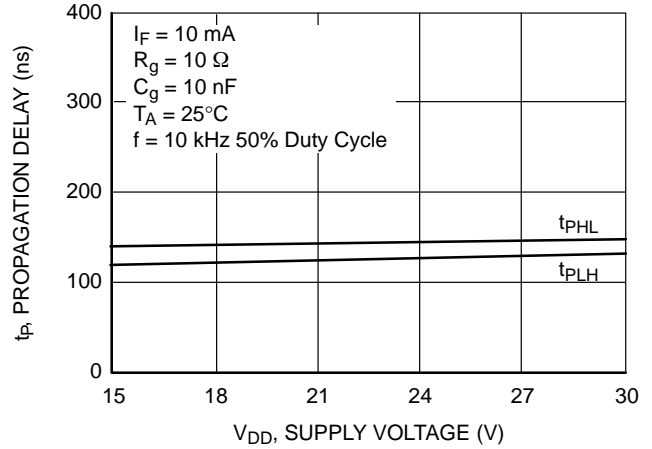


Figure 11. Propagation Delay vs. Supply Voltage

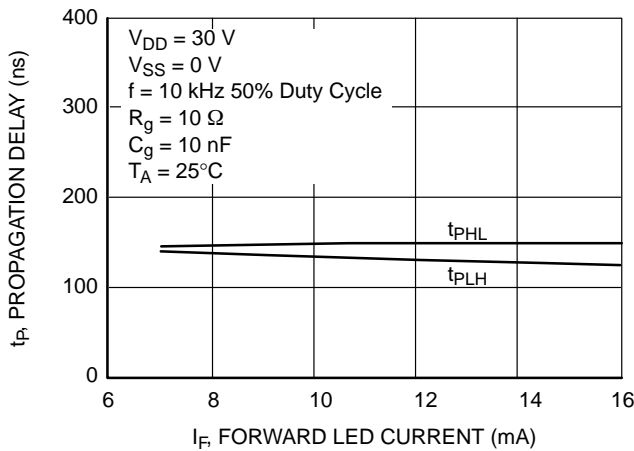


Figure 12. Propagation Delay vs. LED Forward Current

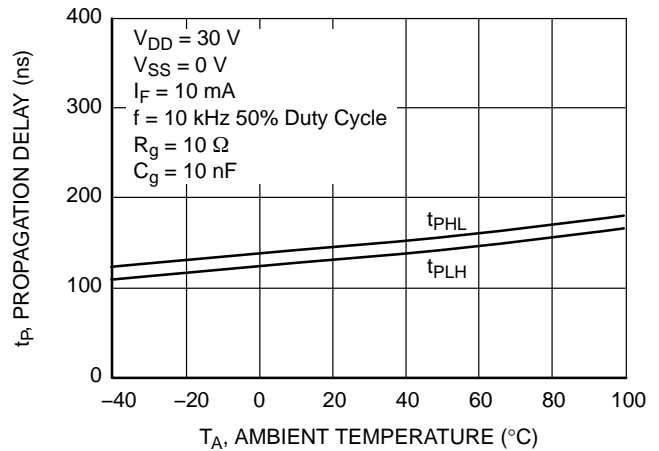


Figure 13. Propagation Delay vs. Ambient Temperature

TYPICAL PERFORMANCE CHARACTERISTICS (CONTINUED)

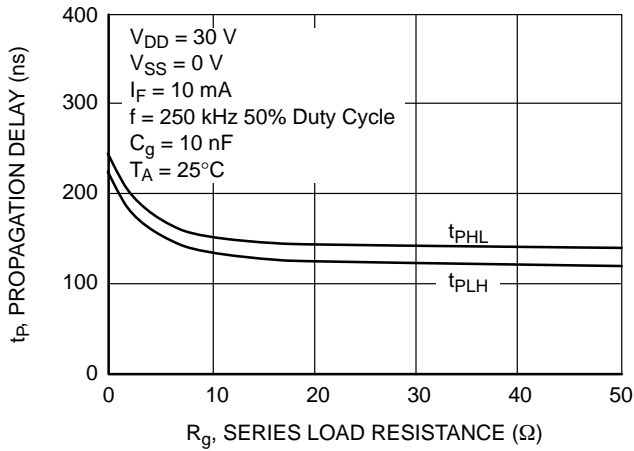


Figure 14. Propagation Delay vs. Series Load Resistance

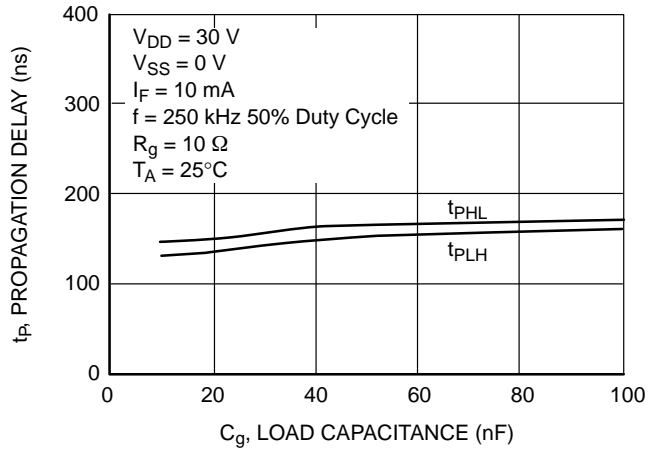


Figure 15. Propagation Delay vs. Load Capacitance

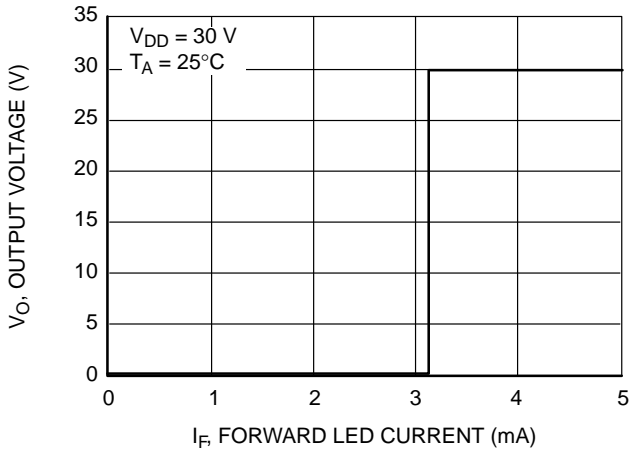


Figure 16. Transfer Characteristics

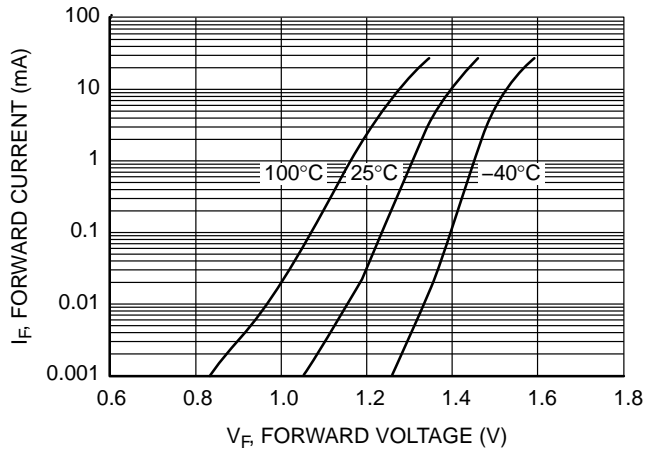


Figure 17. Input Forward Current vs. Forward Voltage

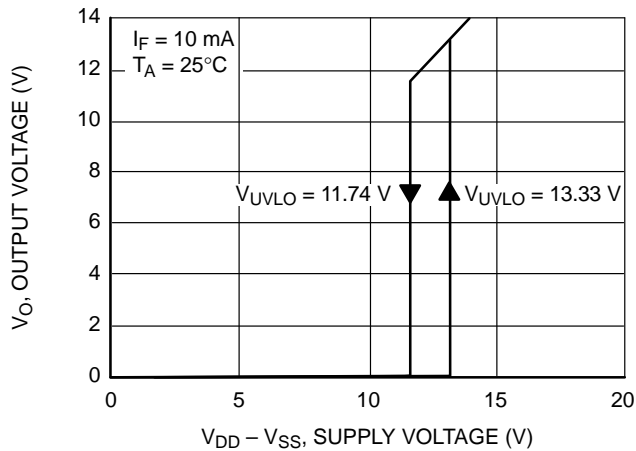
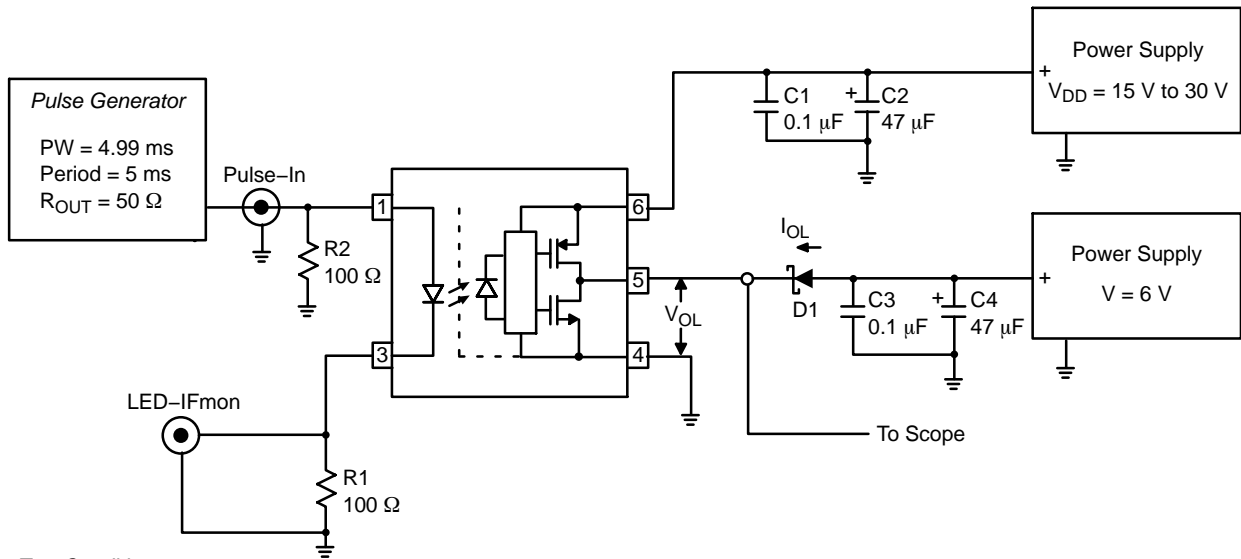


Figure 18. Under-Voltage Lockout

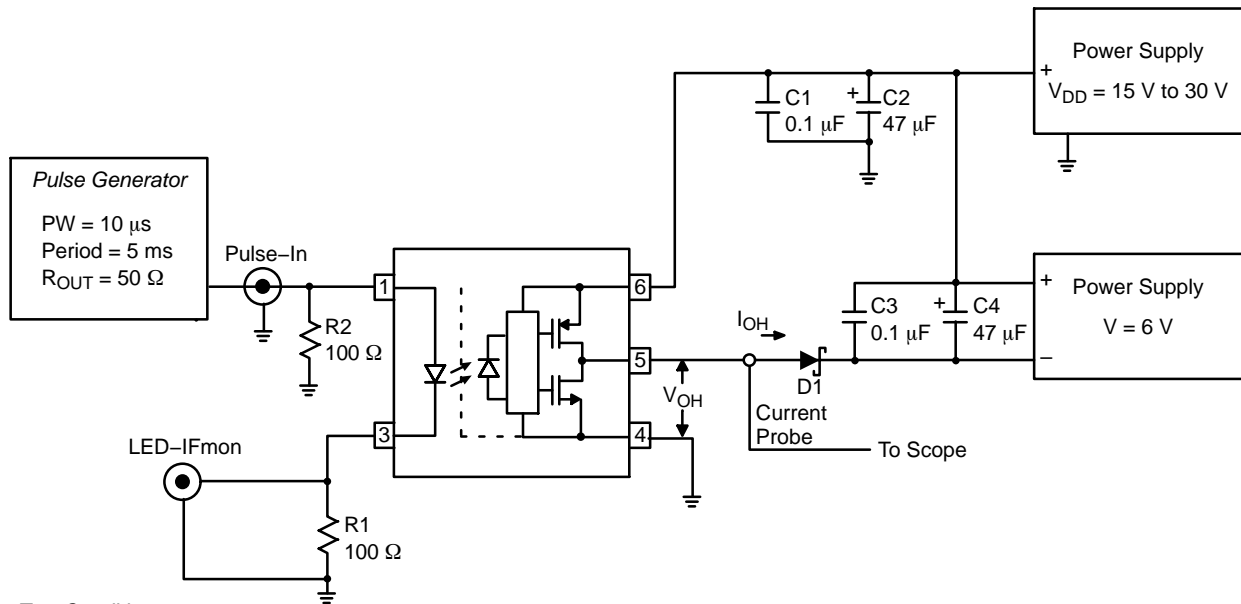
# FOD8384

## TEST CIRCUIT



**Test Conditions:**  
 Frequency = 200 Hz  
 Duty Cycle = 99.8%  
 $V_{DD} = 15\text{ V to }30\text{ V}$   
 $V_{SS} = 0\text{ V}$   
 $I_F = 0\text{ mA}$

Figure 19.  $I_{OL}$  Test Circuit



**Test Conditions:**  
 Frequency = 200 Hz  
 Duty Cycle = 0.2%  
 $V_{DD} = 15\text{ V to }30\text{ V}$   
 $V_{SS} = 0\text{ V}$   
 $I_F = 10\text{ mA to }16\text{ mA}$

Figure 20.  $I_{OH}$  Test Circuit

# FOD8384

## TEST CIRCUIT (CONTINUED)

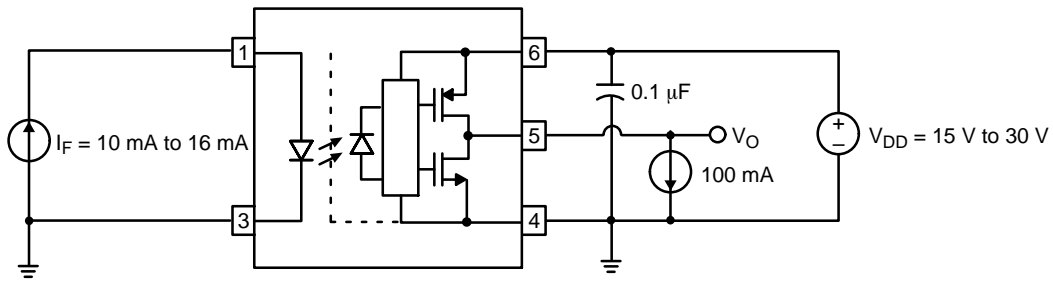


Figure 21.  $V_{OH}$  Test Circuit

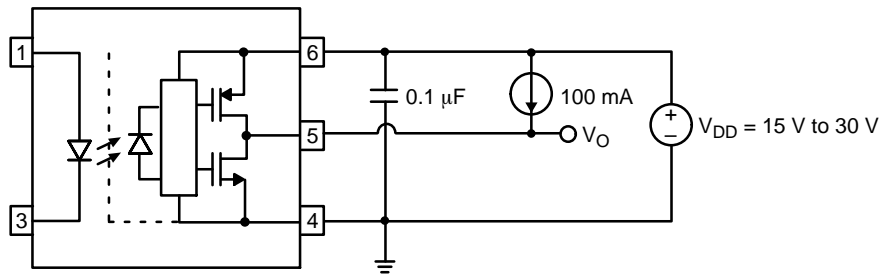


Figure 22.  $V_{OL}$  Test Circuit

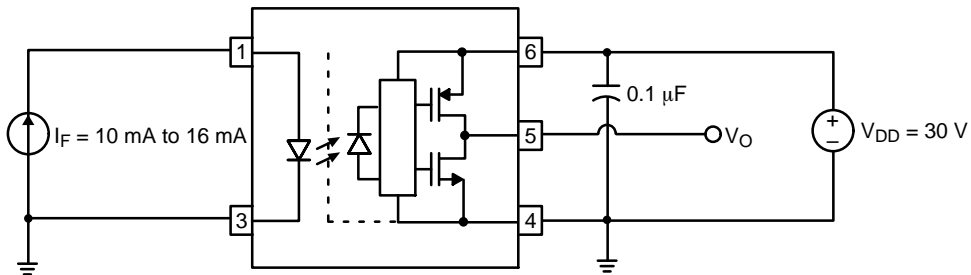


Figure 23.  $I_{DDH}$  Test Circuit

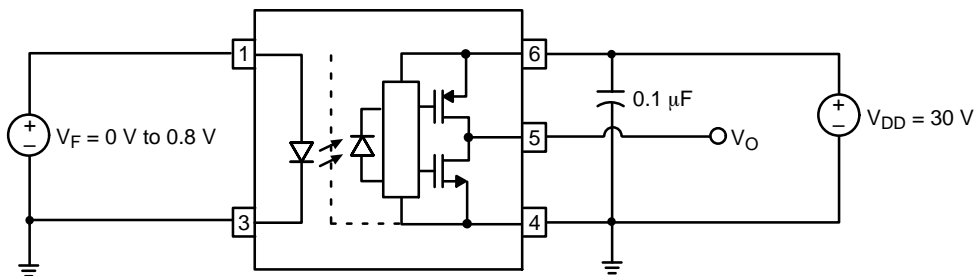


Figure 24.  $I_{DDL}$  Test Circuit

# FOD8384

## TEST CIRCUIT (CONTINUED)

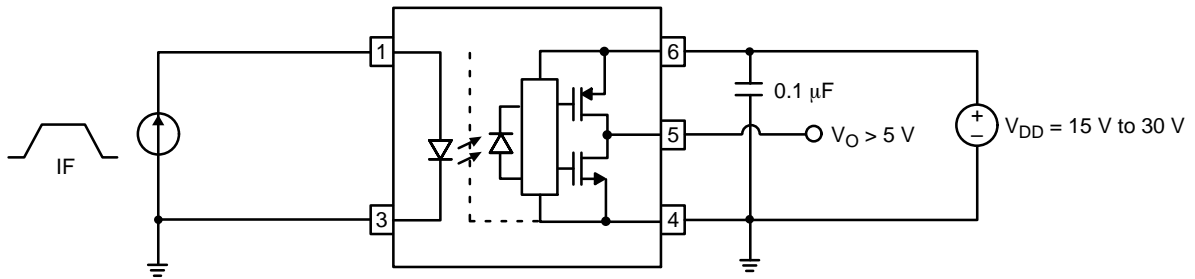


Figure 25.  $I_{FLH}$  Test Circuit

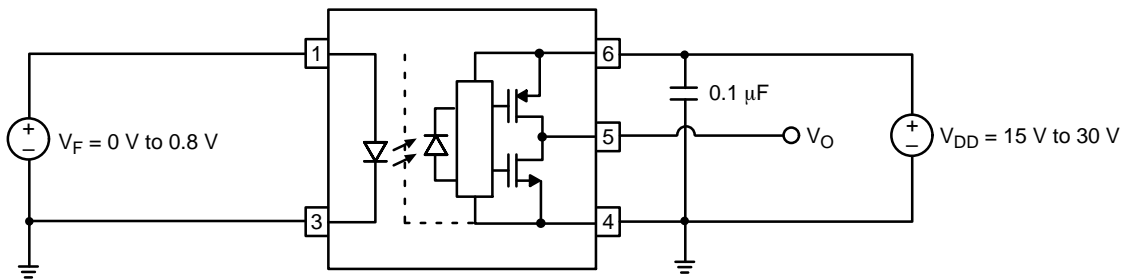


Figure 26.  $V_{FHL}$  Test Circuit

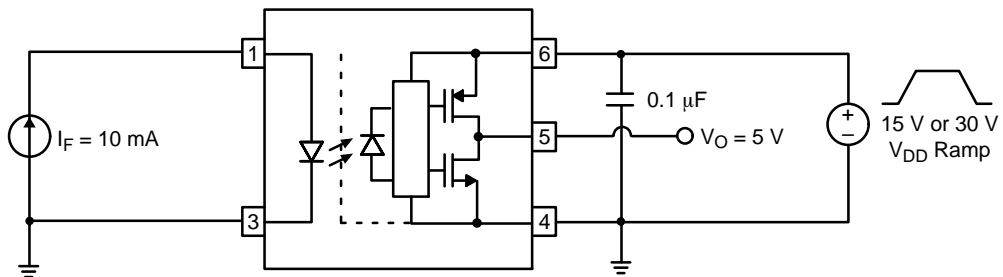
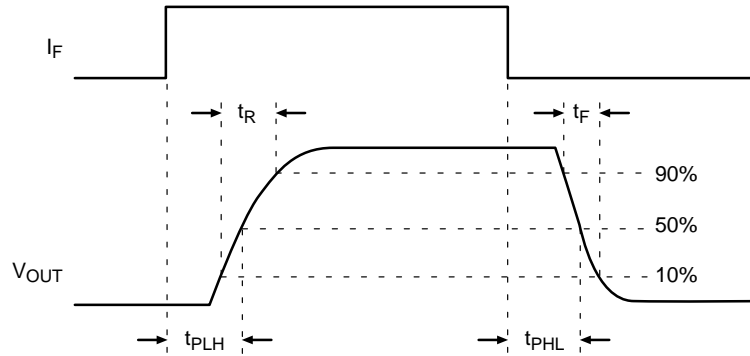
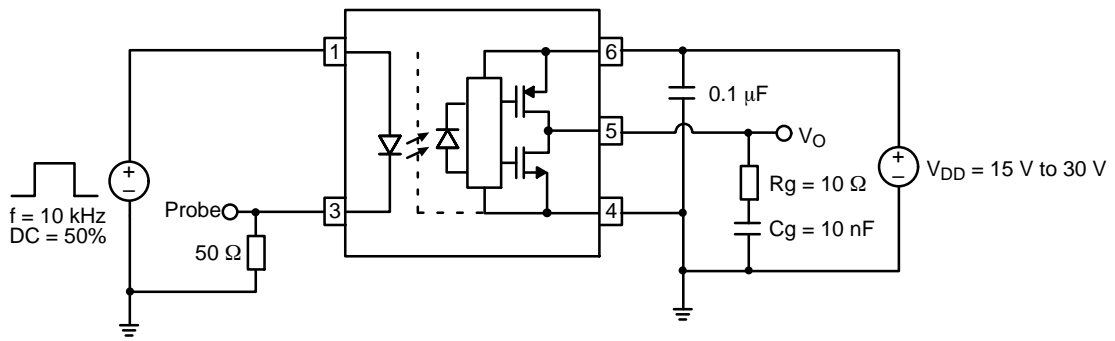


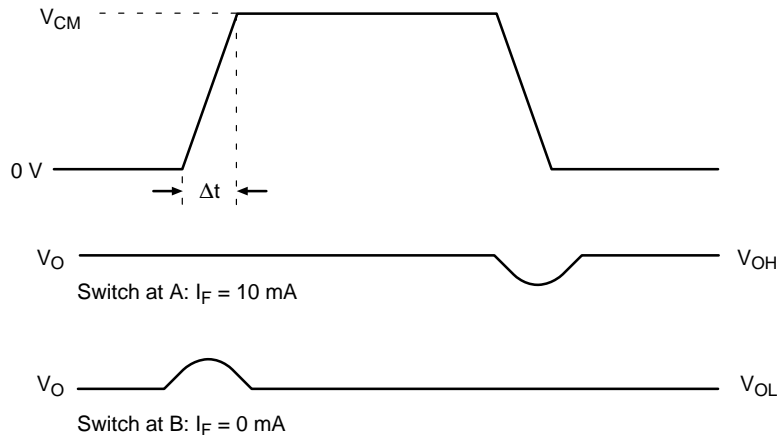
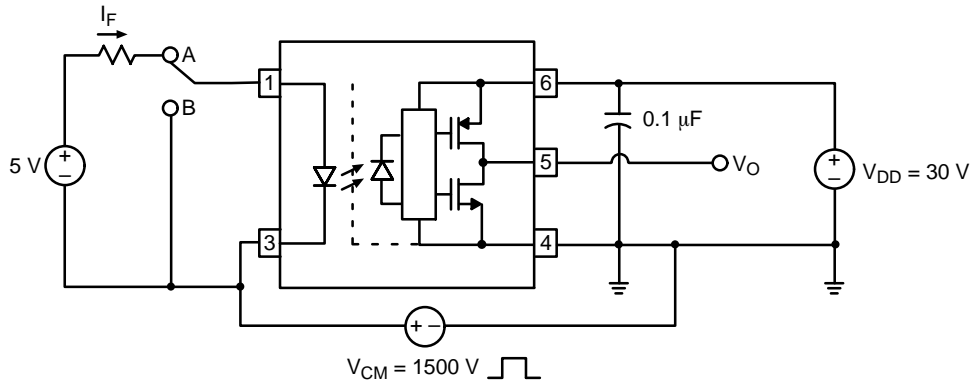
Figure 27. UVLO Test Circuit

# FOD8384

## TEST CIRCUIT (CONTINUED)



**Figure 28.  $t_{PHL}$ ,  $t_{PLH}$ ,  $t_R$ , and  $t_F$  Test Circuit and Waveforms**



**Figure 29. CMR Test Circuit and Waveforms**

REFLOW PROFILE

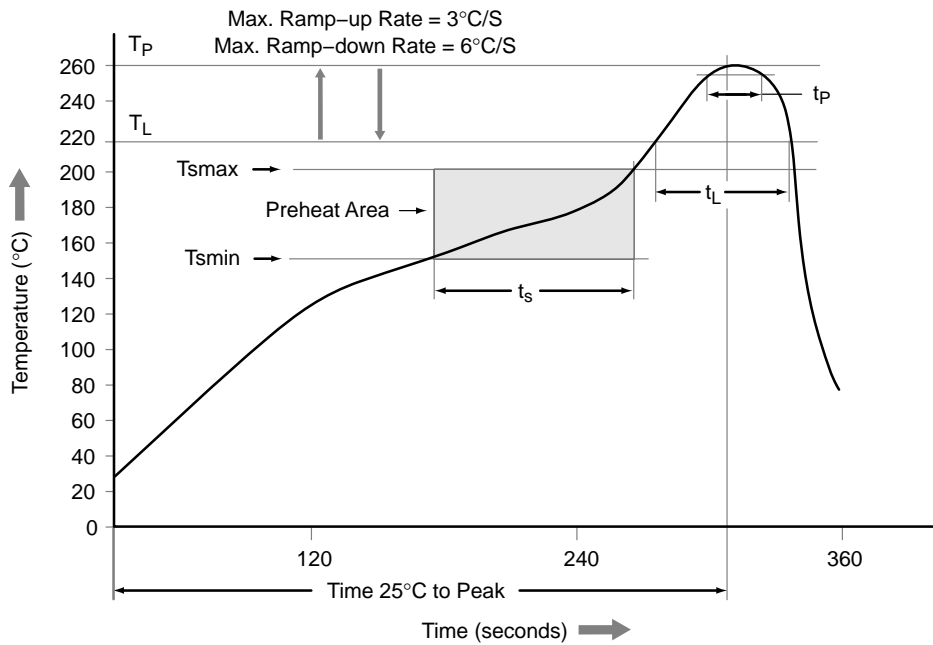


Figure 30. Reflow Profile

| Profile Feature                                  | Pb-Free Assembly Profile |
|--|--------------------------|
| Temperature Minimum ( $T_{smin}$ )               | 150°C                    |
| Temperature Maximum ( $T_{smax}$ )               | 200°C                    |
| Time ( $t_s$ ) from ( $T_{smin}$ to $T_{smax}$ ) | 60 s to 120 s            |
| Ramp-up Rate ( $t_L$ to $t_p$ )                  | 3°C/second maximum       |
| Liquidous Temperature ( $T_L$ )                  | 217°C                    |
| Time ( $t_L$ ) Maintained Above ( $T_L$ )        | 60 s to 150 s            |
| Peak Body Package Temperature                    | 260°C +0°C / -5°C        |
| Time ( $t_p$ ) within 55°C of 260°C              | 30 s                     |
| Ramp-Down Rate ( $T_P$ to $T_L$ )                | 6°C/s maximum            |
| Time 25°C to Peak Temperature                    | 8 minutes maximum        |

# FOD8384

## ORDERING INFORMATION

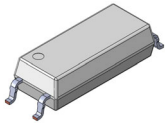
| Part Number | Package   | Shipping†                 |
|-------------|---|---------------------------|
| FOD8384     | SOIC6 W LESS PIN 2, Wide Body SOP 5-Pin<br>(Pb-Free)                              | 100 Units / Tube          |
| FOD8384R2   | SOIC6 W LESS PIN 2, Wide Body SOP 5-Pin<br>(Pb-Free)                              | 1,000 Units / Tape & Reel |
| FOD8384V    | SOIC6 W LESS PIN 2, Wide Body SOP 5-Pin, DIN EN/IEC60747-5-5 Option<br>(Pb-Free)  | 100 Units / Tube          |
| FOD8384R2V  | SOIC6 W LESS PIN 2, Wide Body SOP 5-Pin, DIN EN/ IEC60747-5-5 Option<br>(Pb-Free) | 1,000 Units / Tape & Reel |

†For information on tape and reel specifications, including part orientation and tape sizes, please refer to our Tape and Reel Packaging Specifications Brochure, BRD8011/D.

15. All packages are lead free per JEDEC: J-STD-020B standard.

OPTOPLANAR is registered trademark of Semiconductor Components Industries, LLC dba "onsemi" or its affiliates and/or subsidiaries in the United States and/or other countries.

# MECHANICAL CASE OUTLINE PACKAGE DIMENSIONS

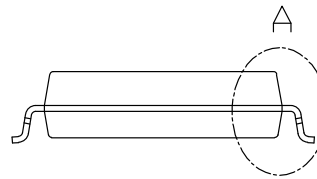
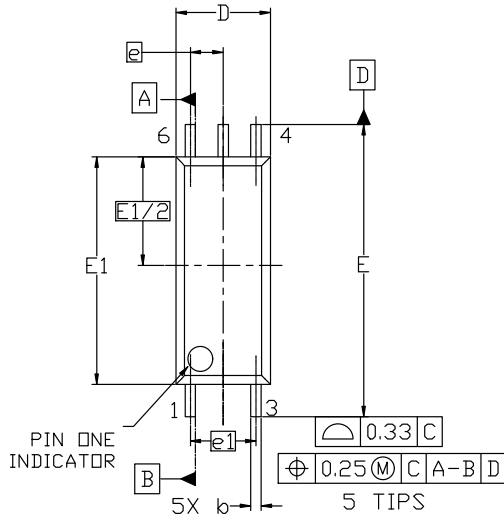


**SOIC5 (6) 3.65x8.80x2.55, 1.27P**  
CASE 752AG  
ISSUE B

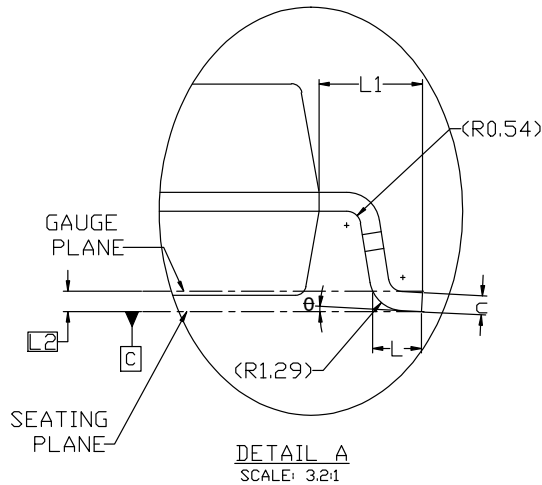
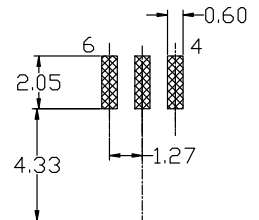
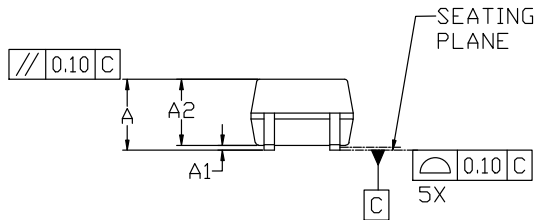
DATE 24 JUL 2023

NOTES: UNLESS OTHERWISE SPECIFIED

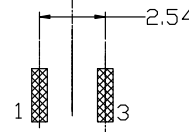
- A) THIS PACKAGE DOES NOT CONFORM TO ANY STANDARD.
- B) ALL DIMENSIONS ARE IN MILLIMETERS.
- C) DIMENSIONS ARE EXCLUSIVE OF BURRS, MOLD FLASH AND TIE BAR PROTRUSIONS
- D) DRAWING CONFORMS TO ASME Y14.5M-1994



| DIM  | MILLIMETER |       |       |
|------|------------|-------|-------|
|      | MIN.       | NOM.  | MAX.  |
| A    | --         | --    | 2.95  |
| A1   | 0.10       | 0.20  | 0.30  |
| A2   | 2.45       | 2.55  | 2.65  |
| b    | 0.31       | 0.41  | 0.51  |
| c    | 0.19       | 0.22  | 0.25  |
| D    | 3.55       | 3.65  | 3.75  |
| E    | 11.20      | 11.30 | 11.40 |
| E1   | 8.70       | 8.80  | 8.90  |
| E1/2 | 4.20 BSC   |       |       |
| e    | 1.27 BSC   |       |       |
| e1   | 2.54 BSC   |       |       |
| L    | 0.44       | 0.59  | 0.74  |
| L1   | 1.15       | 1.25  | 1.35  |
| L2   | 0.25 BSC   |       |       |
| θ    | 0°         | --    | 8°    |



LAND PATTERN  
RECOMMENDATION



\*FOR ADDITIONAL INFORMATION ON OUR PB-FREE STRATEGY AND SOLDERING DETAILS, PLEASE DOWNLOAD THE ON SEMICONDUCTOR SOLDERING AND MOUNTING TECHNIQUES REFERENCE MANUAL, SOLDERRM/D.

|                         |  |  |
|-------------------------|--|--|
| <b>DOCUMENT NUMBER:</b> | <b>98AON13752G</b>                     | Electronic versions are uncontrolled except when accessed directly from the Document Repository. Printed versions are uncontrolled except when stamped "CONTROLLED COPY" in red. |
| <b>DESCRIPTION:</b>     | <b>SOIC5 (6) 3.65x8.80x2.55, 1.27P</b> | <b>PAGE 1 OF 1</b>   |

onsemi and ONSEMI are trademarks of Semiconductor Components Industries, LLC dba onsemi or its subsidiaries in the United States and/or other countries. onsemi reserves the right to make changes without further notice to any products herein. onsemi makes no warranty, representation or guarantee regarding the suitability of its products for any particular purpose, nor does onsemi assume any liability arising out of the application or use of any product or circuit, and specifically disclaims any and all liability, including without limitation special, consequential or incidental damages. onsemi does not convey any license under its patent rights nor the rights of others.

**onsemi**, **Onsemi**, and other names, marks, and brands are registered and/or common law trademarks of Semiconductor Components Industries, LLC dba "**onsemi**" or its affiliates and/or subsidiaries in the United States and/or other countries. **onsemi** owns the rights to a number of patents, trademarks, copyrights, trade secrets, and other intellectual property. A listing of **onsemi**'s product/patent coverage may be accessed at [www.onsemi.com/site/pdf/Patent-Marking.pdf](http://www.onsemi.com/site/pdf/Patent-Marking.pdf). **onsemi** reserves the right to make changes at any time to any products or information herein, without notice. The information herein is provided "as-is" and **onsemi** makes no warranty, representation or guarantee regarding the accuracy of the information, product features, availability, functionality, or suitability of its products for any particular purpose, nor does **onsemi** assume any liability arising out of the application or use of any product or circuit, and specifically disclaims any and all liability, including without limitation special, consequential or incidental damages. Buyer is responsible for its products and applications using **onsemi** products, including compliance with all laws, regulations and safety requirements or standards, regardless of any support or applications information provided by **onsemi**. "Typical" parameters which may be provided in **onsemi** data sheets and/or specifications can and do vary in different applications and actual performance may vary over time. All operating parameters, including "Typicals" must be validated for each customer application by customer's technical experts. **onsemi** does not convey any license under any of its intellectual property rights nor the rights of others. **onsemi** products are not designed, intended, or authorized for use as a critical component in life support systems or any FDA Class 3 medical devices or medical devices with a same or similar classification in a foreign jurisdiction or any devices intended for implantation in the human body. Should Buyer purchase or use **onsemi** products for any such unintended or unauthorized application, Buyer shall indemnify and hold **onsemi** and its officers, employees, subsidiaries, affiliates, and distributors harmless against all claims, costs, damages, and expenses, and reasonable attorney fees arising out of, directly or indirectly, any claim of personal injury or death associated with such unintended or unauthorized use, even if such claim alleges that **onsemi** was negligent regarding the design or manufacture of the part. **onsemi** is an Equal Opportunity/Affirmative Action Employer. This literature is subject to all applicable copyright laws and is not for resale in any manner.

## ADDITIONAL INFORMATION

### TECHNICAL PUBLICATIONS:



Technical Library: [www.onsemi.com/design/resources/technical-documentation](http://www.onsemi.com/design/resources/technical-documentation)  
onsemi Website: [www.onsemi.com](http://www.onsemi.com)

### ONLINE SUPPORT: [www.onsemi.com/support](http://www.onsemi.com/support)

For additional information, please contact your local Sales Representative at [www.onsemi.com/support/sales](http://www.onsemi.com/support/sales)

## Looking for pricing, stock, or lifecycle information?

Click below to explore more details on WIN SOURCE:

-  [View FOD8384 on WIN SOURCE](#)
-  [ON Semiconductor](#) Information

## Optimize Your Supply Chain with WIN SOURCE Solutions

-  Global Sourcing Solution
-  Obsolete Management
-  Cost Control Management
-  Shortage Management
-  Alternative Solution
-  Excess Inventory Management