

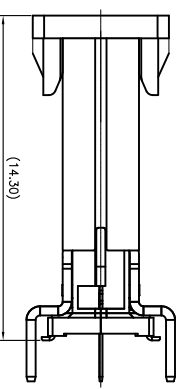
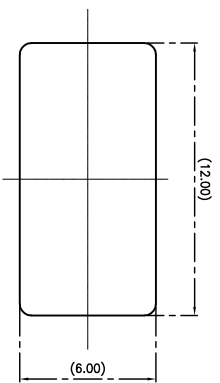
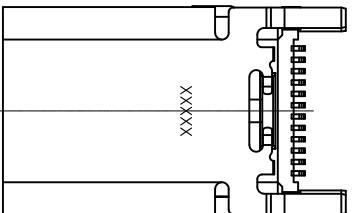


**THE DATASHEET OF
USB-C31-S-VT-CS4-BK-PP-T/R**

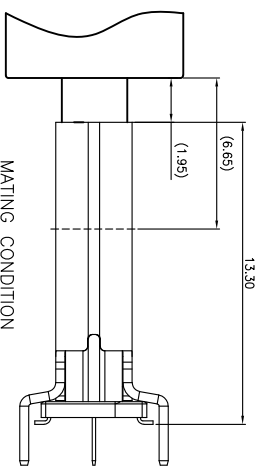
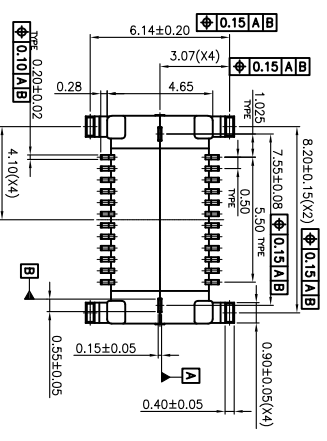
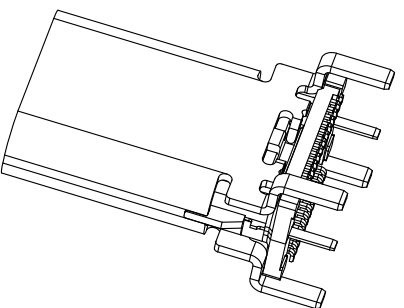
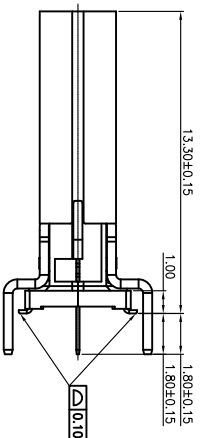
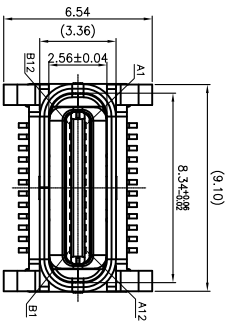
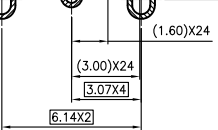


Rev	AWO #	Description	Date	Appr
-		RELEASED	10/25/18	
A		UPDATE DRAWING	9/19/19	LH/KC

Signal Name	Mating Sequence
12 GND	First
11 SSRXp1	Second
10 SSRM1	Second
9 Vias	First
8 SBU2	Second
7 Dm2	Second
6 CC2	Second
5 Vias	First
4 SSTXp2	Second
2 SSTXp2	Second
1 GND	First
GND	First



INCREASE THE DIAGRAMS OF CAP



UL 94V-0
ROUT
contact area,
der tails.

A1, A4, A9, A12, B1, B4, B9, B12)

ohms change after test,
100 mPa

PACKAGED ON TAPE & REEL

UNLESS OTHERWISE SPECIFIED
ALL DIMENSIONS ARE MILLIMETERS
TOLERANCES: EXCEPT AS NOTED
MM ANGLE ±2°
X ± 0.50
X.X ± 0.30
X.XX ± 0.20
X.XXX ± 0.10

APPROVALS	DATE
DRAWN AY	10/25/18
CHECKED CK	10/25/18
APPROVED	

ADAM TECH
909 Rahway Avenue,
Union, NJ 07083
Phone: 908-687-5000
Fax: 908-687-5710

TITLE: UNIVERSAL SERIAL BUS, TYPE C 3.1, FEMALE,
VERTICAL, SMT, BLACK INSULATOR, TAPE AND REEL
INTERCONNECTS
SIZE: X
PART NO.: USB-C31-S-VT-CS4-BK-PP-T/R
REV: A
REF: S00296T
SCALE: NTS
SHEET 1 OF 1



Looking for pricing, stock, or lifecycle information?

Click below to explore more details on WIN SOURCE:

- ⊖ [View USB-C31-S-VT-CS4-BK-PP-T/R on WIN SOURCE](#)
- ⊖ [Adam Technologies, Inc. Information](#)

Optimize Your Supply Chain with WIN SOURCE Solutions

- ✓ Global Sourcing Solution
- ✓ Obsolete Management
- ✓ Cost Control Management
- ✓ Shortage Management
- ✓ Alternative Solution
- ✓ Excess Inventory Management