




THE DATASHEET OF
531-40047-3

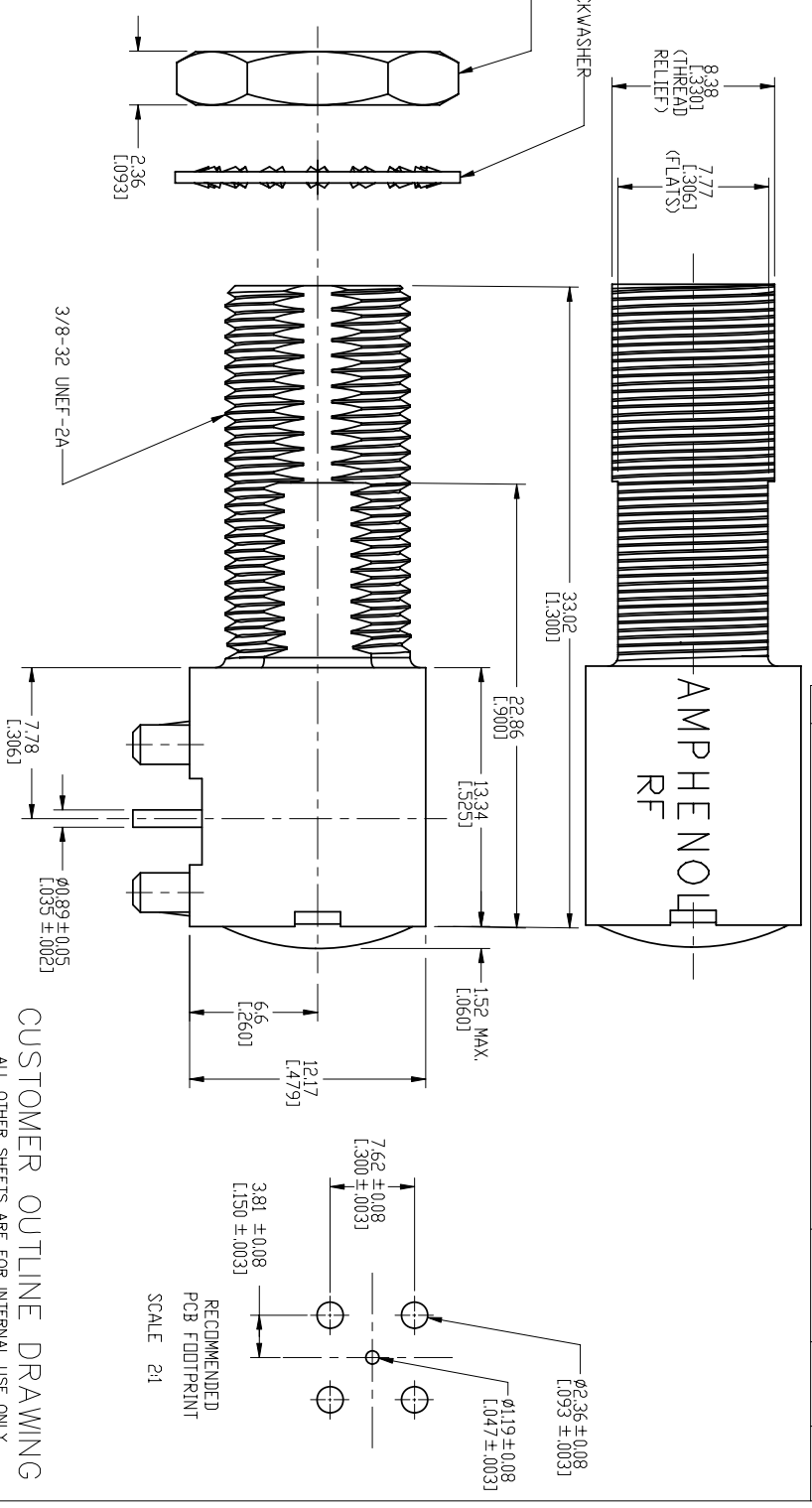


THE
FUNCTION
THE EVENT
S WILL BE

THIRD ANGLE PROJ. 

REVISIONS

REV	DESCRIPTION	DATE	ECD	APPR
A	RELEASE TO MFG.	19-May-99	42958	CPM
B	A) CONTACT WAS: PHOSPHOR BRONZE B) INSULATOR WAS: POLYPROPYLENE	3/13/03	44395	BCG
C	ADD ALITERANTE BOM REF	8/1/05	45645	CPM
D	.437 WAS SQ	09/21/06	45794	BRUCE
DI	2.92±0.25 WAS 2.92±0.02	26-Oct-06		BRUCE
E	BDDY AND NUT-HEX WERE CHANGED	29-Jan-07		CISSY
EI	NUT-HEX WAS CHANGED	02-Feb-07		CISSY
F	BDDY WAS CHANGED	13-08-'07		AW
G	NUT-HEX WAS CHANGED	18-Mar-'08		AW
H	SEE SHEET 1/RD-DM09091601K	18-Sep-09	47802	SH
J	TITLE BLOCK WAS CHANGED	18-Jan-10	47955	AC
K	LOCK WASHER WAS CHANGED/RD-DM11121501F	30-Dec-11	48832	SH
L	ADD INCH DIMENSION	17-Jul-12	49138	SH



RECOMMENDED
PCB FOOTPRINT
SCALE 2:1

CUSTOMER OUTLINE DRAWING

ALL OTHER SHEETS ARE FOR INTERNAL USE ONLY.

MATERIAL	DATE	TITLE		DRAWING NO.	
	19-Jun-12	F (FEMALE)		531-40047-3	
ENGINEER	DATE	PCB RT. ANGLE		Dorbury CT USA, Tainan Taiwan, Shenzhen China	
S.L.I	19-Jun-12	W/HARDWARE		www.amphenolrf.com	
APPROVED	DATE	SCALE: 4/1	SHEET 2 OF 2	ITEM NO.	531-40047-3
S.H.SI.H	19-Jun-12	DWG SIZE	CODE ID	REV	
CAD FILE		B	74868	L	
FINISH	F:\DWG\CNPD\531\40047\3-KSZ				PART NO. 531-40047-3

Looking for pricing, stock, or lifecycle information?

Click below to explore more details on WIN SOURCE:

- [View 531-40047-3 on WIN SOURCE](#)
- [Amphenol FCI Information](#)

Optimize Your Supply Chain with WIN SOURCE Solutions

- ✓ Global Sourcing Solution
- ✓ Obsolete Management
- ✓ Cost Control Management
- ✓ Shortage Management
- ✓ Alternative Solution
- ✓ Excess Inventory Management