



THE DATASHEET OF CR4220S-10



Loop-Powered AC Current Transmitter

DIN RAIL / PANEL MOUNT, AVERAGE RMS

The **CR4200** Series, Current Transmitters produce a calibrated 4-20 mADC signal that is proportional to the average RMS input AC current. Designed for multi-point current sensing, these devices provide excellent features in a value package. The output signal is generated from a user supplied 24 VDC power supply within the output current loop.



CR4220

Single Element - .79" Window
0.5 to 50 AAC Input Range



CR4260

Two Element - .26" Window
0.5 to 30 AAC Input Range

Applications

- Multi-point current sensing and control panels
- Remote current sensing
- Monitor motor faults
- Monitor heating elements
- Monitor lighting elements

Features

- Relatively low cost
- 35mm DIN rail or panel mount
- High Accuracy
- Easy wiring
- Interfaces with most commercially available instrumentation
- Connection diagram printed on case

Regulatory Agencies

- Recognized to meet UL 61010B-1
- Constructed to meet CAN/CSA-C22.2, No. 61010-1-2004
- Meets requirement of IEC 61010-1 and BS EN 61010-1

C
Transducers

CR Magnetics has a wide selection of current transformers to extend the range of any part. Contact factory for more information.



All single phase current transducers are available in split core design. Simply put an "S" at the end of the prefix*
I.E. CR4220S-10
*** Not UL Recognized**

| PART NUMBERS | | | |
|--|---|--|--|
| CR4220(S) | - | | Single element with 4 - 20 mADC output (split core design) |
| CR4260 | - | | Two element with 4 - 20 mADC output* |
| *Two element transducers are only available in ranges of 0.5 to 30 AAC | | | |

Add suffix for input range

- 5** - 0- 5 AAC
- 10** - 0-10 AAC
- 15** - 0-15 AAC
- 20** - 0-20 AAC
- 25** - 0-25 AAC
- 30** - 0-30 AAC
- 40** - 0-40 AAC
- 50** - 0-50 AAC

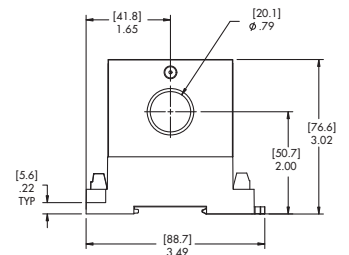
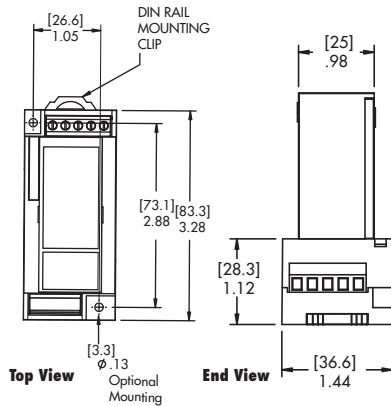
Ranges available up to and including 600 AAC

Loop-Powered AC Current Transmitter

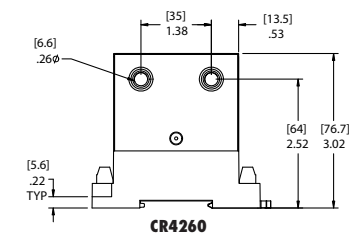
DIN RAIL / PANEL MOUNT, AVERAGE RMS

SPECIFICATIONS

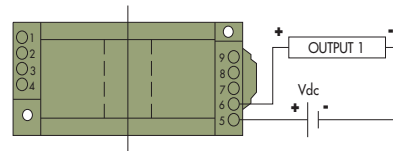
| | | | |
|-----------------------------|---------------------------------|--------------------------|---------------------------|
| Basic Accuracy:..... | 0.5% | MTBF:..... | Greater than 100 K |
| Linearity:..... | 10% to 100% FS | Cleaning:..... | Water-dampened cloth |
| Thermal Drift:..... | 500 PPM/°C | Output Load:..... | 0 to 500 Ω |
| Operating Temperature:..... | 0°C to +60°C | Response Time:..... | 250 ms max., 0-90%FS |
| Installation Category:..... | CAT II | Relative Humidity:..... | 5% to 95%, Non-Condensing |
| Vibration Tested To:..... | IEC 60068-2-6,1995 | Supply Power:..... | Loop Voltage 24 Vdc |
| Pollution Degree:..... | 2 | Compliance Voltage:..... | 16 to 28 Vdc |
| Insulation Voltage:..... | 2500 VDC | Torque Specs:..... | 3.0 inch lbs. (0.4Nm) |
| Altitude:..... | 2000 meter max. | Weight:..... | 0.5 lbs. |
| Frequency Range:..... | 50Hz - 400 Hz | | |
| Calibration:..... | Average Sensing, RMS Calibrated | | |



CR4220

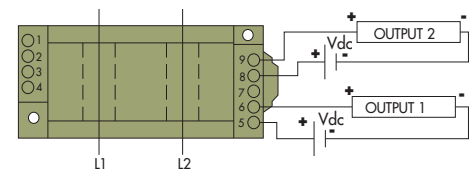


CR4260



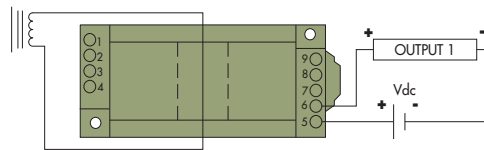
CR4220

One Element - 4 - 20 mADC Output



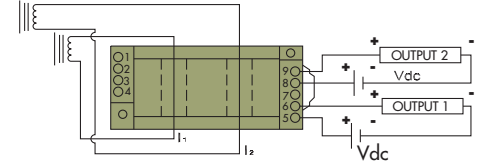
CR4260

Two Element 4 - 20 mADC Output



CR4220

One Element with external current transformer *



CR4260

Two Element with external current transformer *

*Request CR Magnetics Low & Medium Voltage Current Transformers Catalog.

OUTLINE DRAWING

CONNECTION DIAGRAM

NOTE: The building installation must have a switch or circuit-breaker that is in close proximity and within easy reach of the operator. The switch or circuit breaker shall be marked as the disconnecting device for the equipment.

Looking for pricing, stock, or lifecycle information?

Click below to explore more details on WIN SOURCE:

 [View CR4220S-10 on WIN SOURCE](#)

 [CR Magnetics Inc. Information](#)

Optimize Your Supply Chain with WIN SOURCE Solutions

-  Global Sourcing Solution
-  Obsolete Management
-  Cost Control Management
-  Shortage Management
-  Alternative Solution
-  Excess Inventory Management