



**THE DATASHEET OF
CR4410S-15**



Average RMS AC Current Transducer

DIN RAIL / PANEL MOUNT, AVERAGE RMS



CR4410 CR4411 CR4420

Single Element - .79" Window
0.5 to 600 AAC Input Range



CR4450 CR4460

Two Element - .26" Window
0.5 to 30 AAC Input Range



CR4470 CR4480

Three Element - .26" Window
0.5 to 30 AAC Input Range

Use a 5 Amp Secondary Current Transformer to extend the ranges of all CR Magnetics Current Transducers



The **CR4400** Series, Current Transducers and Transmitters are designed to produce a DC output signal that is proportional to the average RMS input AC current. Designed for multi-point current sensing, these devices provide excellent features in a value package .

Applications

- Multi-point current sensing and control panels
- Monitor motor faults
- Monitor heating elements
- Monitor lighting elements

Features

- Low cost
 - DIN rail or panel mount
 - Available with 0-5 VDC, 0-10VDC or 4-20 mADC output
 - High Accuracy
 - Interfaces with most commercially available instrumentation
- Connection diagram printed on case

Regulatory Agencies

- Recognized to meet UL 61010B-1
- Constructed to meet CAN/CSA-C22.2, No. 61010-1-2004
- Meets requirement of IEC 61010-1 and BS EN 61010-1



All single phase current transducers are available in split core design. Simply put an "S" at the end of the prefix*
I.E. CR4410S-10
*** Not UL Recognized**

PART NUMBERS

| | | | |
|-----------|---|--|--|
| CR4410(S) | - | | Single element with 0 - 5 VDC output (split core design) |
| CR4411(S) | - | | Single element with 0 - 10 VDC output (split core design)* |
| CR4420(S) | - | | Single element with 4 - 20 mADC output (split core design) |
| CR4450 | - | | Two element with 0 - 5 VDC output * |
| CR4460 | - | | Two element with 4 to 20 mADC output * |
| CR4470 | - | | Three element with 0 - 5 VDC output * |
| CR4480 | - | | Three element with 4 - 20 mADC output * |

Two and three element transducers are available only in ranges of 0.5 to 30 AAC

Add suffix for input range

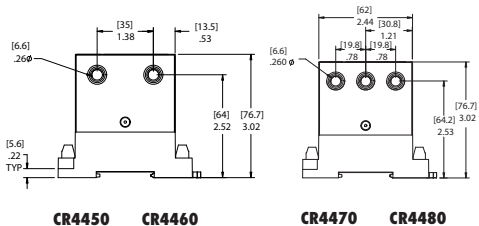
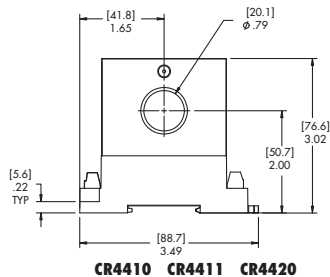
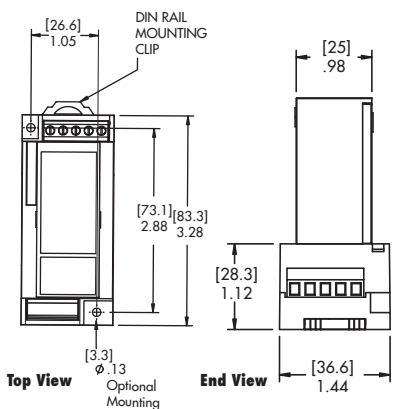
- 5** - 0-5 AAC
- 10** - 0-10 AAC
- 15** - 0-15 AAC
- 20** - 0-20 AAC
- 25** - 0-25 AAC
- 30** - 0-30 AAC
- 40** - 0-40 AAC
- 50** - 0-50 AAC
- 75** - 0-75 AAC
- 100** - 0-100 AAC
- 150** - 0-150 AAC

Ranges available up to and including 600 AAC

Transducers

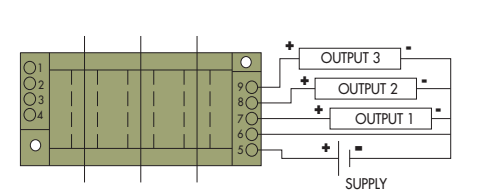
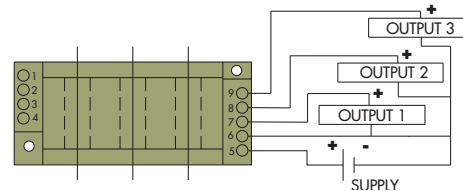
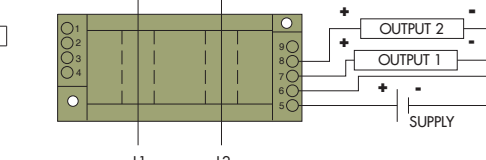
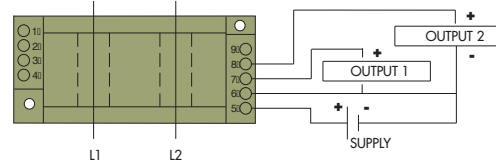
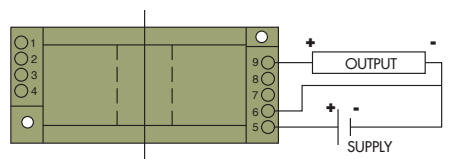
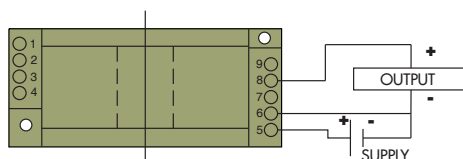
SPECIFICATIONS

| | | | |
|-----------------------------|---------------------------------|-------------------------|---------------------------|
| Basic Accuracy:..... | 0.5% | Cleaning:..... | Water-dampened cloth |
| Linearity:..... | 10% to 100% FS | Relative Humidity:..... | 5% to 95%, Non-Condensing |
| Thermal Drift:..... | 500 PPM/°C | Supply Voltage:..... | 24 VDC ±10% |
| Operating Temperature:..... | 0°C to +60°C | Supply Current: | |
| Installation Category:..... | CAT II | CR4410/11..... | Typical 20mA Max 40mA |
| Vibration Tested To:..... | IEC 60068-2-6,1995 | CR4420..... | Typical 25mA Max 45mA |
| Pollution Degree:..... | 2 | CR4450..... | Typical 20mA Max 75mA |
| Response Time:..... | 250 ms max., 0-90% FS | CR4460..... | Typical 40mA Max 90mA |
| MTBF:..... | Greater than 100 K hours | CR4470..... | Typical 25mA Max 110mA |
| Altitude:..... | 2000 meter max. | CR4480..... | Typical 55mA Max 120mA |
| Calibration:..... | Average Sensing, RMS Calibrated | CR4410S..... | Typical ---mA Max ----mA |
| Insulation Voltage:..... | 2500 VDC | CR4420S..... | Typical ---mA Max ----mA |
| Power Source:..... | 24 VDC | Torque Specs:..... | 3.0 inch lbs. (0.4Nm) |
| Frequency Range:..... | 50Hz - 400Hz | Weight:..... | 0.5 lbs. |
| Output Load:..... | 4-20 mADC - 0 to 500 Ω | | |
| | 0-5 VDC - 2K Ω or Greater | | |



OUTLINE DRAWING

NOTE: The building installation must have a switch or circuit-breaker that is in close proximity and within easy reach of the operator. The switch or circuit breaker shall be marked as the disconnecting device for the equipment.




*Request CR Magnetics Low & Medium Voltage Current Transformers Catalog.

CONNECTION DIAGRAM

Looking for pricing, stock, or lifecycle information?

Click below to explore more details on WIN SOURCE:

 [View CR4410S-15 on WIN SOURCE](#)

 [CR Magnetics Inc. Information](#)

Optimize Your Supply Chain with WIN SOURCE Solutions

-  Global Sourcing Solution
-  Obsolete Management
-  Cost Control Management
-  Shortage Management
-  Alternative Solution
-  Excess Inventory Management