

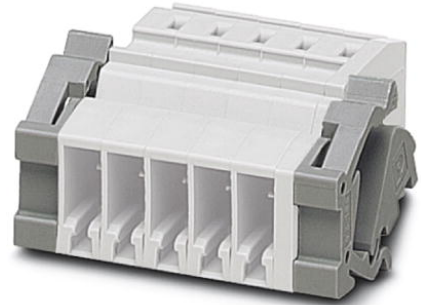


**THE DATASHEET OF
3043815**




SSL 2,5

Order No.: 3043815



<http://eshop.phoenixcontact.de/phoenix/treeViewClick.do?UID=3043815>

Panel feed-through, Width: 5.15 mm, Color: gray

Commercial data	
GTIN (EAN)	 4 017918 936235
sales group	A679
Pack	50 pcs.
Customs tariff	85366990
Catalog page information	Page 273 (CL-2009)

Product notes

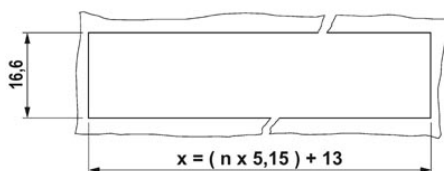
WEEE/RoHS-compliant since:
01/01/2003



<http://www.download.phoenixcontact.com>
Please note that the data given here has been taken from the online catalog. For comprehensive information and data, please refer to the user documentation. The General Terms and Conditions of Use apply to Internet downloads.

Diagrams/Drawings

Dimensioned drawing



n = No. of positions

Address

PHOENIX CONTACT Deutschland GmbH
Flachmarktstr. 8
32825 Blomberg, Germany
Phone +49 5235 3 12000
Fax +49 5235 3 41200
<http://www.phoenixcontact.de>



© 2011 Phoenix Contact
Technical modifications reserved;

Looking for pricing, stock, or lifecycle information?

Click below to explore more details on WIN SOURCE:

 [View 3043815 on WIN SOURCE](#)

 [Phoenix Contact](#) Information

Optimize Your Supply Chain with WIN SOURCE Solutions

-  Global Sourcing Solution
-  Obsolete Management
-  Cost Control Management
-  Shortage Management
-  Alternative Solution
-  Excess Inventory Management