



THE DATASHEET OF
320358



- 1
- 2
- 3
- 4
- 5
- 6
- 7
- 8
- 9
- 10
- 11
- 12
- 13
- 14
- 15
- 16
- 17
- 18

MATERIAL

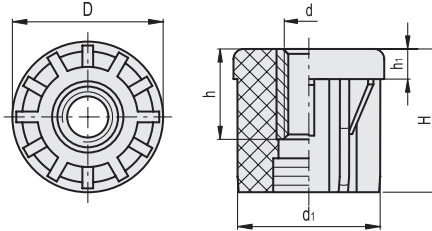
Glass-fibre reinforced polyamide based (PA) technopolymer, black colour, matte finish.

STANDARD EXECUTION

Nickel-plated brass boss with threaded pass-through hole.



Conversion Table			
1 mm = 0.039 inch			
L			
mm	inch	mm	inch
20	0.79	40	1.57
25	0.98	42	1.65
30	1.18	45	1.77
32	1.26	48	1.89
35	1.37	50.5	1.97
38	1.50	60	2.36




METRIC

Code	Description	D	d	h	d ₁	H	h ₁	Tube external diameter	Tube internal diameter	Tube thickness	Max. static load* [N]	
320211	NDX.T-20x2-M8	20	M8	10	16	23	5	20	16	2	4000	23
320221	NDX.T-25x2-M8	25	M8	10	21	26	5.5	25	21	2	4500	24
320222	NDX.T-25x2-M10	25	M10	10	21	26	5.5	25	21	2	4500	24
320231	NDX.T-30x1-M8	30	M8	10	28	31	6	30	28	1	4500	24
320232	NDX.T-30x1-M10	30	M10	10	28	31	6	30	28	1	4500	24
320233	NDX.T-30x1-M12	30	M12	10	28	31	6	30	28	1	4500	24
320234	NDX.T-30x1-M14	30	M14	15	28	31	6	30	28	1	4500	26
320235	NDX.T-30x1-M16	30	M16	15	28	31	6	30	28	1	4500	26
320241	NDX.T-30x1.5-M8	30	M8	10	27	31	6	30	27	1.5	4500	24
320242	NDX.T-30x1.5-M10	30	M10	10	27	31	6	30	27	1.5	4500	24
320243	NDX.T-30x1.5-M12	30	M12	10	27	31	6	30	27	1.5	4500	24
320244	NDX.T-30x1.5-M14	30	M14	15	27	31	6	30	27	1.5	4500	26
320245	NDX.T-30x1.5-M16	30	M16	15	27	31	6	30	27	1.5	4500	26
320251	NDX.T-30x2-M8	30	M8	10	26	31	6	30	26	2	4500	24
320252	NDX.T-30x2-M10	30	M10	10	26	31	6	30	26	2	4500	24
320253	NDX.T-30x2-M12	30	M12	10	26	31	6	30	26	2	4500	24
320254	NDX.T-30x2-M14	30	M14	15	26	31	6	30	26	2	4500	26
320255	NDX.T-30x2-M16	30	M16	15	26	31	6	30	26	2	4500	26
320261	NDX.T-30x2.5-M8	30	M8	10	25	31	6	30	25	2.5	4500	24
320262	NDX.T-30x2.5-M10	30	M10	10	25	31	6	30	25	2.5	4500	24
320263	NDX.T-30x2.5-M12	30	M12	10	25	31	6	30	25	2.5	4500	24
320264	NDX.T-30x2.5-M14	30	M14	15	25	31	6	30	25	2.5	4500	26
320265	NDX.T-30x2.5-M16	30	M16	15	25	31	6	30	25	2.5	4500	26
320266	NDX.T-32x2-M8	32	M8	10	28	31	6	32	28	2	4500	28
320267	NDX.T-32x2-M10	32	M10	10	28	31	6	32	28	2	4500	28
320268	NDX.T-35x2-M10	35	M10	10	31	31	6	35	31	2	4500	30
320269	NDX.T-35x2-M12	35	M12	10	31	31	6	35	31	2	4500	30
320271	NDX.T-38x1.5-M8	38	M8	10	35	38	8	38	35	1.5	5000	32
320272	NDX.T-38x1.5-M10	38	M10	10	35	38	8	38	35	1.5	5000	32
320273	NDX.T-38x1.5-M12	38	M12	10	35	38	8	38	35	1.5	5000	32
320274	NDX.T-38x1.5-M14	38	M14	15	35	38	8	38	35	1.5	5000	34
320275	NDX.T-38x1.5-M16	38	M16	15	35	38	8	38	35	1.5	5000	34
320282	NDX.T-38x2-M10	38	M10	10	34	38	8	38	34	2	5000	32
320283	NDX.T-38x2-M12	38	M12	10	34	38	8	38	34	2	5000	32
320284	NDX.T-38x2-M14	38	M14	15	34	38	8	38	34	2	5000	34
320285	NDX.T-38x2-M16	38	M16	15	34	38	8	38	34	2	5000	34
320292	NDX.T-38x2.5-M10	38	M10	10	33	38	8	38	33	2.5	5000	32
320293	NDX.T-38x2.5-M12	38	M12	10	33	38	8	38	33	2.5	5000	32
320294	NDX.T-38x2.5-M14	38	M14	15	33	38	8	38	33	2.5	5000	34
320295	NDX.T-38x2.5-M16	38	M16	15	33	38	8	38	33	2.5	5000	34
320297	NDX.T-40x3-M10	40	M10	10	34	38	7.5	40	34	3	5000	40
320298	NDX.T-40x3-M12	40	M12	10	34	38	7.5	40	34	3	5000	40
320301	NDX.T-42.4x1.5-M8	42	M8	10	39.4	38	8	42.4	39.4	1.5	5000	44
320302	NDX.T-42.4x1.5-M10	42	M10	10	39.4	38	8	42.4	39.4	1.5	5000	44
320303	NDX.T-42.4x1.5-M12	42	M12	10	39.4	38	8	42.4	39.4	1.5	5000	44
320304	NDX.T-42.4x1.5-M14	42	M14	15	39.4	38	8	42.4	39.4	1.5	5000	46
320305	NDX.T-42.4x1.5-M16	42	M16	15	39.4	38	8	42.4	39.4	1.5	5000	46
320306	NDX.T-42.4x1.5-M20	42	M20	20	39.4	38	8	42.4	39.4	1.5	8000	42

Levelling elements and supports

METRIC

Code	Description	D	d	h	d1	H	h1	Tube external diameter	Tube internal diameter	Tube thickness	Max. static load* [N]	
320312	NDX.T-42.4x2-M10	42	M10	10	38.4	38	8	42.4	38.4	2	5000	44
320313	NDX.T-42.4x2-M12	42	M12	10	38.4	38	8	42.4	38.4	2	5000	44
320314	NDX.T-42.4x2-M14	42	M14	15	38.4	38	8	42.4	38.4	2	5000	46
320315	NDX.T-42.4x2-M16	42	M16	15	38.4	38	8	42.4	38.4	2	5000	46
320316	NDX.T-42.4x2-M20	42	M20	20	38.4	38	8	42.4	38.4	2	8000	42
320322	NDX.T-42.4x2.5-M10	42	M10	10	37.4	38	8	42.4	37.4	2.5	5000	44
320323	NDX.T-42.4x2.5-M12	42	M12	10	37.4	38	8	42.4	37.4	2.5	5000	44
320324	NDX.T-42.4x2.5-M14	42	M14	15	37.4	38	8	42.4	37.4	2.5	5000	46
320325	NDX.T-42.4x2.5-M16	42	M16	15	37.4	38	8	42.4	37.4	2.5	5000	46
320326	NDX.T-42.4x2.5-M20	42	M20	20	37.4	38	8	42.4	37.4	2.5	8000	42
320327	NDX.T-42x3-M10	42	M10	10	36	38	8	42	36	3	5000	44
320328	NDX.T-42x3-M12	42	M12	10	36	38	8	42	36	3	5000	44
320329	NDX.T-45x3-M12	45	M12	10	39	38	8.5	45	39	3	5000	46
320330	NDX.T-45x3-M16	45	M16	10	39	38	8.5	45	39	3	5000	46
320331	NDX.T-48.3x1.5-M8	48	M8	10	45.3	45	10	48.3	45.3	1.5	5500	50
320332	NDX.T-48.3x1.5-M10	48	M10	10	45.3	45	10	48.3	45.3	1.5	5500	50
320333	NDX.T-48.3x1.5-M12	48	M12	10	45.3	45	10	48.3	45.3	1.5	5500	50
320334	NDX.T-48.3x1.5-M14	48	M14	15	45.3	45	10	48.3	45.3	1.5	5500	52
320335	NDX.T-48.3x1.5-M16	48	M16	15	45.3	45	10	48.3	45.3	1.5	5500	52
320336	NDX.T-48.3x1.5-M20	48	M20	20	45.3	45	10	48.3	45.3	1.5	8500	48
320343	NDX.T-48.3x2-M12	48	M12	10	44.3	38	10	48.3	44.3	2	5500	50
320344	NDX.T-48.3x2-M14	48	M14	15	44.3	45	10	48.3	44.3	2	5500	52
320345	NDX.T-48.3x2-M16	48	M16	15	44.3	45	10	48.3	44.3	2	5500	52
320346	NDX.T-48.3x2-M20	48	M20	20	44.3	45	10	48.3	44.3	2	8500	48
320353	NDX.T-48.3x2.5-M12	48	M12	10	43.3	45	10	48.3	43.3	2.5	5500	50
320354	NDX.T-48.3x2.5-M14	48	M14	15	43.3	45	10	48.3	43.3	2.5	5500	52
320355	NDX.T-48.3x2.5-M16	48	M16	15	43.3	45	10	48.3	43.3	2.5	5500	52
320356	NDX.T-48.3x2.5-M20	48	M20	20	43.3	45	10	48.3	43.3	2.5	8500	48
320358	NDX.T-48x3-M12	48	M12	10	42	45	10	48	42	3	5500	50
320359	NDX.T-48x3-M16	48	M16	15	42	45	10	48	42	3	5500	52
320363	NDX.T-50.9x1.5-M12	50.5	M12	10	47.9	45	10	50.9	47.9	1.5	5500	64
320364	NDX.T-50.9x1.5-M14	50.5	M14	15	47.9	45	10	50.9	47.9	1.5	5500	64
320365	NDX.T-50.9x1.5-M16	50.5	M16	15	47.9	45	10	50.9	47.9	1.5	5500	63
320366	NDX.T-50.9x1.5-M20	50.5	M20	20	47.9	45	10	50.9	47.9	1.5	8500	63
320373	NDX.T-50.9x2-M12	50.5	M12	10	46.9	45	10	50.9	46.9	2	5500	63
320374	NDX.T-50.9x2-M14	50.5	M14	15	46.9	45	10	50.9	46.9	2	5500	63
320375	NDX.T-50.9x2-M16	50.5	M16	15	46.9	45	10	50.9	46.9	2	5500	63
320376	NDX.T-50.9x2-M20	50.5	M20	20	46.9	45	10	50.9	46.9	2	8500	62
320383	NDX.T-50.9x2.5-M12	50.5	M12	10	45.9	45	10	50.9	45.9	2.5	5500	64
320384	NDX.T-50.9x2.5-M14	50.5	M14	15	45.9	45	10	50.9	45.9	2.5	5500	64
320385	NDX.T-50.9x2.5-M16	50.5	M16	15	45.9	45	10	50.9	45.9	2.5	5500	63
320386	NDX.T-50.9x2.5-M20	50.5	M20	20	45.9	45	10	50.9	45.9	2.5	8500	63
320388	NDX.T-50x3-M12	50.5	M12	10	44.5	45	10	50.5	44.5	3	5500	64
320389	NDX.T-50x3-M16	50.5	M16	15	44.5	45	10	50.5	44.5	3	5500	63
320391	NDX.T-60.3x1.5-M8	60	M8	10	57.3	52	12	60.3	57.3	1.5	5500	92
320392	NDX.T-60.3x1.5-M10	60	M10	10	57.3	52	12	60.3	57.3	1.5	5500	92
320393	NDX.T-60.3x1.5-M12	60	M12	10	57.3	52	12	60.3	57.3	1.5	5500	92
320394	NDX.T-60.3x1.5-M14	60	M14	15	57.3	52	12	60.3	57.3	1.5	5500	94
320395	NDX.T-60.3x1.5-M16	60	M16	15	57.3	52	12	60.3	57.3	1.5	5500	94
320396	NDX.T-60.3x1.5-M20	60	M20	20	57.3	52	12	60.3	57.3	1.5	8500	92
320397	NDX.T-60.3x1.5-M24	60	M24	20	57.3	52	12	60.3	57.3	1.5	8500	92
320401	NDX.T-60.3x2-M8	60	M8	10	56.3	52	12	60.3	56.3	2	5500	92
320402	NDX.T-60.3x2-M10	60	M10	10	56.3	52	12	60.3	56.3	2	5500	92
320403	NDX.T-60.3x2-M12	60	M12	10	56.3	52	12	60.3	56.3	2	5500	92
320404	NDX.T-60.3x2-M14	60	M14	15	56.3	52	12	60.3	56.3	2	5500	94
320405	NDX.T-60.3x2-M16	60	M16	15	56.3	52	12	60.3	56.3	2	5500	94
320406	NDX.T-60.3x2-M20	60	M20	20	56.3	52	12	60.3	56.3	2	8500	94
320407	NDX.T-60.3x2-M24	60	M24	20	56.3	52	12	60.3	56.3	2	8500	92
320411	NDX.T-60.3x2.5-M8	60	M8	10	55.3	52	12	60.3	55.3	2.5	5500	92
320412	NDX.T-60.3x2.5-M10	60	M10	10	55.3	52	12	60.3	55.3	2.5	5500	92
320413	NDX.T-60.3x2.5-M12	60	M12	10	55.3	52	12	60.3	55.3	2.5	5500	92
320414	NDX.T-60.3x2.5-M14	60	M14	15	55.3	52	12	60.3	55.3	2.5	5500	94
320415	NDX.T-60.3x2.5-M16	60	M16	15	55.3	52	12	60.3	55.3	2.5	5500	94
320416	NDX.T-60.3x2.5-M20	60	M20	20	55.3	52	12	60.3	55.3	2.5	8500	92
320417	NDX.T-60.3x2.5-M24	60	M24	20	55.3	52	12	60.3	55.3	2.5	8500	92

* The max static load is the value above which the load applied to the element may cause some plastic material breakage, in particular conditions of use. Obviously, a factor that takes into consideration the importance and the safety level of the specific application must be applied to this value.









Looking for pricing, stock, or lifecycle information?

Click below to explore more details on WIN SOURCE:

-  [View 320358 on WIN SOURCE](#)
-  [Elesa USA Corporation Information](#)

Optimize Your Supply Chain with WIN SOURCE Solutions

-  Global Sourcing Solution
-  Obsolete Management
-  Cost Control Management
-  Shortage Management
-  Alternative Solution
-  Excess Inventory Management