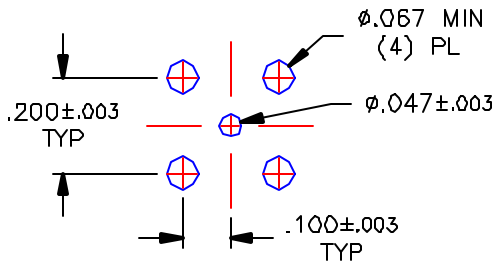




THE DATASHEET OF
3509-1511-000

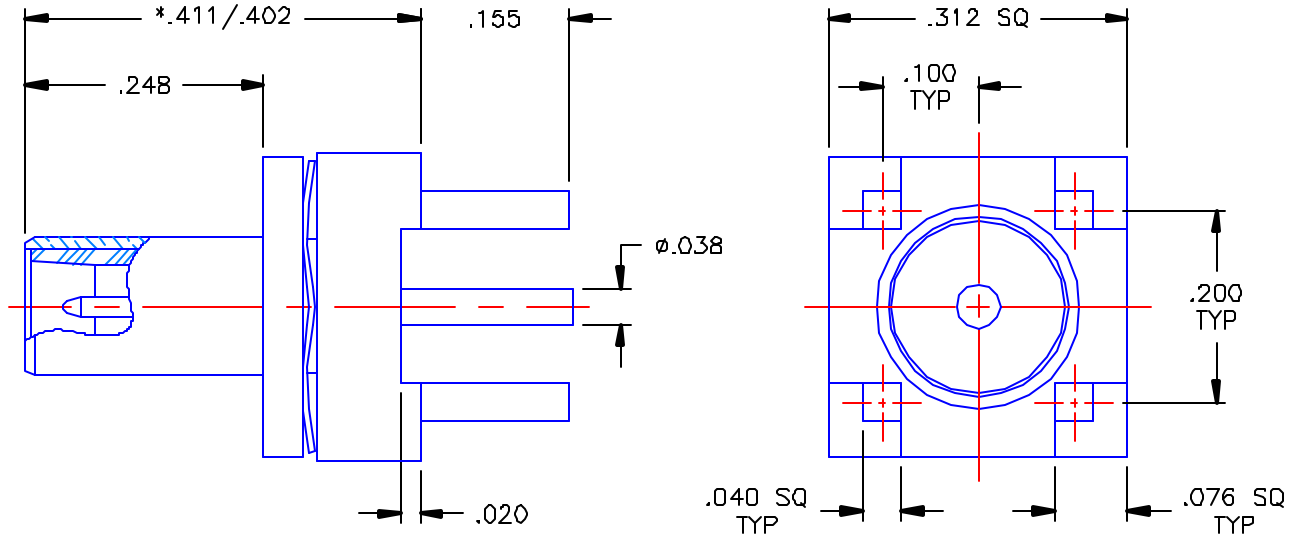


REVISIONS			
REV	DESCRIPTION	DATE	APPROVED
D	ECO #5320	03/22/04	A.D.M.



MOUNTING HOLE DIMENSIONS NTS

PROPRIETARY INFORMATION
NOT TO BE RELEASED
WITHOUT WRITTEN PERMISSION
FROM AN AUTHORIZED
REPRESENTATIVE OF
APPLIED ENGINEERING PRODUCTS



NOTES:


MATERIALS:

1. BODIES & CONTACTS = BRASS PER ASTM B16, ALLOY C36000, TEMPER H02.
2. INSULATORS = VIRGIN WHITE TEFLON PER ASTM D1710, GRADE 1, TYPE I, CLASS "B".
3. SPRING & CURVED SPRING WASHER = STAINLESS STEEL.

FINISHES:

1. CONTACTS = GOLD PLATE PER MIL-G-45204, TYPE II, CLASS 1, GRADE C, OVER .00010 TO .00020 STRESS FREE SULFAMATE NICKEL PER QQ-N-290.
2. SPRING = GOLD PLATE PER MIL-G-45204, TYPE II, CLASS 0, GRADE C, NO UNDERPLATE.
3. ALL OTHER METAL PARTS = GOLD PLATE PER MIL-G-45204, TYPE II, CLASS 0, GRADE C, OVER .000050 TO .00010 STRESS FREE NICKEL PER QQ-N-290

*CONNECTOR IS SPRING LOADED AND CAN TRAVEL AXIALLY .009 INCHES, AND ±.020 INCHES RADIAL FLOAT.

UNLESS OTHERWISE SPECIFIED DIMENSIONS ARE IN INCHES TOLERANCES ON	DWN. A.D.M.	DATE 03/22/04	 APPLIED ENGINEERING PRODUCTS 104 John W. Murphy Dr. New Haven, CT 06513
	CHKD: D.N.	DATE 03/22/04	
DECIMAL	ANGLE	APVD: D.J.C.	DATE 03/22/04
REFERENCE: PATENT #5,769,652		MATERIALS & FINISHES: SEE NOTES	
ORIGINATOR: M S DATE: 12/29/97		SIZE A	FSCM NO. 19505
		DWG NO. 3509-1511-000	
		SCALE 5:1	REV D
		SHEET 1 OF 1	

3509-1511-000

Looking for pricing, stock, or lifecycle information?

Click below to explore more details on WIN SOURCE:

 [View 3509-1511-000 on WIN SOURCE](#)

 [Radiall USA, Inc. Information](#)

Optimize Your Supply Chain with WIN SOURCE Solutions

-  Global Sourcing Solution
-  Obsolete Management
-  Cost Control Management
-  Shortage Management
-  Alternative Solution
-  Excess Inventory Management