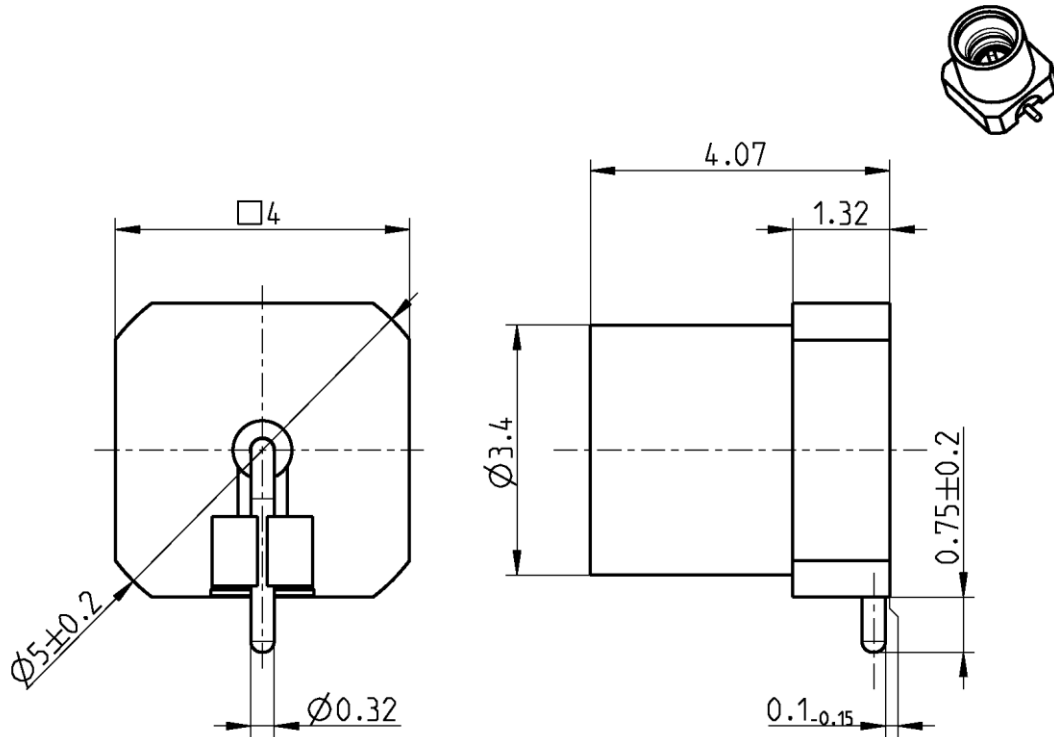




**THE DATASHEET OF
18S102-40ML5**





All dimensions are in mm; tolerances according to ISO 2768 m-H

Interface

According to

MIL-STD-348

Mateable with GPPO™ (Gilbert Engineering Co., Inc.)
and SSMP™ (Connectors Devices, Inc.)

Documents

PCB layout
Tape & reel packaging

B 209
VG45.1M500

Material and plating

Connector parts

Center contact
Outer contact
Dielectric

Material

CuBe
Brass
PEEK

Plating

AuroDur, gold plated
AuroDur, gold plated

Electrical data

Impedance	50 Ω
Frequency	DC to 65 GHz
Return loss	≥ 19 dB, DC to 26.5 GHz ≥ 13 dB, 26.5 to 40 GHz ≥ 9 dB, 40 to 65 GHz
Insertion loss	≤ 0.05 x √f(GHz) dB, DC to 26.5 GHz
Insulation resistance	≥ 5 GΩ
Center contact resistance	≤ 6.0 mΩ
Outer contact resistance	≤ 2.0 mΩ
Working voltage (at sea level)	325 V rms
(at 70000 feet)	125 V rms

- VSWR in application depends decisive on PCB layout -

Mechanical data

Mating cycles	≥ 100
Center contact captivation	≥ 5 N
Engagement force	
- full detent	19 N typical
Disengagement force	
- full detent	29 N typical

Environmental data

Temperature range	-55°C to +155°C
Thermal shock	MIL-STD-202, Method 107, Condition B
Vibration	MIL-STD-202, Method 204, Condition A
Shock	MIL-STD-202, Method 213, Condition A
Moisture resistance	MIL-STD-202, Method 106
Climatic Category	IEC 60068 55/155/21
Max. soldering temperature	IEC 61760-1, +260°C for 10 sec.
RoHS	compliant

Tooling

N/A

Suitable cables

N/A

Weight

Weight	0.3 g/pce
--------	-----------

While the information has been carefully compiled to the best of our knowledge, nothing is intended as representation or warranty on our part and no statement herein shall be construed as recommendation to infringe existing patents. In the effort to improve our products, we reserve the right to make changes judged to be necessary.

For the installation of the electrotechnical equipment, particular electrotechnical expertise is required.



Draft	Date	Approved	Date	Rev.	Engineering change number	Name	Date
Inge Mühlauer	14.12.04	Chr. Janßen	21.10.20	L00	20-1927	S. Huber-Siegl	21.10.20

Looking for pricing, stock, or lifecycle information?

Click below to explore more details on WIN SOURCE:

- [View 18S102-40ML5 on WIN SOURCE](#)
- [Rosenberger Information](#)

Optimize Your Supply Chain with WIN SOURCE Solutions

- ✓ Global Sourcing Solution
- ✓ Obsolete Management
- ✓ Cost Control Management
- ✓ Shortage Management
- ✓ Alternative Solution
- ✓ Excess Inventory Management