



# THE DATASHEET OF

# 180-062-272L030

[win-source.net](http://win-source.net)



0086-755-83957316

SPECIFICATIONS:

**ELECTRICAL:**

INSULATION RESISTANCE: 1,000 MOhms MIN.  
 OPERATING TEMPERATURE: -50°C TO +100°C  
 VOLTAGE: 500 VAC FOR 1 MINUTE

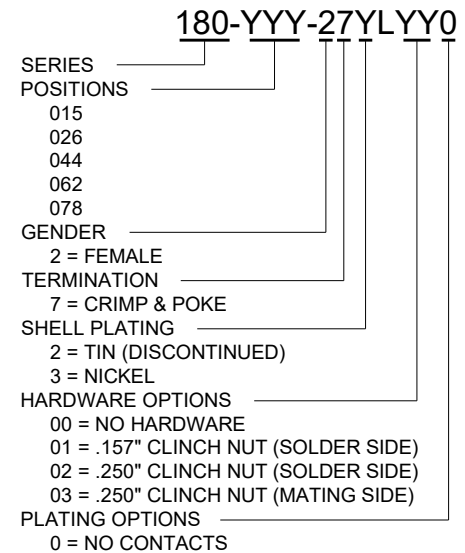
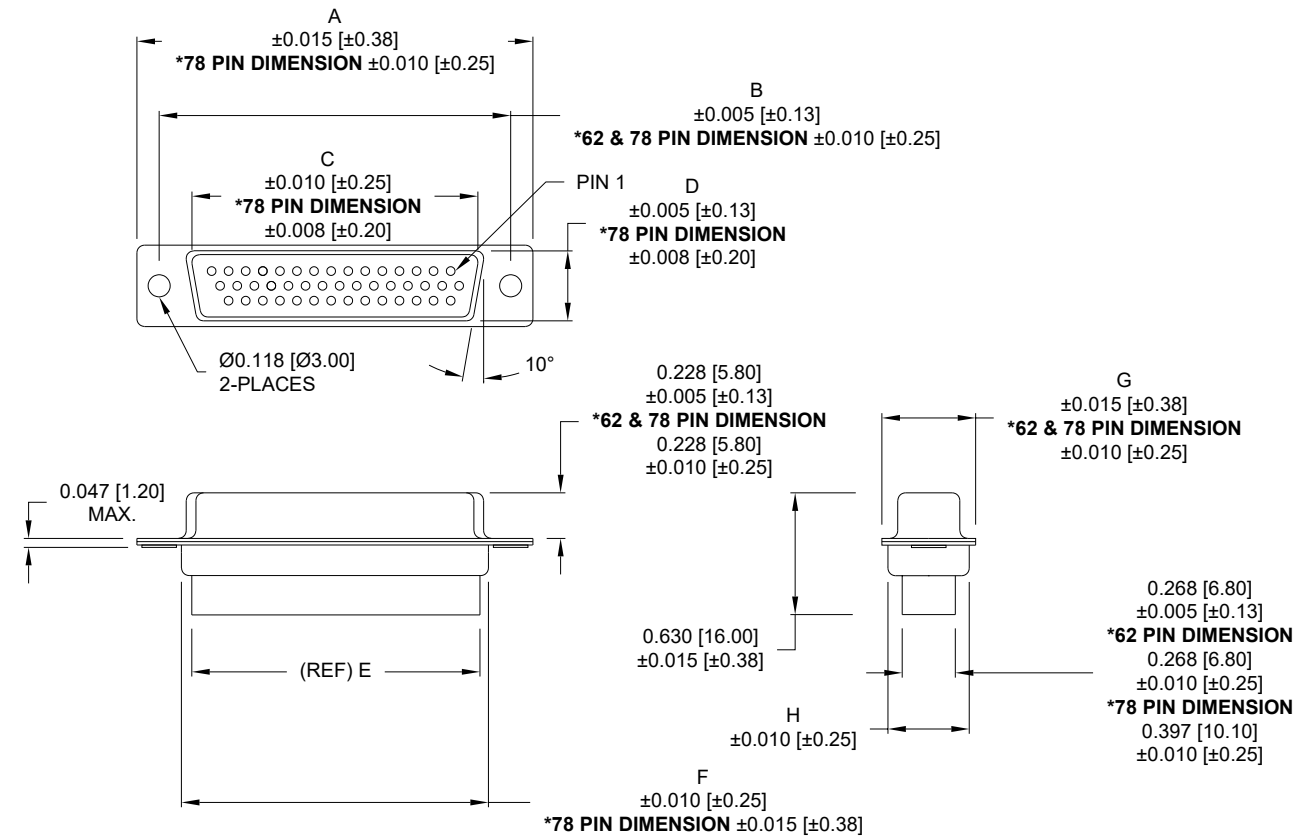
**MATERIALS:**

INSULATOR: PBT +30% GF, UL94 V-0  
 PROCESS TEMP: 230°C  
 SHELL: NICKEL PLATED STEEL

**COMPATIBLE WITH NORCOMP CONTACT PART NUMBERS BELOW:**

180-002-170L001 180-102-170L001

**\*\*NOTE: CONTACTS MUST BE PURCHASED SEPARATELY\*\***



		DIMENSIONS							
No. OF PINS	UNITS	A	B	C	D	E	F	G	H
15	inch	1.213	0.984	0.643	0.311	0.610	0.759	0.494	0.421
	mm	30.81	24.99	16.33	7.90	15.50	19.28	12.55	10.70
26	inch	1.541	1.312	0.970	0.311	0.964	1.089	0.494	0.421
	mm	39.14	33.32	24.66	7.90	24.50	27.65	12.55	10.70
44	inch	2.088	1.852	1.511	0.311	1.494	1.618	0.494	0.421
	mm	53.04	47.04	38.38	7.90	37.95	41.10	12.55	10.70
62	inch	2.736	2.500	2.157	0.311	2.142	2.262	0.494	0.421
	mm	69.50	63.50	54.80	7.90	54.40	57.46	12.55	10.70
4 ROWS 78	inch	2.644	2.406	2.061	0.422	2.035	2.169	0.605	0.527
	mm	67.16	61.11	52.34	10.72	51.70	55.10	15.37	13.40

RoHS COMPLIANT

UNITS = inch [mm]

DO NOT SCALE FROM DRAWING

**NC** THESE DRAWINGS AND SPECIFICATIONS ARE THE PROPERTY OF NorComp AND SHALL NOT BE REPRODUCED, COPIED OR USED AS THE BASIS FOR THE MANUFACTURE OR SALE OF APPARATUS WITHOUT WRITTEN PERMISSION.

DRAWN: P. JENKINS  
 DATE: 07/19/2005

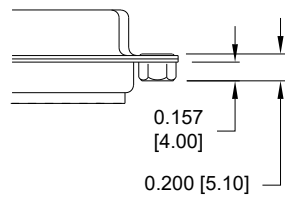
**NorComp**

SCALE: NTS SHEET 1 OF 2 REV 22  
 DWG NO. 180-YYY-27YLYY0

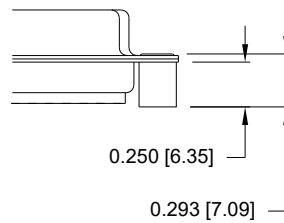
**TOLERANCE:**  
ALL DIMENSIONS ARE ±0.010

ALL CLINCH-NUTS ARE 4-40 INTERNAL THREADS

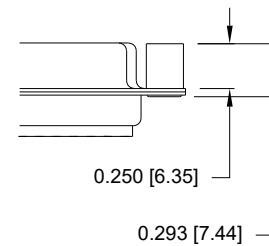
01 ..... 0.157" (SOLDER SIDE)



02 ..... 0.250" (SOLDER SIDE)



03 ..... 0.250" (MATING SIDE)



RoHS COMPLIANT

UNITS = inch [mm]

DO NOT SCALE FROM DRAWING



THESE DRAWINGS AND SPECIFICATIONS ARE THE PROPERTY OF NorComp AND SHALL NOT BE REPRODUCED, COPIED OR USED AS THE BASIS FOR THE MANUFACTURE OR SALE OF APPARATUS WITHOUT WRITTEN PERMISSION.

DRAWN:  
**P. JENKINS**

DATE:  
07/19/2005

**NorComp**

SCALE:  
NTS

SHEET OF  
2 2

REV  
22

DWG NO.

180-YYY-27YLYY0

## Looking for pricing, stock, or lifecycle information?

Click below to explore more details on WIN SOURCE:

 [View 180-062-272L030 on WIN SOURCE](#)

 [NorComp Inc. Information](#)

## Optimize Your Supply Chain with WIN SOURCE Solutions

-  Global Sourcing Solution
-  Obsolete Management
-  Cost Control Management
-  Shortage Management
-  Alternative Solution
-  Excess Inventory Management