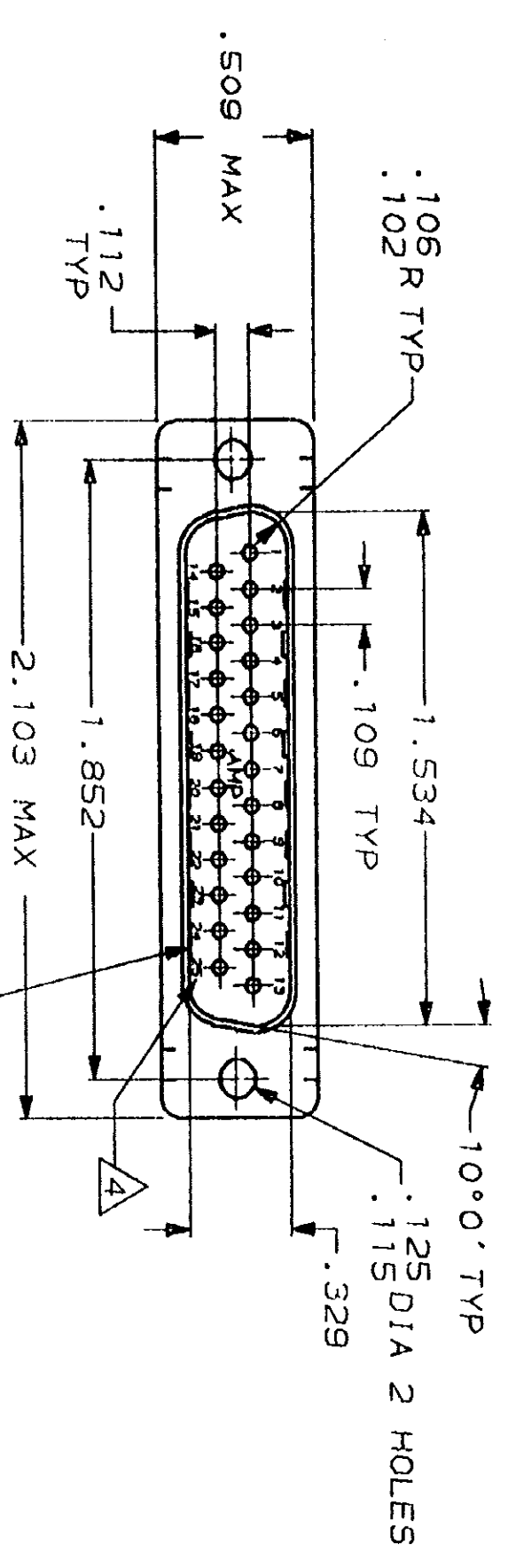




THE DATASHEET OF
747554-1

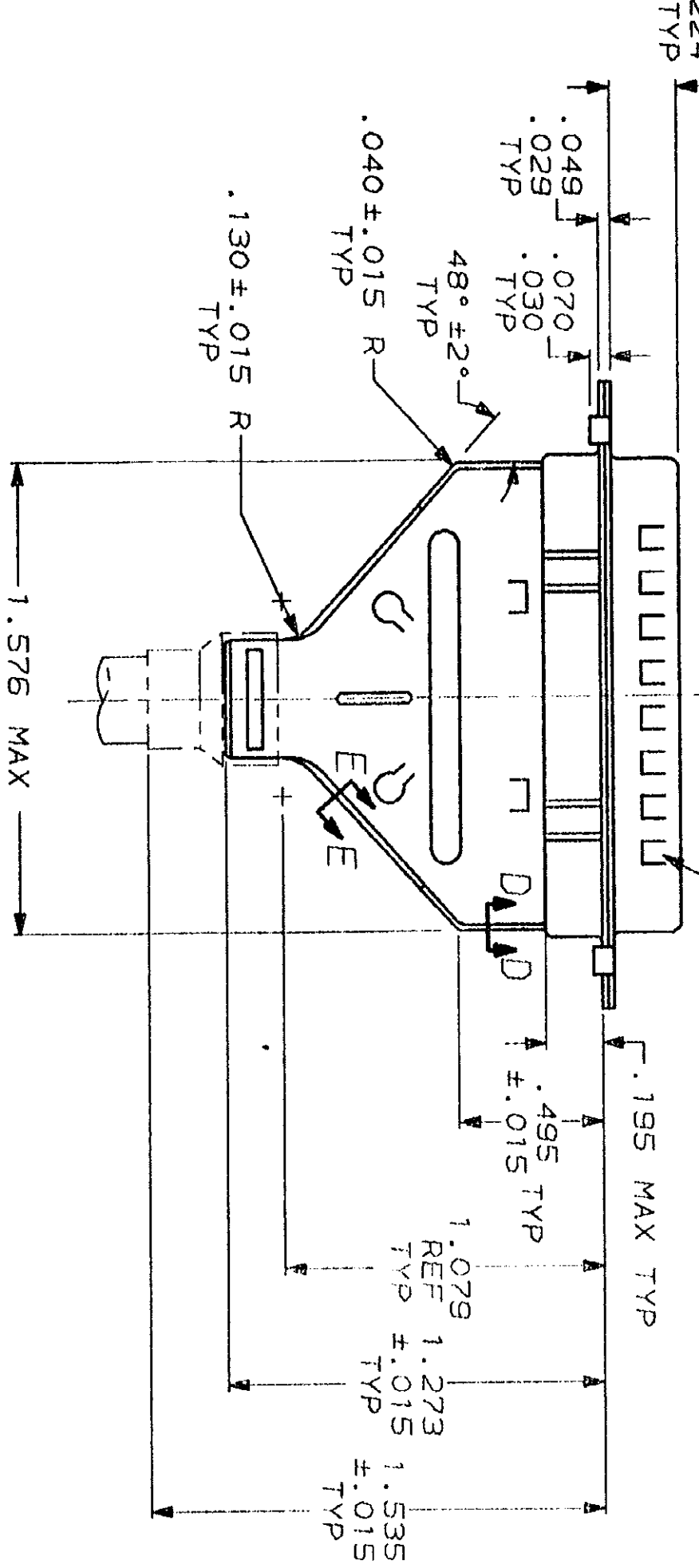


REV	DATE	APP'D	DESCRIPTION
1	5-30-90		
2	09/24/90		REDRAWN
3	06/19/92	TS	REV PER ECN BD4294
4	07/09/92	SB	REV PER ECN BD6177
5			ADDED -3 PER NPR 4258



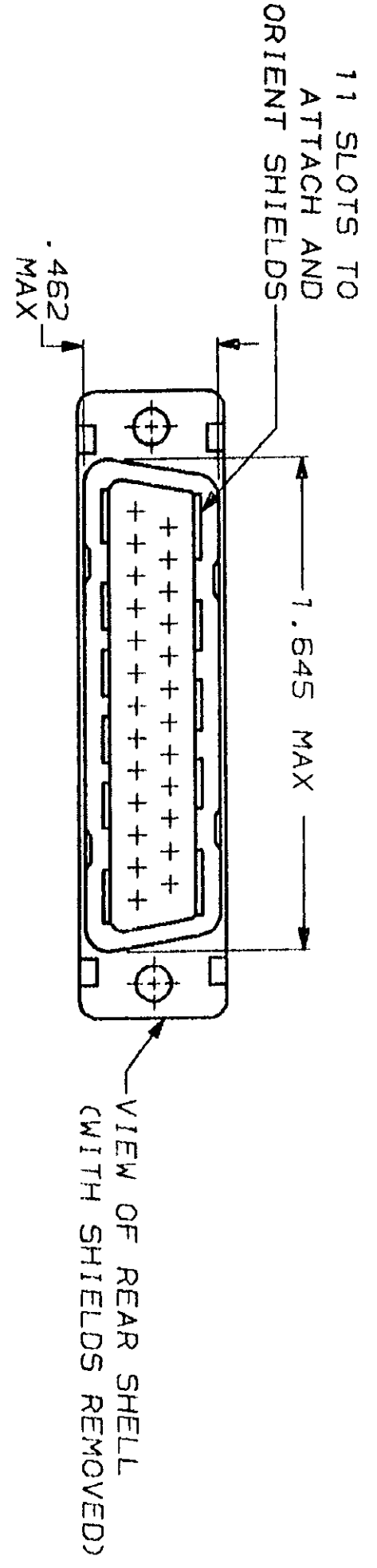
PLUG CONNECTOR 1
 INSERTS: BLACK GLASS-FILLED NYLON, 94V-0 RATED.
 SHELLS: STEEL PER ASTM A109, BRIGHT TIN PLATED PER MIL-T-10727.

SECTION D-D
 SCALE 4:1



FERRULE (MUST BE PURCHASED SEPARATELY)

SECTION E-E
 SCALE 4:1



11 SLOTS TO ATTACH AND ORIENT SHIELDS

1. PLUG ACCEPTS SIZE 20 PIN CONTACTS (CONTACTS MUST BE ORDERED SEPARATELY).
2. ALL PARTS SHIPPED UNASSEMBLED, EACH PART INDIVIDUALLY BULK PACKED.
3. SHIELDS: MATERIAL-.020 THICK STEEL, TIN PLATED PER MIL-T-10727.
4. RAISED CAVITY IDENTIFICATION AND AMP TRADEMARK.
5. SEE RESTRICTED CUSTOMER DRAWING 747554-3.

OBsolete	NO	747554-2	747554-1	PART NUMBER
GROUNDING	YES			
INDENTS				

DO NOT SCALE PRINT. UNLESS SPECIFIED DIMENSIONS IN INCHES TOLERANCES ON:		DR 5-30-90	J. GALLUCCI B6	NAME	AMP AMP INCORPORATED
1	PLG DEC #	CHK 8-31-90	J. McCLINTON	FINISH	AMP INCORPORATED
2	PLG DEC #	APPD 9-4-90	BOB TAYLOR	SEE CALL OUT & NOTE 3	Harrisburg, Pa. 17105
3	PLG DEC #	APPD 9-4-90	J. ASSINI	SEE CALL OUT & NOTE 3	
MATERIAL		PRODUCT SPEC		APPLICATION SPEC	
ANGLES ± 0°30'		WEIGHT		SCALE	2:1
KIT, PLUG, SHIELDING HARDWARE, SIZE 3, 25 POSN, HDP-20, AMPLIMITE™		SIZE	FSCM NO	DRAWING NO	747554
		SCALE	00779	SHEET	1 OF 1

Looking for pricing, stock, or lifecycle information?

Click below to explore more details on WIN SOURCE:

[View 747554-1 on WIN SOURCE](#)

[TE Connectivity Information](#)

Optimize Your Supply Chain with WIN SOURCE Solutions

- ✓ Global Sourcing Solution
- ✓ Obsolete Management
- ✓ Cost Control Management
- ✓ Shortage Management
- ✓ Alternative Solution
- ✓ Excess Inventory Management