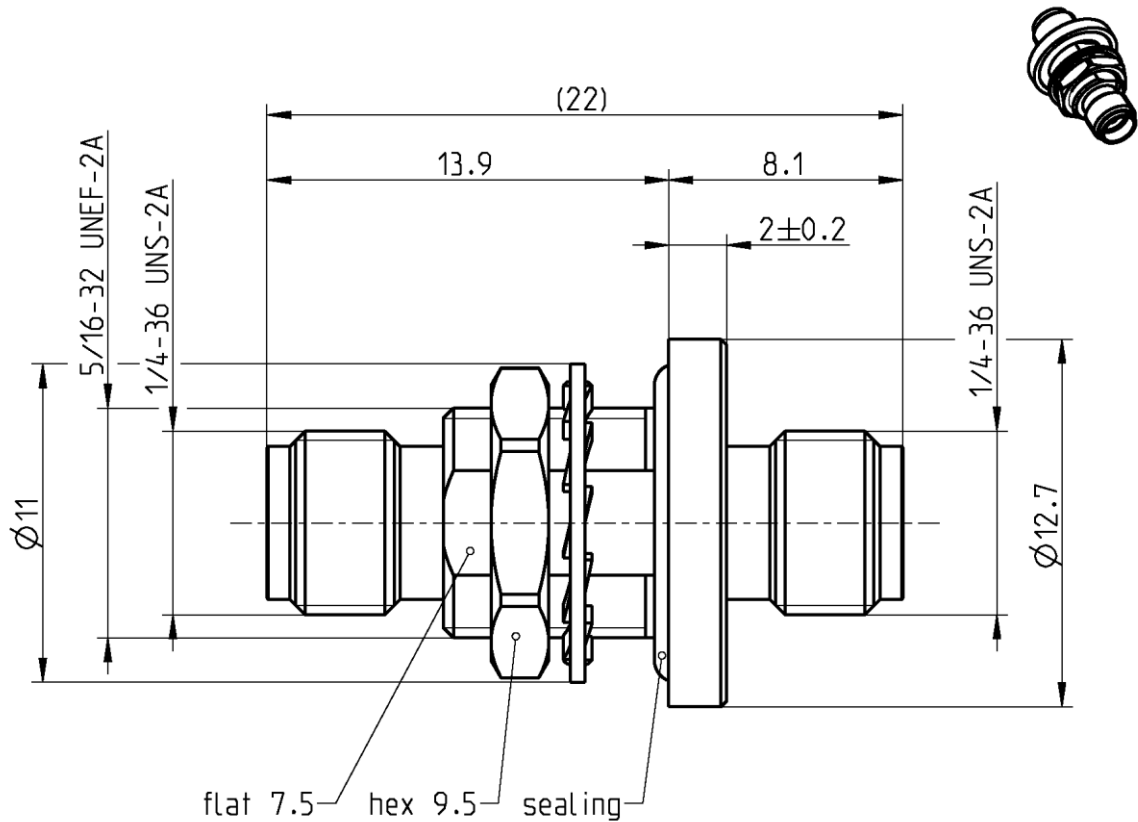




THE DATASHEET OF 32K101-KH0L5





All dimensions are in mm; tolerances according to ISO 2768 m-H

Interface

According to IEC 60169-15, EN 122110, MIL-STD-348A, Fig. 310

Documents

Panel piercing B 58

Material and plating

Connector parts

Connector parts	Material
Center contact	CuBe
Outer contact	CuBe or equiv.
Dielectric	PTFE
Gasket	Silicone
Glass seal	Glass
Internal tooth lock washer	Stainless steel

Plating

AuroDur®, gold plated
AuroDur®, gold plated




Looking for pricing, stock, or lifecycle information?

Click below to explore more details on WIN SOURCE:

 [View 32K101-KH0L5 on WIN SOURCE](#)

 [Rosenberger Information](#)

Optimize Your Supply Chain with WIN SOURCE Solutions

-  Global Sourcing Solution
-  Obsolete Management
-  Cost Control Management
-  Shortage Management
-  Alternative Solution
-  Excess Inventory Management