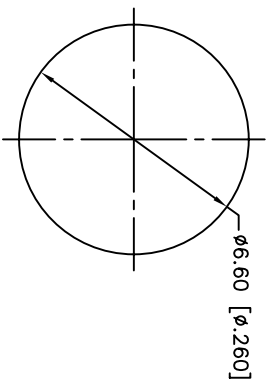
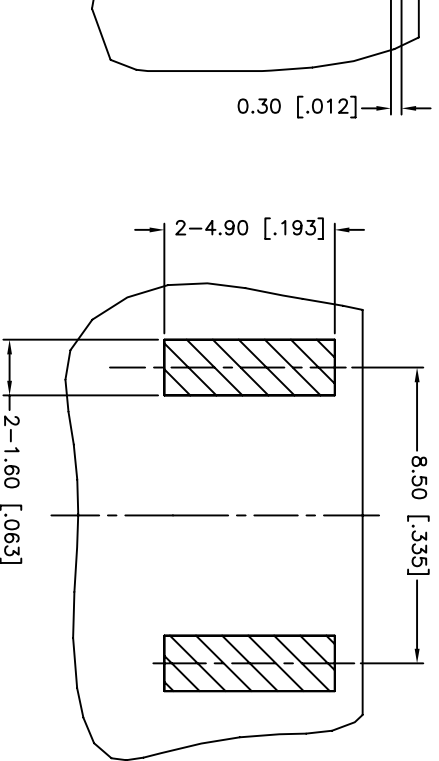


REV.	DATE	ECR NO.	DESCRIPTION
NC	10/26/10	XXXXXX	INITIAL RELEASE

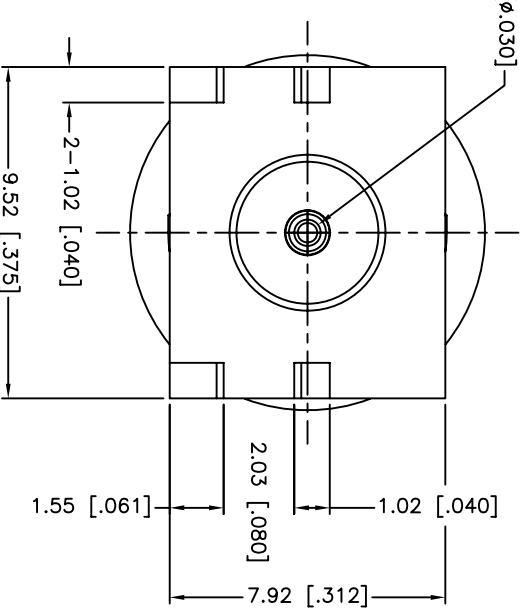
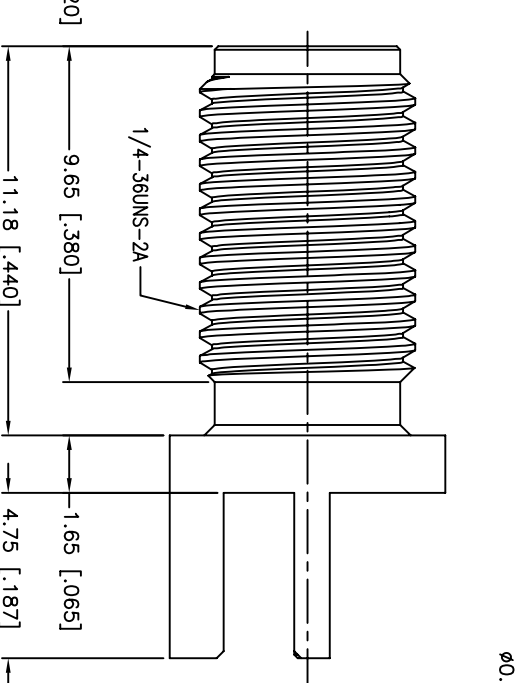
25 [.167]



RECOMMENDED
MOUNTING HOLE

RECOMMENDED PCB LAYOUT

BOTTOM VIEW



1. MAX. PANEL THICKNESS=3.18mm

UNLESS OTHERWISE SPECIFIED DIMENSIONS ARE IN MILLIMETERS DIMENSIONS IN INCHES ARE IN PARENTHESES FOR CUSTOMER REFERENCE ONLY.

UNLESS OTHERWISE SPECIFIED TOLERANCES FOR MILLIMETERS ARE:

- 0.5 - 8mm ± 0.20mm
- 8 - 30mm ± 0.40mm
- 30 - 120mm ± 0.50mm

UNLESS OTHERWISE SPECIFIED TOLERANCES FOR INCHES ARE:

- 0.20 - .315 = ± 0.007"
- .315 - 1.180 = ± 0.015"
- 1.180 - 4.724 = ± 0.020"

QTY	DO NOT SCALE DRAWING
1	

APPROVALS	DATE
DRAWN M.ZHANG	10/26/10
CHECKED	
ISSUED	
SHEET 1 OF 1	

Amphenol Connex

PART DESCRIPTION
**SMA END LAUNCH RECEPT. JACK
(.074" BOARD THICKNESS)**



PART NO. 132416

DWG. NO. 132416.DWG






REV. NC SIZE A SCALE NA

Looking for pricing, stock, or lifecycle information?

Click below to explore more details on WIN SOURCE:

-  [View 132416 on WIN SOURCE](#)
-  [Amphenol Information](#)

Optimize Your Supply Chain with WIN SOURCE Solutions

-  Global Sourcing Solution
-  Obsolete Management
-  Cost Control Management
-  Shortage Management
-  Alternative Solution
-  Excess Inventory Management