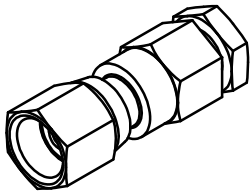


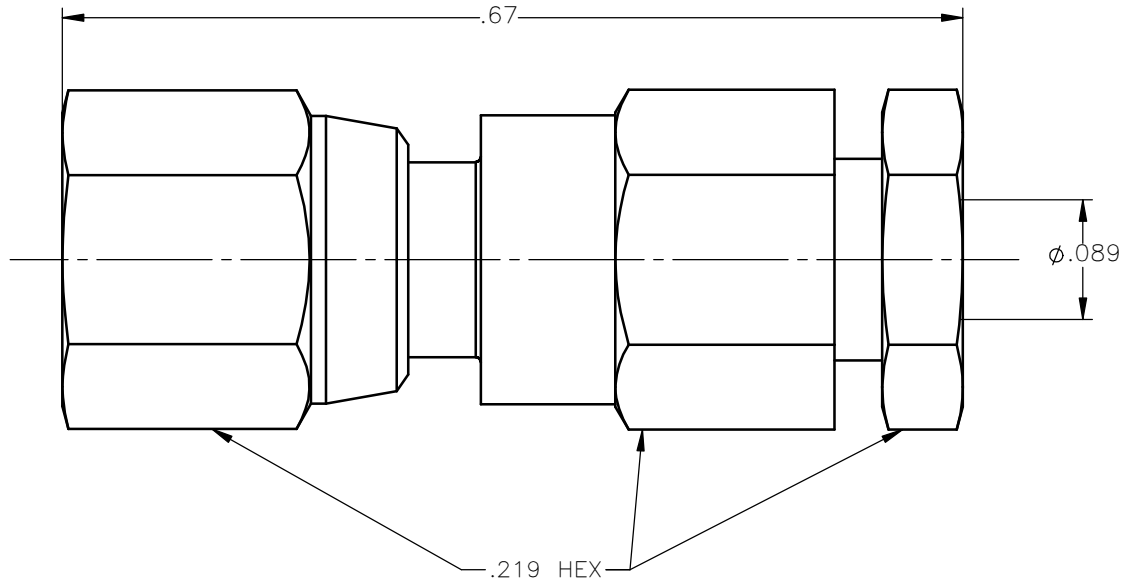


**THE DATASHEET OF**  
**1002-1551-002**





REVISIONS			
REV.	DESCRIPTION	DATE	APPROVED
A	INITIAL RELEASE	10/31/12	J.S.





NOTES:

MATERIALS:

- CONTACT = BERYLLIUM COPPER PER ASTM B196, ALLOY C17300, TEMPER TD04.
- INSULATOR = VIRGIN WHITE TEFLON PER ASTM D1710, GRADE 1, TYPE I, CLASS "B".
- ALL OTHER METAL PARTS = BRASS PER ASTM B16, ALLOY C36000, TEMPER H02.

FINISHES:


- CONTACT = GOLD PLATE PER MIL-G-45204, TYPE II, CLASS 1, GRADE C, OVER .00010 TO .00020 STRESS FREE SULFAMATE NICKEL PER QQ-N-290.
- ALL OTHER METAL PARTS = GOLD PLATE PER MIL-G-45204, TYPE II, CLASS 0, GRADE C, OVER .00010 TO .00020 COPPER STRIKE PER MIL-C-14550.

UNLESS OTHERWISE SPECIFIED DIMENSIONS ARE IN INCHES TOLERANCES ON	DWN:	DATE	 <b>Property of Radiall</b> This document cannot be reproduced or communicated to a third party without prior written permission of RADIALL.	
	J.S.	10/31/12		
DECIMAL	ANGLE	CHKD:	DATE	<b>SMC STRAIGHT FEMALE PLUG CLAMP TYPE FOR RG-178 &amp; SIMILAR CABLES</b>
		D.N.	10/31/12	
		APVD:	DATE	
REFERENCE:	MATERIALS & FINISHES:	J.M.	10/31/12	SIZE A FSCM NO. 19505 DWG NO. 1002-1551-002 REV A SCALE 7:1 THIRD ANGLE PROJECTION SHEET 1 OF 1
ORIGINATED: J.S. DATE: 10/31/12	SEE NOTES			

1002-1551-002

## Looking for pricing, stock, or lifecycle information?

Click below to explore more details on WIN SOURCE:

 [View 1002-1551-002 on WIN SOURCE](#)

 [Radiall USA, Inc. Information](#)

## Optimize Your Supply Chain with WIN SOURCE Solutions

-  Global Sourcing Solution
-  Obsolete Management
-  Cost Control Management
-  Shortage Management
-  Alternative Solution
-  Excess Inventory Management