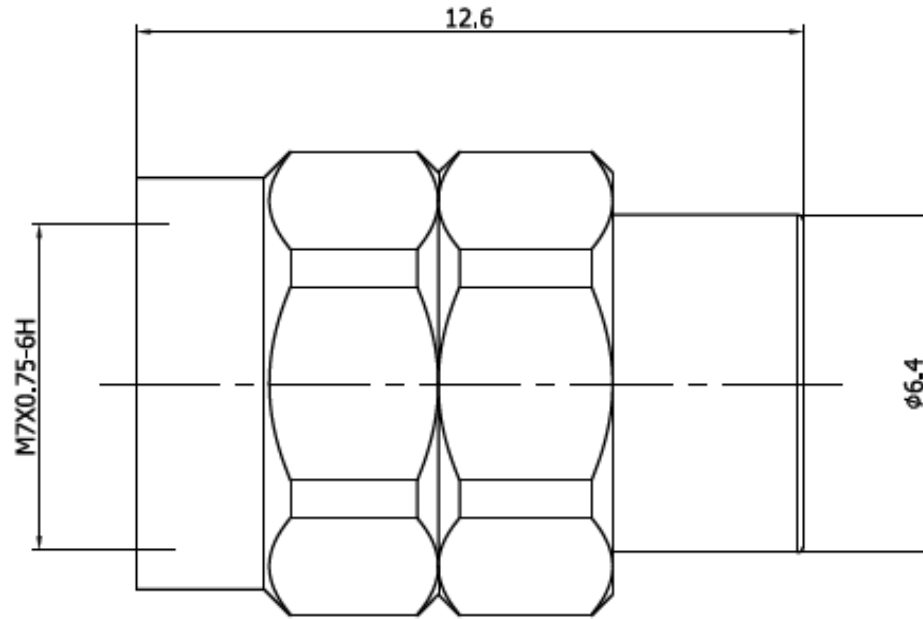




**THE DATASHEET OF  
1.85P50TD65G-0.5W**



# Reference Drawing



## MATERIAL:

BODY: STAINLESS STEEL  
 CONTACT: BERYLLIUM COPPER  
 INSULATOR: PEI

## PERFORMANCE:

IMPEDANCE: 50 OHMS  
 FREQUENCY: DC~TO 65 GHz  
 POWER HANDLING: 0.5W

|                                   |   |
|-----------------------------------|---|
| R o H S Compliant $Cd \leq 75ppm$ |   |
| REMARKS                           | BRASS: Cd $\leq 75ppm$ PHOSPHOR<br>BRONZE: Pb <4wt% |

|                    |                |                   |
|--------------------|----------------|-------------------|
| SCALE<br>NONE      |                | PART NUMBER       |
| UNIT<br>mm         |                | 1.85P50TD65G-0.5W |
| DATE<br>2025/02/13 | PROJECTION<br> | TO-CONNE CO.,LTD  |

## Looking for pricing, stock, or lifecycle information?

Click below to explore more details on WIN SOURCE:

 [View 1.85P50TD65G-0.5W on WIN SOURCE](#)

 [TYCLON Information](#)

## Optimize Your Supply Chain with WIN SOURCE Solutions

-  Global Sourcing Solution
-  Obsolete Management
-  Cost Control Management
-  Shortage Management
-  Alternative Solution
-  Excess Inventory Management