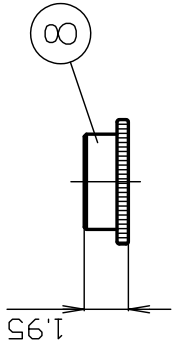
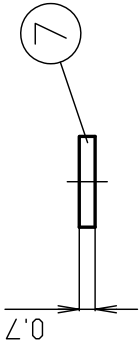
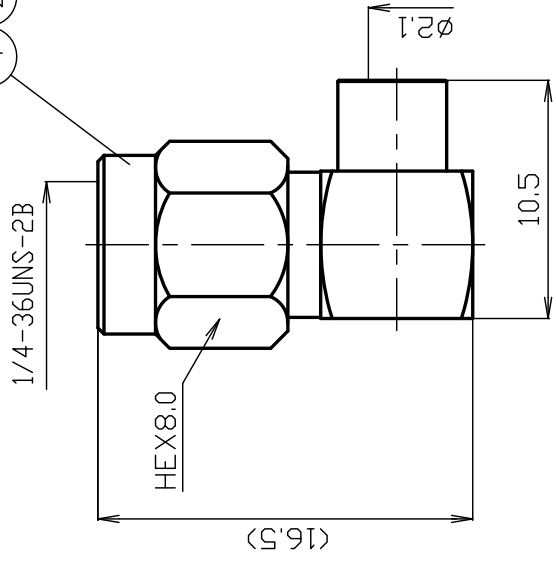




THE DATASHEET OF SMA-LP-141



①②③④⑤



*1: STAINLESS STEEL
 *2: PASSIVATE

8	COVER	BRASS	1	Ni	
7	INSULATOR B	PTFE	1	--	
6	CENTER PIN	BRASS	1	Au	
5	BODY	BRASS	1	Au	
4	HOLDING RING	*1	1	--	
3	GASKET	SILICONE	1	--	
2	INSULATOR A	PTFE	1	--	
1	COUPLING NUT	*1	1	*2	
NO.	DESCRIPTION	MATERIAL	Q'TY	FINISH	REMARK

SCALE 3/1

DRAWN 渡邊 直弘
 '23.05.11

CHECKED 檜 澤
 '23.05.11

APP

UNIT mm

DATE 2023.05.11

PROJECTION



株式会社 TOYO

PRODUCT SPECIFICATION

Part number: SMA-LP-141

No. 1150709

Drawing number: J-1152024

Nominal 1 Standard JEITA RC-5234
 2 Voltage rating AC 500V
 3 Frequency range 10GHz
 4 Impedance 50Ω
 5 Operating Temperature Range -40°C~+85°C



株式会社 トーコネ
 TO-CONNE CO.,LTD.

		Test Items	Procedures/Test Method	Requirements
1 S T R U C T U R E		Design and Construction	Specified on relevant product drawing (Drawing number:J-1152024)	No defects or abnormalities
	2	Materials		
	3	Finish		
4	E L E C T R I C A L	Insulation Resistance	DC 500V	5000 MΩ (Min.)
5		Withstand voltage	1 minute at AC 1500V	No defects or abnormalities
6		Contact resistance	The method of which, the voltage drop of the contact duration should not exceed about 1-kHz AC or 1mV DC	3mΩ (max.)
7		V.S.W.R	DC ~ 6GHz	1.3 (max)
8	M E C H A N I C A L	Compatibility	Mating with connector complying with the standard	No defects or abnormalities
9		Cable tensile strength	Axial tensile force of 245N or more	No defects or abnormalities
10		Engagement Force	When axial tensile force of 180N is applied	No defects or abnormalities
11		Cable group	0.141inch Semi-rigid Cable	

	REVISIONS	DATE
1		
2		
3		

Checked	Approved	Proof mark	Prepared
三 23.05.11 村	山 23.05.11 本	檜 23.05.11 澤	渡邊 '23.05.11 直弘

GKQM-7

SMA-LP-141 Cable Assembly Instructions

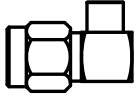
Cable group

0.141Semi-Rigid

All parts of the connector as shown

DRAWING NO. J-1152024

DRAWN	CHECKED	APPROVED	CONFIRMATION
渡邊 '23.05.11 直弘	槽 '23.05.11 澤	山 '23.05.11 本	三 '23.05.11 村



BODY

INSULATOR

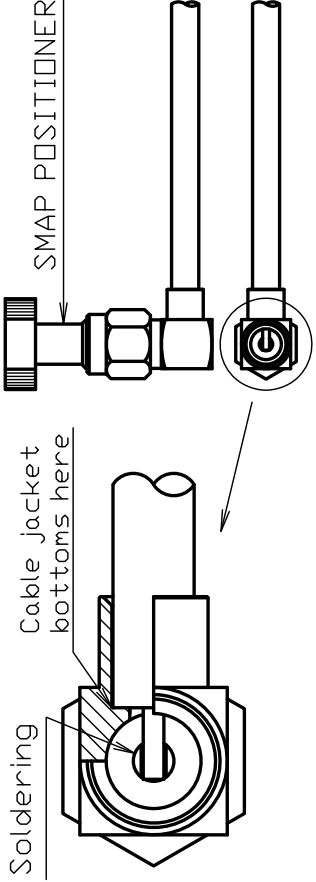
Polish this part with sandpaper etc. will make it easier to solder between the cable and body.

1 Trim cable jacket to the dimensions to the dimensions.



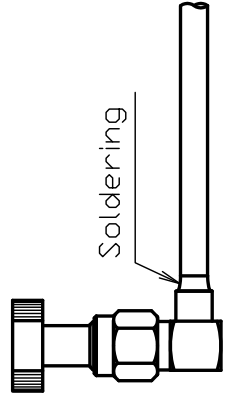
ATTENTION

For semi-rigid cables, polish with sandpaper etc. will make it easier to solder between the cable and body.



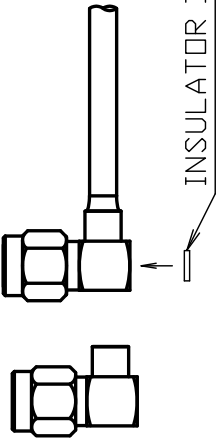
ATTENTION

2 Mate with "SMAP POSITIONER" while soldering. Assemble cable into in connector body and Solder inner conductor center contact. *Remove excess solder



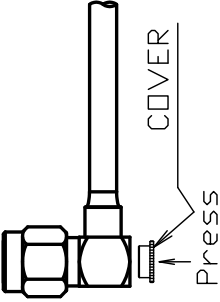
ATTENTION

3 Solder cable to the connector body. Solder evenly around the cable to prevent being pushed out or the cable in due to thermal stress.



ATTENTION

4 Remove the "SMAP POSITIONER" and press fit the cover.



INSULATOR B

COVER

Press

Looking for pricing, stock, or lifecycle information?

Click below to explore more details on WIN SOURCE:

- ⊖ [View SMA-LP-141 on WIN SOURCE](#)
- ⊖ [TYCLON Information](#)

Optimize Your Supply Chain with WIN SOURCE Solutions

- ✓ Global Sourcing Solution
- ✓ Obsolete Management
- ✓ Cost Control Management
- ✓ Shortage Management
- ✓ Alternative Solution
- ✓ Excess Inventory Management