



# THE DATASHEET OF SMA-LR-0.66AS(AU)





# CONNECTOR TERM TRANSLATION

## ■Parts List

| 部品名        | DESCRIPTION                |
|------------|----------------------------|
| 接続スリーブ     | SHELL                      |
| 絶縁体        | INSULATOR                  |
| ガスケット      | GASKET                     |
| ウェーブワッシャー  | WAVE WASHER                |
| ワッシャー      | WASHER                     |
| 本体、シェル     | BODY                       |
| 中心コンタクト    | CENTER PIN                 |
| 圧着スリーブ     | FERRULE                    |
| 締付ナット      | NUT                        |
| 保持リング      | HOLDING RING               |
| ブッシング      | BUSHING                    |
| 平ワッシャー     | FLAT WASHER                |
| 半円平ワッシャー   | HALF FLAT WASHER           |
| スペーサー      | SPACER                     |
| 接続ナット      | COUPLING NUT               |
| 外部コンタクト    | OUTER CONTACT              |
| Oリング       | O-RING                     |
| 六角ナット      | HEX NUT                    |
| クランプ       | CLAMP                      |
| ホルダー       | BARREL                     |
| フタ         | COVER                      |
| 割りクランプ     | SPLIT CLAMP                |
| 留めネジ       | SCREW                      |
| バネリング      | SPRING                     |
| ヒートシンク     | HEAT SINK                  |
| 抵抗器、抵抗素子   | RESISTOR                   |
| スプリングワッシャー | SPRING WASHER              |
| 六角穴留めネジ    | SOCKET HEAD CAP SCREW      |
| ブラケット      | BRACKET                    |
| ブッシュ       | BUSH                       |
| 同軸型避雷管     | COAXIAL LIGHTNING ARRESTER |
| 丸型端子       | ROUND TERMINAL             |
| 減衰素子       | ATTENUATION TERMINAL       |

## ■Parts List

| 部品名     | DESCRIPTION      |
|---------|------------------|
| 表示シール   | STICKER          |
| 熱収縮チューブ | HEAT SHRINK TUBE |
| 丸ナット    | RING NUT         |

## ■Material List

| 材質      | MATERIAL           |
|---------|--------------------|
| 亜鉛ダイカスト | ZnDC               |
| ジラコン    | POM                |
| シリコンゴム  | SILICONE           |
| テフロン    | PTFE               |
| 鉄、炭素工具鋼 | CARBON STEEL       |
| 黄銅      | BRASS              |
| ベリリウム銅  | BERYLLIUM COPPER   |
| リン青銅    | PHOSPHOR BRONZE    |
| 無酸素銅    | OXYGEN-FREE COPPER |
| アルミニウム  | ALUMINUM           |
| ステンレス   | STAINLESS STEEL    |

## ■List of Notations on Drawings

|                  |                 |
|------------------|-----------------|
| 取付穴参考寸法          | MOUNTING HOLE   |
| 最大パネル厚さ、使用可能パネル厚 | PANEL THICKNESS |
| 識別No.            | SERIAL No.      |
| 刻印               | STAMP           |
| Dカット幅            | D FLAT          |
| Hカット幅            | H FLAT          |
| アヤメローレット         | DIAMOND KNURL   |
| タテメローレット         | STRAIGHT KNURL  |
| 識別溝、目印、溝         | GROOVE          |
|                  |                 |
|                  |                 |

## ■Surface List

| 処理      | FINISH            |
|---------|-------------------|
| 三元めっき   | TERNARY PLATING   |
| 黒色アルマイト | ANODAIZING(BLACK) |
| パッシベイト  | PASSIVATE         |

# PRODUCT SPECIFICATIONS

Part No. SMA-LR-0.66AS (Au)

No. 1121614

DWG No. X-1124379




To-Conne Co., Ltd. (TYC)

Nominal 1 Standard

JEITA RC-5234

2 Impedance

50 Ω

| Checked   | Inspected   | Prepared  |
|---|---|---|
|  |  |  |

|    |            | Test Items                             | Procedures/Test method   | Requirements                |
|----|------------|--|--|-----------------------------|
| 1  | DESIGN     | Design & construction                  | Specified on relevant product drawing  |                             |
| 2  |            | Materials                              | (DWG No. X-1124379)  | No defects or abnormalities |
| 3  |            | Finishes                               |  |                             |
| 4  | ELECTRICAL | Insulation Resistance                  | DC 500V  | 5000MΩ (Min.)               |
| 5  |            | Withstanding voltage                   | AC 750V (1 minute.)  | No defects or abnormalities |
| 6  |            | Contact resistance                     | The method of which, the voltage drop of the contact duration should not exceed 1-kHz AC or 1mV DC | 3mΩ (Max.)                  |
| 7  |            | V. S. W. R                             | DC~5GHz<br>5GHz~6GHz   | 1.2 (Max.)<br>1.3 (Max.)    |
| 8  | MECHANICAL | Compatibility                          | Connecting with a standard-compliant connector   | No defects or abnormalities |
| 9  |            | Center contact retaining force         | When using the standard pin gauge 0.28N (Min.)   | No defects or abnormalities |
| 10 |            | Cable tensile strength                 | At axial tensile force 39N (Min.)  | No defects or abnormalities |
| 11 |            | Tensile strength of coupling mechanism | At axial tensile force 180N  | No defects or abnormalities |

GKQM-19-1

|   | Remarks | Date |
|---|---------|------|
| 1 |         |      |
| 2 |         |      |
| 3 |         |      |

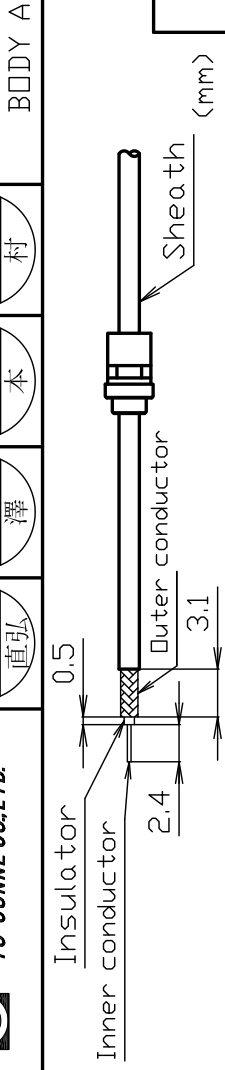
# SMA-LR-0.66AS(Au) Cable Assembly Instructions

Cable group

CD-6F-DSB-CX50  
1X32AWG(7/0,08) Sheath outer diameter

DRAWING NO. X-1124379

| DRAWN              | INSPECTED        | APPROVED         | CHECKED          |
|--------------------|------------------|------------------|------------------|
| 渡邊 直弘<br>'24.01.09 | 檜 澤<br>'24.01.09 | 山 本<br>'24.01.09 | 三 村<br>'24.01.09 |



All parts of the connector as shown



BODY A

CENTER PIN SPACER

1

Slide the body B over the inner conductor to the dimension shown

2

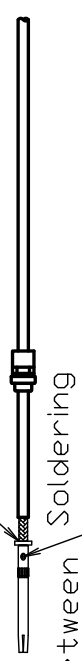
Pre-solder the inner conductor

ATTENTION

The outer diameter after pre-soldering should not be too large.



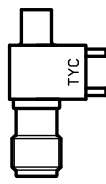
Cable insulation must not be visible



No gap in between

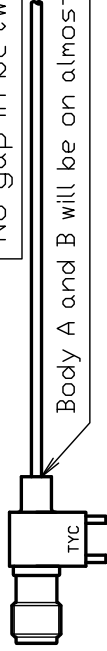
Slide

Install



Soldering

No gap in between

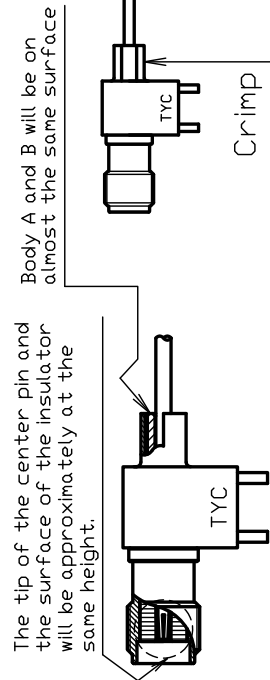
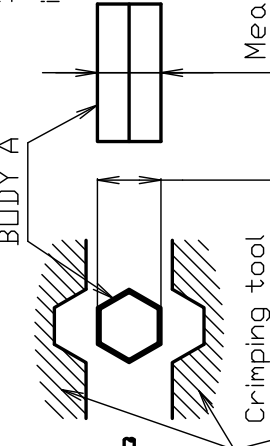


ATTENTION

Install the spacer so that it is flush with the body B. There should be no gap between the spacer and body B.

4

Confirm that BODY B is flush with part A of the crimping tool. When body B is deep, body A and is not visible. The tip of the center insulator will be approximately 1mm from the crimping tool.



Crimping tool

Crimp

TYC

Measuring position

## Looking for pricing, stock, or lifecycle information?

Click below to explore more details on WIN SOURCE:

 [View SMA-LR-0.66AS\(Au\) on WIN SOURCE](#)

 [TYCLON Information](#)

## Optimize Your Supply Chain with WIN SOURCE Solutions

-  Global Sourcing Solution
-  Obsolete Management
-  Cost Control Management
-  Shortage Management
-  Alternative Solution
-  Excess Inventory Management