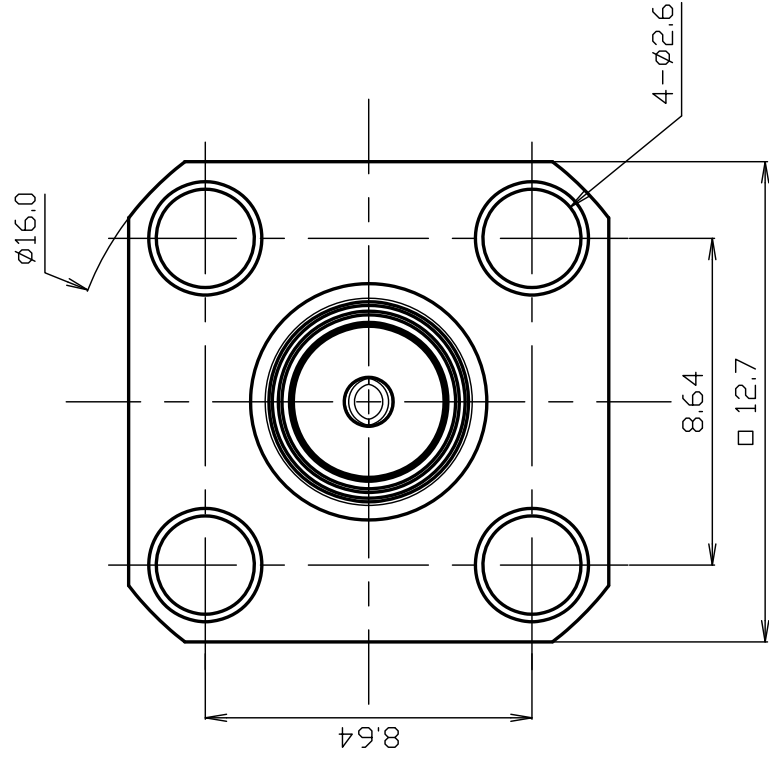




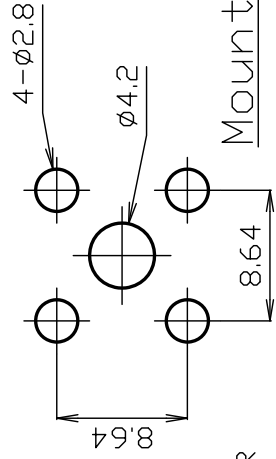
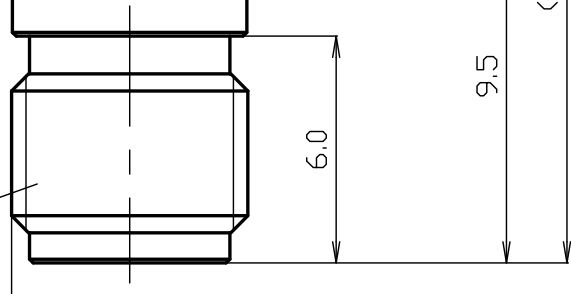
THE DATASHEET OF SMA-R(AU)





2 3 4

1/4-36 UNS-2A



Mounting hole<2/1>

- * 1 : BERYLLIUM COPPER
- * 2 : STAINLESS STEEL
- * 3 : PHOSPHOR BRONZE

NO.	DESCRIPTION	MATERIAL	Q'TY	FINISH	REMARK
7					
6					
5					
4	BUSHING	*3	1	Au	
3	INSULATOR	PTFE	1	--	
2	BODY	*2	1	Au	
1	CENTER PIN	*1	1	Au	

SCALE	5/1
DRAWN	渡邊 直弘
CHECKED	檜 澤
APPR	'23.05.23

PROJECTION	DATE	UNIT
	2023.05.23	mm

LOGO	70-

PRODUCT SPECIFICATION

Part number : SMA-R(Au)

No. 1131091

Drawing number : X-1136135

Nominal 1 Standard	JEITA RC-5234
2 Voltage rating	AC 500V
3 Frequency range	18GHz
4 Impedance	50Ω
5 Operating Temperature Range	-40°C~+85°C



株式会社 トーコネ
TO-CONNE CO.,LTD.

		Test Items	Procedures/Test Method	Requirements
1 S T R U C T U R E		Design and Construction	Specified on relevant product drawing (Drawing number:X-1136135)	No defects or abnormalities
	2	Materials		
	3	Finish		
4	E L E C T R I C A L	Insulation Resistance	DC 500V	1000 MΩ (Min.)
5		Withstand voltage	1 minute at AC 1000V	No defects or abnormalities
6		Contact resistance	The method of which, the voltage drop of the contact duration should not exceed about 1-kHz AC or 1mV DC	Between inner conductors 3mΩ(Max.)
				Between outer conductors 2mΩ(Max.)
7		V.S.W.R	DC ~ 18GHz	1.2 (Max.)
8	M E C H A N I C A L	Compatibility	Mating with connector complying with the standard	No defects or abnormalities
9		Retention force of socket centre contact	When the retention force is measured with a standard test gauge	0.28N(Min.)
10		Engagement Force	When axial tensile force of 180N is applied	No defects or abnormalities
11		Durability	After 500 matings	No defects or abnormalities



	REVISIONS	DATE
1		
2		
3		

Checked	Approved	Proof mark	Prepared
三 23.05.24 村	山 23.05.24 本	檜 23.05.24 澤	渡邊 '23.05.24 直弘

GKQM-7

Looking for pricing, stock, or lifecycle information?

Click below to explore more details on WIN SOURCE:

-  [View SMA-R\(Au\) on WIN SOURCE](#)
-  [TYCLON Information](#)

Optimize Your Supply Chain with WIN SOURCE Solutions

-  Global Sourcing Solution
-  Obsolete Management
-  Cost Control Management
-  Shortage Management
-  Alternative Solution
-  Excess Inventory Management