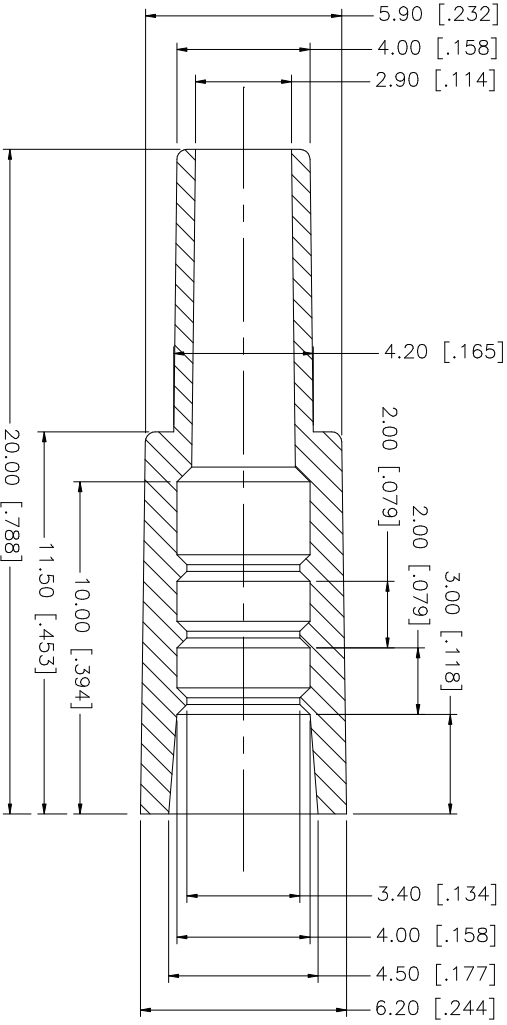




**THE DATASHEET OF
60052-000**



REV.	DATE	DESCRIPTION
NC	02/23/06	INITIAL RELEASE



NO.	DESCRIPTION	MATERIAL	FINISH	QTY	DO NOT SCALE DRAWING	CAD FILE	APPROVALS	DATE	DWG. NO.	REV.	SIZE	SCALE
8									60052-000.DWG	NC	A	NA
7									60052-000.DWG	NC	A	NA
6									60052-000.DWG	NC	A	NA
5									60052-000.DWG	NC	A	NA
4									60052-000.DWG	NC	A	NA
3									60052-000.DWG	NC	A	NA
2	STRAIN RELIEF	PVC	OPTIONAL	1					60052-000.DWG	NC	A	NA
1									60052-000.DWG	NC	A	NA

Amphenol Connex

STRAIN RELIEF BOOT

UNLESS OTHERWISE SPECIFIED DIMENSIONS ARE IN INCHES AND FOR CUSTOMER REFERENCE ONLY.
 TOLERANCES FOR MILLIMETERS ARE:
 0.5 - 8mm ± 0.20mm
 8 - 30mm ± 0.40mm
 30 - 120mm ± 0.50mm
 UNLESS OTHERWISE SPECIFIED TOLERANCES FOR INCHES ARE:
 .020 - .315 = ± 0.007"
 .315 - 1.180 = ± 0.015"
 1.180 - 4.724 = ± 0.020"

APPROVALS	DATE
DRAWN G.R.S.	02/23/06
CHECKED	
ISSUED	
SHEET 1 OF 1	

PART DESCRIPTION	PART NO.
STRAIN RELIEF BOOT	60052-000

Looking for pricing, stock, or lifecycle information?

Click below to explore more details on WIN SOURCE:

 [View 60052-000 on WIN SOURCE](#)

 [Amphenol Information](#)

Optimize Your Supply Chain with WIN SOURCE Solutions

-  Global Sourcing Solution
-  Obsolete Management
-  Cost Control Management
-  Shortage Management
-  Alternative Solution
-  Excess Inventory Management