



Sensors > Temperature Sensors > NTC Sensors > NTC Probes



NTC Probe Type: HVAC/R

Electrical Connection: Open End

Resistance (at 25°C): 10 kΩ

β-Value(25/85): 3435 K

Accuracy (at T_ref): ± .22 @ 25 °C

Features

Product Type Features

Wire/Cladding Type	24 AWG Stranded Insulated Leads
NTC Probe Type	HVAC/R
Sensor Package	Overmold TPE

Configuration Features

Electrical Connection	Open End
-----------------------	----------

Electrical Characteristics

β-Value(25/85)	3435 K
----------------	--------

Mechanical Attachment

Wire Length	1000 mm[39 in]
-------------	----------------

Usage Conditions

T_ref for Resistance	25 °C[77 °F]
Operating Temperature Range	-40 – 125 °C[-40 – 257 °F]
Resistance (at 25°C)	10 kΩ
Accuracy (at T_ref)	± .22 @ 25 °C
Tolerance Resistance	±1 %

Product Compliance

[For compliance documentation, visit the product page on TE.com>](#)



EU RoHS Directive 2011/65/EU	Compliant
EU ELV Directive 2000/53/EC	Compliant
China RoHS 2 Directive MIIT Order No 32, 2016	No Restricted Materials Above Threshold
EU REACH Regulation (EC) No. 1907/2006	Current ECHA Candidate List: JAN 2025 (247) Candidate List Declared Against: JUNE 2024 (241) Does not contain REACH SVHC
Halogen Content	Not Yet Reviewed for halogen content
Solder Process Capability	Not reviewed for solder process capability

Product Compliance Disclaimer

This information is provided based on reasonable inquiry of our suppliers and represents our current actual knowledge based on the information they provided. This information is subject to change. The part numbers that TE has identified as EU RoHS compliant have a maximum concentration of 0.1% by weight in homogenous materials for lead, hexavalent chromium, mercury, PBB, PBDE, DBP, BBP, DEHP, DIBP, and 0.01% for cadmium, or qualify for an exemption to these limits as defined in the Annexes of Directive 2011/65/EU (RoHS2). Finished electrical and electronic equipment products will be CE marked as required by Directive 2011/65/EU. Components may not be CE marked. Additionally, the part numbers that TE has identified as EU ELV compliant have a maximum concentration of 0.1% by weight in homogenous materials for lead, hexavalent chromium, and mercury, and 0.01% for cadmium, or qualify for an exemption to these limits as defined in the Annexes of Directive 2000/53/EC (ELV). Regarding the REACH Regulation, the information TE provides on SVHC in articles for this part number is based on the latest European Chemicals Agency (ECHA) 'Guidance on requirements for substances in articles' posted at this URL: <https://echa.europa.eu/guidance-documents/guidance-on-reach>

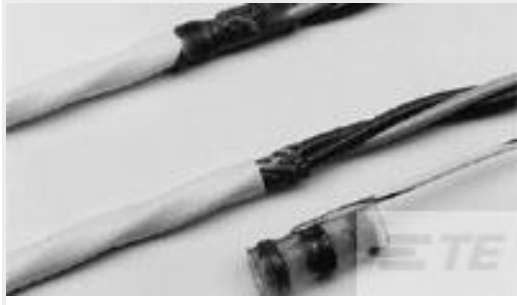
Compatible Parts



Also in the Series | MEAS PRO4



Customers Also Bought



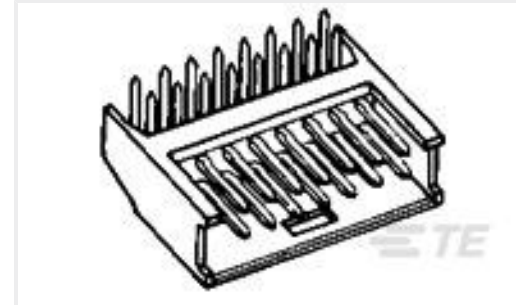
TE Part #336765-000
CWT-3807-W1



TE Part #ANT-5GW-SPS1-1
Antenna 5G LTE IP67 Puck RG174 1M
SMA



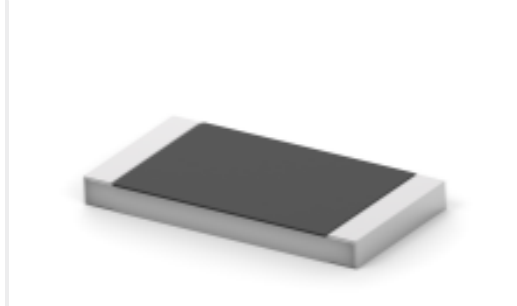
TE Part #166292-1
20DF COSI SOCKET



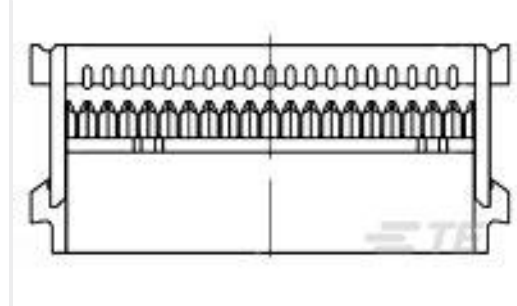
TE Part #280522-2
2X12P MODU II SHRD HDR, RT ANG,
AU



TE Part #6-1393127-0
PRD-11DY0-110=PRD



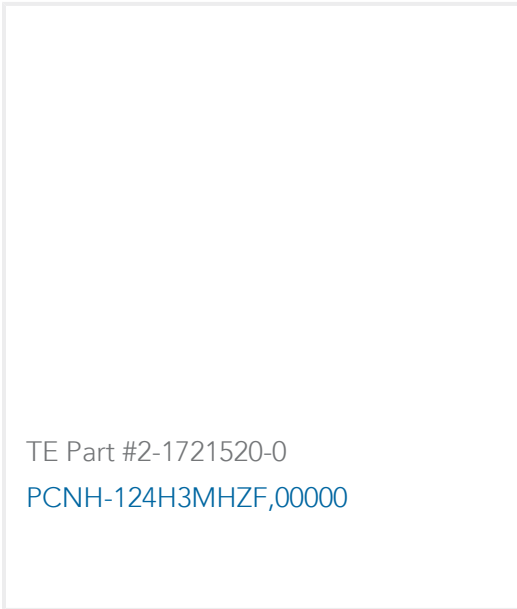
TE Part #CAT-C339-A76
SMD Power Resistor: 1 Watt, 3520
Series



TE Part #1658526-5
609-1041LF FEM SOCKET, LEAD FREE



TE Part #1734795-1
RJ45, 8P8C, SHD, W/O LED, DIP 6u"



TE Part #2-1721520-0
PCNH-124H3MHZF,00000

Documents

Datasheets & Catalog Pages

Single Insulated TPE OM Probe 5x15mm

English

Looking for pricing, stock, or lifecycle information?

Click below to explore more details on WIN SOURCE:

[View GA10K3435STM010 on WIN SOURCE](#)

[TE Connectivity Information](#)

Optimize Your Supply Chain with WIN SOURCE Solutions

- ✓ Global Sourcing Solution
- ✓ Obsolete Management
- ✓ Cost Control Management
- ✓ Shortage Management
- ✓ Alternative Solution
- ✓ Excess Inventory Management