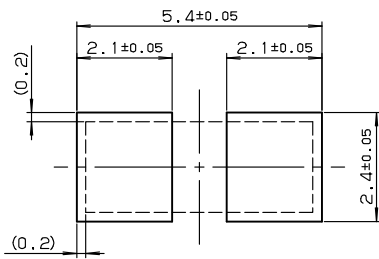


SERIES

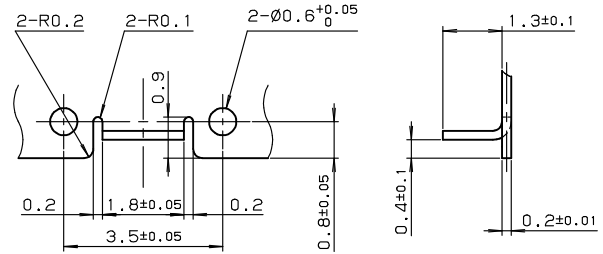
8069

シールドロック H=3.0mm

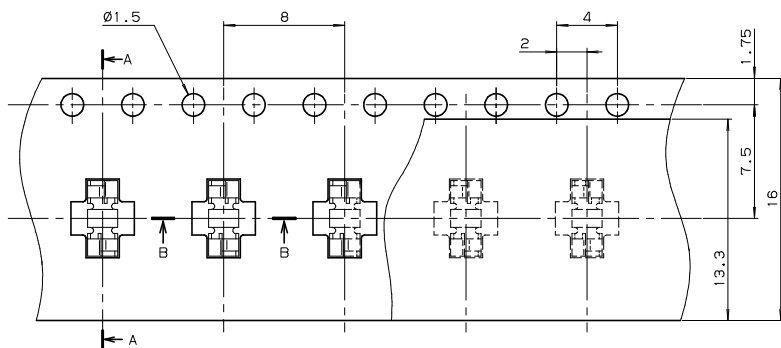
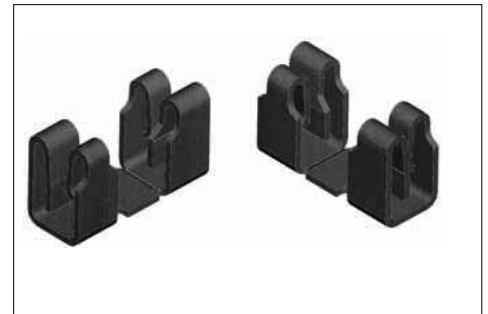
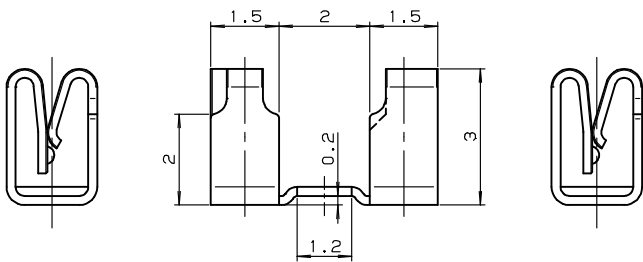
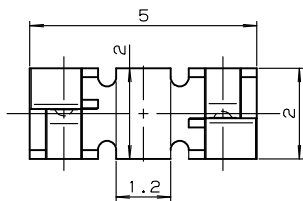
SHIELD LOCK



推奨パターンレイアウト
RECOMMENDED PATTERN LAYOUT

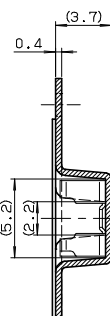


シールドケース形状
SHIELDING CASE FORM

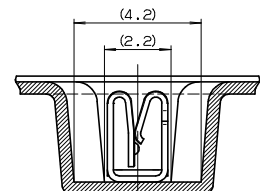


引出し方向

USED DIRECTION OF FEED



SECT. A-A



SECT. B-B

注文コード / Ordering Code

Part No. 04 8069 000 000 800 +

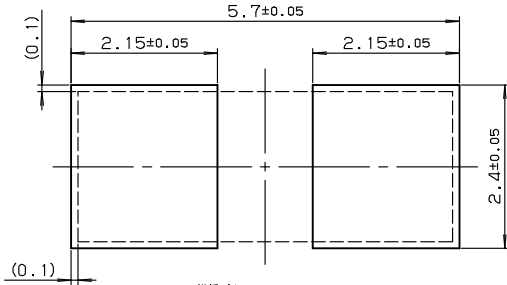
車載機器などの高い信頼性が求められる機器に本製品をご検討の場合は、弊社までお問い合わせください。
If you use the product for equipment requiring high reliability such as automotive equipment, please contact us beforehand.

SERIES

8069

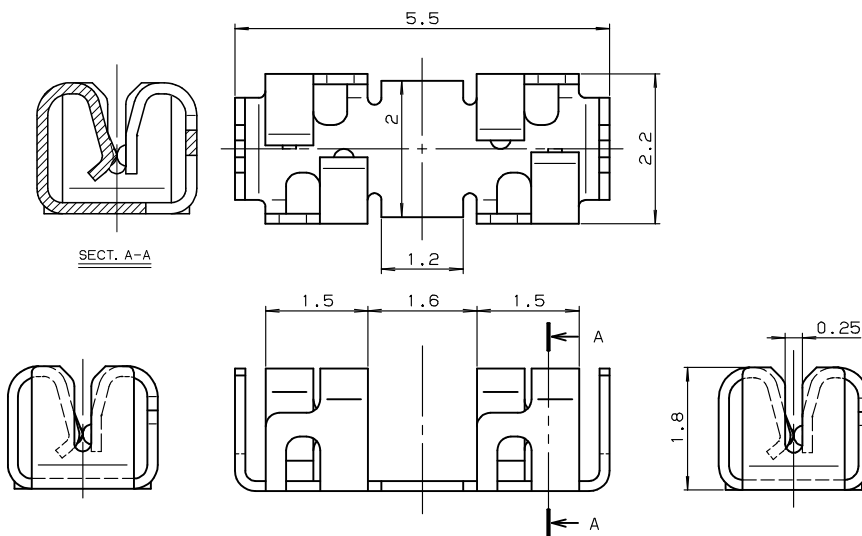
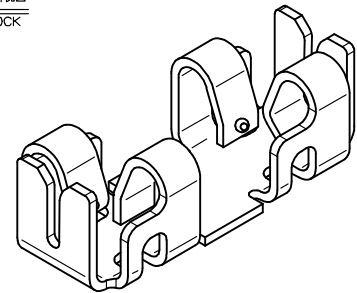
シールドロック H=1.8mm

SHIELD LOCK

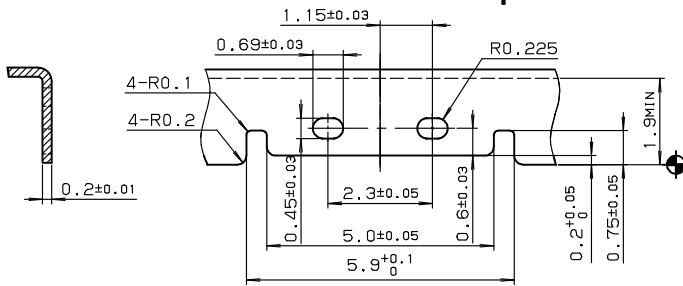
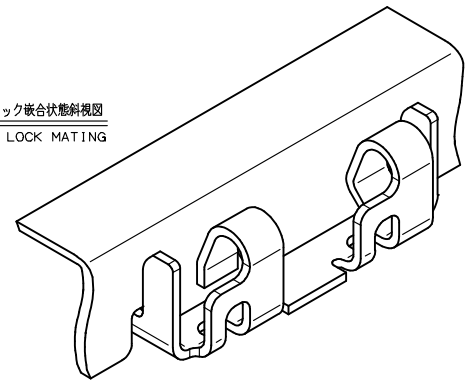


推奨パターンレイアウト
RECOMMENDED PATTERN LAYOUT

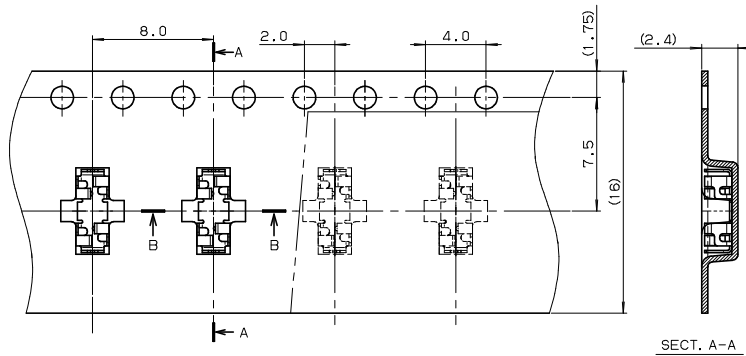
シールドロック斜視図
SHIELD LOCK



シールドロック嵌合状態斜視図
SHIELD LOCK MATING



シールドケース形状
SHIELDING CASE FORM



SECT. A-A

SECT. B-B

注文コード / Ordering Code

Part No. 04 8069 000 100 800 +



車載機器などの高い信頼性が求められる機器に本製品をご検討の場合は、弊社までお問い合わせください。
If you use the product for equipment requiring high reliability such as automotive equipment, please contact us beforehand.

Looking for pricing, stock, or lifecycle information?

Click below to explore more details on WIN SOURCE:

- [⊖ View 048069000000800+ on WIN SOURCE](#)
- [⊖ AVX Corp/Kyocera Corp Information](#)

Optimize Your Supply Chain with WIN SOURCE Solutions

- ✓ Global Sourcing Solution
- ✓ Obsolete Management
- ✓ Cost Control Management
- ✓ Shortage Management
- ✓ Alternative Solution
- ✓ Excess Inventory Management