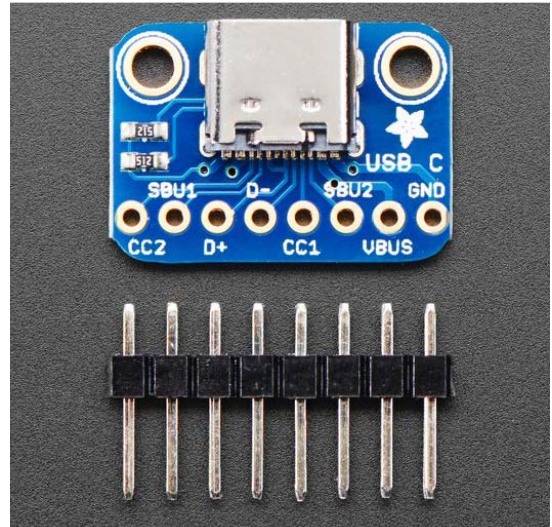
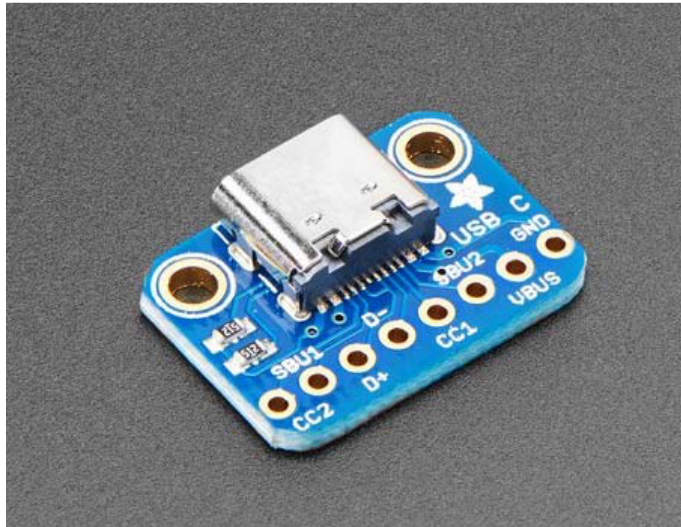




**THE DATASHEET OF**  
**4090**





## Adafruit USB C Breakout Board – Downstream Connection

PRODUCT ID: 4090

Throw out all those Mini and Micro B USB cables you have in a plastic bin – the next generation of USB connectors is here with USB C! You will start to see these connectors pop up on all sorts of devices, as the industry moves from micro B or lightning to the new standard. Well, at least until the next standard comes out. USB C features a symmetric/reversible connector, more data pins and higher current output capability. But, for most developers, the pin usage you know and love from older USB will work just fine. This breakout gives you all the basics you need and a resistor configuration that mimics classic USB 2.0 for a *downstream connection*.

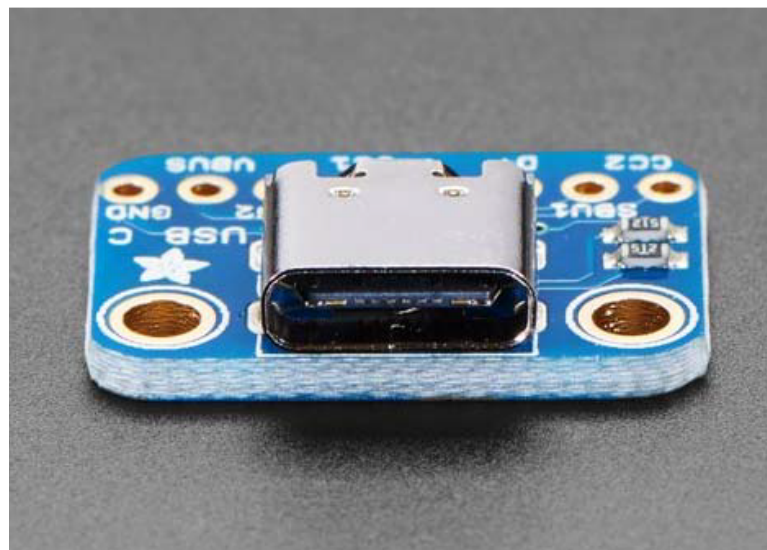
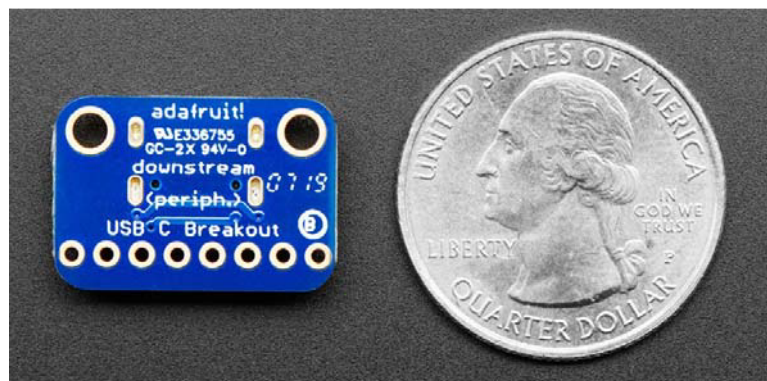
The two 5.1K resistors on the CC1 pins indicate to the upstream port to provide 5V and up to 1.5A (whether the upstream can supply that much current depends on what you're connecting to).

For most usages, you can just connect VBUS to your 5V input, GND to ground, and D+ and D- as you expect. You can monitor the CC and SBU pins to determine cable polarity, or send side-band data. Or leave them disconnected

For more details, we like this Introduction to USB C app note <http://ww1.microchip.com/downloads/en/appnotes/00001953a.pdf>

Product Dimensions: 20.4mm x 14.2mm x 5.0mm / 0.8" x 0.6" x 0.2"



Product Weight: 1.3g / 0.0oz



<https://www.adafruit.com/product/4090/3-14-19>

## Looking for pricing, stock, or lifecycle information?

Click below to explore more details on WIN SOURCE:

-  [View 4090 on WIN SOURCE](#)
-  [Pololu Corporation Information](#)

## Optimize Your Supply Chain with WIN SOURCE Solutions

-  Global Sourcing Solution
-  Obsolete Management
-  Cost Control Management
-  Shortage Management
-  Alternative Solution
-  Excess Inventory Management