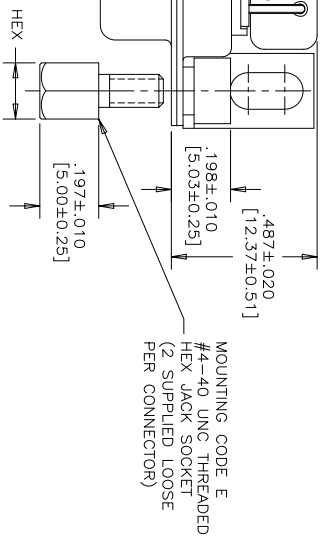




**THE DATASHEET OF  
FCC17-B25PA-41B**



B C D E F



MOUNTING CODE E  
#4-40 UNC THREADED  
HEX JACK SOCKET  
(2 SUPPLIED LOOSE  
PER CONNECTOR)

ORDERING CODE: FCC17 - E09PA - 24BG  
SERIES \_\_\_\_\_  
FCC17=FILTERED D-SUB  
SIZE/NUMBER OF CONTACTS  
E09, A15, B25, OR C37  
CONNECTOR STYLE \_\_\_\_\_  
P=PIN  
S=SOCKET  
TERMINATION TYPE \_\_\_\_\_  
A=.318" [8.08] FOOTPRINT

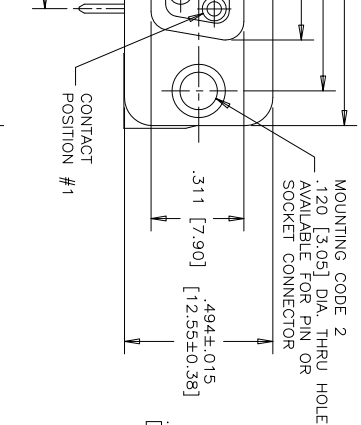
REV	ECN, ERN NO.	DATE	APPRD.
F	PRODUCT DRAWING (EAR 14155)	JAN21/13	K.L.

REVISIONS

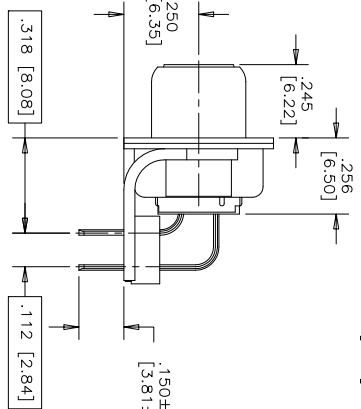
CONTACT FINISH/GOLD THICKNESS  
NO DIGIT=STANDARD 15 MICRONS  
[0.38 MICRONS] GOLD ON  
MATING AREA  
G=50 MICRONS [1.27 MICRONS]  
GOLD ON MATING AREA  
MODIFIER  
B=METAL MOUNTING BRACKETS

FILTER CAPACITANCE  
D=50 pF  
B=100 pF  
O=180 pF  
T=220 pF  
F=330 pF  
L=380 pF  
1=470 pF  
2=680 pF  
4=820 pF

REFER TO AMPHENOL CATALOGUE FOR  
FILTER PERFORMANCE CHARACTERISTICS

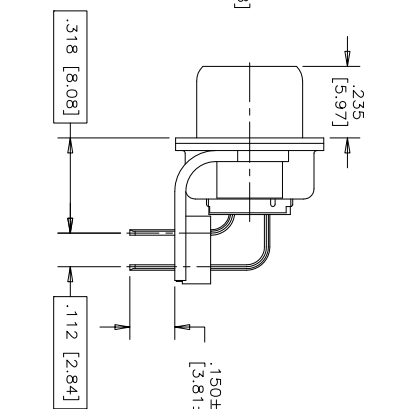
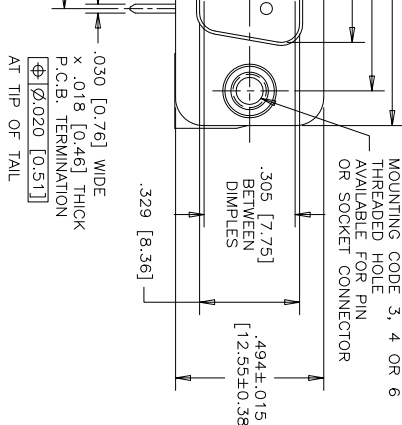


MOUNTING CODE 2  
.120 [3.05] DIA. THRU HOLE  
AVAILABLE FOR PIN OR  
SOCKET CONNECTOR

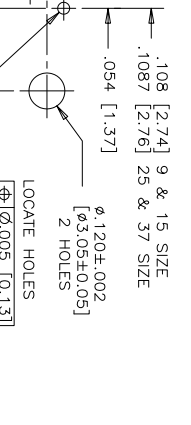


MOUNTING CODE 3, 4 OR 6  
THREADED HOLE  
AVAILABLE FOR PIN  
OR SOCKET CONNECTOR

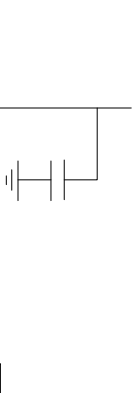
NOTES:  
1. MATERIALS:  
- SHELL: STEEL, TIN PLATED  
- CONTACTS: PHOSPHOR BRONZE, PLATED WITH GOLD  
OVER 50µ [1.27 MICRONS] MINIMUM NICKEL IN THE  
MATING AREA AND 100µ [2.54 MICRONS] MINIMUM  
TIN-LEAD ON THE TAILS.  
- INSULATOR: ENGINEERING THERMOPLASTIC, GLASS  
REINFORCED, UL FLAMMABILITY RATING 94V-0, COLOUR:  
BLACK  
- MOUNTING HARDWARE, STEEL OR COPPER ALLOY, TIN OR  
NICKEL PLATED.



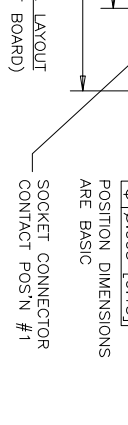
- CONTACT RESISTANCE: 15 MILLIOHMS MAXIMUM
- INSULATION RESISTANCE: 3000 MEGOHMS MINIMUM
- CURRENT RATING: 5 AMPS MAXIMUM
- OPERATING TEMPERATURE: -40°C TO 85°C
- TOLERANCE UNLESS INDICATED OTHERWISE: ±.005 [0.13]



CAPACITANCE SCHEMATIC  
FOR EACH POSITION



SIZE	STYLE	A±.015 [0.38]	B±.005 [0.13]	C±.005 [0.13]	D±.005 [0.13]	E BSC. [1.097]
E09	PIN	1.213 [30.81]	.666 [16.92]	.984 [24.99]	.432 [10.97]	
A15	SOCKET	1.541 [39.14]	.994 [25.25]	1.312 [33.32]	.756 [19.20]	
B25	PIN	2.088 [53.04]	1.534 [38.96]	1.852 [47.04]	1.304 [33.12]	
C37	SOCKET	2.729 [69.32]	2.182 [55.42]	2.500 [63.50]	1.956 [49.68]	



FOR ANY PURPOSE OR USED FOR MANUFACTURING  
FROM AMPHENOL CANADA CORP.

Amphenol Canada Corp.

DRAWN	LESSAJEE	DATE	99/03/04
DESIGNED			
CHECKED	K.LAMBIE		99/09/29
1. E. APPRD.			
Q. A. APPRD.			
DWG. APPRD.			
ENG. REL. NO.			
REF.			
DIMENSIONS ARE IN CODE ID. NO.			
INCHES [mm]		03554	

TITLE  
FCC17 SERIES FILTERED D-SUB CONNECTOR,  
PIN & SOCKET, RIGHT ANGLE .318 [8.08] F/P,  
METAL MOUNTING BRACKET



DWG. DRAWING NO. P-FCC17-XXXXA-XXBX

SCALE 3/1 WT. SURF. SHEET 1 of 1

B C D E F

## Looking for pricing, stock, or lifecycle information?

Click below to explore more details on WIN SOURCE:

-  [View FCC17-B25PA-41B on WIN SOURCE](#)
-  [Amphenol Commercial Products Information](#)

## Optimize Your Supply Chain with WIN SOURCE Solutions

-  Global Sourcing Solution
-  Obsolete Management
-  Cost Control Management
-  Shortage Management
-  Alternative Solution
-  Excess Inventory Management