

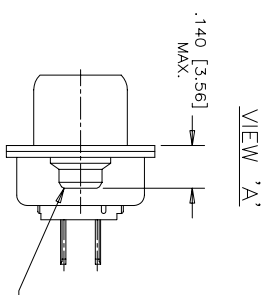


**THE DATASHEET OF  
FCC17E09SE290**



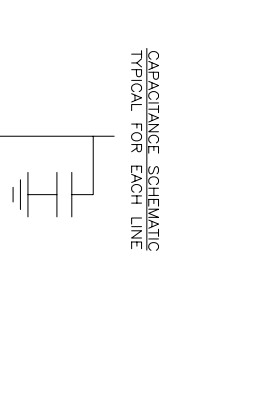
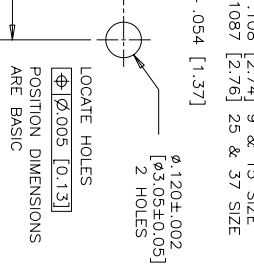
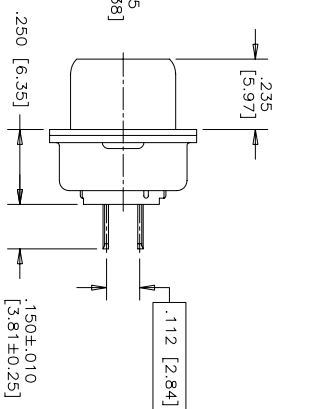
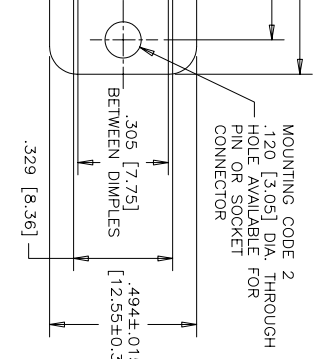
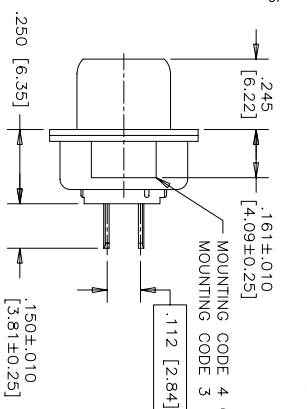
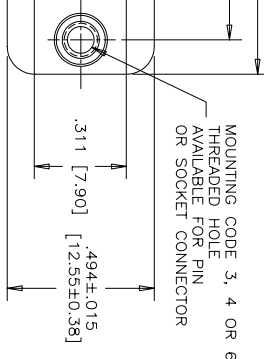
-.030 [0.76] WIDE  
x .018 [0.46] THICK  
P.C.B. TERMINATION  
Φ [0.020] [0.51]  
AT TIP OF TAIL

MOUNTING CODE E  
#4-40 UNC THREADED  
HEX JACK SOCKET  
(2 SUPPLIED LOOSE  
PER CONNECTOR)



ORDERING CODE: F C C 1 7 - E 0 9 P E - 4 4 0 G  
SERIES \_\_\_\_\_  
SIZE/NUMBER OF CONTACTS \_\_\_\_\_  
E09, A15, B25, OR C37  
CONNECTOR STYLE \_\_\_\_\_  
P=PIN  
S=SOCKET  
TERMINATION TYPE \_\_\_\_\_  
E=VERTICAL MOUNT PCB TAIL  
MOUNTING CODE 3 (SIZE E09,  
A15 & B25) RIVET SIDE VIEW

CONTACT FINISH/GOLD THICKNESS  
NO DIGIT=STANDARD 15 MICRONS  
[0.38 MICRONS] GOLD ON MATING AREA  
G=50 MICRONS [1.27 MICRONS]  
GOLD ON MATING AREA  
MODIFIER  
O=STANDARD  
FILTER CAPACITANCE  
D=50 PF 5±1000 PF  
B=100 PF 7±1200 PF  
O=180 PF E=2200 PF  
F=330 PF 5±2500 PF  
1=320 PF 8±27000 PF  
4=820 PF N=NOT FILTERED  
REFER TO AMPHENOL CATALOGUE FOR  
FILTER PERFORMANCE CHARACTERISTICS  
MOUNTING  
2=120 [3.05] DIA THROUGH HOLE  
3=#4-40 UNC SELF-LOCKING THREAD  
4=#4-40 UNC THREAD  
5=#4-40 UNC THREADED STANDOFF  
6=M3 x 0.5 THREAD  
9=STANDOFF WITH BOARDLOCK &  
#4-40 THREADED JACK SOCKETS  
INSTALLED  
A=#4-40 THREADED STANDOFF WITH  
BOARDLOCK  
E=CODE 4 MOUNTING WITH #4-40 UNC  
HEX JACK SOCKET SUPPLIED  
J=M3 x 0.5 THREADED STANDOFF WITH  
BOARDLOCK



SIZE	STYLE	A±.015 [0.38]	B±.005 [0.13]	C±.005 [0.13]	D±.005 [0.13]	E BSC. [0.13]
E09	PIN SOCKET	1.213 [30.81]	-.643 [16.33]	.666 [16.92]	.984 [24.99]	4.32 [110.97]
A15	PIN SOCKET	1.541 [39.14]	-.971 [24.66]	.994 [25.25]	1.312 [33.32]	7.56 [192.0]
B25	PIN SOCKET	2.088 [53.04]	-.1511 [38.38]	1.534 [38.96]	1.852 [47.04]	1.304 [33.12]
C37	PIN SOCKET	2.729 [69.32]	-.2159 [54.84]	2.182 [55.42]	2.500 [63.50]	1.956 [49.68]

- NOTES:
- MATERIALS: - SHELLS - TIN PLATED STEEL  
- CONTACTS - PHOSPHOR BRONZE PLATED WITH GOLD OVER NICKEL ON THE MATING AREA AND TIN-LEAD ON THE TERMINALS  
- INSULATOR - ENGINEERING THERMOPLASTIC, FLAMMABILITY RATING UL94V-0, BLACK.
  - CONTACT RESISTANCE: 15 MILLIOHMS MAXIMUM.
  - INSULATION RESISTANCE: 3000 MEGOHMS MINIMUM.
  - CURRENT RATING: 5 AMPS MAXIMUM  
2 AMPS FILTERING MAXIMUM
  - OPERATING TEMPERATURE: -40°C TO 85°C.
  - TOLERANCE, UNLESS INDICATED OTHERWISE, ±.005 [0.13].

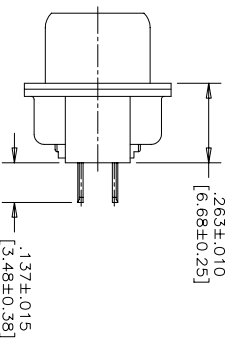
ABOUT (WARD)  
LOCATE HOLES  
Φ.120±.002  
Φ.3.05±0.05  
2 HOLES  
POSITION DIMENSIONS ARE BASIC  
SEE SHEET #2 FOR ADDITIONAL MOUNTING OPTION VIEWS  
FARRY INFORMATION AND SUCH INFORMATION FOR ANY PURPOSE OR USED FOR MANUFACTURING PERMISSION FROM AMPHENOL CANADA CORP.

DESIGNED	K.LAMBLIE	DATE	97/11/27
CHECKED			
1. E. APPRD.			
DWG. APPRD.			
ENG. REL. NO.			
REF.			
DIMENSIONS ARE IN CODE TO. NO. INCHES [mm] 03554			
SCALE	3/1	WT.	
SUPP.		SHEET	1 OF 2

Amphenol Canada Corp.  
TITLE FCC17 FILTERED D-SUB, VERTICAL MOUNT PCB TAIL, PIN & SOCKET  
DWG. DRAWING NO. P-FCC17-XXXXE-XXOX  
REV. J

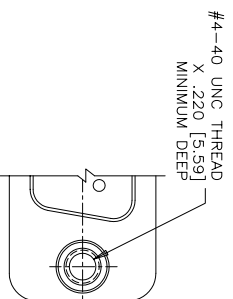
REV. REVISIONS		DATE	APPRD.
REV	ECN, ERN NO.		
J	PRODUCT DRAWING (EAR 12782)	JUN27/05	K.L.

ADDITIONAL MOUNTING OPTIONS AVAILABLE  
FOR PIN OR SOCKET CONNECTOR



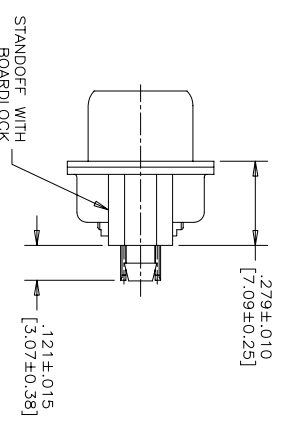
SIDE VIEW

MOUNTING CODE 5



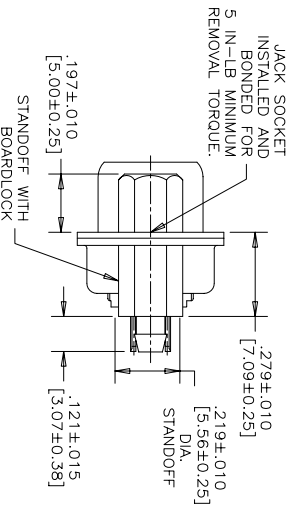
PARTIAL FRONT VIEW

MOUNTING CODE A



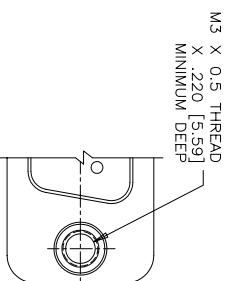
SIDE VIEW

2



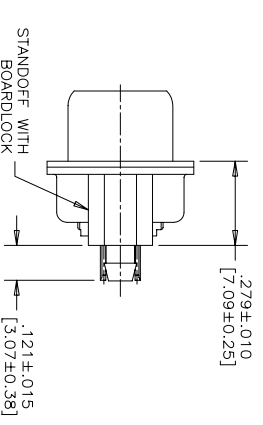
SIDE VIEW

MOUNTING CODE 9



PARTIAL FRONT VIEW

MOUNTING CODE J



SIDE VIEW

3

DRAWN	LESSAUEE	DATE	97/12/01
DESIGNED	K.LAMBIE		97/11/27
CHECKED			
I. E. APPRD.			
Q. A. APPRD.			
DWG. APPRD.			
ENG. REL. NO.			
REF.			
DWG. NO.			
DWG. REL. NO.			
REF.			
DWG. NO.			
DWG. REL. NO.			
SCALE	3/1	WT.	
SURF.			
SHEET	2	OF	2

Amphenol Canada Corp.  
FCC17 FILTERED D-SUB,  
VERTICAL MOUNT PCB TAIL,  
PIN & SOCKET

4

ARY INFORMATION AND SUCH INFORMATION  
FOR ANY PURPOSE OR USED FOR MANUFACTURING  
SION FROM AMPHENOL CANADA CORP.

B

C

D

E

F

## Looking for pricing, stock, or lifecycle information?

Click below to explore more details on WIN SOURCE:

- ⊖ [View FCC17E09SE290](#) on WIN SOURCE
- ⊖ [Amphenol Commercial Products](#) Information

## Optimize Your Supply Chain with WIN SOURCE Solutions

- ✓ Global Sourcing Solution
- ✓ Obsolete Management
- ✓ Cost Control Management
- ✓ Shortage Management
- ✓ Alternative Solution
- ✓ Excess Inventory Management