



**THE DATASHEET OF
2450AT44A100E**



“High Frequency Ceramic Solutions”

2.45 GHz Chip Antenna

P/N 2450AT44A100

Detail Specification: 02/19/03

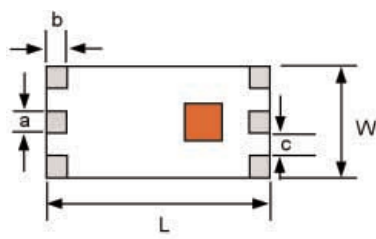
Page 1 of 3

Part Number	Frequency (MHz)	Peak Gain (XZ-V)	Ave. Gain (XZ-V)	Return Loss
2450AT44A100_	2400 - 2500	1.3 dBi typ.	0 dBi typ.	9.5 dB min.

Input Power	Impedance	Operating Temperature Range	Reel Qty
3 Watts max	50 Ω	-40 to +85°C	1000

Mechanical Dimensions

	L	W	T	a	b	c
Inches	0.299 ± .012	0.138 ± .008	0.051 ± .004	0.028 ± .008	0.020 ± .012	0.028 ± .008
mm	7.6 ± 0.3	3.5 ± 0.2	1.3 ± 0.1	0.7 ± 0.2	0.5 ± 0.3	0.7 ± 0.2



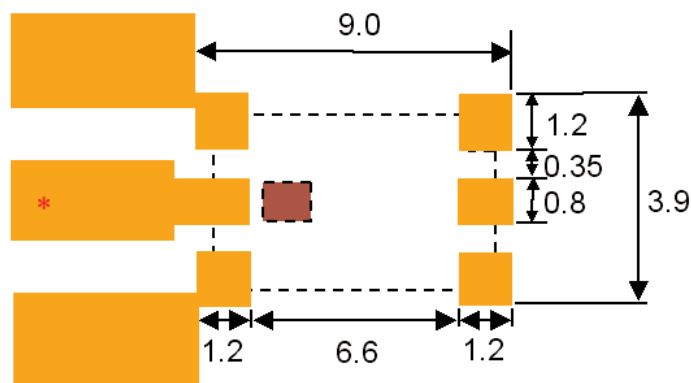
No.	Terminal Name	No.	Terminal Name
①	GND	④	NC
②	Feed Point	⑤	NC
③	GND	⑥	NC

Mounting Considerations

Mount these devices with brown colored side facing up.

Line width should be designed to provide 50Ω impedance matching characteristics.

Units: mm



Johanson Technology, Inc. reserves the right to make design changes without notice.
All sales are subject to Johanson Technology, Inc. terms and conditions.

“High Frequency Ceramic Solutions”

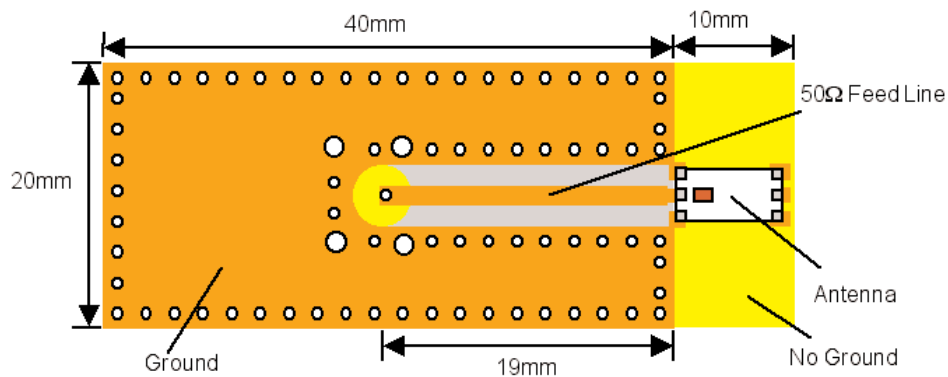
2.45 GHz Chip Antenna

Detail Specification: 02/19/03

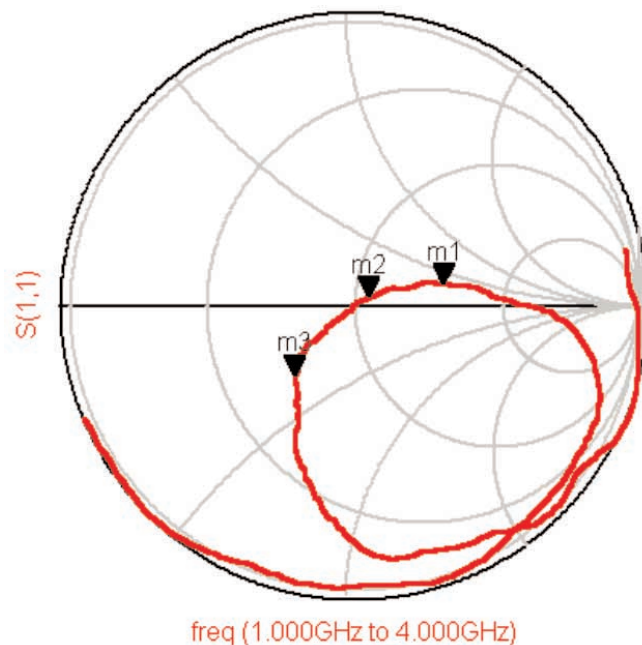
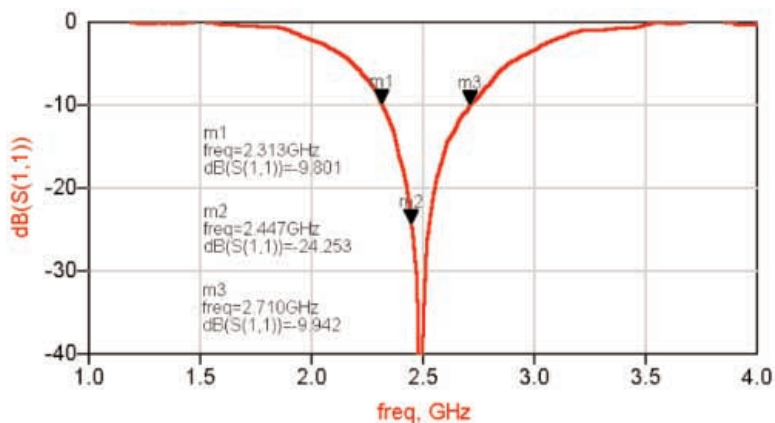
P/N 2450AT44A100

Page 2 of 3

Test Board for Electrical Characteristic Measurements



Typical Return Loss for P/N 2450AT44A100



“High Frequency Ceramic Solutions”

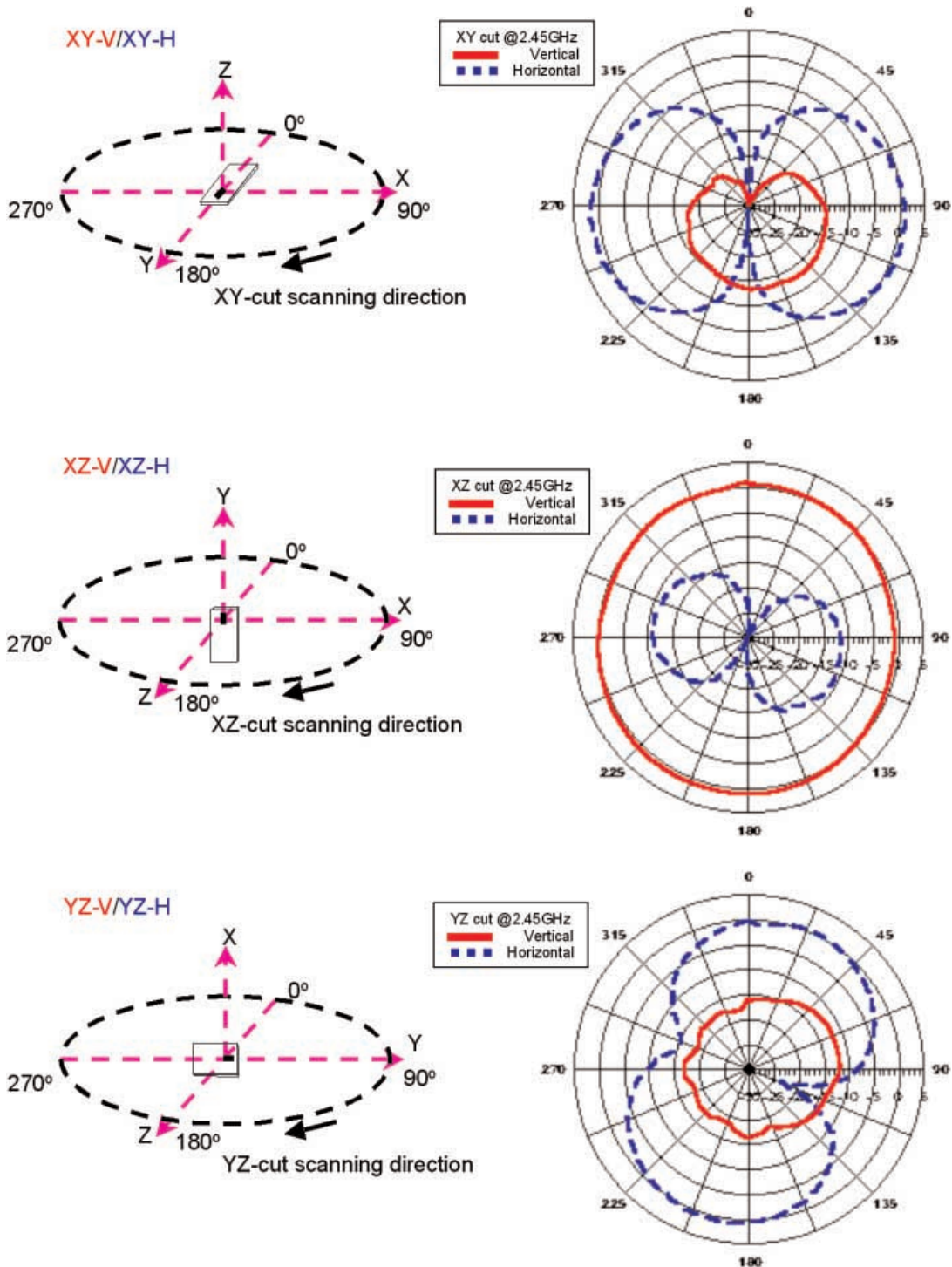
2.45 GHz Chip Antenna

Detail Specification: 02/19/03

P/N 2450AT44A100

Page 3 of 3

Typical Radiation Patterns for P/N 2450AT44A100



Looking for pricing, stock, or lifecycle information?

Click below to explore more details on WIN SOURCE:

 [View 2450AT44A100E on WIN SOURCE](#)

 [Johanson Technology Inc. Information](#)

Optimize Your Supply Chain with WIN SOURCE Solutions

-  Global Sourcing Solution
-  Obsolete Management
-  Cost Control Management
-  Shortage Management
-  Alternative Solution
-  Excess Inventory Management