



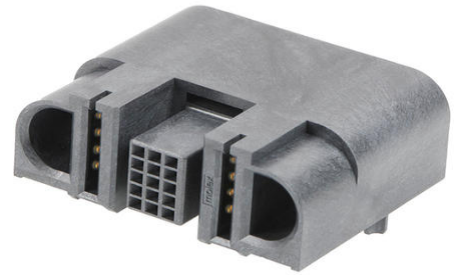
Part Number : [2141150011](#)

Product Description : EXTreme Guardian Right-Angle Receptacle Assembly with Guide Receivers, 1 Power Circuit, 15 Signal Circuits, 1 Power Circuit

Series Number : 214115

Status : Active

Product Category : Board-to-Board Connectors



Documents and Resources

Drawings

[2141150011_sd.pdf](#)

3D Models and Design Files

[STEP AP242](#)

[SOLIDWORKS](#)

[Creo](#)


[Symbol and Footprint \(Multi-Format\)](#)

Specifications

[2141130000-PS-000.pdf](#)

Product Environment Compliance

Compliance

GADSL/IMDS	Not Relevant
China RoHS	 per SJ/T 11365-2006
EU ELV	Not Relevant
Low-Halogen Status	Low-Halogen per IEC 61249-2-21
REACH SVHC	Not Contained per D(2025)6375-DC (05 Nov 2025) SCIP:8d17c6d6-e5a2-4045-b79a-76a746536153
EU RoHS	Compliant per EU 2015/863

[Compliance Statements](#)

- EU RoHS

- REACH SVHC
- Low-Halogen

Industry Documents

- IPC 1752A Class C
- IPC 1752A Class D
- Molex Product Compliance Declaration
- IEC-62474
- chemSHERPA (xml)

Substances of Interest

- PFAS

EU RoHS Certificate of Compliance

Additional Product Compliance Information

Part Details

General

Status	Active
Category	Board-to-Board Connectors
Series	214115
Description	EXTreme Guardian Right-Angle Receptacle Assembly with Guide Receivers, 1 Power Circuit, 15 Signal Circuits, 1 Power Circuit
Application	Board-to-Board, Power, Signal
Component Type	PCB Receptacle, Receptacle
Product Name	EXTreme Guardian HD
UPC	193264618729

Agency

CSA	LR19980
UL	E29179

Electrical

Current - Maximum per Contact	80.0A
Voltage - Maximum	125V

Physical

Circuits (Loaded)	17
-------------------	----

Circuits (maximum)	17
Color - Resin	Black
Durability (mating cycles max)	200
Flammability	94V-0
Glow-Wire Capable	No
Guide to Mating Part	Yes
Keying to Mating Part	None
Lock to Mating Part	None
Material - Metal	High Conductivity Copper
Material - Plating Mating	Gold
Material - Plating Termination	Tin
Material - Resin	Liquid Crystal Polymer
Net Weight	14.690/g
Number of Rows	1, 5
Orientation	Right Angle
Packaging Type	Tray
PCB Locator	Yes
PCB Retention	Yes
PCB Thickness - Recommended	1.58mm
PC Tail Length	2.50mm, 3.30mm
Pitch - Mating Interface	2.00mm
Plating min - Mating	0.762µm
Plating min - Termination	2.540µm
Polarized to Mating Part	Yes
Polarized to PCB	Yes
(p)ower-(s)ignal Configuration	1p - 15s - 1p
Temperature Range - Operating	-40° to +105°C
Termination Interface Style	Through Hole - Compliant Pin

Mates With / Use With

Mates with Part(s)

Description	Part Number
EXTreme Guardian Right-Angle Plug Assembly with Guide Pins, 1	<u>2141130011</u>

Power Circuit, 15 Signal Circuits, 1 Power Circuit	
---	--

Application Tooling

This document was generated on Dec 25, 2025

Looking for pricing, stock, or lifecycle information?

Click below to explore more details on WIN SOURCE:

 [View 214115-0011 on WIN SOURCE](#)

 [Molex, LLC Information](#)

Optimize Your Supply Chain with WIN SOURCE Solutions

-  Global Sourcing Solution
-  Obsolete Management
-  Cost Control Management
-  Shortage Management
-  Alternative Solution
-  Excess Inventory Management