

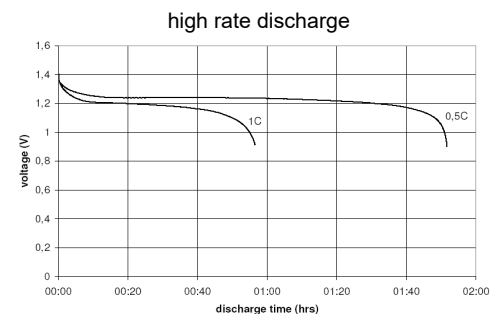
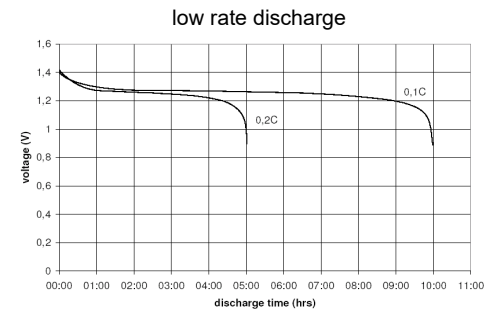
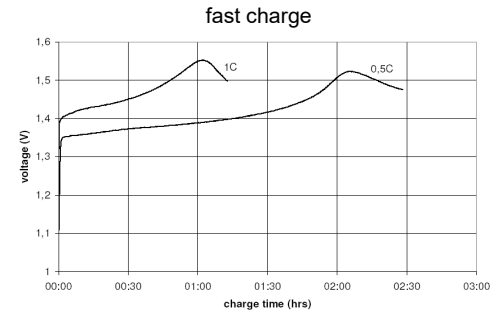
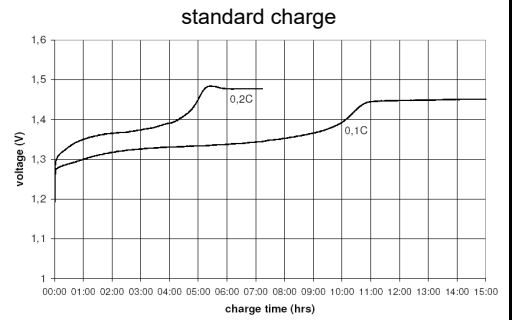


**THE DATASHEET OF  
5030642-XX**



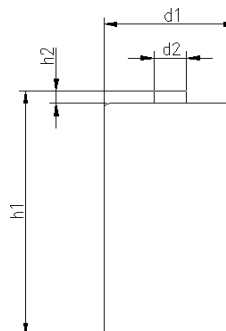
		<b>Conditions</b>	
<b>cell type:</b>		NiMH	
<b>cell size:</b>		D	
<b>nominal voltage:</b>	1.2	V	
<b>max. charge voltage:</b>	1.5	V	
		at standard charge (0.1C / 20°C)	
<b>capacity</b>			
nominal:	10000	mAh	discharge at 0.2C
minimum:	9300	mAh	discharge at 0.2C
	8500	mAh	discharge at 1C
		1.0V end discharge voltage	
		ta: 20°C	
<b>max. continuous discharge current:</b>	10	A	ta: 0...45°C
<b>charge</b>			
standard charge:	1000	mA	14....16hrs
quick charge:	2750	mA	4hrs
fast charge:	5000	mA	2.3hrs
recommended charge termination control parameters:	0...5	mV	- ΔV (-deltaV)
	0.8...1	°C	temperature rise per minute
	45...50	°C	TCO (temperature cut off)
trickle charge current:	50...250	mA	(recommended)
continuous overcharge: (less than 48 hours)	≤ 750	mA	no conspicuous deformation no leakage
<b>internal resistance:</b> (impedance)	≤ 12	mΩ	at 1KHz battery fully charged
<b>life expectancy:</b>	≥ 500	cycles	acc. IEC standard
<b>self discharge</b>			
charge retention:	≥ 80	%	after 12 months storage at 20°C
<b>initial capacity:</b>	≥ 6000	mAh	within 30 days after delivery discharge at 0.2C
<b>ambient temperature range:</b>	0...45	°C	standard charge
	10...40	°C	fast charge
	- 20...65	°C	discharge
	- 20...50	°C	storage (≤3months)
	- 20...40	°C	storage (≤6months)
	- 20...30	°C	storage (≤24months)
<b>QCT1:</b>	20/9000/15		
<b>QCT2:</b>	30/8500/15		

### Diagrams



### mechanical specifications

cell dimensions			
diameter d1:		32.8 - 1.0	mm
diameter d2:	max.	9.5	mm
height h1:		61.5 - 1.5	mm
height h2:	min.	1.5	mm
weight:		157 ± 5	g



	<b>ANSMANN Specifications for model:</b>	<b>NiMH Battery</b>
		<b>D - 10000mAh low self discharge</b>
	data sheet no. / part no.	
	s.n.	702069
author / date	TG / 26.03.2019	

## Looking for pricing, stock, or lifecycle information?

Click below to explore more details on WIN SOURCE:

- [View 5030642-XX on WIN SOURCE](#)
- [ANSMANN \(Huizhou\) Trading CO., LTD Information](#)

## Optimize Your Supply Chain with WIN SOURCE Solutions

- ✓ Global Sourcing Solution
- ✓ Obsolete Management
- ✓ Cost Control Management
- ✓ Shortage Management
- ✓ Alternative Solution
- ✓ Excess Inventory Management